

Incremental Heating		36Ar(a)	37Ar(ca)	38Ar(cl)	39Ar(k)	40Ar(r)	Age ± 2σ (Ma)	40Ar(r) (%)	39Ar(k) (%)	K/Ca ± 2σ
07C1694	0.00 W	0.000193	0.000061	0.000006	0.001002	0.006752	19.16 ± 14.67	10.61	0.03	7.1 ± 18.2
07C1695	0.01 W	0.000182	0.000090	0.000006	0.002340	0.001142	1.39 ± 5.98	2.08	0.07	11.2 ± 19.8
07C1696	0.09 W	0.000123	0.000226	0.000006	0.006877	0.006957	2.89 ± 1.75	16.10	0.20	13.1 ± 8.4
07C1698	0.12 W	0.000123	0.000692	0.000005	0.018447	0.014033	2.17 ± 0.74	27.83	0.54	11.5 ± 2.0
07C1699	0.18 W	0.000077	0.001110	0.000014	0.029555	0.022625	2.19 ± 0.48	49.66	0.86	11.4 ± 1.6
07C1701	0.19 W ✓	0.000115	0.005059	0.000000	0.140148	0.095014	1.94 ± 0.14	73.53	4.08	11.9 ± 0.7
07C1702	0.27 W ✓	0.000086	0.006734	0.000012	0.168035	0.109332	1.86 ± 0.11	80.90	4.89	10.7 ± 0.5
07C1703	0.35 W ✓	0.000062	0.006710	0.000000	0.156932	0.100296	1.83 ± 0.13	84.33	4.57	10.1 ± 0.5
07C1705	0.44 W ✓	0.000048	0.007240	0.000000	0.163721	0.108215	1.89 ± 0.11	88.21	4.77	9.7 ± 0.5
07C1706	0.56 W ✓	0.000058	0.011022	0.000000	0.239195	0.159048	1.90 ± 0.08	90.04	6.97	9.3 ± 0.4
07C1707	0.65 W ✓	0.000048	0.010385	0.000000	0.215607	0.143421	1.90 ± 0.09	90.71	6.28	8.9 ± 0.4
07C1709	0.80 W ✓	0.000058	0.011700	0.000000	0.238180	0.155031	1.86 ± 0.08	89.87	6.94	8.8 ± 0.4
07C1710	0.88 W ✓	0.000063	0.014123	0.000000	0.277490	0.181588	1.87 ± 0.07	90.51	8.08	8.4 ± 0.4
07C1711	0.97 W ✓	0.000043	0.011879	0.000000	0.222410	0.147254	1.89 ± 0.09	91.86	6.48	8.1 ± 0.4
07C1713	1.15 W ✓	0.000051	0.013068	0.000012	0.239918	0.157852	1.88 ± 0.08	91.08	6.99	7.9 ± 0.3
07C1714	1.30 W ✓	0.000035	0.011629	0.000000	0.206640	0.137486	1.90 ± 0.10	92.87	6.02	7.6 ± 0.4
07C1715	1.44 W ✓	0.000046	0.011869	0.000000	0.206614	0.131591	1.82 ± 0.09	90.49	6.02	7.5 ± 0.3
07C1717	1.80 W ✓	0.000052	0.013778	0.000000	0.229617	0.148033	1.84 ± 0.08	90.40	6.69	7.2 ± 0.3
07C1718	2.18 W ✓	0.000066	0.015913	0.000000	0.262642	0.167679	1.82 ± 0.08	89.36	7.65	7.1 ± 0.3
07C1719	2.51 W ✓	0.000041	0.010656	0.000000	0.164947	0.105423	1.83 ± 0.12	89.40	4.80	6.7 ± 0.3
07C1721	3.12 W ✓	0.000040	0.009379	0.000000	0.143214	0.093484	1.86 ± 0.14	88.54	4.17	6.6 ± 0.3
07C1722	3.98 W ✓	0.000014	0.004865	0.000000	0.068988	0.048213	2.00 ± 0.31	91.81	2.01	6.1 ± 0.4
07C1723	4.66 W	0.000009	0.002235	0.000004	0.031047	0.028200	2.59 ± 0.67	110.75	0.90	6.0 ± 0.5
Σ		0.001615	0.180425	0.000064	3.433568	2.268669				

Information on Analysis	Results	40(r)/39(k) ± 2σ	Age ± 2σ (Ma)	MSWD	39Ar(k) (%),n	K/Ca ± 2σ
Sample = TAM-1 4D4-06 Material = Groundmass 210-300μm Location = Tama'i, Samoa Analyst = Jamie Russell Project = SAMOA Mass Discrimination Law = LIN Irradiation = OSU4D06 J = 0.00158000 ± 0.00000363 FCT-3 = 28.030 ± 0.003 Ma	<b>Age Plateau</b>	0.6536 ± 0.0083 ± 1.28%	1.87 ± 0.03 ± 1.36%	0.45 97%	97.40 17	7.9 ± 0.6
		Minimal External Error ± 0.04 Analytical Error ± 0.02		1.35 1.0000	2σ Confidence Limit Error Magnification	
	<b>Total Fusion Age</b>	0.6607 ± 0.0092 ± 1.39%	1.89 ± 0.03 ± 1.47%		23	8.2 ± 0.3
		Minimal External Error ± 0.04 Analytical Error ± 0.03				

Normal Isochron		39(k)/36(a) ± 2σ	40(a+r)/36(a) ± 2σ	r.i.
07C1694	0.00 W	5.2 ± 0.5	330.6 ± 30.1	0.8587
07C1695	0.01 W	12.9 ± 1.2	301.8 ± 27.5	0.9576
07C1696	0.09 W	56.1 ± 6.5	352.2 ± 40.8	0.9925
07C1698	0.12 W	149.9 ± 19.6	409.5 ± 53.4	0.9958
07C1699	0.18 W	381.6 ± 83.1	587.6 ± 128.1	0.9991
07C1701	0.19 W ✓	1219.2 ± 240.5	1122.1 ± 221.3	0.9996
07C1702	0.27 W ✓	1944.5 ± 505.4	1560.7 ± 405.7	0.9996
07C1703	0.35 W ✓	2524.2 ± 947.3	1908.7 ± 716.3	0.9999
07C1705	0.44 W ✓	3407.7 ± 1551.7	2547.9 ± 1160.2	0.9999
07C1706	0.56 W ✓	4109.7 ± 1630.7	3028.2 ± 1201.6	0.9999
07C1707	0.65 W ✓	4445.6 ± 2195.8	3252.7 ± 1606.5	1.0000
07C1709	0.80 W ✓	4122.1 ± 1678.6	2978.6 ± 1212.7	0.9998
07C1710	0.88 W ✓	4414.8 ± 1621.9	3184.6 ± 1169.7	0.9998
07C1711	0.97 W ✓	5183.5 ± 2937.9	3727.4 ± 2112.6	1.0000
07C1713	1.15 W ✓	4704.5 ± 2191.7	3390.8 ± 1579.7	0.9999
07C1714	1.30 W ✓	5978.0 ± 4289.9	4272.9 ± 3066.0	0.9999
07C1715	1.44 W ✓	4526.7 ± 2252.5	3178.5 ± 1581.6	0.9999
07C1717	1.80 W ✓	4421.0 ± 1872.1	3145.7 ± 1332.0	0.9999
07C1718	2.18 W ✓	3974.6 ± 1526.7	2833.0 ± 1088.2	0.9999
07C1719	2.51 W ✓	3985.1 ± 2170.9	2842.5 ± 1548.4	0.9999
07C1721	3.12 W ✓	3565.6 ± 2055.5	2623.0 ± 1512.1	0.9999
07C1722	3.98 W ✓	4867.1 ± 8830.6	3696.9 ± 6707.4	1.0000
07C1723	4.66 W	3289.1 ± 8589.7	2692.0 ± 7030.3	1.0000

Results	40(a)/36(a) ± 2σ	40(r)/39(k) ± 2σ	Age ± 2σ (Ma)	MSWD
Normal Isochron No Convergence	330.8136 ± 79.2720 ± 23.96%	0.6404 ± 0.0237 ± 3.69%	1.83 ± 0.07 ± 3.72%	0.35 99%
			Minimal External Error ± 0.08 Analytical Error ± 0.07	
Statistics	2σ Confidence Limit Error Magnification Number of Data Points	1.73 1.0000 17	Convergence Number of Iterations Calculated Line	0.0000985093 100 Weighted York-2

Inverse Isochron		39(k)/40(a+r) ± 2σ	36(a)/40(a+r) ± 2σ	r.i.
07C1694	0.00 W	0.015738 ± 0.000851	0.003025 ± 0.000276	0.0088
07C1695	0.01 W	0.042671 ± 0.001164	0.003314 ± 0.000302	0.0183
07C1696	0.09 W	0.159197 ± 0.002261	0.002839 ± 0.000329	0.0423
07C1698	0.12 W	0.366038 ± 0.004366	0.002442 ± 0.000318	0.0430
07C1699	0.18 W	0.649399 ± 0.005871	0.001702 ± 0.000371	0.0308
07C1701	0.19 W ✓	1.086569 ± 0.006387	0.000891 ± 0.000176	0.0076
07C1702	0.27 W ✓	1.245919 ± 0.008989	0.000641 ± 0.000167	0.0122
07C1703	0.35 W ✓	1.322444 ± 0.006742	0.000524 ± 0.000197	0.0021
07C1705	0.44 W ✓	1.337462 ± 0.008276	0.000392 ± 0.000179	0.0041
07C1706	0.56 W ✓	1.357158 ± 0.008413	0.000330 ± 0.000131	0.0073
07C1707	0.65 W ✓	1.366744 ± 0.006284	0.000307 ± 0.000152	0.0026
07C1709	0.80 W ✓	1.383919 ± 0.011558	0.000336 ± 0.000137	0.0009
07C1710	0.88 W ✓	1.386331 ± 0.010994	0.000314 ± 0.000115	0.0032
07C1711	0.97 W ✓	1.390644 ± 0.007424	0.000268 ± 0.000152	0.0040
07C1713	1.15 W ✓	1.387441 ± 0.007228	0.000295 ± 0.000137	0.0052
07C1714	1.30 W ✓	1.399046 ± 0.016337	0.000234 ± 0.000168	0.0020
07C1715	1.44 W ✓	1.424156 ± 0.008147	0.000315 ± 0.000157	0.0031
07C1717	1.80 W ✓	1.405413 ± 0.006494	0.000318 ± 0.000135	0.0029
07C1718	2.18 W ✓	1.402961 ± 0.008060	0.000353 ± 0.000136	0.0075
07C1719	2.51 W ✓	1.401969 ± 0.011369	0.000352 ± 0.000192	0.0057
07C1721	3.12 W ✓	1.359370 ± 0.011417	0.000381 ± 0.000220	0.0080
07C1722	3.98 W ✓	1.316534 ± 0.006855	0.000270 ± 0.000491	0.0013
07C1723	4.66 W	1.221814 ± 0.009118	0.000371 ± 0.000970	0.0011

Results	40(a)/36(a) ± 2σ	40(r)/39(k) ± 2σ	Age ± 2σ (Ma)	MSWD
Inverse Isochron	338.7952 ± 82.8668 ± 24.46%	0.6421 ± 0.0230 ± 3.57%	1.83 ± 0.07 ± 3.60%	0.39 98%
		Minimal External Error ± 0.07 Analytical Error ± 0.07		
Statistics	2σ Confidence Limit Error Magnification Number of Data Points Spreading Factor	1.73 1.0000 17 21.7%	Convergence Number of Iterations Calculated Line	0.0000044148 3 Weighted York-2

Relative Abundances		36Ar	%1σ	37Ar	%1σ	38Ar	%1σ	39Ar	%1σ	40Ar	%1σ	Age ± 2σ (Ma)	40Ar(r) (%)	39Ar(k) (%)	K/Ca ± 2σ
07C1694	0.00 W	0.0001926	4.541	0.0000607	128.144	0.0000544	11.590	0.0010017	2.683	0.0636492	0.330	19.16 ± 14.67	10.61	0.03	7.1 ± 18.2
07C1695	0.01 W	0.0001818	4.547	0.0000897	88.086	0.0000678	13.620	0.0023403	1.322	0.0548488	0.338	1.39 ± 5.98	2.08	0.07	11.2 ± 19.8
07C1696	0.09 W	0.0001227	5.780	0.0002261	32.173	0.0001126	4.745	0.0068773	0.575	0.0432100	0.417	2.89 ± 1.75	16.10	0.20	13.1 ± 8.4
07C1698	0.12 W	0.0001232	6.497	0.0006921	8.689	0.0002510	2.857	0.0184474	0.434	0.0504267	0.408	2.17 ± 0.74	27.83	0.54	11.5 ± 2.0
07C1699	0.18 W	0.0000778	10.849	0.0011103	6.567	0.0003862	1.979	0.0295560	0.229	0.0455604	0.388	2.19 ± 0.48	49.66	0.86	11.4 ± 1.6
07C1701	0.19 W ✓	0.0001163	9.744	0.0050585	2.115	0.0017167	0.696	0.1401515	0.254	0.1292133	0.141	1.94 ± 0.14	73.53	4.08	11.9 ± 0.7
07C1702	0.27 W ✓	0.0000882	12.727	0.0067343	1.516	0.0020628	0.899	0.1680397	0.270	0.1351455	0.233	1.86 ± 0.11	80.90	4.89	10.7 ± 0.5
07C1703	0.35 W ✓	0.0000640	18.235	0.0067100	1.498	0.0018858	1.040	0.1569369	0.234	0.1189272	0.085	1.83 ± 0.13	84.33	4.57	10.1 ± 0.5
07C1705	0.44 W ✓	0.0000500	21.880	0.0072403	1.329	0.0019780	0.555	0.1637264	0.258	0.1226820	0.161	1.89 ± 0.11	88.21	4.77	9.7 ± 0.5
07C1706	0.56 W ✓	0.0000612	18.877	0.0110219	1.209	0.0028951	0.708	0.2392027	0.226	0.1766416	0.204	1.90 ± 0.08	90.04	6.97	9.3 ± 0.4
07C1707	0.65 W ✓	0.0000513	23.350	0.0103849	1.033	0.0026031	0.824	0.2156147	0.195	0.1581083	0.107	1.90 ± 0.09	90.71	6.28	8.9 ± 0.4
07C1709	0.80 W ✓	0.0000609	19.305	0.0117001	1.333	0.0028919	0.714	0.2381884	0.409	0.1724985	0.065	1.86 ± 0.08	89.87	6.94	8.8 ± 0.4
07C1710	0.88 W ✓	0.0000667	17.318	0.0141230	1.014	0.0033256	0.546	0.2774997	0.366	0.2006191	0.141	1.87 ± 0.07	90.51	8.08	8.4 ± 0.4
07C1711	0.97 W ✓	0.0000461	26.374	0.0118795	1.007	0.0026950	0.802	0.2224181	0.202	0.1602998	0.165	1.89 ± 0.09	91.86	6.48	8.1 ± 0.4
07C1713	1.15 W ✓	0.0000545	21.790	0.0130682	0.916	0.0029274	0.574	0.2399276	0.191	0.1733174	0.168	1.88 ± 0.08	91.08	6.99	7.9 ± 0.3
07C1714	1.30 W ✓	0.0000377	32.899	0.0116292	1.117	0.0024828	0.939	0.2066481	0.547	0.1480416	0.197	1.90 ± 0.10	92.87	6.02	7.6 ± 0.4
07C1715	1.44 W ✓	0.0000488	23.252	0.0118687	1.143	0.0024654	0.958	0.2066228	0.244	0.1454195	0.136	1.82 ± 0.09	90.49	6.02	7.5 ± 0.3
07C1717	1.80 W ✓	0.0000556	19.762	0.0137782	0.951	0.0027835	0.839	0.2296272	0.198	0.1637596	0.104	1.84 ± 0.08	90.40	6.69	7.2 ± 0.3
07C1718	2.18 W ✓	0.0000704	18.036	0.0159131	1.008	0.0031313	1.161	0.2626534	0.202	0.1876389	0.195	1.82 ± 0.08	89.36	7.65	7.1 ± 0.3
07C1719	2.51 W ✓	0.0000443	25.472	0.0106562	1.441	0.0019640	0.854	0.1649549	0.318	0.1179262	0.244	1.83 ± 0.12	89.40	4.80	6.7 ± 0.3
07C1721	3.12 W ✓	0.0000427	27.118	0.0093792	1.717	0.0017202	0.732	0.1432208	0.283	0.1055897	0.305	1.86 ± 0.14	88.54	4.17	6.6 ± 0.3
07C1722	3.98 W ✓	0.0000155	83.048	0.0048655	2.145	0.0008374	2.209	0.0689916	0.192	0.0525152	0.167	2.00 ± 0.31	91.81	2.01	6.1 ± 0.4
07C1723	4.66 W	0.0000088	139.476	0.0022354	3.959	0.0003781	2.540	0.0310484	0.296	0.0254617	0.221	2.59 ± 0.67	110.75	0.90	6.0 ± 0.5
Σ		0.0016633	3.193	0.1804250	0.312	0.0416161	0.208	3.4336957	0.071	2.7515001	0.041				

**Information on Analysis and Constants Used in Calculations**

Sample = TAM-1 4D4-06  
Material = Groundmass 210-300μm  
Location = Tama'i, Samoa  
Analyst = Jamie Russell  
Project = SAMOA  
Mass Discrimination Law = LIN  
Irradiation = OSU4D06  
J = 0.00158000 ± 0.00000363  
FCT-3 = 28.030 ± 0.003 Ma  
IGSN = KOP000046  
Preferred Age = Plateau Age  
Classification = Eruption Age  
Experiment Type = Incremental Heating  
Extraction Method = Bulk Laser Heating  
Heating = 600 sec  
Isolation = 15.00 min  
Instrument = MAP215-50  
Lithology = Trachybasalt  
Lat-Lon = 13°45.3'S - 170°32.1'E

Age Equations = Conventional  
Negative Intensities = Allowed  
Decay Constant 40K = 5.530 ± 0.048 E-10 1/a  
Decay Constant 39Ar = 2.940 ± 0.016 E-07 1/h  
Decay Constant 37Ar = 8.230 ± 0.012 E-04 1/h  
Decay Constant 36Cl = 2.236 ± 0.045 E-06 1/a  
Production Ratio 36/38 in Cl = 316.0 ± 15.8

Results	40(r)/39(k) ± 2σ	Age ± 2σ (Ma)	MSWD	39Ar(k) (% ,n)	K/Ca ± 2σ
<b>Age Plateau</b>	0.6536 ± 0.0083 ± 1.28%	1.87 ± 0.03 ± 1.36%	0.45 97%	97.40 17	7.9 ± 0.6
	Minimal External Error ± 0.04 Analytical Error ± 0.02		1.35 1.0000	2σ Confidence Limit Error Magnification	
<b>Total Fusion Age</b>	0.6607 ± 0.0092 ± 1.39%	1.89 ± 0.03 ± 1.47%		23	8.2 ± 0.3
	Minimal External Error ± 0.04 Analytical Error ± 0.03				
<b>Normal Isochron</b> <b>No Convergence</b>	0.6404 ± 0.0237 ± 3.69%	1.83 ± 0.07 ± 3.72%	0.35 99%	97.40 17	
	Minimal External Error ± 0.08 Analytical Error ± 0.07		1.73 1.0000	2σ Confidence Limit Error Magnification	
<b>Inverse Isochron</b>	0.6421 ± 0.0230 ± 3.57%	1.83 ± 0.07 ± 3.60%	0.39 98%	97.40 17	
	Minimal External Error ± 0.07 Analytical Error ± 0.07		1.73 1.0000	2σ Confidence Limit Error Magnification	

Institute of Geophysics and Planetary Physics  
Scripps Institution of Oceanography, La Jolla, USA

Degassing Patterns		36Ar(a)	%1σ	36Ar(c)	%1σ	36Ar(ca)	%1σ	36Ar(cl)	%1σ	37Ar(ca)	%1σ	38Ar(a)	%1σ	38Ar(c)	%1σ	38Ar(k)	%1σ	38Ar(ca)	%1σ	38Ar(cl)	%1σ	39Ar(k)	%1σ	39Ar(ca)	%1σ	40Ar(r)	%1σ	40Ar(a)	%1σ	40Ar(c)	%1σ	40Ar(k)	%1σ
07C1694	0.00 W	0.000193	4.54	0.000000	0.00	0.000000	128.14	0.000000	103.24	0.000061	128.14	0.000036	4.54	0.000000	0.00	0.000012	2.69	0.000000	130.00	0.000006	103.39	0.001002	2.68	0.000000	128.16	0.006752	38.40	0.056896	4.54	0.000000	0.00	0.000002	25.04
07C1695	0.01 W	0.000182	4.55	0.000000	0.00	0.000000	88.09	0.000000	170.26	0.000090	88.09	0.000034	4.55	0.000000	0.00	0.000028	1.33	0.000000	90.77	0.000006	170.34	0.002340	1.32	0.000000	88.10	0.001142	214.48	0.053703	4.55	0.000000	0.00	0.000004	24.94
07C1696	0.09 W	0.000123	5.78	0.000000	0.00	0.000000	32.18	0.000000	86.65	0.000226	32.17	0.000023	5.78	0.000000	0.00	0.000083	0.58	0.000000	38.92	0.000006	86.82	0.006877	0.57	0.000000	32.23	0.006957	30.24	0.036241	5.78	0.000000	0.00	0.000011	24.91
07C1698	0.12 W	0.000123	6.51	0.000000	0.00	0.000000	8.70	0.000000	160.30	0.000692	8.69	0.000023	6.51	0.000000	0.00	0.000223	0.45	0.000000	23.56	0.000005	160.39	0.018447	0.43	0.000000	8.88	0.014033	16.92	0.036363	6.51	0.000000	0.00	0.000030	24.90
07C1699	0.18 W	0.000077	10.89	0.000000	0.00	0.000000	6.58	0.000000	57.45	0.001110	6.57	0.000014	10.89	0.000000	0.00	0.000358	0.25	0.000000	22.86	0.000014	57.70	0.029555	0.23	0.000001	6.82	0.022625	11.04	0.022887	10.89	0.000000	0.00	0.000049	24.90
07C1701	0.19 W ✓	0.000115	9.86	0.000000	0.00	0.000001	2.15	0.000000	0.00	0.005059	2.11	0.000021	9.86	0.000000	0.00	0.001697	0.27	0.000000	22.00	0.000000	0.00	0.140148	0.25	0.000004	2.80	0.095014	3.53	0.033968	9.86	0.000000	0.00	0.000231	24.90
07C1702	0.27 W ✓	0.000086	12.99	0.000000	0.00	0.000002	1.56	0.000000	170.16	0.006734	1.52	0.000016	12.99	0.000000	0.00	0.002035	0.29	0.000000	21.95	0.000012	170.25	0.168035	0.27	0.000005	2.38	0.109332	3.05	0.025536	12.99	0.000000	0.00	0.000277	24.90
07C1703	0.35 W ✓	0.000062	18.76	0.000000	0.00	0.000002	1.54	0.000000	0.00	0.006710	1.50	0.000012	18.76	0.000000	0.00	0.001900	0.25	0.000000	21.95	0.000000	0.00	0.156932	0.23	0.000005	2.36	0.100296	3.44	0.018372	18.76	0.000000	0.00	0.000259	24.90
07C1705	0.44 W ✓	0.000048	22.77	0.000000	0.00	0.000002	1.38	0.000000	0.00	0.007240	1.33	0.000009	22.77	0.000000	0.00	0.001983	0.28	0.000000	21.94	0.000000	0.00	0.163721	0.26	0.000005	2.26	0.108215	2.99	0.014197	22.77	0.000000	0.00	0.000270	24.90
07C1706	0.56 W ✓	0.000058	19.84	0.000000	0.00	0.000003	1.26	0.000000	0.00	0.011022	1.21	0.000011	19.84	0.000000	0.00	0.002897	0.25	0.000000	21.93	0.000000	0.00	0.239195	0.23	0.000008	2.19	0.159048	2.16	0.017199	19.84	0.000000	0.00	0.000395	24.90
07C1707	0.65 W ✓	0.000048	24.70	0.000000	0.00	0.000003	1.10	0.000000	0.00	0.010385	1.03	0.000009	24.70	0.000000	0.00	0.002611	0.22	0.000000	21.92	0.000000	0.00	0.215607	0.20	0.000007	2.10	0.143421	2.47	0.014332	24.70	0.000000	0.00	0.000356	24.90
07C1709	0.80 W ✓	0.000058	20.36	0.000000	0.00	0.000003	1.38	0.000000	0.00	0.011700	1.33	0.000011	20.36	0.000000	0.00	0.002884	0.42	0.000000	21.94	0.000000	0.00	0.238180	0.41	0.000008	2.26	0.155031	2.24	0.017074	20.36	0.000000	0.00	0.000393	24.90
07C1710	0.88 W ✓	0.000063	18.36	0.000000	0.00	0.000004	1.08	0.000000	0.00	0.014123	1.01	0.000012	18.36	0.000000	0.00	0.003360	0.38	0.000000	21.92	0.000000	0.00	0.277490	0.37	0.000010	2.09	0.181588	1.89	0.018573	18.36	0.000000	0.00	0.000458	24.90
07C1711	0.97 W ✓	0.000043	28.34	0.000000	0.00	0.000003	1.07	0.000000	0.00	0.011879	1.01	0.000008	28.34	0.000000	0.00	0.002693	0.23	0.000000	21.92	0.000000	0.00	0.222410	0.20	0.000008	2.09	0.147254	2.45	0.012679	28.34	0.000000	0.00	0.000367	24.90
07C1713	1.15 W ✓	0.000051	23.29	0.000000	0.00	0.000004	0.99	0.000000	150.45	0.013068	0.92	0.000010	23.29	0.000000	0.00	0.002905	0.22	0.000000	21.92	0.000012	150.55	0.239918	0.19	0.000009	2.05	0.157852	2.23	0.015070	23.29	0.000000	0.00	0.000396	24.90
07C1714	1.30 W ✓	0.000035	35.88	0.000000	0.00	0.000003	1.18	0.000000	0.00	0.011629	1.12	0.000006	35.88	0.000000	0.00	0.002502	0.56	0.000000	21.93	0.000000	0.00	0.206640	0.55	0.000008	2.14	0.137486	2.67	0.010214	35.88	0.000000	0.00	0.000341	24.91
07C1715	1.44 W ✓	0.000046	24.88	0.000000	0.00	0.000003	1.20	0.000000	0.00	0.011869	1.14	0.000009	24.88	0.000000	0.00	0.002502	0.26	0.000000	21.93	0.000000	0.00	0.206614	0.24	0.000008	2.16	0.131591	2.56	0.013488	24.88	0.000000	0.00	0.000341	24.90
07C1717	1.80 W ✓	0.000052	21.17	0.000000	0.00	0.000004	1.02	0.000000	0.00	0.013778	0.95	0.000010	21.17	0.000000	0.00	0.002781	0.22	0.000000	21.92	0.000000	0.00	0.229617	0.20	0.000010	2.06	0.148033	2.20	0.015348	21.17	0.000000	0.00	0.000379	24.90
07C1718	2.18 W ✓	0.000066	19.20	0.000000	0.00	0.000004	1.07	0.000000	0.00	0.015913	1.01	0.000012	19.20	0.000000	0.00	0.003181	0.23	0.000001	21.92	0.000000	0.00	0.262642	0.20	0.000011	2.09	0.167679	2.25	0.019527	19.20	0.000000	0.00	0.000433	24.90
07C1719	2.51 W ✓	0.000041	27.24	0.000000	0.00	0.000003	1.49	0.000000	0.00	0.010656	1.44	0.000008	27.24	0.000000	0.00	0.001998	0.33	0.000000	21.95	0.000000	0.00	0.164947	0.32	0.000008	2.33	0.105423	3.17	0.012231	27.24	0.000000	0.00	0.000272	24.90
07C1721	3.12 W ✓	0.000040	28.82	0.000000	0.00	0.000003	1.76	0.000000	0.00	0.009379	1.72	0.000008	28.82	0.000000	0.00	0.001734	0.30	0.000000	21.97	0.000000	0.00	0.143214	0.28	0.000007	2.51	0.093484	3.68	0.011869	28.82	0.000000	0.00	0.000236	24.90
07C1722	3.98 W ✓	0.000014	90.72	0.000000	0.00	0.000001	2.18	0.000000	0.00	0.004865	2.15	0.000003	90.72	0.000000	0.00	0.000835	0.22	0.000000	22.00	0.000000	0.00	0.068988	0.19	0.000003	2.82	0.048213	7.88	0.004189	90.72	0.000000	0.00	0.000114	24.90
07C1723	4.66 W	0.000009	130.58	0.000000	0.00	0.000001	3.98	0.000000	259.90	0.002235	3.96	0.000002	130.58	0.000000	0.00	0.000376	0.31	0.000000	22.26	0.000004	259.96	0.031047	0.30	0.000002	4.36	0.028200	12.92	0.002789	130.58	0.000000	0.00	0.000051	24.90
	Σ	0.001615	3.29	0.000000	0.00	0.000049	0.33	0.000000	51.66	0.180425	0.31	0.000302	3.29	0.000000	0.00	0.041581	0.08	0.000006	5.43	0.000064	51.63	3.433568	0.07	0.000128	0.55	2.268669	0.69	0.477166	3.29	0.000000	0.00	0.005665	6.09
	Σ							0.001663	3.19	0.180425	0.31									0.041952	0.11			3.433696	0.07							2.751500	0.81

Additional Parameters		40(r)/39(k)	1σ	40(r+a)	1σ	40Ar/39Ar	1σ	37Ar/39Ar	1σ	36Ar/39Ar	1σ	Time (days)	37Ar (decay)	39Ar (decay)	40Ar (moles)
07C1694	0.00 W	6.740073	2.59458	0.063648	0.00021	63.538590	1.71765	0.060594	0.07766	0.192225	0.01014	120.116	10.75099886	1.00084878	6.441E-21
07C1695	0.01 W	0.487909	1.04648	0.054845	0.00019	23.436309	0.31969	0.038316	0.03375	0.077665	0.00368	120.135	10.75498123	1.00084891	5.551E-21
07C1696	0.09 W	1.011640	0.30596	0.043199	0.00018	6.283025	0.04461	0.032871	0.01058	0.017842	0.00104	120.153	10.75881750	1.00084904	4.373E-21
07C1698	0.12 W	0.760743	0.12879	0.050396	0.00021	2.733537	0.01629	0.037519	0.00326	0.006681	0.00044	120.189	10.76649414	1.00084930	5.103E-21
07C1699	0.18 W	0.765505	0.08457	0.045512	0.00018	1.541494	0.00695	0.037565	0.00247	0.002631	0.00029	120.207	10.77033452	1.00084942	4.611E-21
07C1701	0.19 W ✓	0.677957	0.02400	0.128982	0.00019	0.921955	0.00268	0.036093	0.00077	0.000830	0.00008	120.606	10.85561691	1.00085224	1.308E-20
07C1702	0.27 W ✓	0.650651	0.01992	0.134868	0.00032	0.804248	0.00287	0.040076	0.00062	0.000525	0.00007	120.625	10.85963804	1.00085238	1.368E-20
07C1703	0.35 W ✓	0.639107	0.02203	0.118668	0.00012	0.757803	0.00189	0.042756	0.00065	0.000408	0.00007	120.643	10.86351164	1.00085250	1.204E-20
07C1705	0.44 W ✓	0.660969	0.01986	0.122412	0.00021	0.749311	0.00228	0.044222	0.00060	0.000305	0.00007	120.680	10.87141210	1.00085276	1.242E-20
07C1706	0.56 W ✓	0.664931	0.01443	0.176247	0.00037	0.738460	0.00225	0.046078	0.00057	0.000256	0.00005	120.698	10.87528990	1.00085289	1.788E-20
07C1707	0.65 W ✓	0.665196	0.01649	0.157753	0.00019	0.733291	0.00163	0.048164	0.00051	0.000238	0.00006	120.716	10.87916908	1.00085302	1.600E-20
07C1709	0.80 W ✓	0.650899	0.01485	0.172106	0.00015	0.724211	0.00300	0.049121	0.00068	0.000256	0.00005	120.753	10.88708093	1.00085328	1.746E-20
07C1710	0.88 W ✓	0.654395	0.01257	0.200161	0.00030	0.722953	0.00284	0.050894	0.00055	0.000240	0.00004	120.772	10.89111371	1.00085341	2.030E-20
07C1711	0.97 W ✓	0.662084	0.01626	0.159933	0.00028	0.720714	0.00188	0.053411	0.00055	0.000207	0.00005	120.790	10.89499854	1.00085354	1.622E-20
07C1713	1.15 W ✓	0.657940	0.01474	0.172922	0.00031	0.722374	0.00183	0.054467	0.00051	0.000227	0.00005	120.830	10.90366968	1.00085382	1.754E-20
07C1714	1.30 W ✓	0.665342	0.01816	0.147701	0.00030	0.716394	0.00416	0.056276	0.00070	0.000182	0.00006	120.848	10.90755899	1.00085395	1.498E-20
07C1715	1.44 W ✓	0.636892	0.01635	0.145079	0.00022	0.703792	0.00197	0.057441	0.00067	0.000236	0.00005	120.866	10.91144968	1.00085408	1.472E-20
07C1717	1.80 W ✓	0.644694	0.01423	0.163381	0.00019	0.713154	0.00159	0.060003	0.00058	0.000242	0.00005	120.902	10.91923523	1.00085433	1.657E-20
07C1718	2.18 W ✓	0.638431	0.01441	0.187206	0.00038	0.714397	0.00201	0.060586	0.00062	0.000268	0.00005	120.921	10.92327992	1.00085446	1.899E-20
07C1719	2.51 W ✓	0.639132	0.02038	0.117654	0.00030	0.714900	0.00287	0.064601	0.00095	0.000268	0.00007	120.939	10.92717622	1.00085459	1.193E-20
07C1721	3.12 W ✓	0.652760	0.02407	0.105353	0.00033	0.737251	0.00306	0.065487	0.00114	0.000298	0.00008	120.976	10.93512298	1.00085485	1.069E-20
07C1722	3.98 W ✓	0.698856	0.05511	0.052401	0.00009	0.761182	0.00194	0.070523	0.00152	0.000224	0.00019	120.994	10.93902351	1.00085498	5.315E-21
07C1723	4.66 W	0.908297	0.11736	0.025410	0.00006	0.820063	0.00303	0.071998	0.00286	0.000285	0.00040	121.011	10.94277532	1.00085510	2.577E-21

Procedure Blanks		36Ar	1σ	37Ar	1σ	38Ar	1σ	39Ar	1σ	40Ar	1σ
07C1694	0.00 W	0.000014	0.000006	0.000016	0.000005	0.000004	0.000004	0.000074	0.000026	0.002936	0.000172
07C1695	0.01 W	0.000012	0.000006	0.000014	0.000005	0.000004	0.000004	0.000069	0.000026	0.002872	0.000172
07C1696	0.09 W	0.000010	0.000006	0.000011	0.000005	0.000004	0.000004	0.000061	0.000026	0.002792	0.000172
07C1698	0.12 W	0.000010	0.000006	0.000001	0.000005	0.000003	0.000004	0.000037	0.000026	0.002565	0.000172
07C1699	0.18 W	0.000010	0.000006	0.000001	0.000005	0.000002	0.000004	0.000019	0.000026	0.002411	0.000172
07C1701	0.19 W	0.000005	0.000011	0.000017	0.000007	0.000006	0.000005	0.000046	0.000011	0.002490	0.000049
07C1702	0.27 W	0.000005	0.000011	0.000016	0.000007	0.000004	0.000005	0.000062	0.000011	0.002660	0.000049
07C1703	0.35 W	0.000005	0.000011	0.000016	0.000007	0.000003	0.000005	0.000072	0.000011	0.002720	0.000049
07C1705	0.44 W	0.000008	0.000011	0.000015	0.000007	0.000002	0.000005	0.000080	0.000011	0.002639	0.000049
07C1706	0.56 W	0.000009	0.000011	0.000015	0.000007	0.000002	0.000005	0.000081	0.000011	0.002548	0.000049
07C1707	0.65 W	0.000010	0.000011	0.000015	0.000007	0.000002	0.000005	0.000080	0.000011	0.002448	0.000049
07C1709	0.80 W	0.000012	0.000011	0.000015	0.000007	0.000004	0.000005	0.000076	0.000011	0.002278	0.000049
07C1710	0.88 W	0.000012	0.000011	0.000016	0.000007	0.000005	0.000005	0.000074	0.000011	0.002230	0.000049
07C1711	0.97 W	0.000012	0.000011	0.000016	0.000007	0.000005	0.000005	0.000073	0.000011	0.002218	0.000049
07C1713	1.15 W	0.000010	0.000011	0.000018	0.000007	0.000007	0.000005	0.000072	0.000011	0.002310	0.000049
07C1714	1.30 W	0.000009	0.000011	0.000018	0.000007	0.000008	0.000005	0.000073	0.000011	0.002397	0.000049
07C1715	1.44 W	0.000007	0.000011	0.000018	0.000007	0.000008	0.000005	0.000075	0.000011	0.002502	0.000049
07C1717	1.80 W	0.000006	0.000011	0.000018	0.000007	0.000009	0.000005	0.000079	0.000011	0.002711	0.000049
07C1718	2.18 W	0.000006	0.000011	0.000018	0.000007	0.000009	0.000005	0.000080	0.000011	0.002783	0.000049
07C1719	2.51 W	0.000007	0.000011	0.000017	0.000007	0.000009	0.000005	0.000080	0.000011	0.002800	0.000049
07C1721	3.12 W	0.000015	0.000011	0.000012	0.000007	0.000008	0.000005	0.000073	0.000011	0.002566	0.000049
07C1722	3.98 W	0.000023	0.000011	0.000008	0.000007	0.000008	0.000005	0.000065	0.000011	0.002257	0.000049
07C1723	4.66 W	0.000033	0.000011	0.000003	0.000007	0.000008	0.000005	0.000052	0.000011	0.001796	0.000049

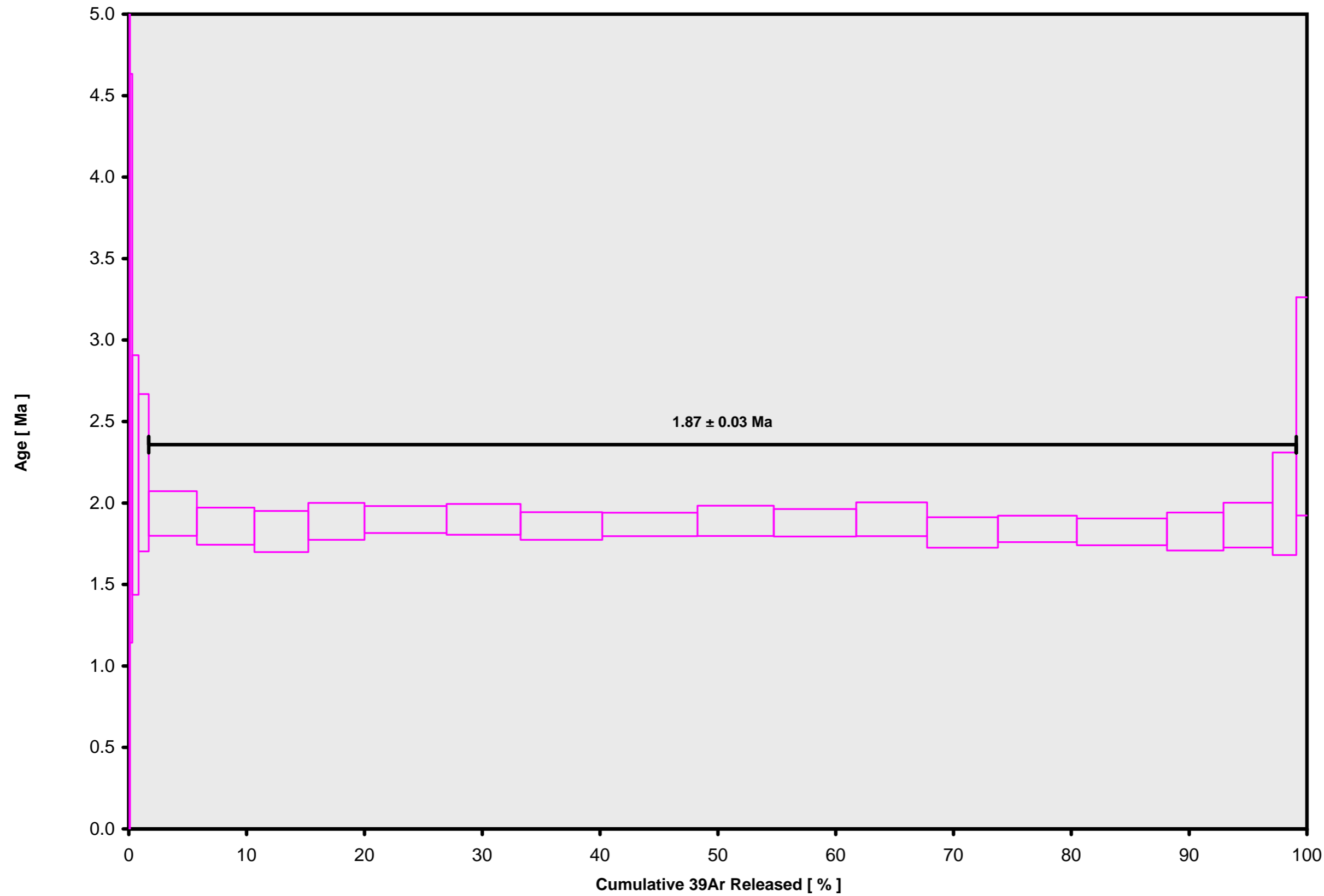
Intercept Values	36Ar	1σ	r2		37Ar	1σ	r2		38Ar	1σ	r2		39Ar	1σ	r2		40Ar	1σ	r2		
07C1694	0.00 W	0.000207	0.000007	0.4373	LIN #	0.000021	0.000005	0.1523	LIN #	0.000058	0.000004	0.1084	LIN #	0.001062	0.000007	0.9973	LIN #	0.065601	0.000118	0.9340	EXP #
07C1695	0.01 W	0.000194	0.000006	0.2297	LIN #	0.000022	0.000006	0.3471	LIN #	0.000071	0.000008	0.1488	LIN #	0.002380	0.000017	0.9810	EXP #	0.056856	0.000067	0.9876	EXP #
07C1696	0.09 W	0.000132	0.000004	0.2203	LIN #	0.000031	0.000005	0.4382	LIN #	0.000116	0.000003	0.3652	LIN # 2 3	0.006855	0.000028	0.2079	LIN #	0.045317	0.000051	0.9949	LIN #
07C1698	0.12 W	0.000133	0.000006	0.0591	LIN #	0.000065	0.000003	0.5774	LIN #	0.000252	0.000006	0.1057	LIN #	0.018266	0.000069	0.8799	LIN # 1	0.052214	0.000111	0.9738	EXP #
07C1699	0.18 W	0.000087	0.000006	0.3509	LIN #	0.000104	0.000005	0.3462	LIN #	0.000385	0.000006	0.2970	LIN #	0.029229	0.000041	0.9910	LIN # 1 8	0.047272	0.000039	0.9976	EXP # 7
07C1701	0.19 W	0.000122	0.000003	0.3047	LIN # 1 10	0.000481	0.000007	0.0511	LIN #	0.001711	0.000010	0.8538	LIN # 1	0.138583	0.000273	0.9886	LIN # 1	0.129808	0.000173	0.7822	LIN #
07C1702	0.27 W	0.000093	0.000003	0.4902	LIN # 3 5	0.000634	0.000006	0.3677	LIN #	0.002052	0.000017	0.6509	LIN # 7	0.166149	0.000362	0.9816	EXP # 2	0.135810	0.000306	0.0285	LIN #
07C1703	0.35 W	0.000069	0.000004	0.3532	LIN # 2	0.000631	0.000005	0.4740	LIN #	0.001875	0.000018	0.5958	LIN #	0.155185	0.000265	0.9876	LIN #	0.119885	0.000087	0.7605	LIN # 9
07C1705	0.44 W	0.000058	0.000002	0.9509	LIN # 8 10	0.000678	0.000004	0.7375	LIN #	0.001966	0.000008	0.8825	LIN #	0.161889	0.000328	0.9810	LIN #	0.123494	0.000189	0.0170	LIN # 9
07C1706	0.56 W	0.000070	0.000004	0.6813	LIN #	0.001024	0.000008	0.8333	LIN #	0.002876	0.000018	0.8363	LIN # 2	0.236481	0.000378	0.9884	LIN #	0.176576	0.000352	0.7861	LIN # 5
07C1707	0.65 W	0.000062	0.000005	0.4093	LIN #	0.000966	0.000005	0.8947	LIN # 3	0.002587	0.000019	0.6480	LIN #	0.213169	0.000239	0.9963	EXP # 1	0.158215	0.000160	0.8260	LIN # 7 9
07C1709	0.80 W	0.000073	0.000005	0.0569	LIN #	0.001086	0.000011	0.6393	LIN #	0.002875	0.000018	0.8039	LIN #	0.235474	0.000885	0.9450	LIN #	0.172227	0.000099	0.9761	EXP # 2 8
07C1710	0.88 W	0.000079	0.000004	0.4714	LIN #	0.001308	0.000008	0.7643	LIN #	0.003306	0.000014	0.8978	LIN #	0.274323	0.000904	0.9729	LIN # 1 2	0.199891	0.000274	0.9187	EXP # 6
07C1711	0.97 W	0.000058	0.000006	0.4996	LIN #	0.001103	0.000006	0.8931	LIN # 10	0.002681	0.000019	0.8021	LIN # 1	0.219885	0.000270	0.9921	LIN # 9	0.160147	0.000256	0.2925	LIN # 7
07C1713	1.15 W	0.000064	0.000005	0.5667	LIN # 1	0.001212	0.000005	0.8685	LIN #	0.002913	0.000013	0.9450	LIN # 1	0.237166	0.000247	0.9958	EXP #	0.173049	0.000282	0.8701	LIN #
07C1714	1.30 W	0.000046	0.000006	0.5573	LIN #	0.001080	0.000008	0.7190	LIN #	0.002472	0.000021	0.7456	LIN # 1 2	0.204260	0.001067	0.9114	LIN #	0.148215	0.000282	0.4267	LIN # 2 7
07C1715	1.44 W	0.000056	0.000003	0.4087	LIN # 1	0.001102	0.000008	0.7071	LIN # 5	0.002455	0.000022	0.7742	LIN # 1	0.204237	0.000377	0.9907	EXP # 1	0.145735	0.000189	0.2579	LIN # 7 9
07C1717	1.80 W	0.000061	0.000002	0.8659	LIN #	0.001275	0.000007	0.9022	LIN #	0.002771	0.000021	0.7940	LIN #	0.226949	0.000266	0.9938	LIN #	0.163994	0.000160	0.9039	LIN # 2
07C1718	2.18 W	0.000076	0.000007	0.3380	LIN #	0.001469	0.000010	0.8191	LIN #	0.003116	0.000034	0.4306	LIN #	0.259554	0.000322	0.9937	EXP #	0.187571	0.000357	0.7059	LIN #
07C1719	2.51 W	0.000051	0.000003	0.7585	LIN # 5	0.000988	0.000011	0.4157	LIN #	0.001958	0.000015	0.7574	LIN # 1	0.163022	0.000449	0.9828	EXP # 1 4	0.118907	0.000279	0.1299	LIN #
07C1721	3.12 W	0.000058	0.000004	0.4475	LIN #	0.000866	0.000012	0.3193	LIN #	0.001716	0.000010	0.7834	LIN #	0.141560	0.000330	0.9799	LIN # 1	0.106536	0.000313	0.2684	LIN # 1
07C1722	3.98 W	0.000038	0.000007	0.1452	LIN #	0.000451	0.000006	0.5503	LIN #	0.000839	0.000018	0.2766	LIN #	0.068214	0.000072	0.9962	EXP # 1	0.053947	0.000071	0.9909	EXP # 9
07C1723	4.66 W	0.000024	0.000006	0.2148	LIN #	0.000207	0.000005	0.3239	LIN #	0.000383	0.000008	0.1002	LIN #	0.030721	0.000076	0.9541	LIN # 4	0.026846	0.000027	0.9994	LIN #

Institute of Geophysics and Planetary Physics  
Scripps Institution of Oceanography, La Jolla, USA

Sample Parameters	Sample	Material	Location	Analyst	Temp	Standard (in Ma)	%1σ	J	%1σ	MDF	%1σ	Volume Ratio	Sensitivity (mol/volt)	Day	Month	Year	Hour	Min	Resist	Irradiation	Project	Experiment	Nmb	Standard Name	
07C1694	0.00 W	TAM-1 4D4-06	Groundmass 210-300μm	Tama'i, Samoa	Jamie Russell	0	28.03	0.01	0.00158	0.23	1.00378	0.16	1.015	1.012E-19	20	APR	2007	18	47	001	OSU4D06	Samoa	07C1694	01	FCT-3
07C1695	0.01 W	TAM-1 4D4-06	Groundmass 210-300μm	Tama'i, Samoa	Jamie Russell	0.01	28.03	0.01	0.00158	0.23	1.00378	0.16	1.0152	1.012E-19	20	APR	2007	19	14	001	OSU4D06	Samoa	07C1694	01	FCT-3
07C1696	0.09 W	TAM-1 4D4-06	Groundmass 210-300μm	Tama'i, Samoa	Jamie Russell	0.09	28.03	0.01	0.00158	0.23	1.00378	0.16	1.0151	1.012E-19	20	APR	2007	19	40	001	OSU4D06	Samoa	07C1694	01	FCT-3
07C1698	0.12 W	TAM-1 4D4-06	Groundmass 210-300μm	Tama'i, Samoa	Jamie Russell	0.12	28.03	0.01	0.00158	0.23	1.00378	0.16	1.0149	1.012E-19	20	APR	2007	20	32	001	OSU4D06	Samoa	07C1694	01	FCT-3
07C1699	0.18 W	TAM-1 4D4-06	Groundmass 210-300μm	Tama'i, Samoa	Jamie Russell	0.18	28.03	0.01	0.00158	0.23	1.00378	0.16	1.0148	1.012E-19	20	APR	2007	20	58	001	OSU4D06	Samoa	07C1694	01	FCT-3
07C1701	0.19 W	TAM-1 4D4-06	Groundmass 210-300μm	Tama'i, Samoa	Jamie Russell	0.19	28.03	0.01	0.00158	0.23	1.00378	0.16	1.0146	1.012E-19	21	APR	2007	06	33	001	OSU4D06	Samoa	07C1694	01	FCT-3
07C1702	0.27 W	TAM-1 4D4-06	Groundmass 210-300μm	Tama'i, Samoa	Jamie Russell	0.27	28.03	0.01	0.00158	0.23	1.00378	0.16	1.0147	1.012E-19	21	APR	2007	07	00	001	OSU4D06	Samoa	07C1694	01	FCT-3
07C1703	0.35 W	TAM-1 4D4-06	Groundmass 210-300μm	Tama'i, Samoa	Jamie Russell	0.35	28.03	0.01	0.00158	0.23	1.00378	0.16	1.0147	1.012E-19	21	APR	2007	07	26	001	OSU4D06	Samoa	07C1694	01	FCT-3
07C1705	0.44 W	TAM-1 4D4-06	Groundmass 210-300μm	Tama'i, Samoa	Jamie Russell	0.44	28.03	0.01	0.00158	0.23	1.00378	0.16	1.0148	1.012E-19	21	APR	2007	08	19	001	OSU4D06	Samoa	07C1694	01	FCT-3
07C1706	0.56 W	TAM-1 4D4-06	Groundmass 210-300μm	Tama'i, Samoa	Jamie Russell	0.56	28.03	0.01	0.00158	0.23	1.00378	0.16	1.0148	1.012E-19	21	APR	2007	08	45	001	OSU4D06	Samoa	07C1694	01	FCT-3
07C1707	0.65 W	TAM-1 4D4-06	Groundmass 210-300μm	Tama'i, Samoa	Jamie Russell	0.65	28.03	0.01	0.00158	0.23	1.00378	0.16	1.0148	1.012E-19	21	APR	2007	09	11	001	OSU4D06	Samoa	07C1694	01	FCT-3
07C1709	0.80 W	TAM-1 4D4-06	Groundmass 210-300μm	Tama'i, Samoa	Jamie Russell	0.8	28.03	0.01	0.00158	0.23	1.00378	0.16	1.0148	1.012E-19	21	APR	2007	10	04	001	OSU4D06	Samoa	07C1694	01	FCT-3
07C1710	0.88 W	TAM-1 4D4-06	Groundmass 210-300μm	Tama'i, Samoa	Jamie Russell	0.88	28.03	0.01	0.00158	0.23	1.00378	0.16	1.0148	1.012E-19	21	APR	2007	10	31	001	OSU4D06	Samoa	07C1694	01	FCT-3
07C1711	0.97 W	TAM-1 4D4-06	Groundmass 210-300μm	Tama'i, Samoa	Jamie Russell	0.97	28.03	0.01	0.00158	0.23	1.00378	0.16	1.0148	1.012E-19	21	APR	2007	10	57	001	OSU4D06	Samoa	07C1694	01	FCT-3
07C1713	1.15 W	TAM-1 4D4-06	Groundmass 210-300μm	Tama'i, Samoa	Jamie Russell	1.15	28.03	0.01	0.00158	0.23	1.00378	0.16	1.0149	1.012E-19	21	APR	2007	11	55	001	OSU4D06	Samoa	07C1694	01	FCT-3
07C1714	1.30 W	TAM-1 4D4-06	Groundmass 210-300μm	Tama'i, Samoa	Jamie Russell	1.3	28.03	0.01	0.00158	0.23	1.00378	0.16	1.015	1.012E-19	21	APR	2007	12	21	001	OSU4D06	Samoa	07C1694	01	FCT-3
07C1715	1.44 W	TAM-1 4D4-06	Groundmass 210-300μm	Tama'i, Samoa	Jamie Russell	1.44	28.03	0.01	0.00158	0.23	1.00378	0.16	1.015	1.012E-19	21	APR	2007	12	47	001	OSU4D06	Samoa	07C1694	01	FCT-3
07C1717	1.80 W	TAM-1 4D4-06	Groundmass 210-300μm	Tama'i, Samoa	Jamie Russell	1.8	28.03	0.01	0.00158	0.23	1.00378	0.16	1.0151	1.012E-19	21	APR	2007	13	39	001	OSU4D06	Samoa	07C1694	01	FCT-3
07C1718	2.18 W	TAM-1 4D4-06	Groundmass 210-300μm	Tama'i, Samoa	Jamie Russell	2.18	28.03	0.01	0.00158	0.23	1.00378	0.16	1.0152	1.012E-19	21	APR	2007	14	06	001	OSU4D06	Samoa	07C1694	01	FCT-3
07C1719	2.51 W	TAM-1 4D4-06	Groundmass 210-300μm	Tama'i, Samoa	Jamie Russell	2.51	28.03	0.01	0.00158	0.23	1.00378	0.16	1.0153	1.012E-19	21	APR	2007	14	32	001	OSU4D06	Samoa	07C1694	01	FCT-3
07C1721	3.12 W	TAM-1 4D4-06	Groundmass 210-300μm	Tama'i, Samoa	Jamie Russell	3.12	28.03	0.01	0.00158	0.23	1.00378	0.16	1.0152	1.012E-19	21	APR	2007	15	25	001	OSU4D06	Samoa	07C1694	01	FCT-3
07C1722	3.98 W	TAM-1 4D4-06	Groundmass 210-300μm	Tama'i, Samoa	Jamie Russell	3.98	28.03	0.01	0.00158	0.23	1.00378	0.16	1.0153	1.012E-19	21	APR	2007	15	51	001	OSU4D06	Samoa	07C1694	01	FCT-3
07C1723	4.66 W	TAM-1 4D4-06	Groundmass 210-300μm	Tama'i, Samoa	Jamie Russell	4.66	28.03	0.01	0.00158	0.23	1.00378	0.16	1.0153	1.012E-19	21	APR	2007	16	16	001	OSU4D06	Samoa	07C1694	01	FCT-3

Irradiation Constants	40/36(a)		40/36(c)		38/36(a)		38/36(c)		39/37(ca)		38/37(ca)		36/37(ca)		40/39(k)		38/39(k)		36/38(cl)		K/Ca		K/Cl		Ca/Cl		
		%1σ		%1σ		%1σ		%1σ		%1σ		%1σ		%1σ		%1σ		%1σ		%1σ		%1σ		%1σ		%1σ	
07C1694	0.00 W	295.5	0	0.018	35	0.1869	0	1.493	3	0.000709	1.83	0.000032	21.9	0.000269	0.37	0.00165	24.9	0.01211	0.1	0	0	0.43	2	0	0	0	0
07C1695	0.01 W	295.5	0	0.018	35	0.1869	0	1.493	3	0.000709	1.83	0.000032	21.9	0.000269	0.37	0.00165	24.9	0.01211	0.1	0	0	0.43	2	0	0	0	0
07C1696	0.09 W	295.5	0	0.018	35	0.1869	0	1.493	3	0.000709	1.83	0.000032	21.9	0.000269	0.37	0.00165	24.9	0.01211	0.1	0	0	0.43	2	0	0	0	0
07C1698	0.12 W	295.5	0	0.018	35	0.1869	0	1.493	3	0.000709	1.83	0.000032	21.9	0.000269	0.37	0.00165	24.9	0.01211	0.1	0	0	0.43	2	0	0	0	0
07C1699	0.18 W	295.5	0	0.018	35	0.1869	0	1.493	3	0.000709	1.83	0.000032	21.9	0.000269	0.37	0.00165	24.9	0.01211	0.1	0	0	0.43	2	0	0	0	0
07C1701	0.19 W	295.5	0	0.018	35	0.1869	0	1.493	3	0.000709	1.83	0.000032	21.9	0.000269	0.37	0.00165	24.9	0.01211	0.1	0	0	0.43	2	0	0	0	0
07C1702	0.27 W	295.5	0	0.018	35	0.1869	0	1.493	3	0.000709	1.83	0.000032	21.9	0.000269	0.37	0.00165	24.9	0.01211	0.1	0	0	0.43	2	0	0	0	0
07C1703	0.35 W	295.5	0	0.018	35	0.1869	0	1.493	3	0.000709	1.83	0.000032	21.9	0.000269	0.37	0.00165	24.9	0.01211	0.1	0	0	0.43	2	0	0	0	0
07C1705	0.44 W	295.5	0	0.018	35	0.1869	0	1.493	3	0.000709	1.83	0.000032	21.9	0.000269	0.37	0.00165	24.9	0.01211	0.1	0	0	0.43	2	0	0	0	0
07C1706	0.56 W	295.5	0	0.018	35	0.1869	0	1.493	3	0.000709	1.83	0.000032	21.9	0.000269	0.37	0.00165	24.9	0.01211	0.1	0	0	0.43	2	0	0	0	0
07C1707	0.65 W	295.5	0	0.018	35	0.1869	0	1.493	3	0.000709	1.83	0.000032	21.9	0.000269	0.37	0.00165	24.9	0.01211	0.1	0	0	0.43	2	0	0	0	0
07C1709	0.80 W	295.5	0	0.018	35	0.1869	0	1.493	3	0.000709	1.83	0.000032	21.9	0.000269	0.37	0.00165	24.9	0.01211	0.1	0	0	0.43	2	0	0	0	0
07C1710	0.88 W	295.5	0	0.018	35	0.1869	0	1.493	3	0.000709	1.83	0.000032	21.9	0.000269	0.37	0.00165	24.9	0.01211	0.1	0	0	0.43	2	0	0	0	0
07C1711	0.97 W	295.5	0	0.018	35	0.1869	0	1.493	3	0.000709	1.83	0.000032	21.9	0.000269	0.37	0.00165	24.9	0.01211	0.1	0	0	0.43	2	0	0	0	0
07C1713	1.15 W	295.5	0	0.018	35	0.1869	0	1.493	3	0.000709	1.83	0.000032	21.9	0.000269	0.37	0.00165	24.9	0.01211	0.1	0	0	0.43	2	0	0	0	0
07C1714	1.30 W	295.5	0	0.018	35	0.1869	0	1.493	3	0.000709	1.83	0.000032	21.9	0.000269	0.37	0.00165	24.9	0.01211	0.1	0	0	0.43	2	0	0	0	0
07C1715	1.44 W	295.5	0	0.018	35	0.1869	0	1.493	3	0.000709	1.83	0.000032	21.9	0.000269	0.37	0.00165	24.9	0.01211	0.1	0	0	0.43	2	0	0	0	0
07C1717	1.80 W	295.5	0	0.018	35	0.1869	0	1.493	3	0.000709	1.83	0.000032	21.9	0.000269	0.37	0.00165	24.9	0.01211	0.1	0	0	0.43	2	0	0	0	0
07C1718	2.18 W	295.5	0	0.018	35	0.1869	0	1.493	3	0.000709	1.83	0.000032	21.9	0.000269	0.37	0.00165	24.9	0.01211	0.1	0	0	0.43	2	0	0	0	0
07C1719	2.51 W	295.5	0	0.018	35	0.1869	0	1.493	3	0.000709	1.83	0.000032	21.9	0.000269	0.37	0.00165	24.9	0.01211	0.1	0	0	0.43	2	0	0	0	0
07C1721	3.12 W	295.5	0	0.018	35	0.1869	0	1.493	3	0.000709	1.83	0.000032	21.9	0.000269	0.37	0.00165	24.9	0.01211	0.1	0	0	0.43	2	0	0	0	0
07C1722	3.98 W	295.5	0	0.018	35	0.1869	0	1.493	3	0.000709	1.83	0.000032	21.9	0.000269	0.37	0.00165	24.9	0.01211	0.1	0	0	0.43	2	0	0	0	0
07C1723	4.66 W	295.5	0	0.018	35	0.1869	0	1.493	3	0.000709	1.83	0.000032	21.9	0.000269	0.37	0.00165	24.9	0.01211	0.1	0	0	0.43	2	0	0	0	0

**07C1694.AGE >>> TAM-1 4D4-06 >>> SAMOA PROJECT**



**Ar-Ages in Ma**

**WEIGHTED PLATEAU**

1.87 ± 0.03

**TOTAL FUSION**

1.89 ± 0.03

**NORMAL ISOCHRON**

1.83 ± 0.07

**INVERSE ISOCHRON**

1.83 ± 0.07

**MSWD (PROBABILITY)**

0.45 (97%)

**Sample Info**

Groundmass 210-300µm

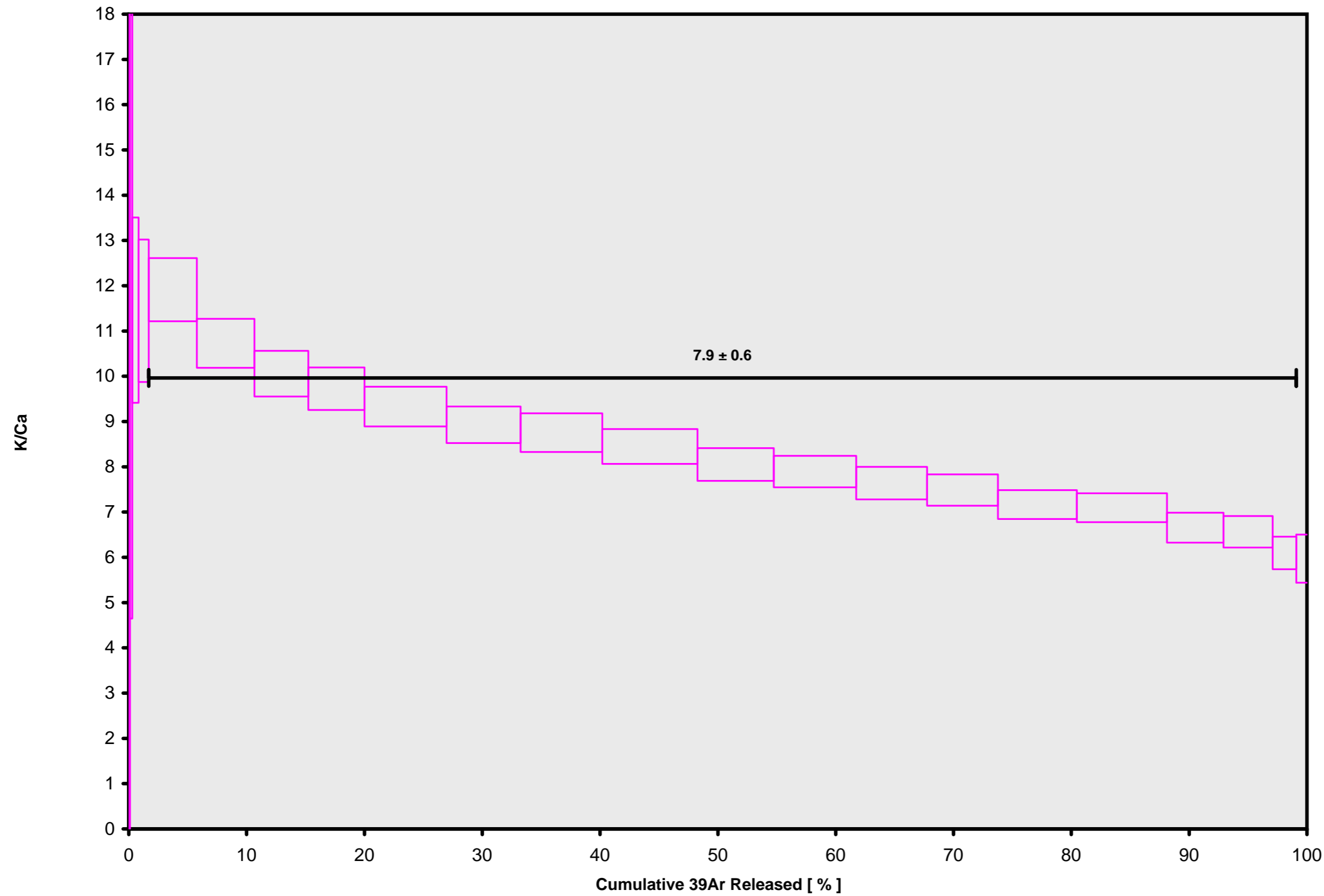
Tama'i, Samoa

Jamie Russell

IRR = OSU4D06

J = 0.00158000 ± 0.00000363

07C1694.AGE >>> TAM-1 4D4-06 >>> SAMOA PROJECT



Ar-Ages in Ma

WEIGHTED PLATEAU

$1.87 \pm 0.03$

TOTAL FUSION

$1.89 \pm 0.03$

NORMAL ISOCHRON

$1.83 \pm 0.07$

INVERSE ISOCHRON

$1.83 \pm 0.07$

Sample Info

Groundmass 210-300 $\mu$ m

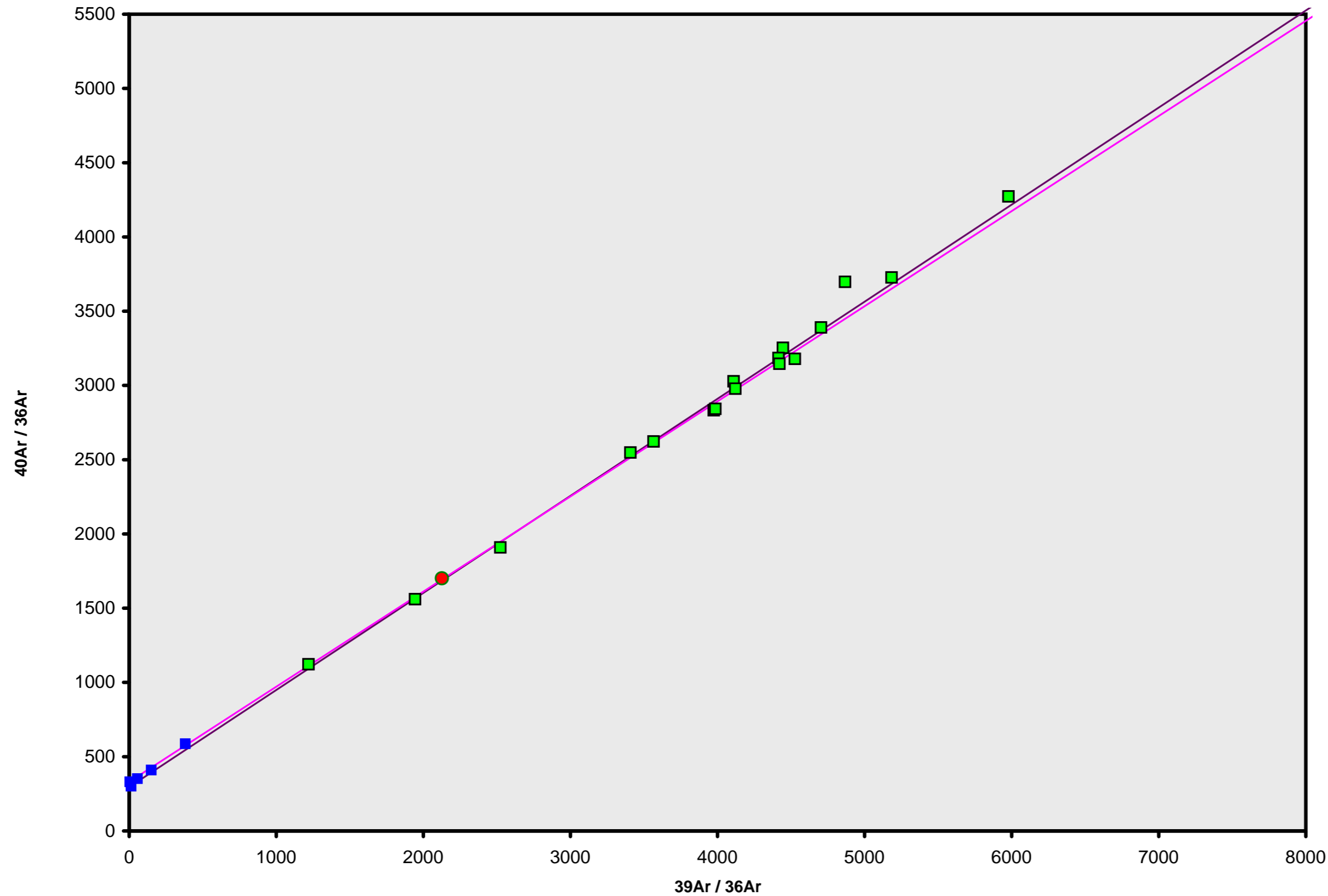
Tama'i, Samoa

Jamie Russell

IRR = OSU4D06

J =  $0.00158000 \pm 0.00000363$

07C1694.AGE >>> TAM-1 4D4-06 >>> SAMOA PROJECT



**Ar-Ages in Ma**

**WEIGHTED PLATEAU**

1.87 ± 0.03

**TOTAL FUSION**

1.89 ± 0.03

**NORMAL ISOCHRON**

1.83 ± 0.07

**INVERSE ISOCHRON**

1.83 ± 0.07

**MSWD (PROBABILITY)**

0.35 (99%)

**40AR/36AR INTERCEPT**

330.8 ± 79.3

**Sample Info**

Groundmass 210-300µm

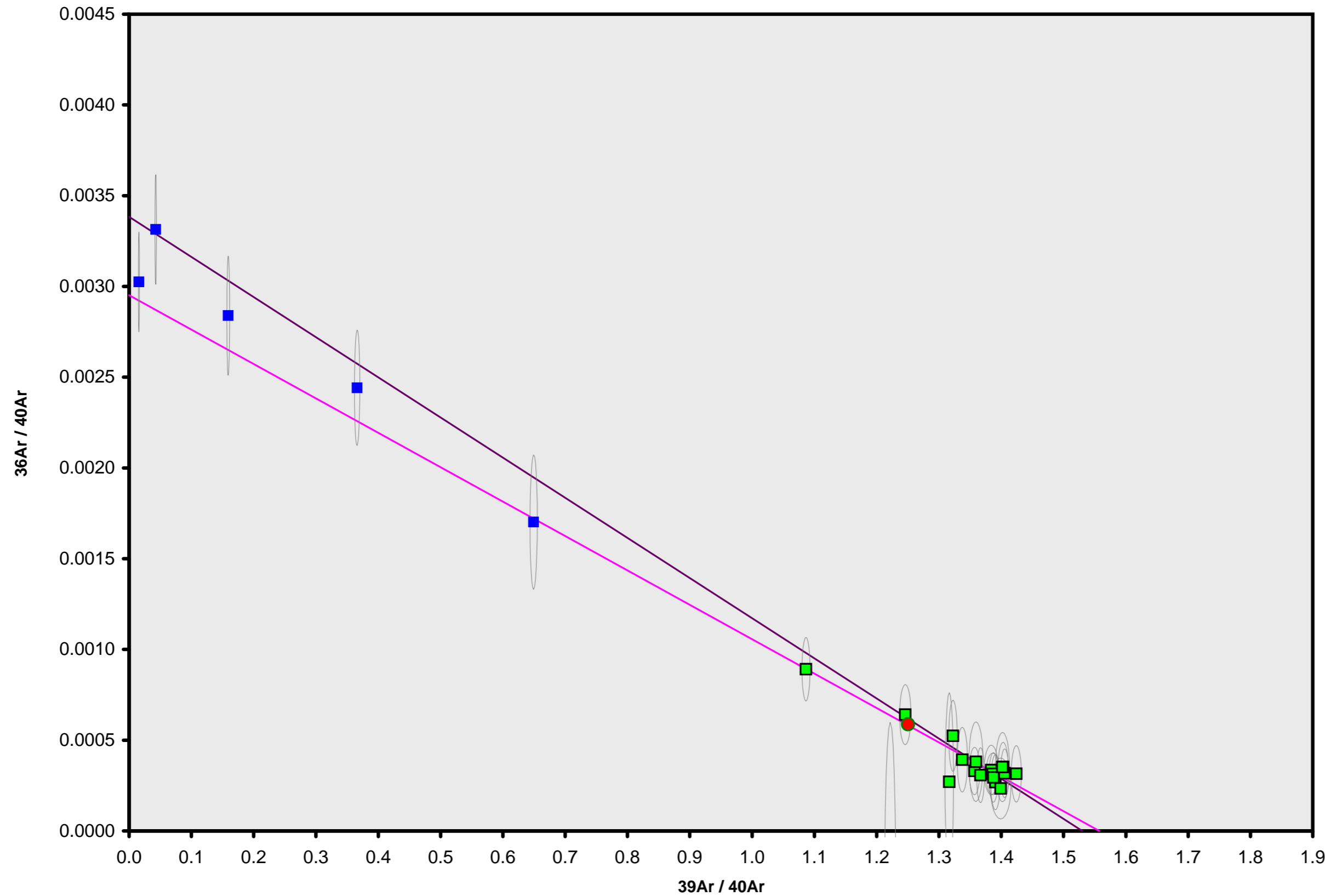
Tama'i, Samoa

Jamie Russell

IRR = OSU4D06

J = 0.00158000 ± 0.00000363

07C1694.AGE >>> TAM-1 4D4-06 >>> SAMOA PROJECT



Ar-Ages in Ma

WEIGHTED PLATEAU

$1.87 \pm 0.03$

TOTAL FUSION

$1.89 \pm 0.03$

NORMAL ISOCHRON

$1.83 \pm 0.07$

INVERSE ISOCHRON

$1.83 \pm 0.07$

MSWD (PROBABILITY)

0.39 (98%)

SPREADING FACTOR

21.7%

40AR/36AR INTERCEPT

$338.8 \pm 82.9$

Sample Info

Groundmass 210-300 $\mu\text{m}$

Tama'i, Samoa

Jamie Russell

IRR = OSU4D06

$J = 0.00158000 \pm 0.00000363$