

Incremental Heating		36Ar(a)	37Ar(ca)	38Ar(cl)	39Ar(k)	40Ar(r)	Age ± 2σ (Ma)	40Ar(r) (%)	39Ar(k) (%)	K/Ca ± 2σ
07C1245	0.00 W	0.002392	0.001323	0.000034	0.000761	0.027954	108.23 ± 61.65	3.80	0.03	0.247 ± 0.165
07C1246	0.01 W	0.002341	0.002144	0.000057	0.002163	0.015734	21.95 ± 25.46	2.22	0.08	0.434 ± 0.141
07C1248	0.03 W	0.001500	0.005930	0.000046	0.006340	0.015143	7.24 ± 4.35	3.30	0.23	0.460 ± 0.069
07C1249	0.06 W	0.001002	0.010907	0.000047	0.012924	0.017757	4.17 ± 2.11	5.66	0.47	0.510 ± 0.046
07C1250	0.09 W ✓	0.000504	0.018194	0.000036	0.022637	0.019684	2.64 ± 0.92	11.67	0.82	0.535 ± 0.032
07C1252	0.18 W ✓	0.000349	0.042154	0.000066	0.051211	0.039476	2.34 ± 0.32	27.67	1.85	0.522 ± 0.026
07C1253	0.24 W ✓	0.000246	0.075214	0.000000	0.083904	0.061901	2.24 ± 0.21	45.96	3.02	0.480 ± 0.021
07C1254	0.27 W ✓	0.000156	0.104976	0.000031	0.111140	0.084748	2.31 ± 0.13	64.64	4.00	0.455 ± 0.021
07C1255	0.35 W ✓	0.000121	0.129726	0.000000	0.130047	0.094249	2.20 ± 0.14	72.30	4.69	0.431 ± 0.019
07C1257	0.41 W ✓	0.000080	0.136869	0.000034	0.141524	0.105537	2.26 ± 0.12	81.48	5.10	0.445 ± 0.019
07C1258	0.48 W ✓	0.000090	0.164165	0.000000	0.176823	0.129315	2.22 ± 0.08	82.76	6.37	0.463 ± 0.020
07C1259	0.53 W ✓	0.000083	0.154278	0.000000	0.171995	0.126234	2.23 ± 0.08	83.63	6.20	0.479 ± 0.021
07C1260	0.62 W ✓	0.000087	0.131489	0.000023	0.160238	0.115295	2.18 ± 0.09	81.60	5.77	0.524 ± 0.024
07C1262	0.63 W ✓	0.000054	0.079450	0.000030	0.102243	0.073118	2.17 ± 0.14	82.01	3.68	0.553 ± 0.025
07C1263	0.71 W ✓	0.000095	0.144190	0.000026	0.190056	0.133650	2.13 ± 0.10	82.43	6.85	0.567 ± 0.025
07C1264	0.74 W ✓	0.000088	0.116261	0.000055	0.162600	0.114990	2.15 ± 0.12	81.41	5.86	0.601 ± 0.027
07C1265	0.88 W ✓	0.000092	0.096030	0.000095	0.143837	0.100618	2.12 ± 0.10	78.63	5.18	0.644 ± 0.029
07C1267	0.88 W ✓	0.000079	0.080579	0.000125	0.129358	0.092887	2.18 ± 0.13	79.68	4.66	0.690 ± 0.032
07C1268	0.97 W ✓	0.000104	0.072969	0.000166	0.124124	0.085020	2.08 ± 0.12	73.27	4.47	0.731 ± 0.033
07C1269	1.15 W ✓	0.000120	0.068226	0.000171	0.121681	0.082403	2.05 ± 0.14	69.82	4.38	0.767 ± 0.034
07C1270	1.18 W ✓	0.000105	0.049015	0.000137	0.089380	0.062137	2.11 ± 0.18	66.49	3.22	0.784 ± 0.039
07C1273	1.24 W ✓	0.000128	0.074399	0.000285	0.118236	0.082039	2.10 ± 0.13	68.33	4.26	0.683 ± 0.031
07C1274	1.33 W ✓	0.000136	0.065700	0.000226	0.097286	0.069231	2.16 ± 0.20	63.20	3.51	0.637 ± 0.029
07C1276	1.50 W ✓	0.000122	0.046830	0.000171	0.067353	0.049279	2.22 ± 0.24	57.75	2.43	0.618 ± 0.028
07C1277	1.77 W ✓	0.000146	0.040717	0.000136	0.055254	0.040356	2.22 ± 0.27	48.32	1.99	0.584 ± 0.027
07C1278	2.06 W ✓	0.000192	0.052114	0.000196	0.060933	0.043259	2.15 ± 0.26	43.20	2.20	0.503 ± 0.023
07C1280	2.42 W ✓	0.000198	0.052455	0.000187	0.057742	0.040142	2.11 ± 0.30	40.63	2.08	0.473 ± 0.022
07C1281	2.83 W ✓	0.000324	0.042159	0.000146	0.041209	0.027055	1.99 ± 0.50	22.02	1.48	0.420 ± 0.019
07C1282	3.45 W ✓	0.000570	0.055598	0.000178	0.050367	0.035333	2.13 ± 0.39	17.33	1.81	0.390 ± 0.017
07C1283	4.04 W	0.000985	0.059236	0.000236	0.049391	0.025787	1.58 ± 0.63	8.14	1.78	0.359 ± 0.017
07C1285	4.72 W	0.000987	0.060914	0.000175	0.042430	0.033947	2.43 ± 0.66	10.42	1.53	0.300 ± 0.014
Σ		0.013478	2.234212	0.003115	2.775187	2.044278				

Information on Analysis	Results	40(r)/39(k) ± 2σ	Age ± 2σ (Ma)	MSWD	39Ar(k) (%),n	K/Ca ± 2σ
Sample = TIS-1 3E8-06 Material = Groundmass 125-300μm Location = Tisa, Samoa Analyst = Anthony Koppers Project = SAMOA Mass Discrimination Law = LIN Irradiation = OSU3E06 J = 0.00167840 ± 0.00000470 FCT-3 = 28.030 ± 0.003 Ma	Age Plateau	0.7176 ± 0.0090 ± 1.25%	2.18 ± 0.03 ± 1.37%	0.93 56%	95.89 25	0.519 ± 0.040
		Minimal External Error ± 0.05 Analytical Error ± 0.03		1.29 1.0000	2σ Confidence Limit Error Magnification	
	Total Fusion Age	0.7366 ± 0.0150 ± 2.03%	2.23 ± 0.05 ± 2.11%		31	0.534 ± 0.021
		Minimal External Error ± 0.06 Analytical Error ± 0.05				

Normal Isochron		39(k)/36(a) ± 2σ	40(a+r)/36(a) ± 2σ	r.i.
07C1245	0.00 W	0.3 ± 0.0	307.2 ± 7.1	0.5745
07C1246	0.01 W	0.9 ± 0.0	302.2 ± 8.0	0.9140
07C1248	0.03 W	4.2 ± 0.1	305.6 ± 6.3	0.9146
07C1249	0.06 W	12.9 ± 0.4	313.2 ± 9.5	0.9730
07C1250	0.09 W ✓	44.9 ± 2.1	334.6 ± 15.4	0.9805
07C1252	0.18 W ✓	146.8 ± 7.5	408.6 ± 21.1	0.9804
07C1253	0.24 W ✓	341.2 ± 27.1	547.3 ± 43.6	0.9950
07C1254	0.27 W ✓	711.4 ± 74.2	838.0 ± 87.5	0.9970
07C1255	0.35 W ✓	1070.4 ± 171.7	1071.2 ± 171.9	0.9990
07C1257	0.41 W ✓	1760.5 ± 403.7	1608.3 ± 368.9	0.9996
07C1258	0.48 W ✓	1961.6 ± 332.7	1730.0 ± 293.5	0.9993
07C1259	0.53 W ✓	2080.6 ± 381.7	1822.6 ± 334.3	0.9991
07C1260	0.62 W ✓	1839.5 ± 308.9	1619.1 ± 272.1	0.9985
07C1262	0.63 W ✓	1904.2 ± 575.4	1657.3 ± 500.9	0.9995
07C1263	0.71 W ✓	1994.1 ± 422.2	1697.7 ± 359.4	0.9993
07C1264	0.74 W ✓	1849.0 ± 434.0	1603.1 ± 376.0	0.9989
07C1265	0.88 W ✓	1567.5 ± 274.4	1392.0 ± 243.8	0.9991
07C1267	0.88 W ✓	1628.4 ± 370.9	1464.8 ± 333.7	0.9992
07C1268	0.97 W ✓	1190.3 ± 184.6	1110.8 ± 172.4	0.9988
07C1269	1.15 W ✓	1015.3 ± 159.0	983.1 ± 154.1	0.9984
07C1270	1.18 W ✓	847.4 ± 144.3	884.6 ± 150.7	0.9985
07C1273	1.24 W ✓	923.4 ± 93.4	936.2 ± 98.1	0.9645
07C1274	1.33 W ✓	716.1 ± 95.9	805.1 ± 110.3	0.9745
07C1276	1.50 W ✓	553.8 ± 67.1	700.7 ± 88.9	0.9538
07C1277	1.77 W ✓	379.1 ± 32.9	572.4 ± 54.3	0.9123
07C1278	2.06 W ✓	317.1 ± 23.1	520.6 ± 41.3	0.9101
07C1280	2.42 W ✓	291.4 ± 23.5	498.1 ± 43.2	0.9241
07C1281	2.83 W ✓	127.2 ± 7.9	379.0 ± 25.5	0.9164
07C1282	3.45 W ✓	88.4 ± 3.0	357.5 ± 13.3	0.8894
07C1283	4.04 W	50.1 ± 1.7	321.7 ± 11.2	0.9291
07C1285	4.72 W	43.0 ± 1.3	329.9 ± 10.3	0.9215

Results	40(a)/36(a) ± 2σ	40(r)/39(k) ± 2σ	Age ± 2σ (Ma)	MSWD
Normal Isochron	298.4021 ± 7.1050 ± 2.38%	0.7101 ± 0.0115 ± 1.62%	2.15 ± 0.04 ± 1.71%	0.92 57%
			Minimal External Error ± 0.05	
			Analytical Error ± 0.03	
Statistics	2σ Confidence Limit Error Magnification Number of Data Points	1.59 1.0000 25	Convergence Number of Iterations Calculated Line	0.000069972 73 Weighted York-2

Inverse Isochron		39(k)/40(a+r) ± 2σ	36(a)/40(a+r) ± 2σ	r.i.
07C1245	0.00 W	0.001035 ± 0.000034	0.003255 ± 0.000075	0.0036
07C1246	0.01 W	0.003057 ± 0.000036	0.003309 ± 0.000088	0.0058
07C1248	0.03 W	0.013830 ± 0.000123	0.003272 ± 0.000067	0.0564
07C1249	0.06 W	0.041175 ± 0.000293	0.003193 ± 0.000097	0.0501
07C1250	0.09 W ✓	0.134273 ± 0.001223	0.002989 ± 0.000137	0.0810
07C1252	0.18 W ✓	0.359181 ± 0.003666	0.002447 ± 0.000126	0.1225
07C1253	0.24 W ✓	0.623551 ± 0.004948	0.001827 ± 0.000145	0.0614
07C1254	0.27 W ✓	0.848958 ± 0.006919	0.001193 ± 0.000125	0.0580
07C1255	0.35 W ✓	0.999198 ± 0.007004	0.000934 ± 0.000150	0.0266
07C1257	0.41 W ✓	1.094607 ± 0.007372	0.000622 ± 0.000143	0.0218
07C1258	0.48 W ✓	1.133821 ± 0.007199	0.000578 ± 0.000098	0.0226
07C1259	0.53 W ✓	1.141601 ± 0.008723	0.000549 ± 0.000101	0.0190
07C1260	0.62 W ✓	1.136153 ± 0.010564	0.000618 ± 0.000104	0.0427
07C1262	0.63 W ✓	1.148999 ± 0.011202	0.000603 ± 0.000182	0.0269
07C1263	0.71 W ✓	1.174529 ± 0.008981	0.000589 ± 0.000125	0.0155
07C1264	0.74 W ✓	1.153393 ± 0.012564	0.000624 ± 0.000146	0.0122
07C1265	0.88 W ✓	1.126076 ± 0.008199	0.000718 ± 0.000126	0.0284
07C1267	0.88 W ✓	1.111704 ± 0.010321	0.000683 ± 0.000156	0.0208
07C1268	0.97 W ✓	1.071572 ± 0.008189	0.000900 ± 0.000140	0.0359
07C1269	1.15 W ✓	1.032789 ± 0.009092	0.001017 ± 0.000159	0.0420
07C1270	1.18 W ✓	0.957939 ± 0.009063	0.001130 ± 0.000193	0.0390
07C1273	1.24 W ✓	0.986330 ± 0.027294	0.001068 ± 0.000112	0.2590
07C1274	1.33 W ✓	0.889439 ± 0.027347	0.001242 ± 0.000170	0.2114
07C1276	1.50 W ✓	0.790335 ± 0.030136	0.001427 ± 0.000181	0.2955
07C1277	1.77 W ✓	0.662297 ± 0.025723	0.001747 ± 0.000166	0.4021
07C1278	2.06 W ✓	0.609040 ± 0.020011	0.001921 ± 0.000152	0.3940
07C1280	2.42 W ✓	0.585072 ± 0.019400	0.002008 ± 0.000174	0.3730
07C1281	2.83 W ✓	0.335601 ± 0.009039	0.002638 ± 0.000177	0.3911
07C1282	3.45 W ✓	0.247168 ± 0.004218	0.002797 ± 0.000104	0.4147
07C1283	4.04 W	0.155869 ± 0.002026	0.003109 ± 0.000108	0.2432
07C1285	4.72 W	0.130282 ± 0.001586	0.003031 ± 0.000095	0.2984

Results	40(a)/36(a) ± 2σ	40(r)/39(k) ± 2σ	Age ± 2σ (Ma)	MSWD
Inverse Isochron	298.2287 ± 7.0828 ± 2.37%	0.7151 ± 0.0112 ± 1.57%	2.17 ± 0.04 ± 1.66%	0.94 54%
			Minimal External Error ± 0.05 Analytical Error ± 0.03	
Statistics	2σ Confidence Limit Error Magnification Number of Data Points Spreading Factor	1.59 1.0000 25 74.4%	Convergence Number of Iterations Calculated Line	0.0006503051 3 Weighted York-2

Relative Abundances		36Ar	%1σ	37Ar	%1σ	38Ar	%1σ	39Ar	%1σ	40Ar	%1σ	Age ± 2σ (Ma)	40Ar(r) (%)	39Ar(k) (%)	K/Ca ± 2σ
07C1245	0.00 W	0.0023928	1.155	0.0013234	33.190	0.0004907	2.465	0.0007617	1.637	0.7349126	0.083	108.23 ± 61.65	3.80	0.03	0.247 ± 0.165
07C1246	0.01 W	0.0023414	1.326	0.0021440	16.148	0.0005212	2.399	0.0021644	0.583	0.7074343	0.068	21.95 ± 25.46	2.22	0.08	0.434 ± 0.141
07C1248	0.03 W	0.0015016	1.015	0.0059297	7.231	0.0004032	3.563	0.0063439	0.414	0.4583986	0.161	7.24 ± 4.35	3.30	0.23	0.460 ± 0.069
07C1249	0.06 W	0.0010050	1.503	0.0109070	4.019	0.0003913	3.293	0.0129313	0.316	0.3138884	0.165	4.17 ± 2.11	5.66	0.47	0.510 ± 0.046
07C1250	0.09 W ✓	0.0005088	2.259	0.0181936	2.219	0.0004049	2.847	0.0226496	0.350	0.1686247	0.291	2.64 ± 0.92	11.67	0.82	0.535 ± 0.032
07C1252	0.18 W ✓	0.0003603	2.472	0.0421541	1.453	0.0007530	2.052	0.0512406	0.314	0.1426610	0.401	2.34 ± 0.32	27.67	1.85	0.522 ± 0.026
07C1253	0.24 W ✓	0.0002661	3.666	0.0752137	0.931	0.0010620	1.360	0.0839570	0.246	0.1346964	0.310	2.24 ± 0.21	45.96	3.02	0.480 ± 0.021
07C1254	0.27 W ✓	0.0001845	4.410	0.1049764	1.227	0.0014092	1.140	0.1112147	0.206	0.1310972	0.349	2.31 ± 0.13	64.64	4.00	0.455 ± 0.021
07C1255	0.35 W ✓	0.0001564	6.227	0.1297259	0.893	0.0016004	1.018	0.1301390	0.219	0.1303659	0.270	2.20 ± 0.14	72.30	4.69	0.431 ± 0.019
07C1257	0.41 W ✓	0.0001172	7.857	0.1368689	0.865	0.0017670	0.970	0.1416209	0.170	0.1295255	0.286	2.26 ± 0.12	81.48	5.10	0.445 ± 0.019
07C1258	0.48 W ✓	0.0001343	5.683	0.1641648	0.857	0.0021437	1.093	0.1769391	0.199	0.1562447	0.242	2.22 ± 0.08	82.76	6.37	0.463 ± 0.020
07C1259	0.53 W ✓	0.0001242	6.097	0.1542781	0.792	0.0020835	0.990	0.1721047	0.282	0.1509453	0.253	2.23 ± 0.08	83.63	6.20	0.479 ± 0.021
07C1260	0.62 W ✓	0.0001225	5.958	0.1314892	1.125	0.0019838	0.920	0.1603313	0.222	0.1413000	0.405	2.18 ± 0.09	81.60	5.77	0.524 ± 0.024
07C1262	0.63 W ✓	0.0000751	10.800	0.0794496	0.946	0.0012806	1.280	0.1022996	0.199	0.0891533	0.442	2.17 ± 0.14	82.01	3.68	0.553 ± 0.025
07C1263	0.71 W ✓	0.0001341	7.514	0.1441901	0.978	0.0023502	1.456	0.1901587	0.289	0.1621286	0.245	2.13 ± 0.10	82.43	6.85	0.567 ± 0.025
07C1264	0.74 W ✓	0.0001192	8.644	0.1162615	0.848	0.0020441	0.941	0.1626828	0.468	0.1412439	0.274	2.15 ± 0.12	81.41	5.86	0.601 ± 0.027
07C1265	0.88 W ✓	0.0001176	6.823	0.0960301	0.947	0.0018573	1.199	0.1439056	0.205	0.1279707	0.297	2.12 ± 0.10	78.63	5.18	0.644 ± 0.029
07C1267	0.88 W ✓	0.0001012	8.937	0.0805793	1.086	0.0017088	1.091	0.1294155	0.325	0.1165739	0.328	2.18 ± 0.13	79.68	4.66	0.690 ± 0.032
07C1268	0.97 W ✓	0.0001240	6.520	0.0729693	0.989	0.0016913	0.942	0.1241760	0.199	0.1160386	0.323	2.08 ± 0.12	73.27	4.47	0.731 ± 0.033
07C1269	1.15 W ✓	0.0001383	6.785	0.0682262	0.938	0.0016693	0.876	0.1217297	0.221	0.1180189	0.378	2.05 ± 0.14	69.82	4.38	0.767 ± 0.034
07C1270	1.18 W ✓	0.0001187	7.558	0.0490155	1.412	0.0012408	1.356	0.0894147	0.258	0.0934520	0.394	2.11 ± 0.18	66.49	3.22	0.784 ± 0.039
07C1273	1.24 W ✓	0.0001482	4.366	0.0743992	1.016	0.0017435	1.072	0.1182888	0.194	0.1200698	1.367	2.10 ± 0.13	68.33	4.26	0.683 ± 0.031
07C1274	1.33 W ✓	0.0001536	5.910	0.0656998	0.980	0.0014319	1.679	0.0973321	0.372	0.1095391	1.489	2.16 ± 0.20	63.20	3.51	0.637 ± 0.029
07C1276	1.50 W ✓	0.0001343	5.485	0.0468298	1.001	0.0010106	1.175	0.0673867	0.245	0.0853326	1.888	2.22 ± 0.24	57.75	2.43	0.618 ± 0.028
07C1277	1.77 W ✓	0.0001568	4.029	0.0407174	1.075	0.0008332	1.016	0.0552824	0.260	0.0835184	1.922	2.22 ± 0.27	48.32	1.99	0.584 ± 0.027
07C1278	2.06 W ✓	0.0002063	3.377	0.0521145	1.091	0.0009717	1.503	0.0609701	0.365	0.1001484	1.600	2.15 ± 0.26	43.20	2.20	0.503 ± 0.023
07C1280	2.42 W ✓	0.0002123	3.748	0.0524547	1.126	0.0009250	0.788	0.0577789	0.256	0.0987869	1.636	2.11 ± 0.30	40.63	2.08	0.473 ± 0.022
07C1281	2.83 W ✓	0.0003354	2.984	0.0421586	1.125	0.0007068	2.003	0.0412389	0.205	0.1228597	1.330	1.99 ± 0.50	22.02	1.48	0.420 ± 0.019
07C1282	3.45 W ✓	0.0005850	1.635	0.0555984	0.913	0.0008959	1.586	0.0504065	0.261	0.2038597	0.812	2.13 ± 0.39	17.33	1.81	0.390 ± 0.017
07C1283	4.04 W	0.0010011	1.634	0.0592357	1.120	0.0010201	1.290	0.0494333	0.383	0.3169579	0.524	1.58 ± 0.63	8.14	1.78	0.359 ± 0.017
07C1285	4.72 W	0.0010037	1.442	0.0609139	1.264	0.0008752	1.419	0.0424729	0.295	0.3257450	0.532	2.43 ± 0.66	10.42	1.53	0.300 ± 0.014
Σ		0.0140797	0.480	2.2342124	0.209	0.0392701	0.241	2.7767714	0.057	6.0314921	0.093				

Information on Analysis and Constants Used in Calculations	
Sample = TIS-1 3E8-06	Age Equations = Conventional
Material = Groundmass 125-300µm	Negative Intensities = Allowed
Location = Tisa, Samoa	Decay Constant 40K = 5.530 ± 0.048 E-10 1/a
Analyst = Anthony Koppers	Decay Constant 39Ar = 2.940 ± 0.016 E-07 1/h
Project = SAMOA	Decay Constant 37Ar = 8.230 ± 0.012 E-04 1/h
Mass Discrimination Law = LIN	Decay Constant 36Cl = 2.236 ± 0.045 E-06 1/a
Irradiation = OSU3E06	Production Ratio 36/38 in Cl = 316.0 ± 15.8
J = 0.00167840 ± 0.00000470	
FCT-3 = 28.030 ± 0.003 Ma	
IGSN = KOP000051	
Preferred Age = Plateau Age	
Classification = Eruption Age	
Experiment Type = Incremental Heating	
Extraction Method = Bulk Laser Heating	
Heating = 600 sec	
Isolation = 15.00 min	
Instrument = MAP215-50	
Lithology = Mugearite	
Lat-Lon = 14°25.9'S - 171°19.9'E	

Results	40(r)/39(k) ± 2σ	Age ± 2σ (Ma)	MSWD	39Ar(k) (% , n)	K/Ca ± 2σ
Age Plateau	0.7176 ± 0.0090 ± 1.25%	2.18 ± 0.03 ± 1.37%	0.93	95.89 25	0.519 ± 0.040
	Minimal External Error ± 0.05		1.29	2σ Confidence Limit	
	Analytical Error ± 0.03		1.0000	Error Magnification	
Total Fusion Age	0.7366 ± 0.0150 ± 2.03%	2.23 ± 0.05 ± 2.11%		31	0.534 ± 0.021
	Minimal External Error ± 0.06				
	Analytical Error ± 0.05				
Normal Isochron	0.7101 ± 0.0115 ± 1.62%	2.15 ± 0.04 ± 1.71%	0.92	95.89 25	
	Minimal External Error ± 0.05		1.59	2σ Confidence Limit	
	Analytical Error ± 0.03		1.0000	Error Magnification	
Inverse Isochron	0.7151 ± 0.0112 ± 1.57%	2.17 ± 0.04 ± 1.66%	0.94	95.89 25	
	Minimal External Error ± 0.05		1.59	2σ Confidence Limit	
	Analytical Error ± 0.03		1.0000	Error Magnification	

Degassing Patterns		36Ar(a)	%1σ	36Ar(c)	%1σ	36Ar(ca)	%1σ	36Ar(cl)	%1σ	37Ar(ca)	%1σ	38Ar(a)	%1σ	38Ar(c)	%1σ	38Ar(k)	%1σ	38Ar(ca)	%1σ	38Ar(cl)	%1σ	39Ar(k)	%1σ	39Ar(ca)	%1σ	40Ar(r)	%1σ	40Ar(a)	%1σ	40Ar(c)	%1σ	40Ar(k)	%1σ	
07C1245	0.00 W	0.002392	1.16	0.000000	0.00	0.000000	33.19	0.000000	38.76	0.001323	33.19	0.000447	1.16	0.000000	0.00	0.000009	1.64	0.000000	39.76	0.000034	39.13	0.000761	1.64	0.000001	33.24	0.027954	29.30	0.706957	1.16	0.000000	0.00	0.000001	24.95	
07C1246	0.01 W	0.002341	1.33	0.000000	0.00	0.000001	16.15	0.000000	24.58	0.002144	16.15	0.000437	1.33	0.000000	0.00	0.000026	0.59	0.000000	27.21	0.000057	25.17	0.002163	0.58	0.000002	16.25	0.015734	58.37	0.691697	1.33	0.000000	0.00	0.000004	24.91	
07C1248	0.03 W	0.001500	1.02	0.000000	0.00	0.000002	7.24	0.000000	32.36	0.005930	7.23	0.000280	1.02	0.000000	0.00	0.000077	0.43	0.000000	23.06	0.000046	32.80	0.006340	0.41	0.000004	7.46	0.015143	30.15	0.443245	1.02	0.000000	0.00	0.000010	24.90	
07C1249	0.06 W	0.001002	1.51	0.000000	0.00	0.000003	4.04	0.000000	28.53	0.010907	4.02	0.000187	1.51	0.000000	0.00	0.000157	0.33	0.000000	22.27	0.000047	29.03	0.012924	0.32	0.000008	4.42	0.017757	25.31	0.296110	1.51	0.000000	0.00	0.000021	24.90	
07C1250	0.09 W	✓	0.000504	2.28	0.000000	0.00	0.000005	2.25	0.000000	33.16	0.018194	2.22	0.000094	2.28	0.000000	0.00	0.000274	0.36	0.000001	22.01	0.000036	33.60	0.022637	0.35	0.000013	2.88	0.019684	17.43	0.148904	2.28	0.000000	0.00	0.000037	24.90
07C1252	0.18 W	✓	0.000349	2.55	0.000000	0.00	0.000011	1.50	0.000000	24.27	0.042154	1.45	0.000065	2.55	0.000000	0.00	0.000620	0.33	0.000001	21.95	0.000066	24.86	0.051211	0.31	0.000030	2.34	0.039476	6.82	0.103101	2.55	0.000000	0.00	0.000084	24.90
07C1253	0.24 W	✓	0.000246	3.97	0.000000	0.00	0.000020	1.00	0.000000	0.00	0.075214	0.93	0.000046	3.97	0.000000	0.00	0.001016	0.27	0.000002	21.92	0.000060	0.00	0.083904	0.25	0.000053	2.05	0.061901	4.71	0.072657	3.97	0.000000	0.00	0.000138	24.90
07C1254	0.27 W	✓	0.000156	5.21	0.000000	0.00	0.000028	1.28	0.000000	53.74	0.104976	1.23	0.000029	5.21	0.000000	0.00	0.001346	0.23	0.000003	21.93	0.000031	54.01	0.111140	0.21	0.000074	2.20	0.084748	2.89	0.046166	5.21	0.000000	0.00	0.000183	24.90
07C1255	0.35 W	✓	0.000121	8.02	0.000000	0.00	0.000035	0.97	0.000000	0.00	0.129726	0.89	0.000023	8.02	0.000000	0.00	0.001575	0.24	0.000004	21.92	0.000000	0.00	0.130047	0.22	0.000092	2.04	0.094249	3.08	0.035902	8.02	0.000000	0.00	0.000215	24.90
07C1257	0.41 W	✓	0.000080	11.47	0.000000	0.00	0.000037	0.94	0.000000	52.40	0.136869	0.87	0.000015	11.47	0.000000	0.00	0.001714	0.20	0.000004	21.92	0.000034	52.67	0.141524	0.17	0.000097	2.02	0.105537	2.61	0.023755	11.47	0.000000	0.00	0.000234	24.90
07C1258	0.48 W	✓	0.000090	8.48	0.000000	0.00	0.000044	0.93	0.000000	0.00	0.164165	0.86	0.000017	8.48	0.000000	0.00	0.002141	0.22	0.000005	21.92	0.000000	0.00	0.176823	0.20	0.000116	2.02	0.129315	1.77	0.026638	8.48	0.000000	0.00	0.000292	24.90
07C1259	0.53 W	✓	0.000083	9.17	0.000000	0.00	0.000042	0.87	0.000000	0.00	0.154278	0.79	0.000015	9.17	0.000000	0.00	0.002083	0.30	0.000005	21.91	0.000000	0.00	0.171995	0.28	0.000109	1.99	0.126234	1.80	0.024427	9.17	0.000000	0.00	0.000284	24.90
07C1260	0.62 W	✓	0.000087	8.39	0.000000	0.00	0.000035	1.18	0.000000	83.13	0.131489	1.12	0.000016	8.39	0.000000	0.00	0.001940	0.24	0.000004	21.93	0.000023	83.30	0.160238	0.22	0.000093	2.15	0.115295	1.94	0.025741	8.39	0.000000	0.00	0.000264	24.90
07C1262	0.63 W	✓	0.000054	15.11	0.000000	0.00	0.000021	1.02	0.000000	56.21	0.079450	0.95	0.000010	15.11	0.000000	0.00	0.001238	0.22	0.000003	21.92	0.000030	56.47	0.102243	0.20	0.000056	2.06	0.073118	3.32	0.015866	15.11	0.000000	0.00	0.000169	24.90
07C1263	0.71 W	✓	0.000095	10.58	0.000000	0.00	0.000039	1.05	0.000000	133.85	0.144190	0.98	0.000018	10.58	0.000000	0.00	0.002302	0.31	0.000005	21.92	0.000026	133.96	0.190056	0.29	0.000102	2.07	0.133650	2.25	0.028165	10.58	0.000000	0.00	0.000314	24.90
07C1264	0.74 W	✓	0.000088	11.73	0.000000	0.00	0.000031	0.93	0.000000	39.56	0.116261	0.85	0.000016	11.73	0.000000	0.00	0.001969	0.48	0.000004	21.92	0.000055	39.92	0.162600	0.47	0.000082	2.02	0.114990	2.67	0.025986	11.73	0.000000	0.00	0.000268	24.90
07C1265	0.88 W	✓	0.000092	8.75	0.000000	0.00	0.000026	1.02	0.000000	24.44	0.096030	0.95	0.000017	8.75	0.000000	0.00	0.001742	0.23	0.000003	21.92	0.000095	25.03	0.143837	0.20	0.000068	2.06	0.100618	2.39	0.027115	8.75	0.000000	0.00	0.000237	24.90
07C1267	0.88 W	✓	0.000079	11.38	0.000000	0.00	0.000022	1.15	0.000000	16.50	0.080579	1.09	0.000015	11.38	0.000000	0.00	0.001567	0.34	0.000003	21.93	0.000125	17.35	0.129358	0.32	0.000057	2.13	0.092887	2.91	0.023474	11.38	0.000000	0.00	0.000213	24.90
07C1268	0.97 W	✓	0.000104	7.75	0.000000	0.00	0.000020	1.06	0.000000	11.22	0.072969	0.99	0.000019	7.75	0.000000	0.00	0.001503	0.22	0.000002	21.92	0.000166	12.44	0.124124	0.20	0.000052	2.08	0.085020	2.85	0.030814	7.75	0.000000	0.00	0.000205	24.90
07C1269	1.15 W	✓	0.000120	7.83	0.000000	0.00	0.000018	1.01	0.000000	10.37	0.068226	0.94	0.000022	7.83	0.000000	0.00	0.001474	0.24	0.000002	21.92	0.000171	11.69	0.121681	0.22	0.000048	2.06	0.082403	3.41	0.035415	7.83	0.000000	0.00	0.000201	24.90
07C1270	1.18 W	✓	0.000105	8.51	0.000000	0.00	0.000013	1.46	0.000000	13.63	0.049015	1.41	0.000020	8.51	0.000000	0.00	0.001082	0.28	0.000002	21.95	0.000137	14.66	0.089380	0.26	0.000035	2.31	0.062137	4.31	0.031168	8.51	0.000000	0.00	0.000147	24.90
07C1273	1.24 W	✓	0.000128	5.05	0.000000	0.00	0.000020	1.08	0.000000	8.56	0.074399	1.02	0.000024	5.05	0.000000	0.00	0.001432	0.22	0.000002	21.92	0.000285	10.12	0.118236	0.19	0.000053	2.09	0.082039	3.07	0.037836	5.05	0.000000	0.00	0.000195	24.90
07C1274	1.33 W	✓	0.000136	6.68	0.000000	0.00	0.000018	1.05	0.000000	12.11	0.065700	0.98	0.000025	6.68	0.000000	0.00	0.001178	0.38	0.000002	21.92	0.000226	13.25	0.097286	0.37	0.000047	2.08	0.069231	4.54	0.040148	6.68	0.000000	0.00	0.000161	24.90
07C1276	1.50 W	✓	0.000122	6.06	0.000000	0.00	0.000013	1.07	0.000000	8.93	0.046830	1.00	0.000023	6.06	0.000000	0.00	0.000816	0.26	0.000001	21.92	0.000171	10.42	0.067353	0.24	0.000033	2.09	0.049279	5.50	0.035942	6.06	0.000000	0.00	0.000111	24.90
07C1277	1.77 W	✓	0.000146	4.33	0.000000	0.00	0.000011	1.14	0.000000	8.41	0.040717	1.07	0.000027	4.33	0.000000	0.00	0.000669	0.28	0.000001	21.93	0.000136	9.99	0.055254	0.26	0.000029	2.12	0.040356	6.10	0.043071	4.33	0.000000	0.00	0.000091	24.90
07C1278	2.06 W	✓	0.000192	3.63	0.000000	0.00	0.000014	1.15	0.000000	9.32	0.052114	1.09	0.000036	3.63	0.000000	0.00	0.000738	0.38	0.000002	21.93	0.000196	10.77	0.060933	0.37	0.000037	2.13	0.043259	6.03	0.056789	3.63	0.000000	0.00	0.000101	24.90
07C1280	2.42 W	✓	0.000198	4.02	0.000000	0.00	0.000014	1.19	0.000000	6.78	0.052455	1.13	0.000037	4.02	0.000000	0.00	0.000699	0.27	0.000002	21.93	0.000187	8.66	0.057742	0.26	0.000037	2.15	0.040142	7.11	0.058550	4.02	0.000000	0.00	0.000095	24.90
07C1281	2.83 W	✓	0.000324	3.09	0.000000	0.00	0.000011	1.18	0.000000	11.20	0.042159	1.13	0.000061	3.09	0.000000	0.00	0.000499	0.23	0.000001	21.93	0.000146	12.43	0.041209	0.21	0.000030	2.15	0.027055	12.49	0.095737	3.09	0.000000	0.00	0.000068	24.90
07C1282	3.45 W	✓	0.000570	1.68	0.000000	0.00	0.000015	0.99	0.000000	9.74	0.055598	0.91	0.000107	1.68	0.000000	0.00	0.000610	0.28	0.000002	21.92	0.000178	11.13	0.050367	0.26	0.000039	2.05	0.035333	9.27	0.168443	1.68	0.000000	0.00	0.000083	24.90
07C1283	4.04 W		0.000985	1.66	0.000000	0.00	0.000016	1.18	0.000000	7.93	0.059236	1.12	0.000184	1.66	0.000000	0.00	0.000598	0.40	0.000002	21.93	0.000236	9.58	0.049391	0.38	0.000042	2.15	0.025787	19.82	0.291089	1.66	0.000000	0.00	0.000081	24.90
07C1285	4.72 W		0.000987	1.47	0.000000	0.00	0.000016	1.32	0.000000	9.09	0.060914	1.26	0.000185	1.47	0.000000	0.00	0.000514	0.31	0.000002	21.94	0.000175	10.57	0.042430	0.30	0.000043	2.22	0.033947	13.59	0.291728	1.47	0.00			

Additional Parameters		40(r)/39(k)	1 σ	40(r+a)	1 σ	40Ar/39Ar	1 σ	37Ar/39Ar	1 σ	36Ar/39Ar	1 σ	Time (days)	37Ar (decay)	39Ar (decay)	40Ar (moles)
07C1245	0.00 W	36.746980	10.78345	0.734911	0.00061	964.880255	15.81452	1.737554	0.57740	3.141522	0.06294	182.720	37.02362296	1.00129099	7.437E-20
07C1246	0.01 W	7.274516	4.24627	0.707431	0.00048	326.842759	1.91950	0.990538	0.16005	1.081737	0.01567	182.740	37.03835327	1.00129113	7.159E-20
07C1248	0.03 W	2.388586	0.72018	0.458388	0.00074	72.258080	0.32097	0.934700	0.06769	0.236699	0.00260	182.779	37.06681459	1.00129140	4.639E-20
07C1249	0.06 W	1.373984	0.34780	0.313867	0.00052	24.273511	0.08644	0.843453	0.03400	0.077720	0.00119	182.799	37.08105346	1.00129154	3.177E-20
07C1250	0.09 W ✓	0.869549	0.15163	0.168587	0.00049	7.444921	0.03388	0.803264	0.01804	0.022464	0.00051	182.819	37.09631545	1.00129169	1.706E-20
07C1252	0.18 W ✓	0.770846	0.05265	0.142576	0.00057	2.784137	0.01419	0.822670	0.01223	0.007031	0.00018	182.859	37.12533055	1.00129197	1.444E-20
07C1253	0.24 W ✓	0.737762	0.03478	0.134558	0.00042	1.604349	0.00635	0.895860	0.00863	0.003170	0.00012	182.880	37.14061076	1.00129212	1.363E-20
07C1254	0.27 W ✓	0.762529	0.02210	0.130914	0.00046	1.178775	0.00478	0.943907	0.01174	0.001659	0.00007	182.899	37.15436834	1.00129225	1.327E-20
07C1255	0.35 W ✓	0.724730	0.02237	0.130151	0.00036	1.001744	0.00348	0.996826	0.00917	0.001202	0.00007	182.917	37.16813100	1.00129238	1.319E-20
07C1257	0.41 W ✓	0.745720	0.01947	0.129292	0.00038	0.914593	0.00305	0.966446	0.00852	0.000828	0.00007	182.956	37.19618184	1.00129265	1.311E-20
07C1258	0.48 W ✓	0.731328	0.01304	0.155953	0.00039	0.883042	0.00277	0.927804	0.00816	0.000759	0.00004	182.975	37.21047040	1.00129279	1.581E-20
07C1259	0.53 W ✓	0.733940	0.01338	0.150662	0.00039	0.877055	0.00332	0.896420	0.00754	0.000721	0.00004	182.996	37.22578566	1.00129294	1.528E-20
07C1260	0.62 W ✓	0.719523	0.01404	0.141036	0.00058	0.881300	0.00407	0.820109	0.00940	0.000764	0.00005	183.015	37.24008559	1.00129307	1.430E-20
07C1262	0.63 W ✓	0.715141	0.02380	0.088985	0.00040	0.871493	0.00422	0.776637	0.00751	0.000734	0.00008	183.054	37.26870193	1.00129335	9.022E-21
07C1263	0.71 W ✓	0.703214	0.01595	0.161815	0.00041	0.852596	0.00323	0.758262	0.00773	0.000705	0.00005	183.072	37.28199556	1.00129348	1.641E-20
07C1264	0.74 W ✓	0.707194	0.01918	0.140976	0.00039	0.868217	0.00471	0.714651	0.00692	0.000733	0.00006	183.091	37.29580550	1.00129361	1.429E-20
07C1265	0.88 W ✓	0.699526	0.01677	0.127733	0.00038	0.889269	0.00321	0.667313	0.00646	0.000817	0.00006	183.109	37.30910880	1.00129374	1.295E-20
07C1267	0.88 W ✓	0.718059	0.02100	0.116360	0.00039	0.900773	0.00416	0.622640	0.00705	0.000782	0.00007	183.145	37.33572964	1.00129399	1.180E-20
07C1268	0.97 W ✓	0.684958	0.01954	0.115834	0.00038	0.934469	0.00354	0.587628	0.00593	0.000998	0.00007	183.163	37.34904718	1.00129412	1.174E-20
07C1269	1.15 W ✓	0.677203	0.02313	0.117818	0.00045	0.969516	0.00424	0.560473	0.00540	0.001136	0.00008	183.182	37.36288196	1.00129425	1.194E-20
07C1270	1.18 W ✓	0.695195	0.03001	0.093305	0.00037	1.045152	0.00492	0.548181	0.00787	0.001328	0.00010	183.200	37.37620919	1.00129438	9.457E-21
07C1273	1.24 W ✓	0.693854	0.02136	0.119875	0.00164	1.015056	0.01402	0.628963	0.00651	0.001252	0.00005	183.711	37.75545055	1.00129799	1.215E-20
07C1274	1.33 W ✓	0.711624	0.03239	0.109379	0.00163	1.125416	0.01727	0.675007	0.00708	0.001578	0.00009	183.731	37.76995394	1.00129813	1.109E-20
07C1276	1.50 W ✓	0.731653	0.04025	0.085221	0.00161	1.266312	0.02411	0.694941	0.00716	0.001993	0.00011	183.769	37.79897745	1.00129840	8.636E-21
07C1277	1.77 W ✓	0.730381	0.04460	0.083427	0.00161	1.510758	0.02930	0.736535	0.00814	0.002836	0.00011	183.790	37.81401624	1.00129854	8.452E-21
07C1278	2.06 W ✓	0.709947	0.04289	0.100048	0.00160	1.642583	0.02696	0.854755	0.00983	0.003383	0.00011	183.808	37.82802326	1.00129868	1.014E-20
07C1280	2.42 W ✓	0.695198	0.04946	0.098692	0.00162	1.709741	0.02832	0.907852	0.01048	0.003675	0.00014	183.848	37.85761066	1.00129896	9.997E-21
07C1281	2.83 W ✓	0.656525	0.08200	0.122792	0.00163	2.979217	0.04010	1.022301	0.01169	0.008132	0.00024	183.867	37.87163383	1.00129909	1.243E-20
07C1282	3.45 W ✓	0.701512	0.06506	0.203777	0.00166	4.044316	0.03449	1.103001	0.01048	0.011607	0.00019	183.886	37.88618185	1.00129923	2.063E-20
07C1283	4.04 W	0.522102	0.10353	0.316876	0.00166	6.411836	0.04165	1.198296	0.01419	0.020251	0.00034	183.906	37.90073547	1.00129936	3.208E-20
07C1285	4.72 W	0.800066	0.10876	0.325675	0.00173	7.669484	0.04665	1.434184	0.01861	0.023631	0.00035	183.944	37.92933920	1.00129963	3.297E-20

Procedure Blanks		36Ar	1σ	37Ar	1σ	38Ar	1σ	39Ar	1σ	40Ar	1σ
07C1245	0.00 W	0.000015	0.000006	0.000012	0.000009	0.000008	0.000010	0.000031	0.000007	0.006147	0.000357
07C1246	0.01 W	0.000015	0.000006	0.000015	0.000009	0.000009	0.000010	0.000039	0.000007	0.006492	0.000353
07C1248	0.03 W	0.000018	0.000006	0.000018	0.000009	0.000010	0.000010	0.000050	0.000007	0.007043	0.000346
07C1249	0.06 W	0.000020	0.000006	0.000018	0.000009	0.000010	0.000010	0.000054	0.000007	0.007268	0.000343
07C1250	0.09 W	0.000022	0.000006	0.000019	0.000009	0.000011	0.000010	0.000056	0.000007	0.007476	0.000340
07C1252	0.18 W	0.000026	0.000006	0.000019	0.000009	0.000011	0.000010	0.000059	0.000007	0.007792	0.000336
07C1253	0.24 W	0.000028	0.000006	0.000019	0.000009	0.000011	0.000010	0.000060	0.000007	0.007923	0.000335
07C1254	0.27 W	0.000029	0.000006	0.000019	0.000009	0.000010	0.000010	0.000061	0.000007	0.008024	0.000334
07C1255	0.35 W	0.000030	0.000006	0.000019	0.000009	0.000010	0.000010	0.000061	0.000007	0.008112	0.000333
07C1257	0.41 W	0.000030	0.000006	0.000020	0.000009	0.000009	0.000010	0.000064	0.000007	0.008256	0.000333
07C1258	0.48 W	0.000030	0.000006	0.000020	0.000009	0.000008	0.000010	0.000066	0.000007	0.008316	0.000333
07C1259	0.53 W	0.000028	0.000006	0.000020	0.000009	0.000007	0.000010	0.000068	0.000007	0.008374	0.000334
07C1260	0.62 W	0.000027	0.000006	0.000020	0.000009	0.000006	0.000010	0.000071	0.000007	0.008424	0.000335
07C1262	0.63 W	0.000023	0.000006	0.000020	0.000009	0.000004	0.000010	0.000078	0.000007	0.008518	0.000339
07C1263	0.71 W	0.000021	0.000006	0.000020	0.000009	0.000003	0.000010	0.000082	0.000007	0.008562	0.000341
07C1264	0.74 W	0.000020	0.000006	0.000020	0.000009	0.000003	0.000010	0.000086	0.000007	0.008609	0.000343
07C1265	0.88 W	0.000019	0.000006	0.000019	0.000009	0.000002	0.000010	0.000090	0.000007	0.008657	0.000346
07C1267	0.88 W	0.000018	0.000006	0.000016	0.000009	0.000002	0.000010	0.000097	0.000007	0.008764	0.000352
07C1268	0.97 W	0.000019	0.000006	0.000014	0.000009	0.000002	0.000010	0.000101	0.000007	0.008824	0.000356
07C1269	1.15 W	0.000021	0.000006	0.000011	0.000009	0.000002	0.000011	0.000104	0.000007	0.008892	0.000360
07C1270	1.18 W	0.000024	0.000006	0.000007	0.000009	0.000003	0.000011	0.000106	0.000007	0.008964	0.000364
07C1273	1.24 W	0.000020	0.000005	0.000017	0.000005	0.000001	0.000006	0.000024	0.000006	0.004794	0.001636
07C1274	1.33 W	0.000019	0.000005	0.000018	0.000005	0.000001	0.000006	0.000035	0.000006	0.004480	0.001622
07C1276	1.50 W	0.000024	0.000005	0.000019	0.000005	0.000002	0.000006	0.000051	0.000006	0.005800	0.001604
07C1277	1.77 W	0.000029	0.000005	0.000018	0.000005	0.000004	0.000006	0.000057	0.000006	0.007505	0.001601
07C1278	2.06 W	0.000037	0.000005	0.000018	0.000005	0.000006	0.000006	0.000061	0.000006	0.009719	0.001601
07C1280	2.42 W	0.000058	0.000005	0.000015	0.000005	0.000011	0.000006	0.000065	0.000006	0.016376	0.001612
07C1281	2.83 W	0.000072	0.000005	0.000013	0.000005	0.000014	0.000006	0.000064	0.000006	0.020469	0.001622
07C1282	3.45 W	0.000087	0.000005	0.000011	0.000005	0.000018	0.000006	0.000062	0.000006	0.025351	0.001636
07C1283	4.04 W	0.000105	0.000005	0.000008	0.000005	0.000023	0.000006	0.000058	0.000006	0.030884	0.001654
07C1285	4.72 W	0.000146	0.000005	0.000002	0.000005	0.000033	0.000006	0.000046	0.000006	0.043642	0.001697

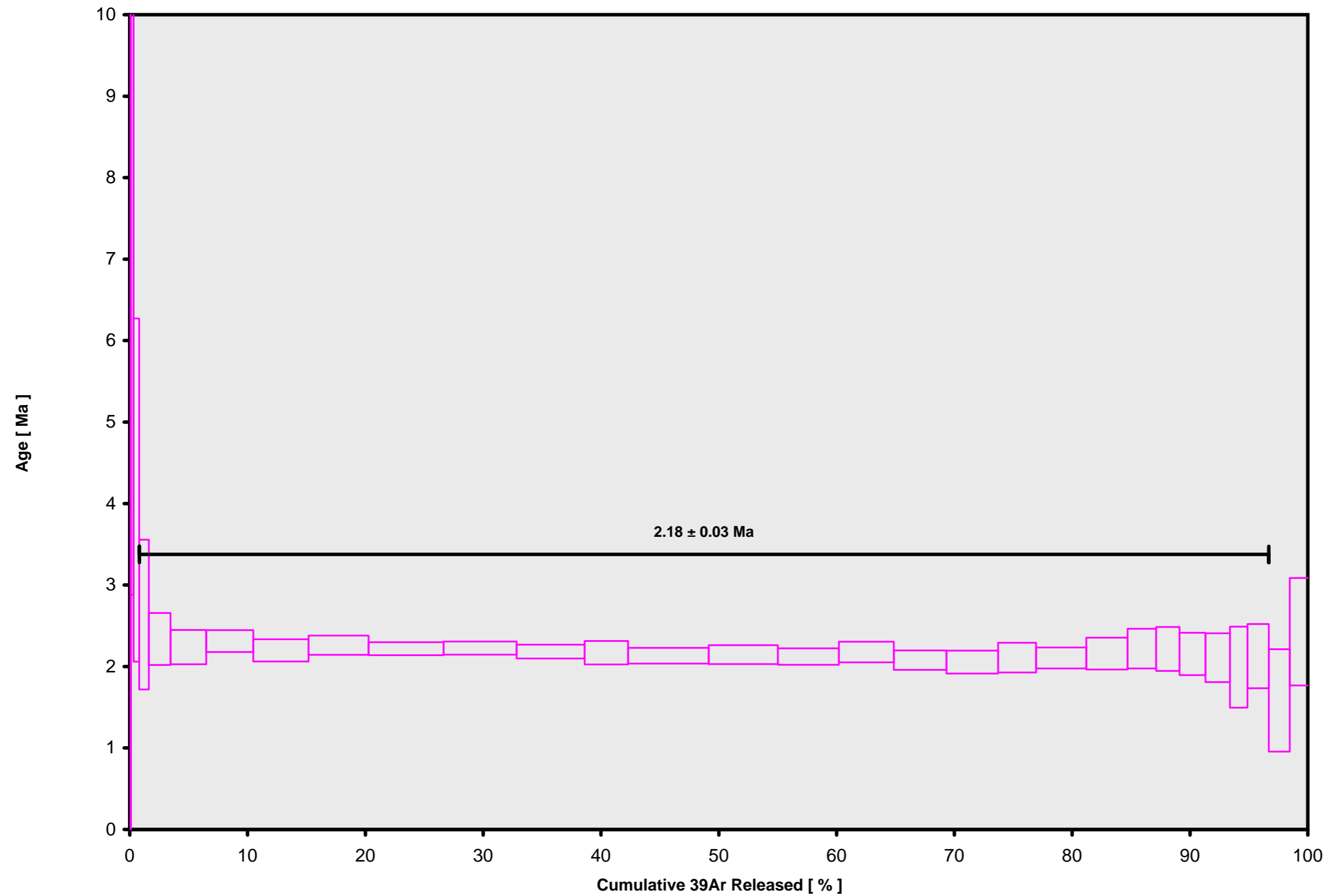
Intercept Values		36Ar	1σ	r2		37Ar	1σ	r2		38Ar	1σ	r2		39Ar	1σ	r2		40Ar	1σ	r2	
07C1245	0.00 W	0.002409	0.000022	0.5253	LIN #	0.000048	0.000008	0.7726	LIN #	0.000495	0.000006	0.0388	LIN #	0.000783	0.000010	0.9990	LIN #	0.730323	0.000490	0.9971	EXP # 6
07C1246	0.01 W	0.002358	0.000027	0.5670	LIN #	0.000072	0.000003	0.9757	LIN #	0.000526	0.000007	0.2377	LIN #	0.002177	0.000010	0.9990	LIN #	0.703584	0.000317	0.9986	EXP #
07C1248	0.03 W	0.001519	0.000010	0.6814	LIN #	0.000177	0.000007	0.7003	LIN #	0.000410	0.000010	0.0194	LIN #	0.006314	0.000023	0.9773	LIN #	0.458473	0.000640	0.9892	LIN # 2
07C1249	0.06 W	0.001024	0.000012	0.1822	LIN #	0.000311	0.000008	0.2381	LIN #	0.000398	0.000008	0.0054	LIN #	0.012821	0.000034	0.2228	LIN # 1	0.316317	0.000380	0.9839	LIN # 1
07C1250	0.09 W	0.000530	0.000009	0.0115	LIN #	0.000507	0.000006	0.0013	LIN #	0.000412	0.000006	0.3043	LIN #	0.022417	0.000069	0.8934	LIN # 1 8	0.173430	0.000348	0.8408	LIN # 1 2
07C1252	0.18 W	0.000386	0.000006	0.1217	LIN #	0.001149	0.000012	0.0458	LIN #	0.000757	0.000012	0.1866	LIN #	0.050627	0.000137	0.9189	LIN #	0.148113	0.000456	0.7842	LIN # 1 8
07C1253	0.24 W	0.000293	0.000008	0.1569	LIN # 1	0.002035	0.000009	0.8681	LIN #	0.001064	0.000010	0.6190	LIN # 5 10	0.082907	0.000155	0.9754	LIN # 1	0.140388	0.000246	0.9706	LIN # 1
07C1254	0.27 W	0.000213	0.000006	0.4413	LIN #	0.002831	0.000027	0.6227	LIN #	0.001408	0.000012	0.5767	LIN #	0.109794	0.000143	0.9933	LIN # 1	0.136931	0.000309	0.6131	LIN # 1
07C1255	0.35 W	0.000186	0.000008	0.0155	LIN #	0.003494	0.000017	0.9003	LIN #	0.001597	0.000012	0.5188	LIN #	0.128480	0.000192	0.9859	LIN #	0.136310	0.000113	0.4253	LIN # 1 2
07C1257	0.41 W	0.000147	0.000007	0.5078	LIN #	0.003682	0.000016	0.8509	LIN #	0.001761	0.000013	0.8723	LIN # 1	0.139785	0.000083	0.9984	LIN # 1 9 10	0.135598	0.000161	0.0965	LIN # 7
07C1258	0.48 W	0.000163	0.000005	0.0821	LIN #	0.004411	0.000020	0.9304	LIN #	0.002133	0.000020	0.5325	LIN #	0.174632	0.000208	0.9946	LIN # 1	0.161954	0.000176	0.8950	LIN # 1
07C1259	0.53 W	0.000152	0.000005	0.4310	LIN #	0.004145	0.000012	0.9677	LIN #	0.002073	0.000017	0.3885	LIN #	0.169865	0.000394	0.9693	LIN #	0.156795	0.000182	0.8525	LIN #
07C1260	0.62 W	0.000149	0.000004	0.1280	LIN #	0.003534	0.000030	0.6144	LIN #	0.001973	0.000014	0.8230	LIN # 1	0.158236	0.000243	0.9928	LIN # 1 2	0.147337	0.000457	0.2344	LIN # 1 2
07C1262	0.63 W	0.000098	0.000005	0.4040	LIN #	0.002142	0.000010	0.8499	LIN #	0.001274	0.000012	0.7230	LIN # 1	0.101005	0.000120	0.9955	LIN # 1 8	0.096124	0.000198	0.6082	LIN # 1
07C1263	0.71 W	0.000155	0.000008	0.0454	LIN #	0.003869	0.000025	0.8021	LIN #	0.002334	0.000032	0.4309	LIN #	0.187689	0.000451	0.9812	LIN # 1	0.167986	0.000201	0.7299	LIN # 9
07C1264	0.74 W	0.000139	0.000008	0.1953	LIN #	0.003122	0.000012	0.8905	LIN #	0.002030	0.000015	0.7615	LIN # 1	0.160586	0.000705	0.9480	LIN # 1	0.147479	0.000177	0.0169	LIN #
07C1265	0.88 W	0.000136	0.000005	0.3560	LIN #	0.002580	0.000014	0.8872	LIN #	0.001843	0.000019	0.6166	LIN #	0.142050	0.000182	0.9941	LIN # 1	0.134450	0.000154	0.2411	LIN #
07C1267	0.88 W	0.000118	0.000007	0.5459	LIN #	0.002164	0.000015	0.7243	LIN #	0.001696	0.000014	0.7608	LIN #	0.127764	0.000361	0.9708	LIN # 1	0.123340	0.000146	0.0621	LIN # 1
07C1268	0.97 W	0.000142	0.000005	0.5664	LIN #	0.001958	0.000010	0.8899	LIN #	0.001679	0.000011	0.9083	LIN # 1	0.122634	0.000145	0.9947	LIN # 1	0.122908	0.000114	0.4606	LIN # 1 10
07C1269	1.15 W	0.000159	0.000007	0.0875	LIN #	0.001828	0.000007	0.8889	LIN #	0.001658	0.000009	0.7434	LIN #	0.120235	0.000183	0.9906	LIN # 1	0.124937	0.000259	0.3384	LIN #
07C1270	1.18 W	0.000143	0.000006	0.1996	LIN #	0.001313	0.000013	0.2607	LIN #	0.001234	0.000012	0.4573	LIN #	0.088372	0.000179	0.9836	LIN # 1	0.100852	0.000053	0.9432	LIN #
07C1273	1.24 W	0.000168	0.000004	0.1126	LIN #	0.001982	0.000014	0.7566	LIN #	0.001733	0.000017	0.6866	LIN #	0.116945	0.000129	0.9927	LIN #	0.123116	0.000127	0.9077	LIN # 1
07C1274	1.33 W	0.000172	0.000008	0.0769	LIN #	0.001752	0.000011	0.7070	LIN #	0.001423	0.000023	0.1539	LIN #	0.096222	0.000323	0.9246	LIN #	0.112400	0.000167	0.7290	LIN #
07C1276	1.50 W	0.000158	0.000006	0.0364	LIN #	0.001253	0.000008	0.8226	LIN #	0.001006	0.000010	0.5080	LIN #	0.066632	0.000123	0.9795	LIN #	0.089821	0.000144	0.0965	LIN #
07C1277	1.77 W	0.000186	0.000004	0.0481	LIN #	0.001091	0.000007	0.7055	LIN #	0.000831	0.000006	0.6338	LIN #	0.054683	0.000112	0.9834	LIN # 1	0.089722	0.000119	0.5847	LIN # 1 10
07C1278	2.06 W	0.000243	0.000005	0.0021	LIN #	0.001391	0.000011	0.6879	LIN #	0.000971	0.000013	0.3797	LIN #	0.060302	0.000198	0.9558	LIN # 1	0.108286	0.000066	0.9432	LIN # 1 4
07C1280	2.42 W	0.000270	0.000006	0.0172	LIN # 1	0.001395	0.000011	0.4939	LIN #	0.000929	0.000004	0.6775	LIN #	0.057135	0.000114	0.9854	LIN # 1 9	0.113472	0.000119	0.9122	LIN # 1 6
07C1281	2.83 W	0.000406	0.000009	0.4196	LIN # 1	0.001122	0.000009	0.6788	LIN #	0.000716	0.000013	0.1352	LIN #	0.040793	0.000052	0.9882	LIN # 1	0.141210	0.000195	0.9437	LIN # 1 2
07C1282	3.45 W	0.000671	0.000007	0.4921	LIN # 1	0.001472	0.000007	0.5271	LIN #	0.000907	0.000013	0.0214	LIN #	0.049836	0.000103	0.9790	LIN # 1 2	0.225779	0.000244	0.9786	LIN # 1
07C1283	4.04 W	0.001104	0.000014	0.8536	LIN # 1	0.001565	0.000013	0.4885	LIN #	0.001035	0.000011	0.5939	LIN # 1	0.048861	0.000170	0.8610	LIN # 10	0.342566	0.000167	0.9980	LIN # 1 2 9 10
07C1285	4.72 W	0.001147	0.000012	0.5869	LIN # 1	0.001602	0.000016	0.6508	LIN #	0.000901	0.000011	0.0466	LIN #	0.041990	0.000104	0.9541	LIN # 1	0.363892	0.000344	0.9919	LIN # 1

Institute of Geophysics and Planetary Physics
Scripps Institution of Oceanography, La Jolla, USA

Sample Parameters	Sample	Material	Location	Analyst	Temp	Standard (in Ma)	%1σ	J	%1σ	MDF	%1σ	Volume Ratio	Sensitivity (mol/volt)	Day	Month	Year	Hour	Min	Resist	Irradiation	Project	Experiment	Nmb	Standard Name	
07C1245	0.00 W	TIS-1 3E8-06	Groundmass 125-300μm	Tisa, Samoa	Anthony Koppers	0	28.03	0.01	0.0016784	0.28	1.00378	0.16	1.0147	1.012E-19	28	MAR	2007	07	45	001	OSU3E06	Samoa	07C1245	01	FCT-3
07C1246	0.01 W	TIS-1 3E8-06	Groundmass 125-300μm	Tisa, Samoa	Anthony Koppers	0.01	28.03	0.01	0.0016784	0.28	1.00378	0.16	1.0147	1.012E-19	28	MAR	2007	08	14	001	OSU3E06	Samoa	07C1245	01	FCT-3
07C1248	0.03 W	TIS-1 3E8-06	Groundmass 125-300μm	Tisa, Samoa	Anthony Koppers	0.03	28.03	0.01	0.0016784	0.28	1.00378	0.16	1.0152	1.012E-19	28	MAR	2007	09	10	001	OSU3E06	Samoa	07C1245	01	FCT-3
07C1249	0.06 W	TIS-1 3E8-06	Groundmass 125-300μm	Tisa, Samoa	Anthony Koppers	0.06	28.03	0.01	0.0016784	0.28	1.00378	0.16	1.0153	1.012E-19	28	MAR	2007	09	38	001	OSU3E06	Samoa	07C1245	01	FCT-3
07C1250	0.09 W	TIS-1 3E8-06	Groundmass 125-300μm	Tisa, Samoa	Anthony Koppers	0.09	28.03	0.01	0.0016784	0.28	1.00378	0.16	1.0154	1.012E-19	28	MAR	2007	10	08	001	OSU3E06	Samoa	07C1245	01	FCT-3
07C1252	0.18 W	TIS-1 3E8-06	Groundmass 125-300μm	Tisa, Samoa	Anthony Koppers	0.18	28.03	0.01	0.0016784	0.28	1.00378	0.16	1.0158	1.012E-19	28	MAR	2007	11	05	001	OSU3E06	Samoa	07C1245	01	FCT-3
07C1253	0.24 W	TIS-1 3E8-06	Groundmass 125-300μm	Tisa, Samoa	Anthony Koppers	0.24	28.03	0.01	0.0016784	0.28	1.00378	0.16	1.0159	1.012E-19	28	MAR	2007	11	35	001	OSU3E06	Samoa	07C1245	01	FCT-3
07C1254	0.27 W	TIS-1 3E8-06	Groundmass 125-300μm	Tisa, Samoa	Anthony Koppers	0.27	28.03	0.01	0.0016784	0.28	1.00378	0.16	1.016	1.012E-19	28	MAR	2007	12	02	001	OSU3E06	Samoa	07C1245	01	FCT-3
07C1255	0.35 W	TIS-1 3E8-06	Groundmass 125-300μm	Tisa, Samoa	Anthony Koppers	0.35	28.03	0.01	0.0016784	0.28	1.00378	0.16	1.0159	1.012E-19	28	MAR	2007	12	29	001	OSU3E06	Samoa	07C1245	01	FCT-3
07C1257	0.41 W	TIS-1 3E8-06	Groundmass 125-300μm	Tisa, Samoa	Anthony Koppers	0.41	28.03	0.01	0.0016784	0.28	1.00378	0.16	1.0161	1.012E-19	28	MAR	2007	13	24	001	OSU3E06	Samoa	07C1245	01	FCT-3
07C1258	0.48 W	TIS-1 3E8-06	Groundmass 125-300μm	Tisa, Samoa	Anthony Koppers	0.48	28.03	0.01	0.0016784	0.28	1.00378	0.16	1.0161	1.012E-19	28	MAR	2007	13	52	001	OSU3E06	Samoa	07C1245	01	FCT-3
07C1259	0.53 W	TIS-1 3E8-06	Groundmass 125-300μm	Tisa, Samoa	Anthony Koppers	0.53	28.03	0.01	0.0016784	0.28	1.00378	0.16	1.0161	1.012E-19	28	MAR	2007	14	22	001	OSU3E06	Samoa	07C1245	01	FCT-3
07C1260	0.62 W	TIS-1 3E8-06	Groundmass 125-300μm	Tisa, Samoa	Anthony Koppers	0.62	28.03	0.01	0.0016784	0.28	1.00378	0.16	1.0162	1.012E-19	28	MAR	2007	14	50	001	OSU3E06	Samoa	07C1245	01	FCT-3
07C1262	0.63 W	TIS-1 3E8-06	Groundmass 125-300μm	Tisa, Samoa	Anthony Koppers	0.63	28.03	0.01	0.0016784	0.28	1.00378	0.16	1.0161	1.012E-19	28	MAR	2007	15	46	001	OSU3E06	Samoa	07C1245	01	FCT-3
07C1263	0.71 W	TIS-1 3E8-06	Groundmass 125-300μm	Tisa, Samoa	Anthony Koppers	0.71	28.03	0.01	0.0016784	0.28	1.00378	0.16	1.0161	1.012E-19	28	MAR	2007	16	12	001	OSU3E06	Samoa	07C1245	01	FCT-3
07C1264	0.74 W	TIS-1 3E8-06	Groundmass 125-300μm	Tisa, Samoa	Anthony Koppers	0.74	28.03	0.01	0.0016784	0.28	1.00378	0.16	1.0161	1.012E-19	28	MAR	2007	16	39	001	OSU3E06	Samoa	07C1245	01	FCT-3
07C1265	0.88 W	TIS-1 3E8-06	Groundmass 125-300μm	Tisa, Samoa	Anthony Koppers	0.88	28.03	0.01	0.0016784	0.28	1.00378	0.16	1.0162	1.012E-19	28	MAR	2007	17	05	001	OSU3E06	Samoa	07C1245	01	FCT-3
07C1267	0.88 W	TIS-1 3E8-06	Groundmass 125-300μm	Tisa, Samoa	Anthony Koppers	0.88	28.03	0.01	0.0016784	0.28	1.00378	0.16	1.0162	1.012E-19	28	MAR	2007	17	57	001	OSU3E06	Samoa	07C1245	01	FCT-3
07C1268	0.97 W	TIS-1 3E8-06	Groundmass 125-300μm	Tisa, Samoa	Anthony Koppers	0.97	28.03	0.01	0.0016784	0.28	1.00378	0.16	1.0159	1.012E-19	28	MAR	2007	18	23	001	OSU3E06	Samoa	07C1245	01	FCT-3
07C1269	1.15 W	TIS-1 3E8-06	Groundmass 125-300μm	Tisa, Samoa	Anthony Koppers	1.15	28.03	0.01	0.0016784	0.28	1.00378	0.16	1.0158	1.012E-19	28	MAR	2007	18	50	001	OSU3E06	Samoa	07C1245	01	FCT-3
07C1270	1.18 W	TIS-1 3E8-06	Groundmass 125-300μm	Tisa, Samoa	Anthony Koppers	1.18	28.03	0.01	0.0016784	0.28	1.00378	0.16	1.0155	1.012E-19	28	MAR	2007	19	16	001	OSU3E06	Samoa	07C1245	01	FCT-3
07C1273	1.24 W	TIS-1 3E8-06	Groundmass 125-300μm	Tisa, Samoa	Anthony Koppers	1.24	28.03	0.01	0.0016784	0.28	1.00378	0.16	1.0142	1.012E-19	29	MAR	2007	07	32	001	OSU3E06	Samoa	07C1245	01	FCT-3
07C1274	1.33 W	TIS-1 3E8-06	Groundmass 125-300μm	Tisa, Samoa	Anthony Koppers	1.33	28.03	0.01	0.0016784	0.28	1.00378	0.16	1.0144	1.012E-19	29	MAR	2007	08	00	001	OSU3E06	Samoa	07C1245	01	FCT-3
07C1276	1.50 W	TIS-1 3E8-06	Groundmass 125-300μm	Tisa, Samoa	Anthony Koppers	1.5	28.03	0.01	0.0016784	0.28	1.00378	0.16	1.0146	1.012E-19	29	MAR	2007	08	56	001	OSU3E06	Samoa	07C1245	01	FCT-3
07C1277	1.77 W	TIS-1 3E8-06	Groundmass 125-300μm	Tisa, Samoa	Anthony Koppers	1.77	28.03	0.01	0.0016784	0.28	1.00378	0.16	1.0145	1.012E-19	29	MAR	2007	09	25	001	OSU3E06	Samoa	07C1245	01	FCT-3
07C1278	2.06 W	TIS-1 3E8-06	Groundmass 125-300μm	Tisa, Samoa	Anthony Koppers	2.06	28.03	0.01	0.0016784	0.28	1.00378	0.16	1.0146	1.012E-19	29	MAR	2007	09	52	001	OSU3E06	Samoa	07C1245	01	FCT-3
07C1280	2.42 W	TIS-1 3E8-06	Groundmass 125-300μm	Tisa, Samoa	Anthony Koppers	2.42	28.03	0.01	0.0016784	0.28	1.00378	0.16	1.0149	1.012E-19	29	MAR	2007	10	49	001	OSU3E06	Samoa	07C1245	01	FCT-3
07C1281	2.83 W	TIS-1 3E8-06	Groundmass 125-300μm	Tisa, Samoa	Anthony Koppers	2.83	28.03	0.01	0.0016784	0.28	1.00378	0.16	1.015	1.012E-19	29	MAR	2007	11	16	001	OSU3E06	Samoa	07C1245	01	FCT-3
07C1282	3.45 W	TIS-1 3E8-06	Groundmass 125-300μm	Tisa, Samoa	Anthony Koppers	3.45	28.03	0.01	0.0016784	0.28	1.00378	0.16	1.0152	1.012E-19	29	MAR	2007	11	44	001	OSU3E06	Samoa	07C1245	01	FCT-3
07C1283	4.04 W	TIS-1 3E8-06	Groundmass 125-300μm	Tisa, Samoa	Anthony Koppers	4.04	28.03	0.01	0.0016784	0.28	1.00378	0.16	1.0154	1.012E-19	29	MAR	2007	12	12	001	OSU3E06	Samoa	07C1245	01	FCT-3
07C1285	4.72 W	TIS-1 3E8-06	Groundmass 125-300μm	Tisa, Samoa	Anthony Koppers	4.72	28.03	0.01	0.0016784	0.28	1.00378	0.16	1.0151	1.012E-19	29	MAR	2007	13	07	001	OSU3E06	Samoa	07C1245	01	FCT-3

Irradiation Constants	40/36(a)		40/36(c)		38/36(a)		38/36(c)		39/37(ca)		38/37(ca)		36/37(ca)		40/39(k)		38/39(k)		36/38(cl)		K/Ca		K/Cl		Ca/Cl		
		%1σ		%1σ		%1σ		%1σ		%1σ		%1σ		%1σ		%1σ		%1σ		%1σ		%1σ		%1σ		%1σ	
07C1245	0.00 W	295.5	0	0.018	35	0.1869	0	1.493	3	0.000709	1.83	0.000032	21.9	0.000269	0.37	0.00165	24.9	0.01211	0.1	0	0	0.43	2	0	0	0	0
07C1246	0.01 W	295.5	0	0.018	35	0.1869	0	1.493	3	0.000709	1.83	0.000032	21.9	0.000269	0.37	0.00165	24.9	0.01211	0.1	0	0	0.43	2	0	0	0	0
07C1248	0.03 W	295.5	0	0.018	35	0.1869	0	1.493	3	0.000709	1.83	0.000032	21.9	0.000269	0.37	0.00165	24.9	0.01211	0.1	0	0	0.43	2	0	0	0	0
07C1249	0.06 W	295.5	0	0.018	35	0.1869	0	1.493	3	0.000709	1.83	0.000032	21.9	0.000269	0.37	0.00165	24.9	0.01211	0.1	0	0	0.43	2	0	0	0	0
07C1250	0.09 W	295.5	0	0.018	35	0.1869	0	1.493	3	0.000709	1.83	0.000032	21.9	0.000269	0.37	0.00165	24.9	0.01211	0.1	0	0	0.43	2	0	0	0	0
07C1252	0.18 W	295.5	0	0.018	35	0.1869	0	1.493	3	0.000709	1.83	0.000032	21.9	0.000269	0.37	0.00165	24.9	0.01211	0.1	0	0	0.43	2	0	0	0	0
07C1253	0.24 W	295.5	0	0.018	35	0.1869	0	1.493	3	0.000709	1.83	0.000032	21.9	0.000269	0.37	0.00165	24.9	0.01211	0.1	0	0	0.43	2	0	0	0	0
07C1254	0.27 W	295.5	0	0.018	35	0.1869	0	1.493	3	0.000709	1.83	0.000032	21.9	0.000269	0.37	0.00165	24.9	0.01211	0.1	0	0	0.43	2	0	0	0	0
07C1255	0.35 W	295.5	0	0.018	35	0.1869	0	1.493	3	0.000709	1.83	0.000032	21.9	0.000269	0.37	0.00165	24.9	0.01211	0.1	0	0	0.43	2	0	0	0	0
07C1257	0.41 W	295.5	0	0.018	35	0.1869	0	1.493	3	0.000709	1.83	0.000032	21.9	0.000269	0.37	0.00165	24.9	0.01211	0.1	0	0	0.43	2	0	0	0	0
07C1258	0.48 W	295.5	0	0.018	35	0.1869	0	1.493	3	0.000709	1.83	0.000032	21.9	0.000269	0.37	0.00165	24.9	0.01211	0.1	0	0	0.43	2	0	0	0	0
07C1259	0.53 W	295.5	0	0.018	35	0.1869	0	1.493	3	0.000709	1.83	0.000032	21.9	0.000269	0.37	0.00165	24.9	0.01211	0.1	0	0	0.43	2	0	0	0	0
07C1260	0.62 W	295.5	0	0.018	35	0.1869	0	1.493	3	0.000709	1.83	0.000032	21.9	0.000269	0.37	0.00165	24.9	0.01211	0.1	0	0	0.43	2	0	0	0	0
07C1262	0.63 W	295.5	0	0.018	35	0.1869	0	1.493	3	0.000709	1.83	0.000032	21.9	0.000269	0.37	0.00165	24.9	0.01211	0.1	0	0	0.43	2	0	0	0	0
07C1263	0.71 W	295.5	0	0.018	35	0.1869	0	1.493	3	0.000709	1.83	0.000032	21.9	0.000269	0.37	0.00165	24.9	0.01211	0.1	0	0	0.43	2	0	0	0	0
07C1264	0.74 W	295.5	0	0.018	35	0.1869	0	1.493	3	0.000709	1.83	0.000032	21.9	0.000269	0.37	0.00165	24.9	0.01211	0.1	0	0	0.43	2	0	0	0	0
07C1265	0.88 W	295.5	0	0.018	35	0.1869	0	1.493	3	0.000709	1.83	0.000032	21.9	0.000269	0.37	0.00165	24.9	0.01211	0.1	0	0	0.43	2	0	0	0	0
07C1267	0.88 W	295.5	0	0.018	35	0.1869	0	1.493	3	0.000709	1.83	0.000032	21.9	0.000269	0.37	0.00165	24.9	0.01211	0.1	0	0	0.43	2	0	0	0	0
07C1268	0.97 W	295.5	0	0.018	35	0.1869	0	1.493	3	0.000709	1.83	0.000032	21.9	0.000269	0.37	0.00165	24.9	0.01211	0.1	0	0	0.43	2	0	0	0	0
07C1269	1.15 W	295.5	0	0.018	35	0.1869	0	1.493	3	0.000709	1.83	0.000032	21.9	0.000269	0.37	0.00165	24.9	0.01211	0.1	0	0	0.43	2	0	0	0	0
07C1270	1.18 W	295.5	0	0.018	35	0.1869	0	1.493	3	0.000709	1.83	0.000032	21.9	0.000269	0.37	0.00165	24.9	0.01211	0.1	0	0	0.43	2	0	0	0	0
07C1273	1.24 W	295.5	0	0.018	35	0.1869	0	1.493	3	0.000709	1.83	0.000032	21.9	0.000269	0.37	0.00165	24.9	0.01211	0.1	0	0	0.43	2	0	0	0	0
07C1274	1.33 W	295.5	0	0.018	35	0.1869	0	1.493	3	0.000709	1.83	0.000032	21.9	0.000269	0.37	0.00165	24.9	0.01211	0.1	0	0	0.43	2	0	0	0	0
07C1276	1.50 W	295.5	0	0.018	35	0.1869	0	1.493	3	0.000709	1.83	0.000032	21.9	0.000269	0.37	0.00165	24.9	0.01211	0.1	0	0	0.43	2	0	0	0	0
07C1277	1.77 W	295.5	0	0.018	35	0.1869	0	1.493	3	0.000709	1.83	0.000032	21.9	0.000269	0.37	0.00165	24.9	0.01211	0.1	0	0	0.43	2	0	0	0	0
07C1278	2.06 W	295.5	0	0.018	35	0.1869	0	1.493	3	0.000709	1.83	0.000032	21.9	0.000269	0.37	0.00165	24.9	0.01211	0.1	0	0	0.43	2	0	0	0	0
07C1280	2.42 W	295.5	0	0.018	35	0.1869	0	1.493	3	0.000709	1.83	0.000032	21.9	0.000269	0.37	0.00165	24.9	0.01211	0.1	0	0	0.43	2	0	0	0	0
07C1281	2.83 W	295.5	0	0.018	35	0.1869	0	1.493	3	0.000709	1.83	0.000032	21.9	0.000269	0.37	0.00165	24.9	0.01211	0.1	0	0	0.43	2	0	0	0	0
07C1282	3.45 W	295.5	0	0.018	35	0.1869	0	1.493	3	0.000709	1.83	0.000032	21.9	0.000269	0.37	0.00165	24.9	0.01211	0.1	0	0	0.43	2	0	0	0	0
07C1283	4.04 W	295.5	0	0.018	35	0.1869	0	1.493	3	0.000709	1.83	0.000032	21.9	0.000269	0.37	0.00165	24.9	0.01211	0.1	0	0	0.43	2	0	0	0	0
07C1285	4.72 W	295.5	0	0.018	35	0.1869	0	1.493	3	0.000709	1.83	0.000032	21.9	0.000269	0.37	0.00165	24.9	0.01211	0.1	0	0	0.43	2	0	0	0	0

07C1245.AGE >>> TIS-1 3E8-06 >>> SAMOA PROJECT



Ar-Ages in Ma

WEIGHTED PLATEAU

2.18 ± 0.03

TOTAL FUSION

2.23 ± 0.05

NORMAL ISOCHRON

2.15 ± 0.04

INVERSE ISOCHRON

2.17 ± 0.04

MSWD (PROBABILITY)

0.93 (56%)

Sample Info

Groundmass 125-300µm

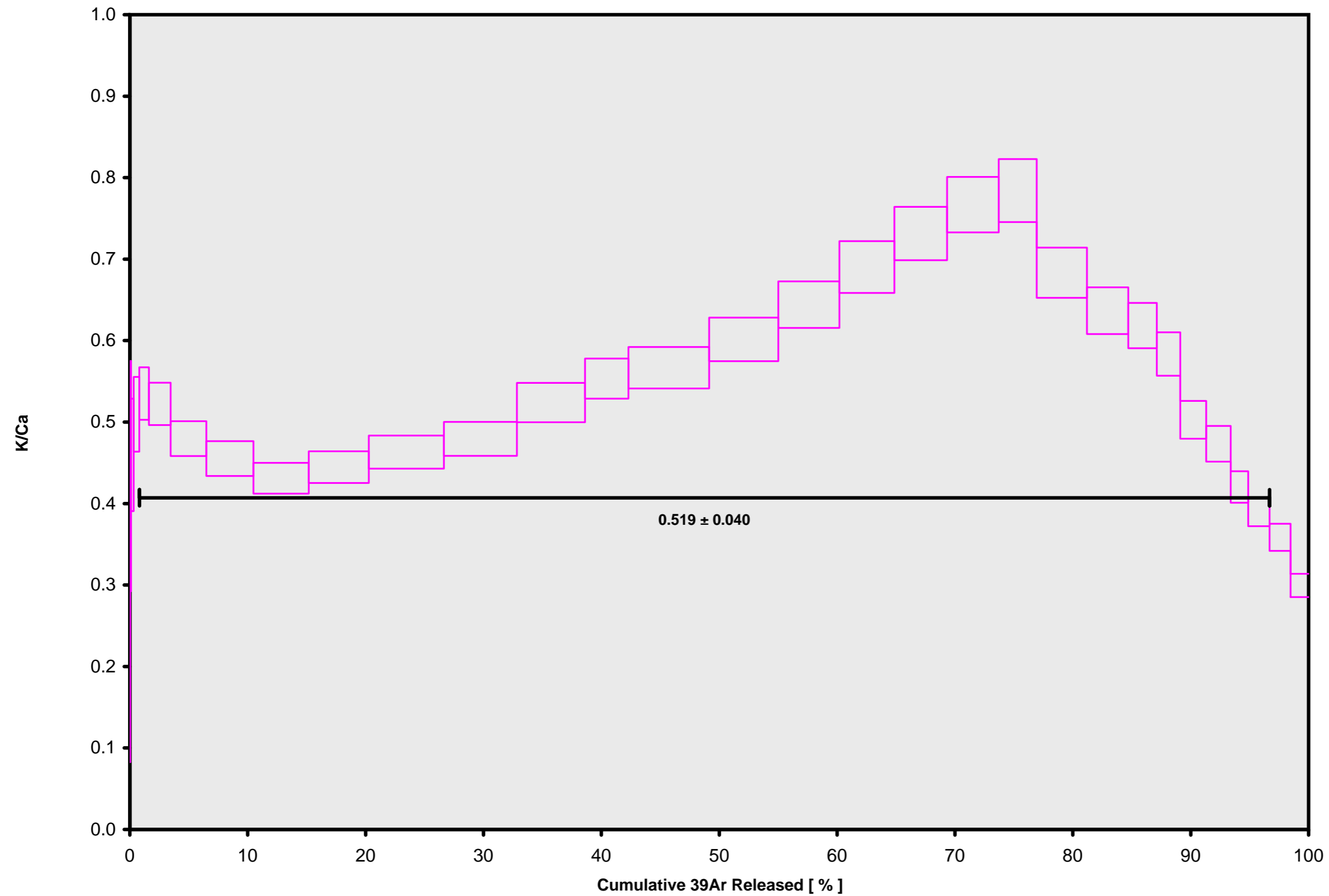
Tisa, Samoa

Anthony Koppers

IRR = OSU3E06

J = 0.00167840 ± 0.00000470

07C1245.AGE >>> TIS-1 3E8-06 >>> SAMOA PROJECT



Ar-Ages in Ma

WEIGHTED PLATEAU

2.18 ± 0.03

TOTAL FUSION

2.23 ± 0.05

NORMAL ISOCHRON

2.15 ± 0.04

INVERSE ISOCHRON

2.17 ± 0.04

Sample Info

Groundmass 125-300µm

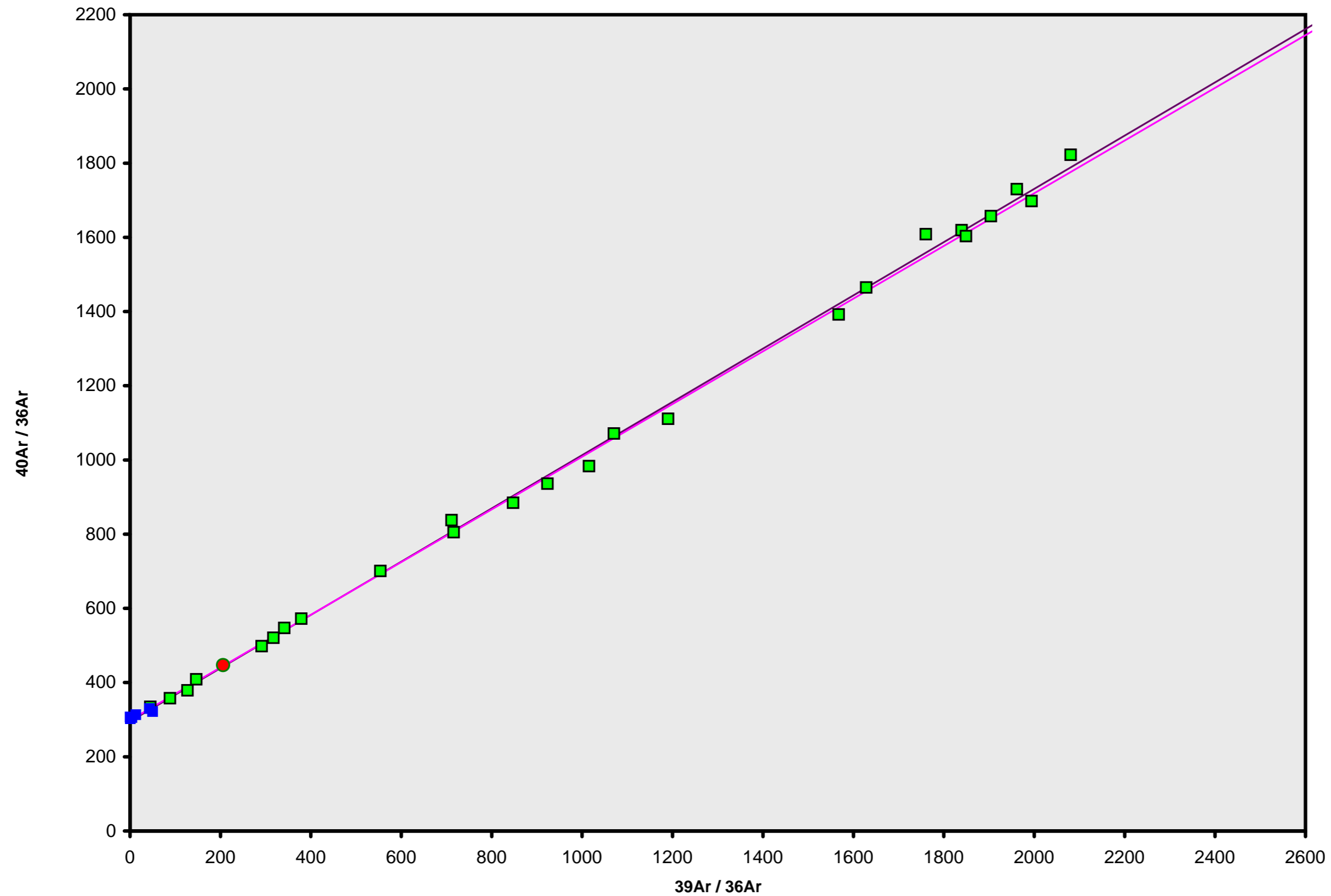
Tisa, Samoa

Anthony Koppers

IRR = OSU3E06

J = 0.00167840 ± 0.00000470

07C1245.AGE >>> TIS-1 3E8-06 >>> SAMOA PROJECT



Ar-Ages in Ma

WEIGHTED PLATEAU

2.18 ± 0.03

TOTAL FUSION

2.23 ± 0.05

NORMAL ISOCHRON

2.15 ± 0.04

INVERSE ISOCHRON

2.17 ± 0.04

MSWD (PROBABILITY)

0.92 (57%)

40AR/36AR INTERCEPT

298.4 ± 7.1

Sample Info

Groundmass 125-300µm

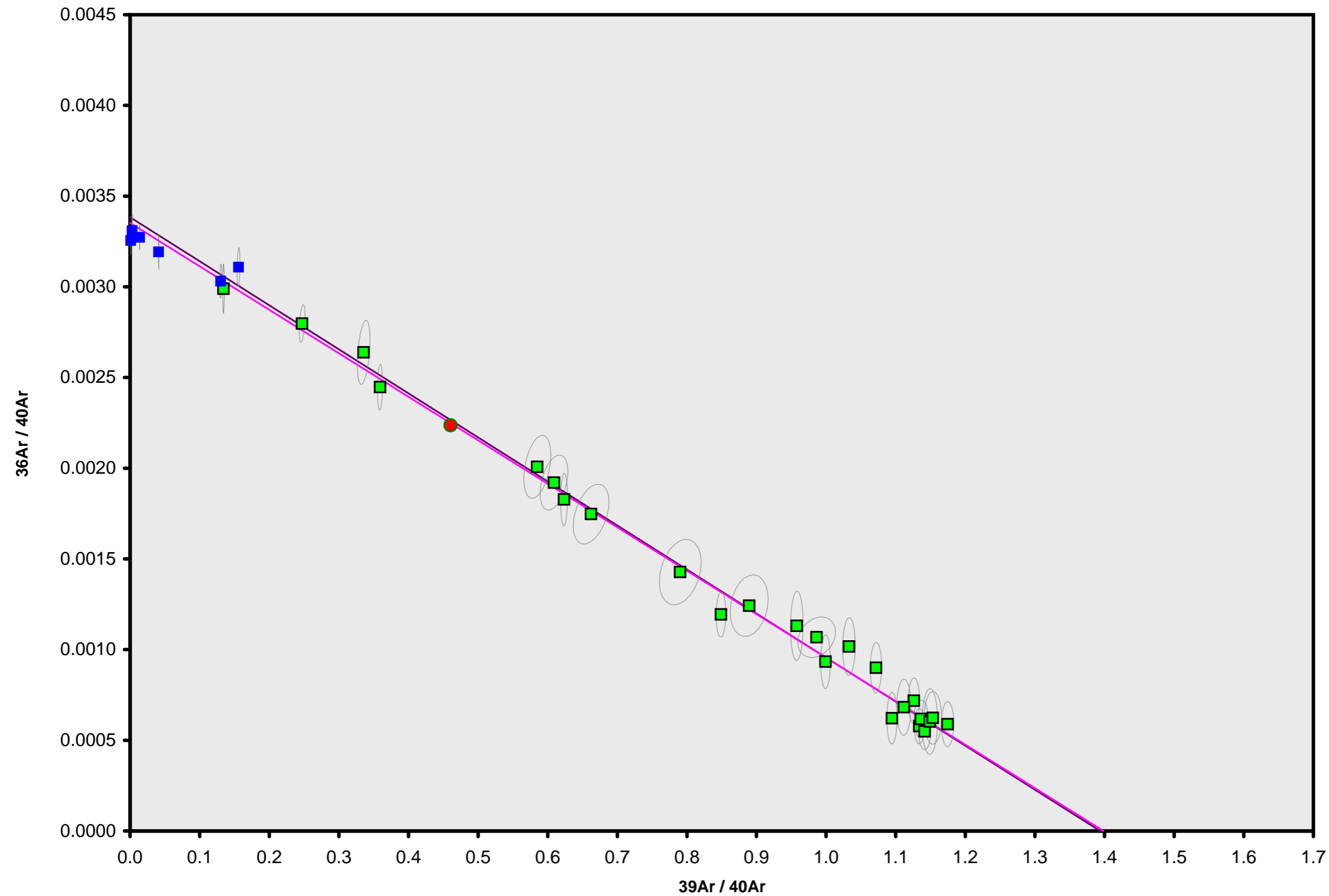
Tisa, Samoa

Anthony Koppers

IRR = OSU3E06

J = 0.00167840 ± 0.00000470

07C1245.AGE >>> TIS-1 3E8-06 >>> SAMOA PROJECT



Ar-Ages in Ma

WEIGHTED PLATEAU

2.18 ± 0.03

TOTAL FUSION

2.23 ± 0.05

NORMAL ISOCHRON

2.15 ± 0.04

INVERSE ISOCHRON

2.17 ± 0.04

MSWD (PROBABILITY)

0.94 (54%)

SPREADING FACTOR

74.4%

40AR/36AR INTERCEPT

298.2 ± 7.1

Sample Info

Groundmass 125-300 μm

Tisa, Samoa

Anthony Koppers

IRR = OSU3E06

J = $0.00167840 \pm 0.00000470$