

Incremental Heating		36Ar(a)	37Ar(ca)	38Ar(cl)	39Ar(k)	40Ar(r)	Age ± 2σ (Ma)	40Ar(r) (%)	39Ar(k) (%)	K/Ca ± 2σ
07C1998	0.00 W	0.003320	0.000432	0.000018	0.000195	0.024163	318.57 ± 221.39	2.40	0.02	0.194 ± 0.237
07C1999	0.01 W	0.002533	0.000732	0.000018	0.000383	0.005434	39.53 ± 86.66	0.72	0.04	0.225 ± 0.164
07C2000	0.02 W	0.001555	0.001310	0.000000	0.000720	0.002558	9.97 ± 39.31	0.55	0.07	0.236 ± 0.106
07C2002	0.06 W	0.000856	0.001766	0.000008	0.001079	0.004410	11.47 ± 19.99	1.71	0.11	0.263 ± 0.084
07C2003	0.12 W	0.000601	0.002449	0.000000	0.001505	0.001820	3.40 ± 12.42	1.01	0.15	0.264 ± 0.061
07C2004	0.15 W	0.000426	0.004597	0.000004	0.002569	0.009711	10.61 ± 5.81	7.15	0.26	0.240 ± 0.033
07C2006	0.18 W	0.000281	0.008197	0.000000	0.004055	0.013027	9.02 ± 4.04	13.56	0.41	0.213 ± 0.019
07C2007	0.27 W	0.000221	0.017101	0.000001	0.007782	0.026967	9.73 ± 2.14	29.18	0.78	0.196 ± 0.011
07C2008	0.32 W	0.000142	0.024461	0.000000	0.010615	0.038280	10.13 ± 1.40	47.63	1.06	0.187 ± 0.010
07C2009	0.44 W	0.000087	0.037898	0.000000	0.015332	0.062703	11.48 ± 0.94	70.81	1.53	0.174 ± 0.008
07C2012	0.53 W	0.000124	0.077480	0.000008	0.031124	0.131008	11.81 ± 0.33	78.05	3.11	0.173 ± 0.008
07C2013	0.62 W	0.000056	0.083733	0.000000	0.032201	0.147152	12.82 ± 0.36	89.83	3.22	0.165 ± 0.008
07C2015	0.71 W ✓	0.000046	0.103710	0.000000	0.042762	0.203829	13.37 ± 0.24	93.74	4.27	0.177 ± 0.008
07C2016	0.88 W ✓	0.000056	0.114695	0.000000	0.052713	0.250596	13.34 ± 0.20	93.79	5.27	0.198 ± 0.010
07C2017	1.06 W ✓	0.000059	0.109317	0.000000	0.055602	0.262980	13.27 ± 0.28	93.72	5.56	0.219 ± 0.010
07C2019	1.15 W ✓	0.000061	0.100180	0.000000	0.057929	0.272353	13.19 ± 0.24	93.76	5.79	0.249 ± 0.011
07C2020	1.27 W ✓	0.000084	0.110773	0.000000	0.071305	0.330943	13.02 ± 0.16	93.00	7.13	0.277 ± 0.012
07C2021	1.44 W ✓	0.000086	0.089811	0.000000	0.065521	0.303098	12.98 ± 0.17	92.25	6.55	0.314 ± 0.014
07C2022	1.59 W	0.000096	0.082646	0.000000	0.064237	0.295227	12.89 ± 0.22	91.18	6.42	0.334 ± 0.015
07C2024	1.77 W	0.000246	0.208471	0.000000	0.139100	0.632081	12.75 ± 0.10	89.67	13.91	0.287 ± 0.012
07C2025	2.00 W	0.000211	0.174691	0.000000	0.089750	0.404797	12.66 ± 0.15	86.64	8.97	0.221 ± 0.009
07C2026	2.39 W	0.000244	0.225230	0.000000	0.079180	0.355513	12.60 ± 0.18	83.13	7.92	0.151 ± 0.007
07C2027	2.83 W	0.000301	0.305499	0.000008	0.073052	0.329874	12.67 ± 0.20	78.72	7.30	0.103 ± 0.004
07C2029	3.30 W	0.000342	0.288838	0.000003	0.055135	0.242666	12.35 ± 0.27	70.60	5.51	0.082 ± 0.004
07C2030	4.04 W	0.000494	0.227739	0.000016	0.032226	0.145148	12.64 ± 0.44	49.86	3.22	0.061 ± 0.003
07C2031	4.86 W	0.000850	0.157843	0.000007	0.014283	0.064100	12.59 ± 1.35	20.33	1.43	0.039 ± 0.002
Σ		0.013379	2.559600	0.000090	1.000356	4.560438				

Information on Analysis	Results	40(r)/39(k) ± 2σ	Age ± 2σ (Ma)	MSWD	39Ar(k) (% ,n)	K/Ca ± 2σ
Sample = FAV-2 4D8-06	Age Plateau	4.6879 ± 0.0503	13.15 ± 0.16	2.83	34.57	0.223 ± 0.039
Material = Groundmass 210-300μm	Error Mean	± 1.07%	± 1.19%	1%	6	
Location = Fa'avevesi, Samoa		Minimal External Error ± 0.28		1.63	2σ Confidence Limit	
Analyst = Jamie Russell		Analytical Error ± 0.14		1.6818	Error Magnification	
Project = SAMOA						
Mass Discrimination Law = LIN	Total Fusion Age	4.5588 ± 0.0346	12.79 ± 0.12		26	0.168 ± 0.007
Irradiation = OSU4D06		± 0.76%	± 0.92%			
J = 0.00155710 ± 0.00000405		Minimal External Error ± 0.25				
FCT-3 = 28.030 ± 0.003 Ma		Analytical Error ± 0.10				

Normal Isochron		39(k)/36(a) ± 2σ	40(a+r)/36(a) ± 2σ	r.i.
07C1998	0.00 W	0.1 ± 0.0	302.8 ± 5.5	0.1103
07C1999	0.01 W	0.2 ± 0.0	297.6 ± 4.8	0.1529
07C2000	0.02 W	0.5 ± 0.0	297.1 ± 6.5	0.3876
07C2002	0.06 W	1.3 ± 0.1	300.7 ± 9.2	0.6663
07C2003	0.12 W	2.5 ± 0.1	298.5 ± 11.2	0.8299
07C2004	0.15 W	6.0 ± 0.3	318.3 ± 13.4	0.9248
07C2006	0.18 W	14.4 ± 1.0	341.9 ± 24.1	0.9851
07C2007	0.27 W	35.1 ± 3.2	417.3 ± 37.8	0.9937
07C2008	0.32 W	74.6 ± 9.3	564.4 ± 70.6	0.9961
07C2009	0.44 W	175.4 ± 34.9	1012.9 ± 201.5	0.9994
07C2012	0.53 W	250.0 ± 23.4	1347.9 ± 126.2	0.9959
07C2013	0.62 W	573.0 ± 135.8	2914.0 ± 691.0	0.9993
07C2015	0.71 W ✓	933.6 ± 233.6	4745.5 ± 1187.5	0.9996
07C2016	0.88 W ✓	944.5 ± 191.6	4785.4 ± 970.8	0.9996
07C2017	1.06 W ✓	937.0 ± 282.2	4727.1 ± 1423.6	0.9997
07C2019	1.15 W ✓	950.0 ± 252.7	4761.8 ± 1266.5	0.9998
07C2020	1.27 W ✓	849.8 ± 128.6	4239.5 ± 641.7	0.9994
07C2021	1.44 W ✓	763.6 ± 111.2	3828.0 ± 557.5	0.9993
07C2022	1.59 W	667.2 ± 111.3	3362.0 ± 560.9	0.9993
07C2024	1.77 W	566.5 ± 32.2	2869.9 ± 162.9	0.9974
07C2025	2.00 W	425.7 ± 29.2	2215.7 ± 151.6	0.9976
07C2026	2.39 W	324.8 ± 21.2	1753.9 ± 114.6	0.9968
07C2027	2.83 W	242.4 ± 13.4	1389.9 ± 77.0	0.9953
07C2029	3.30 W	161.4 ± 8.1	1005.7 ± 50.5	0.9948
07C2030	4.04 W	65.3 ± 2.2	589.5 ± 20.1	0.9836
07C2031	4.86 W	16.8 ± 0.5	370.9 ± 10.1	0.9677

Results	40(a)/36(a) ± 2σ	40(r)/39(k) ± 2σ	Age ± 2σ (Ma)	MSWD
Normal Isochron No Convergence	269.8023 ± 273.6854 ± 101.44%	5.3431 ± 0.3165 ± 5.92%	14.98 ± 0.89 ± 5.92%	0.98 42%
			Minimal External Error ± 0.93 Analytical Error ± 0.88	
Statistics	2σ Confidence Limit Error Magnification Number of Data Points	2.41 1.0000 6	Convergence Number of Iterations Calculated Line	0.0007485380 100 Weighted York-2

Inverse Isochron		39(k)/40(a+r) ± 2σ	36(a)/40(a+r) ± 2σ	r.i.
07C1998	0.00 W	0.000194 ± 0.000032	0.003303 ± 0.000060	0.0004
07C1999	0.01 W	0.000508 ± 0.000052	0.003360 ± 0.000054	0.0026
07C2000	0.02 W	0.001558 ± 0.000081	0.003365 ± 0.000074	0.0030
07C2002	0.06 W	0.004195 ± 0.000142	0.003326 ± 0.000101	0.0050
07C2003	0.12 W	0.008394 ± 0.000210	0.003350 ± 0.000126	0.0092
07C2004	0.15 W	0.018929 ± 0.000327	0.003142 ± 0.000133	0.0156
07C2006	0.18 W	0.042223 ± 0.000516	0.002925 ± 0.000206	0.0277
07C2007	0.27 W	0.084229 ± 0.000854	0.002396 ± 0.000217	0.0326
07C2008	0.32 W	0.132110 ± 0.001459	0.001772 ± 0.000222	0.0283
07C2009	0.44 W	0.173185 ± 0.001225	0.000987 ± 0.000196	0.0169
07C2012	0.53 W	0.185487 ± 0.001573	0.000742 ± 0.000069	0.0660
07C2013	0.62 W	0.196640 ± 0.001724	0.000343 ± 0.000081	0.0271
07C2015	0.71 W ✓	0.196732 ± 0.001438	0.000211 ± 0.000053	0.0172
07C2016	0.88 W ✓	0.197360 ± 0.001163	0.000209 ± 0.000042	0.0157
07C2017	1.06 W ✓	0.198214 ± 0.001488	0.000212 ± 0.000064	0.0114
07C2019	1.15 W ✓	0.199501 ± 0.001176	0.000210 ± 0.000056	0.0124
07C2020	1.27 W ✓	0.200441 ± 0.001050	0.000236 ± 0.000036	0.0158
07C2021	1.44 W ✓	0.199483 ± 0.001094	0.000261 ± 0.000038	0.0180
07C2022	1.59 W	0.198461 ± 0.001255	0.000297 ± 0.000050	0.0161
07C2024	1.77 W	0.197407 ± 0.000807	0.000348 ± 0.000020	0.0150
07C2025	2.00 W	0.192147 ± 0.000916	0.000451 ± 0.000031	0.0200
07C2026	2.39 W	0.185197 ± 0.000966	0.000570 ± 0.000037	0.0312
07C2027	2.83 W	0.174372 ± 0.000938	0.000719 ± 0.000040	0.0403
07C2029	3.30 W	0.160446 ± 0.000819	0.000994 ± 0.000050	0.0472
07C2030	4.04 W	0.110727 ± 0.000683	0.001696 ± 0.000058	0.0867
07C2031	4.86 W	0.045294 ± 0.000315	0.002696 ± 0.000073	0.0918

Results	40(a)/36(a) ± 2σ	40(r)/39(k) ± 2σ	Age ± 2σ (Ma)	MSWD
Inverse Isochron	525.0838 ± 779.8510	5.6315 ± 0.6208	15.79 ± 1.73	0.73
Clustered Data Points	± 148.52%	± 11.02%	± 10.99%	57%
		Minimal External Error ± 1.76		
		Analytical Error ± 1.73		
Statistics	2σ Confidence Limit	2.41	Convergence	0.0006855133
	Error Magnification	1.0000	Number of Iterations	6
	Number of Data Points	6	Calculated Line	Weighted York-2
	Spreading Factor	2.1%		

Relative Abundances		36Ar	%1σ	37Ar	%1σ	38Ar	%1σ	39Ar	%1σ	40Ar	%1σ	Age ± 2σ (Ma)	40Ar(r) (%)	39Ar(k) (%)	K/Ca ± 2σ
07C1998	0.00 W	0.0033202	0.910	0.0004321	60.472	0.0006413	1.693	0.0001956	8.171	1.0052457	0.055	318.57 ± 221.39	2.40	0.02	0.194 ± 0.237
07C1999	0.01 W	0.0025329	0.797	0.0007316	36.100	0.0004958	1.808	0.0003834	5.101	0.7538348	0.103	39.53 ± 86.66	0.72	0.04	0.225 ± 0.164
07C2000	0.02 W	0.0015556	1.096	0.0013103	22.223	0.0002967	3.620	0.0007211	2.592	0.4621426	0.093	9.97 ± 39.31	0.55	0.07	0.236 ± 0.106
07C2002	0.06 W	0.0008562	1.519	0.0017664	15.858	0.0001812	4.043	0.0010804	1.690	0.2572709	0.114	11.47 ± 19.99	1.71	0.11	0.263 ± 0.084
07C2003	0.12 W	0.0006012	1.866	0.0024489	11.266	0.0001269	6.947	0.0015068	1.242	0.1792950	0.147	3.40 ± 12.42	1.01	0.15	0.264 ± 0.061
07C2004	0.15 W	0.0004277	2.100	0.0045974	6.598	0.0001145	8.518	0.0025726	0.846	0.1357367	0.169	10.61 ± 5.81	7.15	0.26	0.240 ± 0.033
07C2006	0.18 W	0.0002831	3.484	0.0081967	3.847	0.0000997	8.887	0.0040607	0.559	0.0960420	0.244	9.02 ± 4.04	13.56	0.41	0.213 ± 0.019
07C2007	0.27 W	0.0002260	4.425	0.0171008	1.895	0.0001372	5.942	0.0077943	0.426	0.0924059	0.273	9.73 ± 2.14	29.18	0.78	0.196 ± 0.011
07C2008	0.32 W	0.0001490	5.971	0.0244613	1.846	0.0001518	4.882	0.0106326	0.454	0.0803690	0.312	10.13 ± 1.40	47.63	1.06	0.187 ± 0.010
07C2009	0.44 W	0.0000976	8.902	0.0378980	1.194	0.0001998	3.812	0.0153588	0.255	0.0885545	0.244	11.48 ± 0.94	70.81	1.53	0.174 ± 0.008
07C2012	0.53 W	0.0001453	3.994	0.0774805	0.939	0.0004102	2.147	0.0311785	0.220	0.1678454	0.362	11.81 ± 0.33	78.05	3.11	0.173 ± 0.008
07C2013	0.62 W	0.0000787	8.453	0.0837334	1.100	0.0004014	2.256	0.0322606	0.227	0.1638105	0.375	12.82 ± 0.36	89.83	3.22	0.165 ± 0.008
07C2015	0.71 W ✓	0.0000737	7.761	0.1037102	1.094	0.0005113	2.050	0.0428358	0.234	0.2174342	0.280	13.37 ± 0.24	93.74	4.27	0.177 ± 0.008
07C2016	0.88 W ✓	0.0000867	6.511	0.1146955	1.392	0.0006261	1.607	0.0527940	0.199	0.2671757	0.217	13.34 ± 0.20	93.79	5.27	0.198 ± 0.010
07C2017	1.06 W ✓	0.0000887	10.061	0.1093165	1.003	0.0006656	2.028	0.0556796	0.276	0.2806067	0.253	13.27 ± 0.28	93.72	5.56	0.219 ± 0.010
07C2019	1.15 W ✓	0.0000879	9.216	0.1001799	0.910	0.0006916	1.639	0.0580004	0.196	0.2904674	0.220	13.19 ± 0.24	93.76	5.79	0.249 ± 0.011
07C2020	1.27 W ✓	0.0001137	5.577	0.1107733	0.909	0.0008663	1.076	0.0713833	0.193	0.3558565	0.177	13.02 ± 0.16	93.00	7.13	0.277 ± 0.012
07C2021	1.44 W ✓	0.0001100	5.675	0.0898105	0.997	0.0007783	1.629	0.0655846	0.198	0.3285613	0.189	12.98 ± 0.17	92.25	6.55	0.314 ± 0.014
07C2022	1.59 W	0.0001185	6.772	0.0826464	0.884	0.0007783	1.117	0.0642957	0.240	0.3237818	0.206	12.89 ± 0.22	91.18	6.42	0.334 ± 0.015
07C2024	1.77 W	0.0003016	2.303	0.2084714	0.814	0.0017236	0.630	0.1392478	0.182	0.7048648	0.093	12.75 ± 0.10	89.67	13.91	0.287 ± 0.012
07C2025	2.00 W	0.0002578	2.792	0.1746908	0.713	0.0011224	0.719	0.0898740	0.201	0.4672382	0.127	12.66 ± 0.15	86.64	8.97	0.221 ± 0.009
07C2026	2.39 W	0.0003044	2.606	0.2252298	0.836	0.0010034	1.285	0.0793400	0.203	0.4276759	0.163	12.60 ± 0.18	83.13	7.92	0.151 ± 0.007
07C2027	2.83 W	0.0003836	2.165	0.3054987	0.818	0.0009585	1.235	0.0732685	0.205	0.4190622	0.173	12.67 ± 0.20	78.72	7.30	0.103 ± 0.004
07C2029	3.30 W	0.0004194	2.035	0.2888384	0.741	0.0007437	1.360	0.0553395	0.186	0.3437247	0.174	12.35 ± 0.27	70.60	5.51	0.082 ± 0.004
07C2030	4.04 W	0.0005550	1.498	0.2277389	0.847	0.0005058	1.799	0.0323872	0.221	0.2910916	0.213	12.64 ± 0.44	49.86	3.22	0.061 ± 0.003
07C2031	4.86 W	0.0008927	1.279	0.1578425	0.754	0.0003443	2.380	0.0143952	0.275	0.3153701	0.208	12.59 ± 1.35	20.33	1.43	0.039 ± 0.002
Σ		0.0140672	0.407	2.5596003	0.230	0.0145756	0.346	1.0021706	0.054	8.5154640	0.033				

Information on Analysis and Constants Used in Calculations
Sample = FAV-2 4D8-06
Material = Groundmass 210-300µm
Location = Fa'avevesi, Samoa
Analyst = Jamie Russell
Project = SAMOA
Mass Discrimination Law = LIN
Irradiation = OSU4D06
J = 0.00155710 ± 0.00000405
FCT-3 = 28.030 ± 0.003 Ma
IGSN = KOP000059
Preferred Age = Plateau Age
Classification = Eruption Age
Experiment Type = Incremental Heating
Extraction Method = Bulk Laser Heating
Heating = 600 sec
Isolation = 15.00 min
Instrument = MAP215-50
Lithology = Basalt
Lat-Lon = 12°39.0'S - 179°12.0'E
Age Equations = Conventional
Negative Intensities = Allowed
Decay Constant 40K = 5.530 ± 0.048 E-10 1/a
Decay Constant 39Ar = 2.940 ± 0.016 E-07 1/h
Decay Constant 37Ar = 8.230 ± 0.012 E-04 1/h
Decay Constant 36Cl = 2.236 ± 0.045 E-06 1/a
Production Ratio 36/38 in Cl = 316.0 ± 15.8

Results	40(r)/39(k) ± 2σ	Age ± 2σ (Ma)	MSWD	39Ar(k) (%),n	K/Ca ± 2σ
Age Plateau	4.6879 ± 0.0503	13.15 ± 0.16	2.83	34.57	0.223 ± 0.039
Error Mean	± 1.07%	± 1.19%	1%	6	
	Minimal External Error ± 0.28		1.63	2σ Confidence Limit	
	Analytical Error ± 0.14		1.6818	Error Magnification	
Total Fusion Age	4.5588 ± 0.0346	12.79 ± 0.12		26	0.168 ± 0.007
	± 0.76%	± 0.92%			
	Minimal External Error ± 0.25				
	Analytical Error ± 0.10				
Normal Isochron	5.3431 ± 0.3165	14.98 ± 0.89	0.98	34.57	
No Convergence	± 5.92%	± 5.92%	42%	6	
	Minimal External Error ± 0.93		2.41	2σ Confidence Limit	
	Analytical Error ± 0.88		1.0000	Error Magnification	
Inverse Isochron	5.6315 ± 0.6208	15.79 ± 1.73	0.73	34.57	
Clustered Data Points	± 11.02%	± 10.99%	57%	6	
	Minimal External Error ± 1.76		2.41	2σ Confidence Limit	
	Analytical Error ± 1.73		1.0000	Error Magnification	

Degassing Patterns		36Ar(a)	%1σ	36Ar(c)	%1σ	36Ar(ca)	%1σ	36Ar(cl)	%1σ	37Ar(ca)	%1σ	38Ar(a)	%1σ	38Ar(c)	%1σ	38Ar(k)	%1σ	38Ar(ca)	%1σ	38Ar(cl)	%1σ	39Ar(k)	%1σ	39Ar(ca)	%1σ	40Ar(r)	%1σ	40Ar(a)	%1σ	40Ar(c)	%1σ	40Ar(k)	%1σ
07C1998	0.00 W	0.003320	0.91	0.000000	0.00	0.000000	60.47	0.000000	66.87	0.000432	60.47	0.000621	0.91	0.000000	0.00	0.000002	8.18	0.000000	64.32	0.000018	67.09	0.000195	8.18	0.000000	60.50	0.024163	37.00	0.981082	0.91	0.000000	0.00	0.000000	26.21
07C1999	0.01 W	0.002533	0.80	0.000000	0.00	0.000000	36.10	0.000000	55.03	0.000732	36.10	0.000473	0.80	0.000000	0.00	0.000005	5.11	0.000000	42.22	0.000018	55.29	0.000383	5.11	0.000001	36.15	0.005434	110.70	0.748400	0.80	0.000000	0.00	0.000001	25.42
07C2000	0.02 W	0.001555	1.10	0.000000	0.00	0.000000	22.23	0.000000	0.00	0.001310	22.22	0.000291	1.10	0.000000	0.00	0.000009	2.60	0.000000	31.20	0.000000	0.00	0.000720	2.60	0.000001	22.30	0.002558	197.58	0.459583	1.10	0.000000	0.00	0.000001	25.03
07C2002	0.06 W	0.000856	1.52	0.000000	0.00	0.000000	15.86	0.000000	94.65	0.001766	15.86	0.000160	1.52	0.000000	0.00	0.000013	1.69	0.000000	27.04	0.000008	94.80	0.001079	1.69	0.000001	15.96	0.004410	87.37	0.252859	1.52	0.000000	0.00	0.000002	24.96
07C2003	0.12 W	0.000601	1.87	0.000000	0.00	0.000001	11.27	0.000000	0.00	0.002449	11.27	0.000112	1.87	0.000000	0.00	0.000018	1.25	0.000000	24.63	0.000000	0.00	0.001505	1.24	0.000002	11.41	0.001820	182.74	0.177473	1.87	0.000000	0.00	0.000002	24.93
07C2004	0.15 W	0.000426	2.11	0.000000	0.00	0.000001	6.61	0.000000	277.71	0.004597	6.60	0.000080	2.11	0.000000	0.00	0.000031	0.85	0.000000	22.87	0.000004	277.76	0.002569	0.85	0.000003	6.85	0.009711	27.43	0.126022	2.11	0.000000	0.00	0.000004	24.91
07C2006	0.18 W	0.000281	3.51	0.000000	0.00	0.000002	3.87	0.000000	0.00	0.008197	3.85	0.000053	3.51	0.000000	0.00	0.000049	0.57	0.000000	22.24	0.000000	0.00	0.004055	0.56	0.000006	4.26	0.013027	22.45	0.083008	3.51	0.000000	0.00	0.000007	24.91
07C2007	0.27 W	0.000221	4.52	0.000000	0.00	0.000005	1.93	0.000000	817.83	0.017101	1.90	0.000041	4.52	0.000000	0.00	0.000094	0.44	0.000001	21.98	0.000001	817.85	0.007782	0.43	0.000012	2.63	0.026967	11.00	0.065426	4.52	0.000000	0.00	0.000013	24.90
07C2008	0.32 W	0.000142	6.25	0.000000	0.00	0.000007	1.88	0.000000	0.00	0.024461	1.85	0.000027	6.25	0.000000	0.00	0.000129	0.47	0.000001	21.98	0.000000	0.00	0.010615	0.46	0.000017	2.60	0.038280	6.90	0.042072	6.25	0.000000	0.00	0.000018	24.90
07C2009	0.44 W	0.000087	9.94	0.000000	0.00	0.000010	1.25	0.000000	0.00	0.037898	1.19	0.000016	9.94	0.000000	0.00	0.000186	0.27	0.000001	21.93	0.000000	0.00	0.015332	0.26	0.000027	2.19	0.062703	4.11	0.025826	9.94	0.000000	0.00	0.000025	24.90
07C2012	0.53 W	0.000124	4.67	0.000000	0.00	0.000021	1.01	0.000000	119.24	0.077480	0.94	0.000023	4.67	0.000000	0.00	0.000377	0.24	0.000002	21.92	0.000008	119.36	0.031124	0.22	0.000055	2.06	0.131008	1.39	0.036786	4.67	0.000000	0.00	0.000051	24.90
07C2013	0.62 W	0.000056	11.85	0.000000	0.00	0.000023	1.16	0.000000	0.00	0.083733	1.10	0.000011	11.85	0.000000	0.00	0.000390	0.25	0.000003	21.93	0.000000	0.00	0.032201	0.23	0.000059	2.14	0.147152	1.40	0.016606	11.85	0.000000	0.00	0.000053	24.90
07C2015	0.71 W ✓	0.000046	12.51	0.000000	0.00	0.000028	1.15	0.000000	0.00	0.103710	1.09	0.000009	12.51	0.000000	0.00	0.000518	0.25	0.000003	21.93	0.000000	0.00	0.042762	0.23	0.000074	2.13	0.203829	0.88	0.013535	12.51	0.000000	0.00	0.000071	24.90
07C2016	0.88 W ✓	0.000056	10.14	0.000000	0.00	0.000031	1.44	0.000000	0.00	0.114695	1.39	0.000010	10.14	0.000000	0.00	0.000638	0.22	0.000004	21.94	0.000000	0.00	0.052713	0.20	0.000081	2.30	0.250596	0.71	0.016493	10.14	0.000000	0.00	0.000087	24.90
07C2017	1.06 W ✓	0.000059	15.06	0.000000	0.00	0.000029	1.07	0.000000	0.00	0.109317	1.00	0.000011	15.06	0.000000	0.00	0.000673	0.29	0.000003	21.92	0.000000	0.00	0.055602	0.28	0.000078	2.09	0.262980	1.04	0.017535	15.06	0.000000	0.00	0.000092	24.90
07C2019	1.15 W ✓	0.000061	13.30	0.000000	0.00	0.000027	0.98	0.000000	0.00	0.100180	0.91	0.000011	13.30	0.000000	0.00	0.000702	0.22	0.000003	21.92	0.000000	0.00	0.057929	0.20	0.000071	2.04	0.272353	0.91	0.018019	13.30	0.000000	0.00	0.000096	24.90
07C2020	1.27 W ✓	0.000084	7.57	0.000000	0.00	0.000030	0.98	0.000000	0.00	0.110773	0.91	0.000016	7.57	0.000000	0.00	0.000864	0.22	0.000004	21.92	0.000000	0.00	0.071305	0.19	0.000079	2.04	0.330943	0.60	0.024796	7.57	0.000000	0.00	0.000118	24.90
07C2021	1.44 W ✓	0.000086	7.28	0.000000	0.00	0.000024	1.06	0.000000	0.00	0.089811	1.00	0.000016	7.28	0.000000	0.00	0.000793	0.22	0.000003	21.92	0.000000	0.00	0.065521	0.20	0.000064	2.08	0.303098	0.64	0.025355	7.28	0.000000	0.00	0.000108	24.90
07C2022	1.59 W	0.000096	8.34	0.000000	0.00	0.000022	0.96	0.000000	0.00	0.082646	0.88	0.000018	8.34	0.000000	0.00	0.000778	0.26	0.000003	21.92	0.000000	0.00	0.064237	0.24	0.000059	2.03	0.295227	0.83	0.028449	8.34	0.000000	0.00	0.000106	24.90
07C2024	1.77 W	0.000246	2.84	0.000000	0.00	0.000056	0.89	0.000000	0.00	0.208471	0.81	0.000046	2.84	0.000000	0.00	0.001685	0.21	0.000007	21.92	0.000000	0.00	0.139100	0.18	0.000148	2.00	0.632081	0.34	0.072554	2.84	0.000000	0.00	0.000230	24.90
07C2025	2.00 W	0.000211	3.42	0.000000	0.00	0.000047	0.80	0.000000	0.00	0.174691	0.71	0.000039	3.42	0.000000	0.00	0.001087	0.22	0.000006	21.91	0.000000	0.00	0.089750	0.20	0.000124	1.96	0.404797	0.55	0.062293	3.42	0.000000	0.00	0.000148	24.90
07C2026	2.39 W	0.000244	3.26	0.000000	0.00	0.000061	0.91	0.000000	0.00	0.225230	0.84	0.000046	3.26	0.000000	0.00	0.000959	0.23	0.000007	21.92	0.000000	0.00	0.079180	0.20	0.000160	2.01	0.355513	0.69	0.072032	3.26	0.000000	0.00	0.000131	24.90
07C2027	2.83 W	0.000301	2.77	0.000000	0.00	0.000082	0.90	0.000000	158.91	0.305499	0.82	0.000056	2.77	0.000000	0.00	0.000885	0.23	0.000010	21.92	0.000008	159.00	0.073052	0.21	0.000217	2.00	0.329874	0.78	0.089067	2.77	0.000000	0.00	0.000121	24.90
07C2029	3.30 W	0.000342	2.50	0.000000	0.00	0.000078	0.83	0.000000	358.77	0.288838	0.74	0.000064	2.50	0.000000	0.00	0.000668	0.21	0.000009	21.91	0.000003	358.81	0.055135	0.19	0.000205	1.97	0.242666	1.07	0.100968	2.50	0.000000	0.00	0.000091	24.90
07C2030	4.04 W	0.000494	1.69	0.000000	0.00	0.000061	0.92	0.000000	59.32	0.227739	0.85	0.000092	1.69	0.000000	0.00	0.000390	0.24	0.000007	21.92	0.000016	59.57	0.032226	0.22	0.000161	2.02	0.145148	1.75	0.145891	1.69	0.000000	0.00	0.000053	24.90
07C2031	4.86 W	0.000850	1.34	0.000000	0.00	0.000042	0.84	0.000000	115.50	0.157843	0.75	0.000159	1.34	0.000000	0.00	0.000173	0.30	0.000005	21.91	0.000007	115.63	0.014283	0.28	0.000112	1.98	0.064100	5.37	0.251246	1.34	0.000000	0.00	0.000024	24.90
Σ		0.013379	0.43	0.000000	0.00	0.000689	0.25	0.000000	34.63	2.559600	0.23	0.002500	0.43	0.000000	0.00	0.012114	0.06	0.000082	5.85	0.000090	34.67	1.000356	0.05	0.001815	0.54	4.560438	0.38	3.953375	0.43	0.000000	0.00	0.001651	6.60
Σ								0.014067	0.41	2.559600	0.23									0.014787	0.23			1.002171	0.05							8.515464	0.28

Additional Parameters		40(r)/39(k)	1 σ	40(r+a)	1 σ	40Ar/39Ar	1 σ	37Ar/39Ar	1 σ	36Ar/39Ar	1 σ	Time (days)	37Ar (decay)	39Ar (decay)	40Ar (moles)
07C1998	0.00 W	123.717005	46.88546	1.005245	0.00055	5138.826078	419.89666	2.208653	1.34775	16.972874	1.39540	142.015	16.56910860	1.00100344	3.317E-18
07C1999	0.01 W	14.193211	15.72899	0.753834	0.00078	1966.387756	100.32822	1.908342	0.69575	6.606997	0.34112	142.033	16.57501875	1.00100357	2.488E-18
07C2000	0.02 W	3.552373	7.01923	0.462141	0.00043	640.886885	16.61932	1.817071	0.40654	2.157299	0.06070	142.051	16.58093101	1.00100370	1.525E-18
07C2002	0.06 W	4.086841	3.57143	0.257269	0.00029	238.125161	4.03300	1.634978	0.26074	0.792460	0.01800	142.091	16.59412749	1.00100398	8.490E-19
07C2003	0.12 W	1.209038	2.20949	0.179293	0.00026	118.990704	1.48787	1.625252	0.18421	0.399021	0.00894	142.110	16.60027427	1.00100411	5.917E-19
07C2004	0.15 W	3.779476	1.03716	0.135732	0.00023	52.762382	0.45507	1.787079	0.11887	0.166255	0.00376	142.128	16.60619553	1.00100424	4.479E-19
07C2006	0.18 W	3.212747	0.72133	0.096035	0.00023	23.651759	0.14429	2.018562	0.07848	0.069721	0.00246	142.164	16.61804440	1.00100449	3.169E-19
07C2007	0.27 W	3.465229	0.38140	0.092393	0.00025	11.855617	0.06000	2.194023	0.04262	0.028997	0.00129	142.182	16.62397201	1.00100462	3.049E-19
07C2008	0.32 W	3.606122	0.24929	0.080351	0.00025	7.558768	0.04167	2.300601	0.04373	0.014009	0.00084	142.200	16.62990173	1.00100475	2.652E-19
07C2009	0.44 W	4.089706	0.16839	0.088529	0.00022	5.765729	0.02036	2.467517	0.03014	0.006354	0.00057	142.218	16.63583357	1.00100488	2.922E-19
07C2012	0.53 W	4.209294	0.05924	0.167794	0.00061	5.383375	0.02280	2.485064	0.02398	0.004661	0.00019	142.681	16.78850318	1.00100814	5.539E-19
07C2013	0.62 W	4.569753	0.06485	0.163757	0.00061	5.077733	0.02224	2.595534	0.02915	0.002440	0.00021	142.701	16.79518269	1.00100829	5.406E-19
07C2015	0.71 W ✓	4.766548	0.04354	0.217364	0.00061	5.075989	0.01853	2.421108	0.02709	0.001721	0.00013	142.737	16.80716641	1.00100854	7.175E-19
07C2016	0.88 W ✓	4.754004	0.03489	0.267089	0.00058	5.060726	0.01489	2.172511	0.03054	0.001642	0.00011	142.756	16.81339209	1.00100867	8.817E-19
07C2017	1.06 W ✓	4.729669	0.05089	0.280515	0.00071	5.039667	0.01889	1.963314	0.02042	0.001594	0.00016	142.773	16.81915868	1.00100880	9.260E-19
07C2019	1.15 W ✓	4.701456	0.04379	0.290372	0.00064	5.008021	0.01475	1.727227	0.01608	0.001516	0.00014	142.808	16.83092863	1.00100905	9.585E-19
07C2020	1.27 W ✓	4.641251	0.02916	0.355739	0.00063	4.985150	0.01304	1.551810	0.01442	0.001593	0.00009	142.827	16.83716312	1.00100918	1.174E-18
07C2021	1.44 W ✓	4.625981	0.03111	0.328453	0.00062	5.009736	0.01372	1.369386	0.01392	0.001677	0.00010	142.844	16.84293786	1.00100930	1.084E-18
07C2022	1.59 W	4.595897	0.03991	0.323676	0.00067	5.035827	0.01591	1.285412	0.01177	0.001843	0.00012	142.863	16.84894568	1.00100943	1.068E-18
07C2024	1.77 W	4.544078	0.01759	0.704635	0.00066	5.061945	0.01033	1.497125	0.01248	0.002166	0.00005	142.899	16.86096776	1.00100968	2.326E-18
07C2025	2.00 W	4.510268	0.02626	0.467090	0.00060	5.198815	0.01237	1.943730	0.01441	0.002868	0.00008	142.917	16.86698202	1.00100981	1.542E-18
07C2026	2.39 W	4.489921	0.03227	0.427545	0.00070	5.390422	0.01402	2.838794	0.02441	0.003836	0.00010	142.935	16.87299842	1.00100994	1.411E-18
07C2027	2.83 W	4.515619	0.03637	0.418942	0.00073	5.719543	0.01535	4.169579	0.03516	0.005235	0.00011	142.953	16.87901696	1.00101007	1.383E-18
07C2029	3.30 W	4.401330	0.04785	0.343634	0.00060	6.211203	0.01581	5.219391	0.03985	0.007578	0.00015	142.988	16.89082881	1.00101032	1.134E-18
07C2030	4.04 W	4.504096	0.07941	0.291038	0.00062	8.987862	0.02761	7.031759	0.06159	0.017136	0.00026	143.007	16.89708549	1.00101045	9.606E-19
07C2031	4.86 W	4.487810	0.24115	0.315347	0.00066	21.908078	0.07566	10.964978	0.08801	0.062014	0.00081	143.024	16.90288077	1.00101057	1.041E-18

Procedure Blanks		36Ar	1σ	37Ar	1σ	38Ar	1σ	39Ar	1σ	40Ar	1σ
07C1998	0.00 W	0.000040	0.000007	0.000018	0.000016	0.000010	0.000006	0.000063	0.000015	0.011767	0.000177
07C1999	0.01 W	0.000040	0.000007	0.000018	0.000016	0.000010	0.000006	0.000063	0.000015	0.011817	0.000179
07C2000	0.02 W	0.000039	0.000007	0.000019	0.000016	0.000010	0.000006	0.000063	0.000015	0.011757	0.000180
07C2002	0.06 W	0.000035	0.000007	0.000022	0.000016	0.000011	0.000006	0.000062	0.000015	0.011071	0.000185
07C2003	0.12 W	0.000033	0.000007	0.000025	0.000016	0.000011	0.000006	0.000061	0.000015	0.010410	0.000187
07C2004	0.15 W	0.000031	0.000007	0.000028	0.000017	0.000011	0.000006	0.000058	0.000015	0.009515	0.000189
07C2006	0.18 W	0.000026	0.000007	0.000035	0.000017	0.000012	0.000006	0.000051	0.000016	0.006798	0.000194
07C2007	0.27 W	0.000023	0.000007	0.000039	0.000017	0.000011	0.000006	0.000045	0.000016	0.004887	0.000197
07C2008	0.32 W	0.000020	0.000007	0.000044	0.000017	0.000011	0.000006	0.000038	0.000016	0.002545	0.000199
07C2009	0.44 W	0.000016	0.000008	0.000050	0.000018	0.000011	0.000006	0.000028	0.000017	0.002545	0.000199
07C2012	0.53 W	0.000027	0.000005	0.000012	0.000005	0.000006	0.000006	0.000059	0.000030	0.007076	0.000569
07C2013	0.62 W	0.000033	0.000005	0.000016	0.000005	0.000005	0.000006	0.000054	0.000029	0.007723	0.000563
07C2015	0.71 W	0.000037	0.000004	0.000021	0.000005	0.000004	0.000006	0.000050	0.000029	0.008328	0.000553
07C2016	0.88 W	0.000037	0.000004	0.000022	0.000005	0.000005	0.000006	0.000050	0.000029	0.008466	0.000548
07C2017	1.06 W	0.000037	0.000004	0.000023	0.000005	0.000006	0.000006	0.000052	0.000029	0.008539	0.000544
07C2019	1.15 W	0.000034	0.000004	0.000023	0.000005	0.000009	0.000006	0.000057	0.000028	0.008647	0.000538
07C2020	1.27 W	0.000032	0.000004	0.000022	0.000005	0.000010	0.000006	0.000060	0.000028	0.008734	0.000535
07C2021	1.44 W	0.000031	0.000004	0.000022	0.000005	0.000011	0.000006	0.000063	0.000028	0.008858	0.000533
07C2022	1.59 W	0.000030	0.000004	0.000021	0.000005	0.000012	0.000006	0.000066	0.000028	0.009041	0.000531
07C2024	1.77 W	0.000029	0.000004	0.000020	0.000005	0.000013	0.000006	0.000071	0.000028	0.009596	0.000528
07C2025	2.00 W	0.000029	0.000004	0.000020	0.000005	0.000013	0.000006	0.000073	0.000028	0.009964	0.000528
07C2026	2.39 W	0.000030	0.000004	0.000020	0.000005	0.000012	0.000006	0.000074	0.000028	0.010379	0.000528
07C2027	2.83 W	0.000032	0.000004	0.000020	0.000005	0.000011	0.000006	0.000075	0.000028	0.010827	0.000528
07C2029	3.30 W	0.000036	0.000004	0.000020	0.000005	0.000009	0.000006	0.000076	0.000028	0.011711	0.000530
07C2030	4.04 W	0.000038	0.000004	0.000020	0.000005	0.000007	0.000006	0.000075	0.000028	0.012120	0.000532
07C2031	4.86 W	0.000041	0.000004	0.000021	0.000005	0.000006	0.000006	0.000075	0.000028	0.012416	0.000534

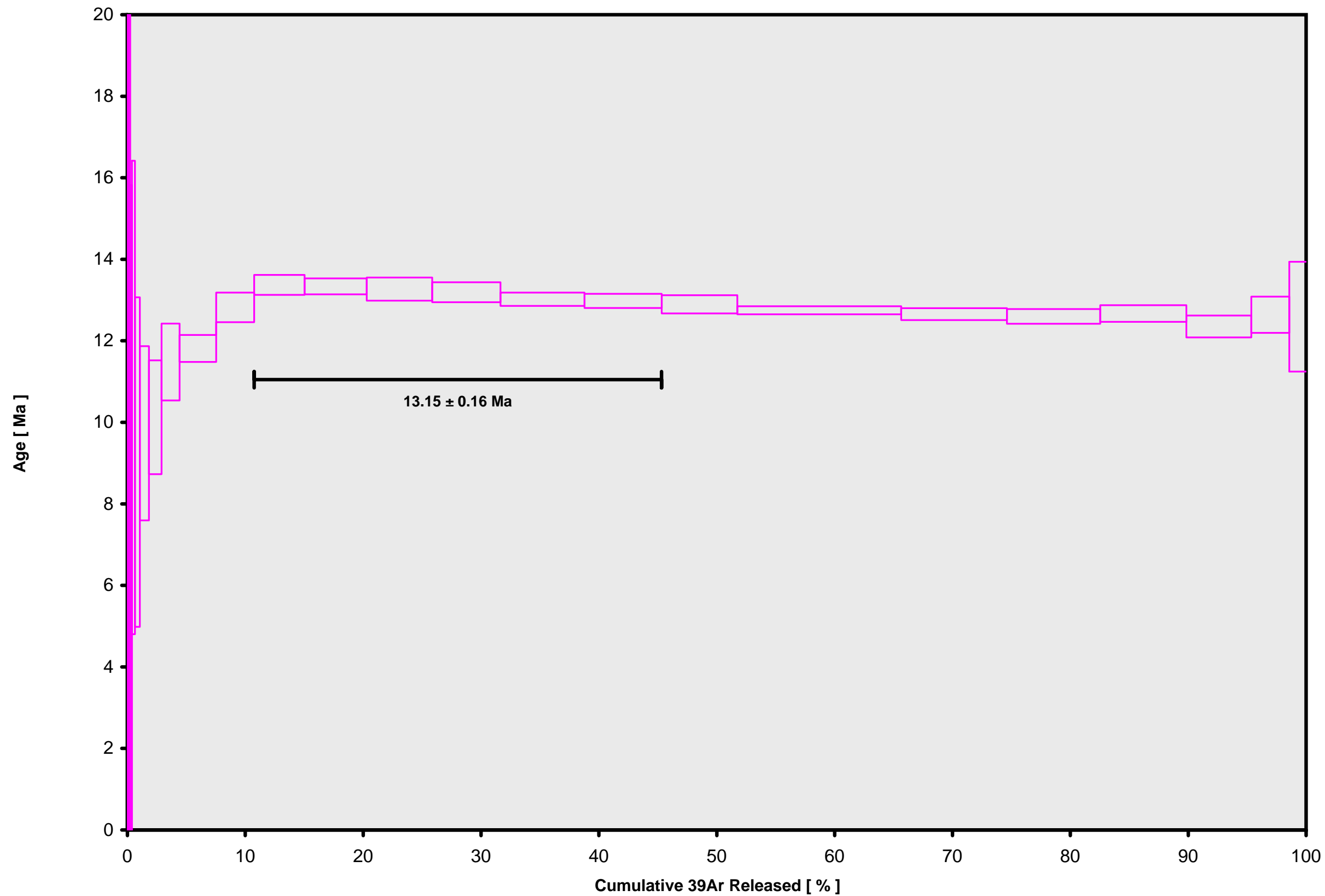
Intercept Values	36Ar			37Ar			38Ar			39Ar			40Ar								
	1σ	r2	LIN #	1σ	r2	LIN #	1σ	r2	LIN #	1σ	r2	LIN #	1σ	r2	LIN #						
07C1998	0.00 W	0.003355	0.000021	0.8048	LIN #	0.000043	0.000004	0.9563	LIN #	0.000646	0.000009	0.2516	LIN #	0.000255	0.000007	0.9998	LIN #	1.000504	0.000511	0.9982	EXP #
07C1999	0.01 W	0.002568	0.000010	0.9548	LIN # 1	0.000062	0.000004	0.9326	LIN #	0.000501	0.000006	0.0178	LIN #	0.000440	0.000013	0.9992	LIN #	0.753224	0.000747	0.9936	LIN #
07C2000	0.02 W	0.001591	0.000012	0.8060	LIN #	0.000097	0.000008	0.2913	LIN #	0.000304	0.000009	0.1130	LIN #	0.000774	0.000011	0.9989	LIN #	0.466208	0.000383	0.9957	EXP #
07C2002	0.06 W	0.000890	0.000010	0.5791	LIN #	0.000128	0.000005	0.5773	LIN #	0.000190	0.000004	0.0007	LIN # 10	0.001127	0.000010	0.9980	LIN #	0.264038	0.000225	0.9916	EXP #
07C2003	0.12 W	0.000634	0.000008	0.2816	LIN #	0.000171	0.000004	0.8306	LIN #	0.000137	0.000006	0.3878	LIN #	0.001547	0.000010	0.9973	LIN #	0.186681	0.000182	0.8980	EXP #
07C2004	0.15 W	0.000458	0.000005	0.0288	LIN #	0.000303	0.000008	0.3827	LIN #	0.000125	0.000007	0.0409	LIN #	0.002596	0.000015	0.9921	EXP #	0.142950	0.000128	0.0304	LIN # 5 6
07C2006	0.18 W	0.000309	0.000007	0.0396	LIN #	0.000525	0.000008	0.0955	LIN #	0.000110	0.000006	0.1641	LIN #	0.004058	0.000015	0.9832	EXP #	0.101220	0.000130	0.7202	LIN # 10
07C2007	0.27 W	0.000249	0.000007	0.0009	LIN #	0.001062	0.000007	0.8520	LIN #	0.000147	0.000005	0.0340	LIN #	0.007737	0.000026	0.3793	LIN #	0.095761	0.000156	0.0379	LIN # 1
07C2008	0.32 W	0.000168	0.000005	0.0003	LIN #	0.001507	0.000019	0.5219	LIN # 1	0.000162	0.000004	0.0026	LIN #	0.010530	0.000042	0.4649	LIN # 1	0.081601	0.000150	0.9699	EXP # 1
07C2009	0.44 W	0.000114	0.000005	0.4542	LIN #	0.002316	0.000015	0.7358	LIN # 1	0.000209	0.000004	0.0079	LIN #	0.015185	0.000025	0.8300	LIN # 1	0.089656	0.000082	0.9883	EXP #
07C2012	0.53 W	0.000172	0.000004	0.0060	LIN #	0.004603	0.000032	0.8491	LIN #	0.000413	0.000006	0.0010	LIN #	0.030809	0.000036	0.9848	LIN #	0.172048	0.000208	0.9187	LIN #
07C2013	0.62 W	0.000111	0.000005	0.2196	LIN #	0.004974	0.000045	0.8473	LIN # 1	0.000402	0.000006	0.4228	LIN #	0.031865	0.000042	0.9876	LIN # 1	0.168683	0.000241	0.9162	LIN #
07C2015	0.71 W	0.000110	0.000004	0.7404	LIN #	0.006156	0.000055	0.8613	LIN # 1	0.000511	0.000008	0.0628	LIN #	0.042281	0.000066	0.9796	LIN #	0.221967	0.000253	0.9709	LIN #
07C2016	0.88 W	0.000123	0.000004	0.5514	LIN #	0.006806	0.000084	0.6640	LIN # 1	0.000625	0.000008	0.0981	LIN #	0.052109	0.000055	0.9901	LIN #	0.271061	0.000182	0.9916	LIN #
07C2017	1.06 W	0.000125	0.000008	0.3517	LIN #	0.006487	0.000050	0.8891	LIN # 1	0.000666	0.000012	0.1464	LIN #	0.054962	0.000121	0.9740	LIN # 1	0.284368	0.000449	0.9625	EXP #
07C2019	1.15 W	0.000121	0.000007	0.1943	LIN #	0.005941	0.000039	0.8930	LIN # 1	0.000694	0.000009	0.1639	LIN #	0.057238	0.000059	0.9924	LIN #	0.294085	0.000339	0.9832	LIN #
07C2020	1.27 W	0.000145	0.000005	0.2675	LIN #	0.006564	0.000043	0.9018	LIN # 1	0.000868	0.000007	0.8296	LIN #	0.070436	0.000071	0.9950	LIN #	0.358461	0.000325	0.9911	LIN #
07C2021	1.44 W	0.000140	0.000005	0.4804	LIN #	0.005323	0.000041	0.6675	LIN #	0.000782	0.000011	0.0179	LIN #	0.064722	0.000071	0.9910	LIN #	0.331746	0.000315	0.9863	LIN #
07C2022	1.59 W	0.000147	0.000007	0.3966	LIN #	0.004898	0.000030	0.8575	LIN # 1	0.000783	0.000006	0.5117	LIN #	0.063454	0.000110	0.9804	LIN # 1	0.327227	0.000396	0.9742	LIN #
07C2024	1.77 W	0.000329	0.000005	0.4123	LIN #	0.012311	0.000064	0.9367	LIN # 1	0.001720	0.000007	0.8192	LIN #	0.137327	0.000116	0.9960	LIN #	0.702311	0.000381	0.9976	EXP #
07C2025	2.00 W	0.000286	0.000006	0.1907	LIN #	0.010315	0.000035	0.9737	LIN # 1	0.001124	0.000004	0.4150	LIN # 8	0.088652	0.000105	0.9918	LIN #	0.469041	0.000270	0.9963	LIN #
07C2026	2.39 W	0.000333	0.000006	0.1234	LIN #	0.013288	0.000074	0.9051	LIN # 1	0.001006	0.000011	0.1470	LIN #	0.078271	0.000094	0.9931	LIN # 1	0.430563	0.000446	0.9902	EXP # 7
07C2027	2.83 W	0.000414	0.000007	0.2222	LIN #	0.018010	0.000095	0.9399	LIN # 1	0.000960	0.000010	0.1781	LIN #	0.072288	0.000089	0.9889	EXP #	0.422537	0.000489	0.9868	LIN # 7
07C2029	3.30 W	0.000454	0.000007	0.0260	LIN #	0.017013	0.000067	0.9613	LIN # 1	0.000745	0.000008	0.3727	LIN #	0.054601	0.000044	0.9966	EXP # 1	0.349254	0.000270	0.9940	LIN #
07C2030	4.04 W	0.000591	0.000006	0.0024	LIN #	0.013418	0.000077	0.9419	LIN # 1	0.000508	0.000007	0.1070	LIN #	0.031995	0.000040	0.9868	LIN # 1	0.298026	0.000313	0.9846	LIN #
07C2031	4.86 W	0.000931	0.000009	0.6111	LIN #	0.009303	0.000039	0.9570	LIN # 1	0.000347	0.000005	0.0052	LIN #	0.014261	0.000016	0.1662	LIN # 3	0.322180	0.000376	0.9905	EXP #

Institute of Geophysics and Planetary Physics
Scripps Institution of Oceanography, La Jolla, USA

Sample Parameters	Sample	Material	Location	Analyst	Temp	Standard (in Ma)	%1σ	J	%1σ	MDF	%1σ	Volume Ratio	Sensitivity (mol/volt)	Day	Month	Year	Hour	Min	Resist	Irradiation	Project	Experiment	Nmb	Standard Name	
07C1998	0.00 W	FAV-2 4D8-06	Groundmass 210-300μm	Fa'avevesi, Samoa	Jamie Russell	0	28.03	0.01	0.0015571	0.26	1.00378	0.16	1.0165	3.300E-18	12	MAY	2007	16	21	001	OSU4D06	Samoa	07C1998	01	FCT-3
07C1999	0.01 W	FAV-2 4D8-06	Groundmass 210-300μm	Fa'avevesi, Samoa	Jamie Russell	0.01	28.03	0.01	0.0015571	0.26	1.00378	0.16	1.0165	3.300E-18	12	MAY	2007	16	47	001	OSU4D06	Samoa	07C1998	01	FCT-3
07C2000	0.02 W	FAV-2 4D8-06	Groundmass 210-300μm	Fa'avevesi, Samoa	Jamie Russell	0.02	28.03	0.01	0.0015571	0.26	1.00378	0.16	1.0165	3.300E-18	12	MAY	2007	17	13	001	OSU4D06	Samoa	07C1998	01	FCT-3
07C2002	0.06 W	FAV-2 4D8-06	Groundmass 210-300μm	Fa'avevesi, Samoa	Jamie Russell	0.06	28.03	0.01	0.0015571	0.26	1.00378	0.16	1.0163	3.300E-18	12	MAY	2007	18	11	001	OSU4D06	Samoa	07C1998	01	FCT-3
07C2003	0.12 W	FAV-2 4D8-06	Groundmass 210-300μm	Fa'avevesi, Samoa	Jamie Russell	0.12	28.03	0.01	0.0015571	0.26	1.00378	0.16	1.0162	3.300E-18	12	MAY	2007	18	38	001	OSU4D06	Samoa	07C1998	01	FCT-3
07C2004	0.15 W	FAV-2 4D8-06	Groundmass 210-300μm	Fa'avevesi, Samoa	Jamie Russell	0.15	28.03	0.01	0.0015571	0.26	1.00378	0.16	1.0161	3.300E-18	12	MAY	2007	19	04	001	OSU4D06	Samoa	07C1998	01	FCT-3
07C2006	0.18 W	FAV-2 4D8-06	Groundmass 210-300μm	Fa'avevesi, Samoa	Jamie Russell	0.18	28.03	0.01	0.0015571	0.26	1.00378	0.16	1.016	3.300E-18	12	MAY	2007	19	56	001	OSU4D06	Samoa	07C1998	01	FCT-3
07C2007	0.27 W	FAV-2 4D8-06	Groundmass 210-300μm	Fa'avevesi, Samoa	Jamie Russell	0.27	28.03	0.01	0.0015571	0.26	1.00378	0.16	1.016	3.300E-18	12	MAY	2007	20	22	001	OSU4D06	Samoa	07C1998	01	FCT-3
07C2008	0.32 W	FAV-2 4D8-06	Groundmass 210-300μm	Fa'avevesi, Samoa	Jamie Russell	0.32	28.03	0.01	0.0015571	0.26	1.00378	0.16	1.0161	3.300E-18	12	MAY	2007	20	48	001	OSU4D06	Samoa	07C1998	01	FCT-3
07C2009	0.44 W	FAV-2 4D8-06	Groundmass 210-300μm	Fa'avevesi, Samoa	Jamie Russell	0.44	28.03	0.01	0.0015571	0.26	1.00378	0.16	1.0161	3.300E-18	12	MAY	2007	21	14	001	OSU4D06	Samoa	07C1998	01	FCT-3
07C2012	0.53 W	FAV-2 4D8-06	Groundmass 210-300μm	Fa'avevesi, Samoa	Jamie Russell	0.53	28.03	0.01	0.0015571	0.26	1.00378	0.16	1.0167	3.300E-18	13	MAY	2007	08	20	001	OSU4D06	Samoa	07C1998	01	FCT-3
07C2013	0.62 W	FAV-2 4D8-06	Groundmass 210-300μm	Fa'avevesi, Samoa	Jamie Russell	0.62	28.03	0.01	0.0015571	0.26	1.00378	0.16	1.0169	3.300E-18	13	MAY	2007	08	49	001	OSU4D06	Samoa	07C1998	01	FCT-3
07C2015	0.71 W	FAV-2 4D8-06	Groundmass 210-300μm	Fa'avevesi, Samoa	Jamie Russell	0.71	28.03	0.01	0.0015571	0.26	1.00378	0.16	1.0171	3.300E-18	13	MAY	2007	09	41	001	OSU4D06	Samoa	07C1998	01	FCT-3
07C2016	0.88 W	FAV-2 4D8-06	Groundmass 210-300μm	Fa'avevesi, Samoa	Jamie Russell	0.88	28.03	0.01	0.0015571	0.26	1.00378	0.16	1.0169	3.300E-18	13	MAY	2007	10	08	001	OSU4D06	Samoa	07C1998	01	FCT-3
07C2017	1.06 W	FAV-2 4D8-06	Groundmass 210-300μm	Fa'avevesi, Samoa	Jamie Russell	1.06	28.03	0.01	0.0015571	0.26	1.00378	0.16	1.0168	3.300E-18	13	MAY	2007	10	33	001	OSU4D06	Samoa	07C1998	01	FCT-3
07C2019	1.15 W	FAV-2 4D8-06	Groundmass 210-300μm	Fa'avevesi, Samoa	Jamie Russell	1.15	28.03	0.01	0.0015571	0.26	1.00378	0.16	1.0171	3.300E-18	13	MAY	2007	11	24	001	OSU4D06	Samoa	07C1998	01	FCT-3
07C2020	1.27 W	FAV-2 4D8-06	Groundmass 210-300μm	Fa'avevesi, Samoa	Jamie Russell	1.27	28.03	0.01	0.0015571	0.26	1.00378	0.16	1.0171	3.300E-18	13	MAY	2007	11	51	001	OSU4D06	Samoa	07C1998	01	FCT-3
07C2021	1.44 W	FAV-2 4D8-06	Groundmass 210-300μm	Fa'avevesi, Samoa	Jamie Russell	1.44	28.03	0.01	0.0015571	0.26	1.00378	0.16	1.0171	3.300E-18	13	MAY	2007	12	16	001	OSU4D06	Samoa	07C1998	01	FCT-3
07C2022	1.59 W	FAV-2 4D8-06	Groundmass 210-300μm	Fa'avevesi, Samoa	Jamie Russell	1.59	28.03	0.01	0.0015571	0.26	1.00378	0.16	1.0171	3.300E-18	13	MAY	2007	12	42	001	OSU4D06	Samoa	07C1998	01	FCT-3
07C2024	1.77 W	FAV-2 4D8-06	Groundmass 210-300μm	Fa'avevesi, Samoa	Jamie Russell	1.77	28.03	0.01	0.0015571	0.26	1.00378	0.16	1.0173	3.300E-18	13	MAY	2007	13	34	001	OSU4D06	Samoa	07C1998	01	FCT-3
07C2025	2.00 W	FAV-2 4D8-06	Groundmass 210-300μm	Fa'avevesi, Samoa	Jamie Russell	2	28.03	0.01	0.0015571	0.26	1.00378	0.16	1.0174	3.300E-18	13	MAY	2007	14	00	001	OSU4D06	Samoa	07C1998	01	FCT-3
07C2026	2.39 W	FAV-2 4D8-06	Groundmass 210-300μm	Fa'avevesi, Samoa	Jamie Russell	2.39	28.03	0.01	0.0015571	0.26	1.00378	0.16	1.0174	3.300E-18	13	MAY	2007	14	26	001	OSU4D06	Samoa	07C1998	01	FCT-3
07C2027	2.83 W	FAV-2 4D8-06	Groundmass 210-300μm	Fa'avevesi, Samoa	Jamie Russell	2.83	28.03	0.01	0.0015571	0.26	1.00378	0.16	1.0174	3.300E-18	13	MAY	2007	14	52	001	OSU4D06	Samoa	07C1998	01	FCT-3
07C2029	3.30 W	FAV-2 4D8-06	Groundmass 210-300μm	Fa'avevesi, Samoa	Jamie Russell	3.3	28.03	0.01	0.0015571	0.26	1.00378	0.16	1.0177	3.300E-18	13	MAY	2007	15	43	001	OSU4D06	Samoa	07C1998	01	FCT-3
07C2030	4.04 W	FAV-2 4D8-06	Groundmass 210-300μm	Fa'avevesi, Samoa	Jamie Russell	4.04	28.03	0.01	0.0015571	0.26	1.00378	0.16	1.0174	3.300E-18	13	MAY	2007	16	10	001	OSU4D06	Samoa	07C1998	01	FCT-3
07C2031	4.86 W	FAV-2 4D8-06	Groundmass 210-300μm	Fa'avevesi, Samoa	Jamie Russell	4.86	28.03	0.01	0.0015571	0.26	1.00378	0.16	1.0174	3.300E-18	13	MAY	2007	16	35	001	OSU4D06	Samoa	07C1998	01	FCT-3

Irradiation Constants	40/36(a)		40/36(c)		38/36(a)		38/36(c)		39/37(ca)		38/37(ca)		36/37(ca)		40/39(k)		38/39(k)		36/38(cl)		K/Ca		K/Cl		Ca/Cl			
	W	%1σ	W	%1σ	W	%1σ	W	%1σ	W	%1σ	W	%1σ	W	%1σ	W	%1σ	W	%1σ	W	%1σ	W	%1σ	W	%1σ	W	%1σ		
07C1998	0.00	0	295.5	0	0.018	35	0.1869	0	1.493	3	0.000709	1.83	0.000032	21.9	0.000269	0.37	0.00165	24.9	0.01211	0.1	0	0	0.43	2	0	0	0	0
07C1999	0.01	0	295.5	0	0.018	35	0.1869	0	1.493	3	0.000709	1.83	0.000032	21.9	0.000269	0.37	0.00165	24.9	0.01211	0.1	0	0	0.43	2	0	0	0	0
07C2000	0.02	0	295.5	0	0.018	35	0.1869	0	1.493	3	0.000709	1.83	0.000032	21.9	0.000269	0.37	0.00165	24.9	0.01211	0.1	0	0	0.43	2	0	0	0	0
07C2002	0.06	0	295.5	0	0.018	35	0.1869	0	1.493	3	0.000709	1.83	0.000032	21.9	0.000269	0.37	0.00165	24.9	0.01211	0.1	0	0	0.43	2	0	0	0	0
07C2003	0.12	0	295.5	0	0.018	35	0.1869	0	1.493	3	0.000709	1.83	0.000032	21.9	0.000269	0.37	0.00165	24.9	0.01211	0.1	0	0	0.43	2	0	0	0	0
07C2004	0.15	0	295.5	0	0.018	35	0.1869	0	1.493	3	0.000709	1.83	0.000032	21.9	0.000269	0.37	0.00165	24.9	0.01211	0.1	0	0	0.43	2	0	0	0	0
07C2006	0.18	0	295.5	0	0.018	35	0.1869	0	1.493	3	0.000709	1.83	0.000032	21.9	0.000269	0.37	0.00165	24.9	0.01211	0.1	0	0	0.43	2	0	0	0	0
07C2007	0.27	0	295.5	0	0.018	35	0.1869	0	1.493	3	0.000709	1.83	0.000032	21.9	0.000269	0.37	0.00165	24.9	0.01211	0.1	0	0	0.43	2	0	0	0	0
07C2008	0.32	0	295.5	0	0.018	35	0.1869	0	1.493	3	0.000709	1.83	0.000032	21.9	0.000269	0.37	0.00165	24.9	0.01211	0.1	0	0	0.43	2	0	0	0	0
07C2009	0.44	0	295.5	0	0.018	35	0.1869	0	1.493	3	0.000709	1.83	0.000032	21.9	0.000269	0.37	0.00165	24.9	0.01211	0.1	0	0	0.43	2	0	0	0	0
07C2012	0.53	0	295.5	0	0.018	35	0.1869	0	1.493	3	0.000709	1.83	0.000032	21.9	0.000269	0.37	0.00165	24.9	0.01211	0.1	0	0	0.43	2	0	0	0	0
07C2013	0.62	0	295.5	0	0.018	35	0.1869	0	1.493	3	0.000709	1.83	0.000032	21.9	0.000269	0.37	0.00165	24.9	0.01211	0.1	0	0	0.43	2	0	0	0	0
07C2015	0.71	0	295.5	0	0.018	35	0.1869	0	1.493	3	0.000709	1.83	0.000032	21.9	0.000269	0.37	0.00165	24.9	0.01211	0.1	0	0	0.43	2	0	0	0	0
07C2016	0.88	0	295.5	0	0.018	35	0.1869	0	1.493	3	0.000709	1.83	0.000032	21.9	0.000269	0.37	0.00165	24.9	0.01211	0.1	0	0	0.43	2	0	0	0	0
07C2017	1.06	0	295.5	0	0.018	35	0.1869	0	1.493	3	0.000709	1.83	0.000032	21.9	0.000269	0.37	0.00165	24.9	0.01211	0.1	0	0	0.43	2	0	0	0	0
07C2019	1.15	0	295.5	0	0.018	35	0.1869	0	1.493	3	0.000709	1.83	0.000032	21.9	0.000269	0.37	0.00165	24.9	0.01211	0.1	0	0	0.43	2	0	0	0	0
07C2020	1.27	0	295.5	0	0.018	35	0.1869	0	1.493	3	0.000709	1.83	0.000032	21.9	0.000269	0.37	0.00165	24.9	0.01211	0.1	0	0	0.43	2	0	0	0	0
07C2021	1.44	0	295.5	0	0.018	35	0.1869	0	1.493	3	0.000709	1.83	0.000032	21.9	0.000269	0.37	0.00165	24.9	0.01211	0.1	0	0	0.43	2	0	0	0	0
07C2022	1.59	0	295.5	0	0.018	35	0.1869	0	1.493	3	0.000709	1.83	0.000032	21.9	0.000269	0.37	0.00165	24.9	0.01211	0.1	0	0	0.43	2	0	0	0	0
07C2024	1.77	0	295.5	0	0.018	35	0.1869	0	1.493	3	0.000709	1.83	0.000032	21.9	0.000269	0.37	0.00165	24.9	0.01211	0.1	0	0	0.43	2	0	0	0	0
07C2025	2.00	0	295.5	0	0.018	35	0.1869	0	1.493	3	0.000709	1.83	0.000032	21.9	0.000269	0.37	0.00165	24.9	0.01211	0.1	0	0	0.43	2	0	0	0	0
07C2026	2.39	0	295.5	0	0.018	35	0.1869	0	1.493	3	0.000709	1.83	0.000032	21.9	0.000269	0.37	0.00165	24.9	0.01211	0.1	0	0	0.43	2	0	0	0	0
07C2027	2.83	0	295.5	0	0.018	35	0.1869	0	1.493	3	0.000709	1.83	0.000032	21.9	0.000269	0.37	0.00165	24.9	0.01211	0.1	0	0	0.43	2	0	0	0	0
07C2029	3.30	0	295.5	0	0.018	35	0.1869	0	1.493	3	0.000709	1.83	0.000032	21.9	0.000269	0.37	0.00165	24.9	0.01211	0.1	0	0	0.43	2	0	0	0	0
07C2030	4.04	0	295.5	0	0.018	35	0.1869	0	1.493	3	0.000709	1.83	0.000032	21.9	0.000269	0.37	0.00165	24.9	0.01211	0.1	0	0	0.43	2	0	0	0	0
07C2031	4.86	0	295.5	0	0.018	35	0.1869	0	1.493	3	0.000709	1.83	0.000032	21.9	0.000269	0.37	0.00165	24.9	0.01211	0.1	0	0	0.43	2	0	0	0	0

07C1998.AGE >>> FAV-2 4D8-06 >>> SAMOA PROJECT



Ar-Ages in Ma

WEIGHTED PLATEAU

13.15 ± 0.16

TOTAL FUSION

12.79 ± 0.12

NORMAL ISOCHRON

14.98 ± 0.89

INVERSE ISOCHRON

15.79 ± 1.73

MSWD (PROBABILITY)

2.83 (1%)

Sample Info

Groundmass 210-300µm

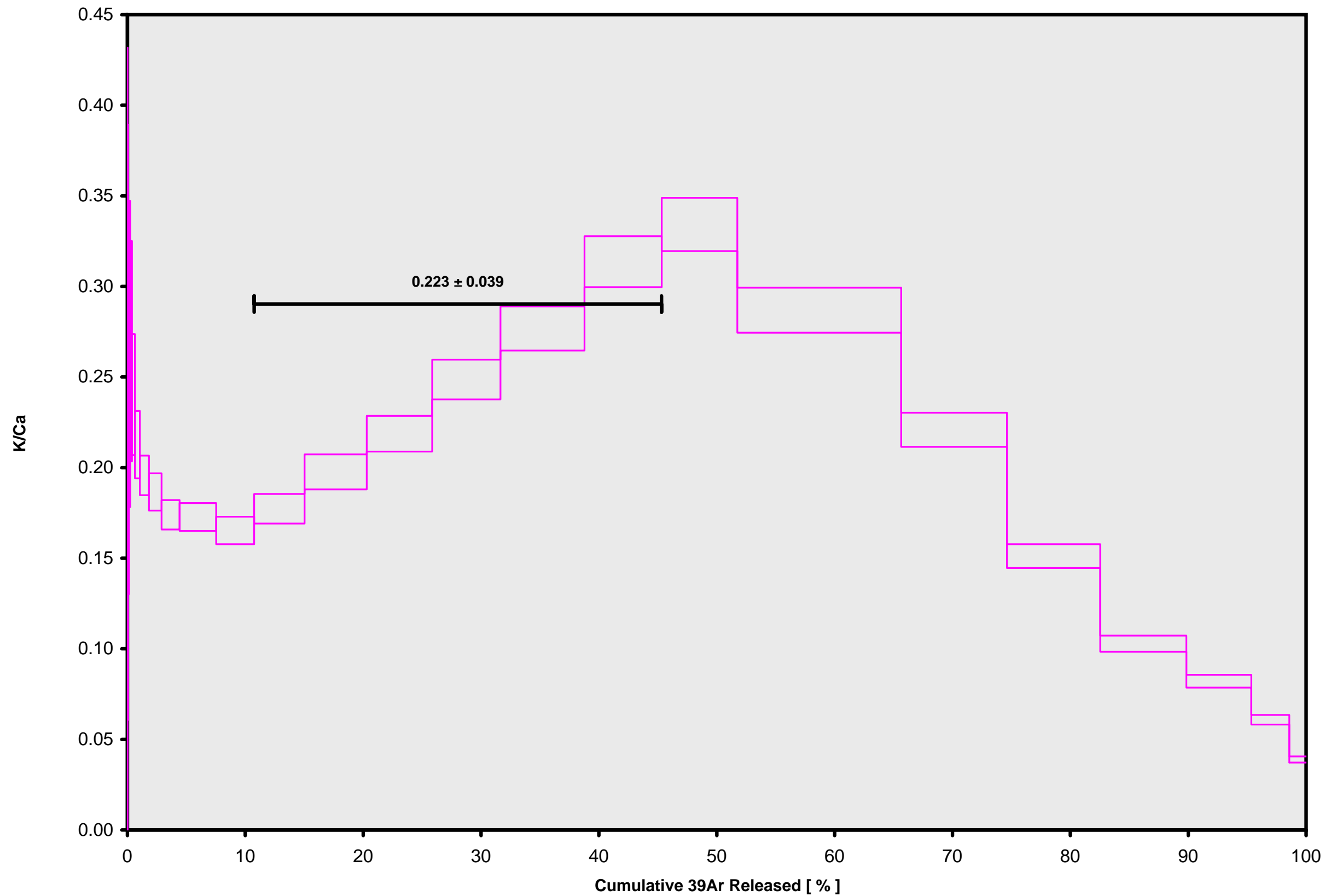
Fa'avevesi, Samoa

Jamie Russell

IRR = OSU4D06

J = 0.00155710 ± 0.00000405

07C1998.AGE >>> FAV-2 4D8-06 >>> SAMOA PROJECT



Ar-Ages in Ma

WEIGHTED PLATEAU

13.15 ± 0.16

TOTAL FUSION

12.79 ± 0.12

NORMAL ISOCHRON

14.98 ± 0.89

INVERSE ISOCHRON

15.79 ± 1.73

Sample Info

Groundmass 210-300µm

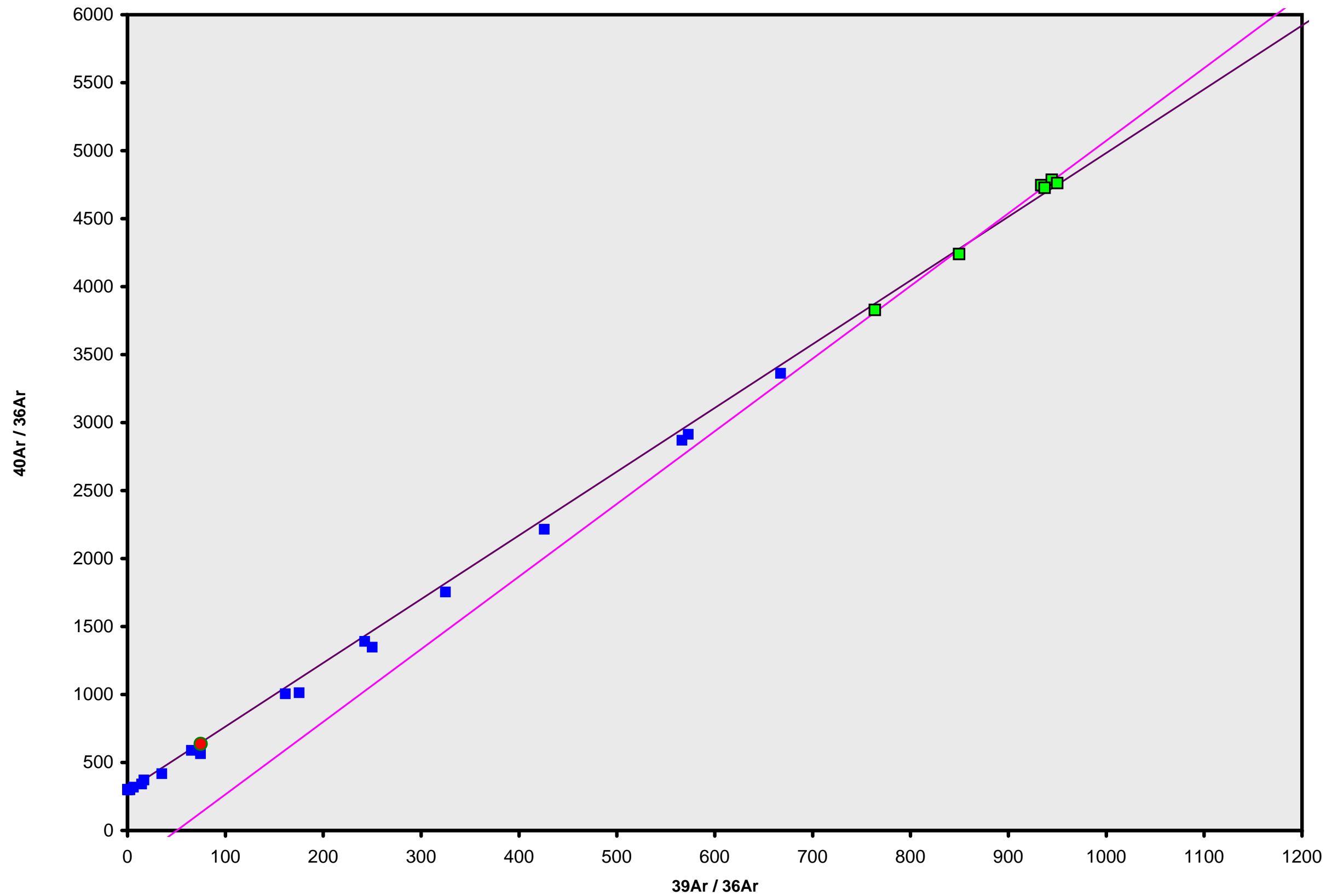
Fa'avevesi, Samoa

Jamie Russell

IRR = OSU4D06

J = 0.00155710 ± 0.00000405

07C1998.AGE >>> FAV-2 4D8-06 >>> SAMOA PROJECT



Ar-Ages in Ma

WEIGHTED PLATEAU

13.15 ± 0.16

TOTAL FUSION

12.79 ± 0.12

NORMAL ISOCHRON

14.98 ± 0.89

INVERSE ISOCHRON

15.79 ± 1.73

MSWD (PROBABILITY)

0.98 (42%)

40AR/36AR INTERCEPT

-269.8 ± 273.7 (NEG)

Sample Info

Groundmass 210-300µm

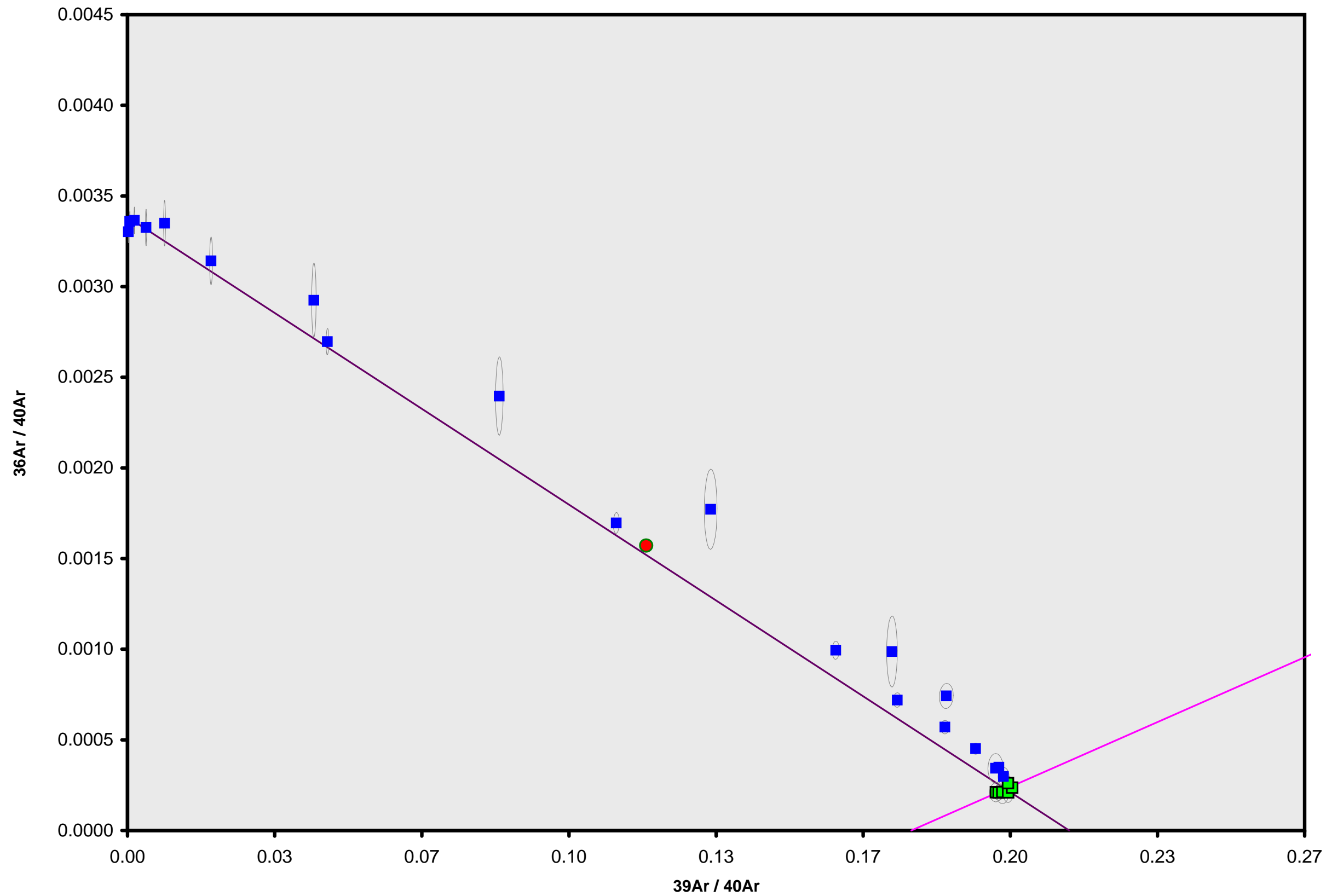
Fa'avevesi, Samoa

Jamie Russell

IRR = OSU4D06

J = 0.00155710 ± 0.00000405

07C1998.AGE >>> FAV-2 4D8-06 >>> SAMOA PROJECT



Ar-Ages in Ma

WEIGHTED PLATEAU

13.15 ± 0.16

TOTAL FUSION

12.79 ± 0.12

NORMAL ISOCHRON

14.98 ± 0.89

INVERSE ISOCHRON

15.79 ± 1.73

MSWD (PROBABILITY)

0.73 (57%)

SPREADING FACTOR

2.1%

40AR/36AR INTERCEPT

-525.1 ± 779.9 (NEG)

Sample Info

Groundmass 210-300 μm

Fa'avevesi, Samoa

Jamie Russell

IRR = OSU4D06

$J = 0.00155710 \pm 0.00000405$