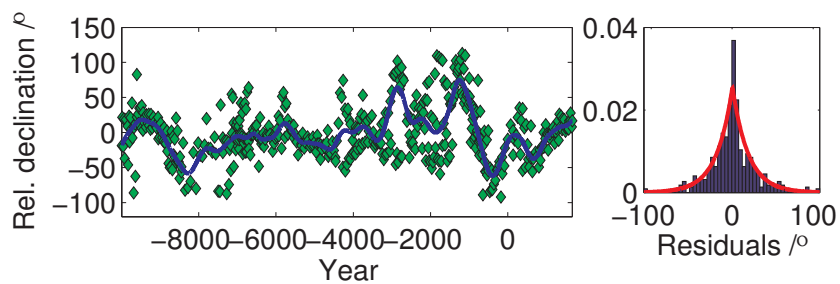
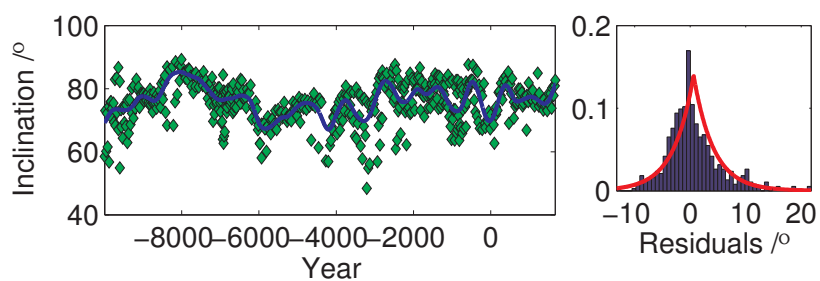


## LAM – Lake Lama, Russia



ndat = 512  
 nspl = 237  
 sigma1 = 31.81  
 sigma2 = 30.73  
 norm =  $3.4e-03$   
 CV score = 20.00  
 width = 170.1  
 lambda =  $2.9e+05$   
 constrained by= 169.5



ndat = 547  
 nspl = 237  
 sigma1 = 5.62  
 sigma2 = 5.29  
 norm =  $1.8e-04$   
 CV score = 3.60  
 width = 173.5  
 lambda =  $1.2e+06$   
 constrained by= 169.5