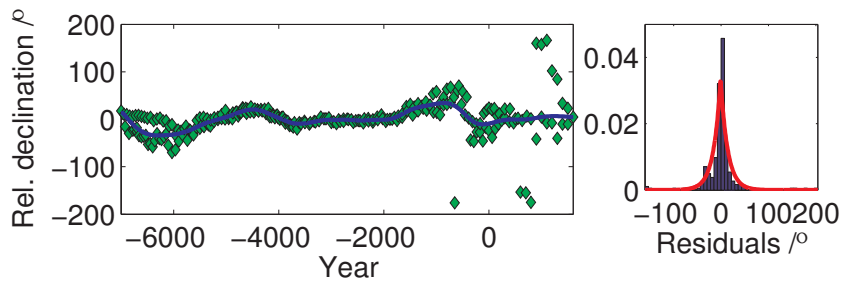
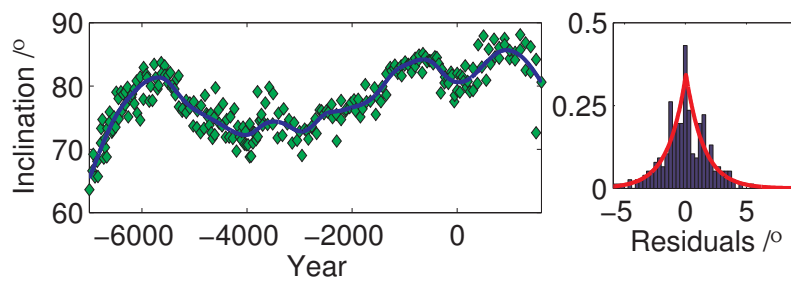


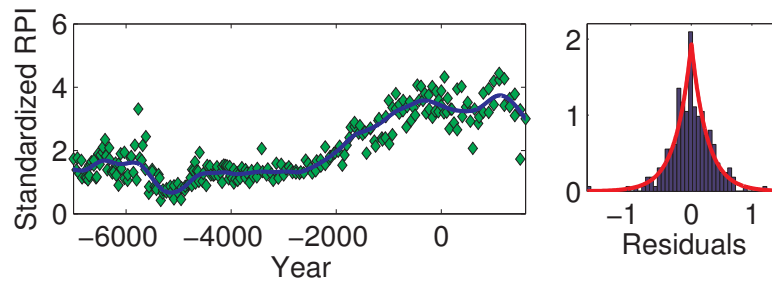
SAR – Sarsjön, Sweden



ndat = 252
 nspl = 175
 sigma1 = 24.46
 sigma2 = 34.94
 norm = $1.7e-04$
 CV score = 15.00
 width = 252.9
 lambda = $1.8e+06$
 constrained by= 250.0



ndat = 252
 nspl = 175
 sigma1 = 2.35
 sigma2 = 2.08
 norm = $4.0e-06$
 CV score = 1.50
 width = 250.4
 lambda = $1.2e+07$
 constrained by= 250.0



ndat = 252
 nspl = 175
 sigma1 = 0.42
 sigma2 = 0.38
 norm = $1.3e-07$
 CV score = 0.27
 width = 250.6
 lambda = $4.7e+07$
 constrained by= 250.0