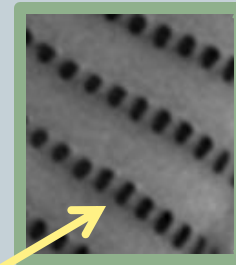
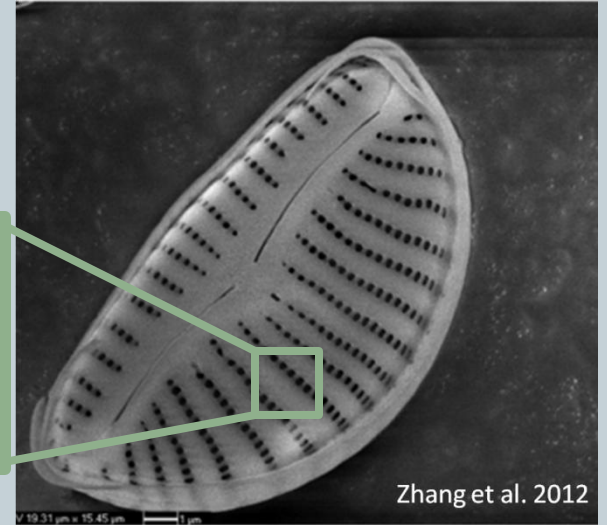
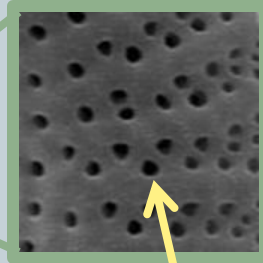
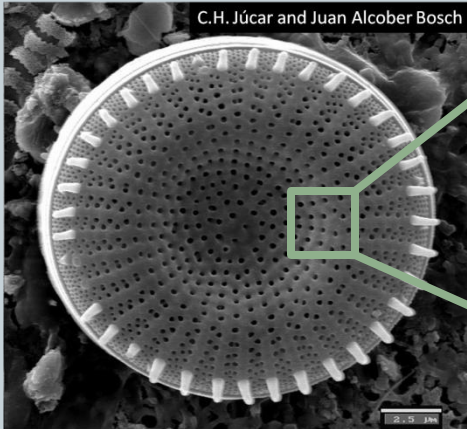
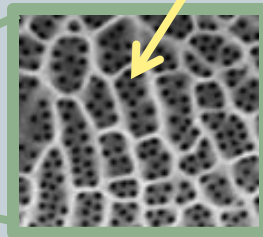
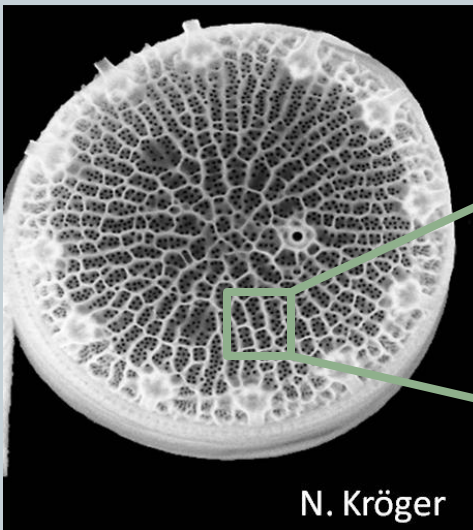


# Frustule features: Pores



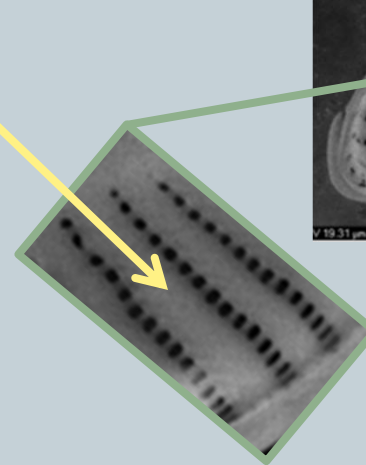
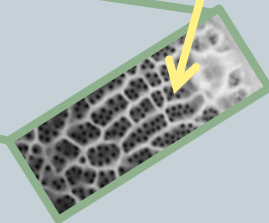
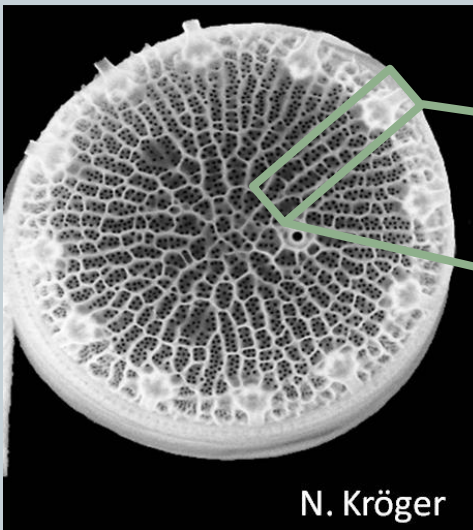
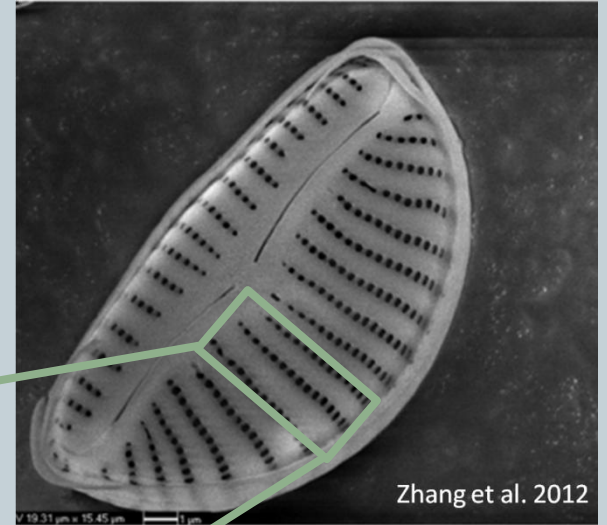
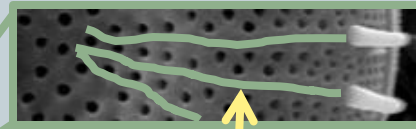
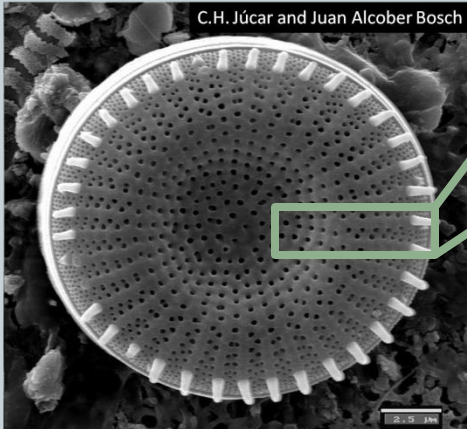
Pores



## Cellular Functions

1. Allow in nutrients
2. Protects from viruses

# Frustule features: Ribs



Ribs

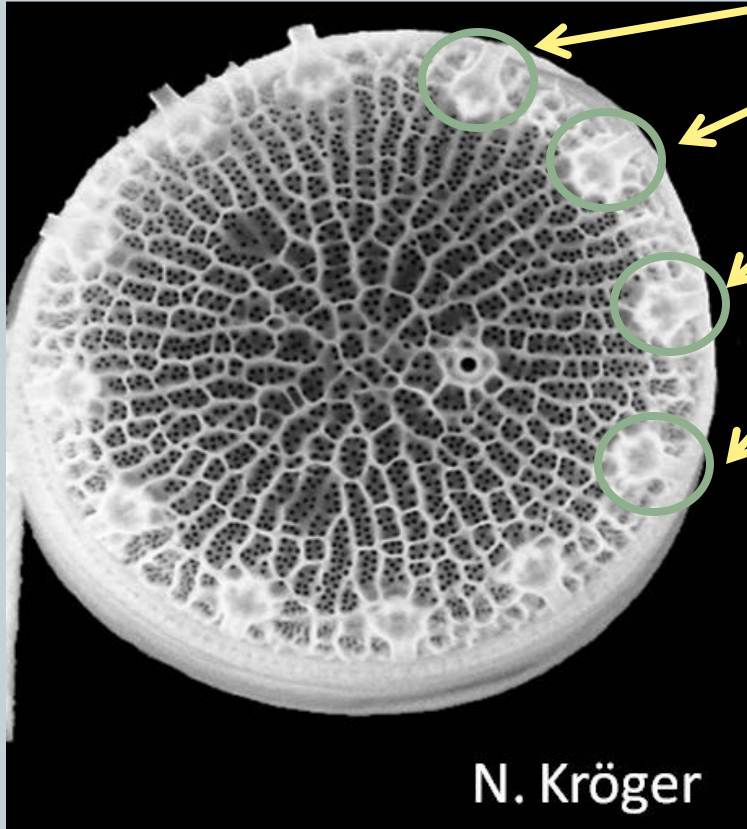
## Cellular Functions

1. Provides structural support

# Frustule features: Portula



Portula



## Cellular Function

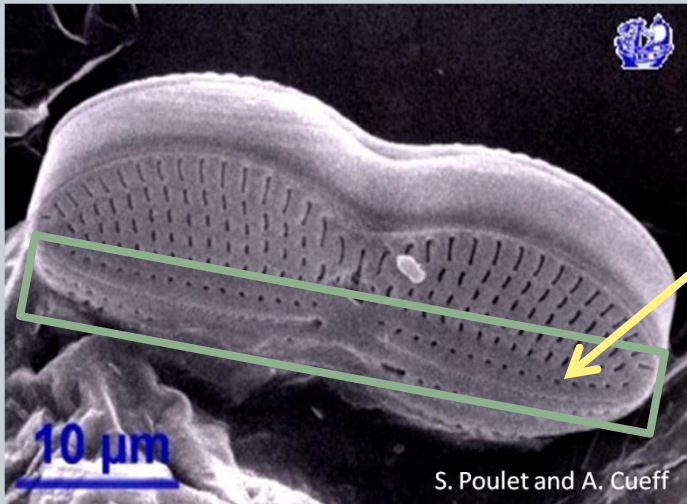
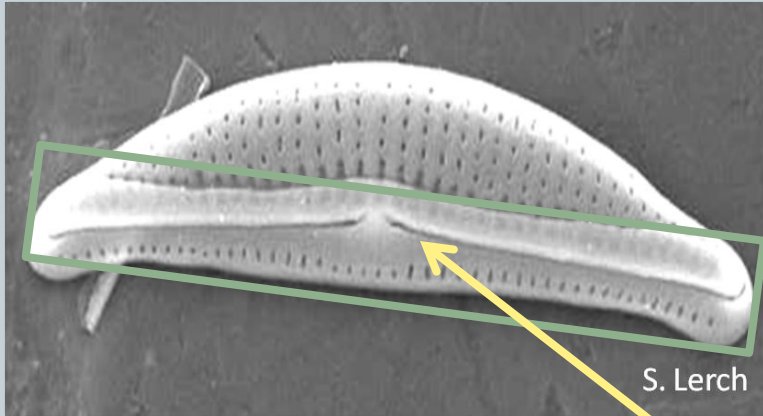
1. Secretes chitin, helping the diatom float

# Frustule features: Raphe

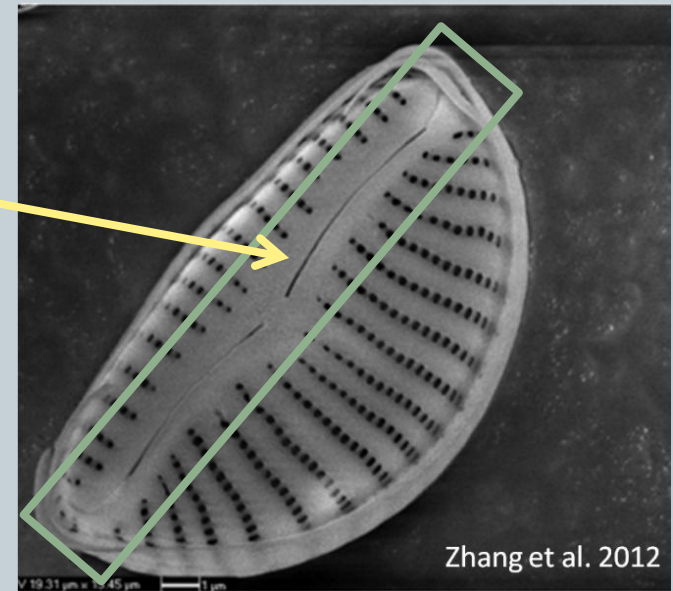


## Cellular Function

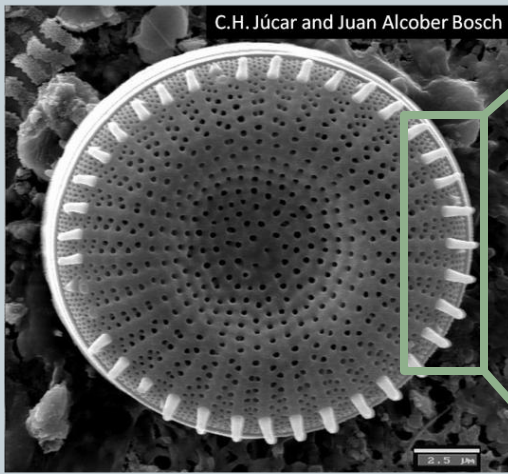
1. Secretes mucus allowing the diatom to move



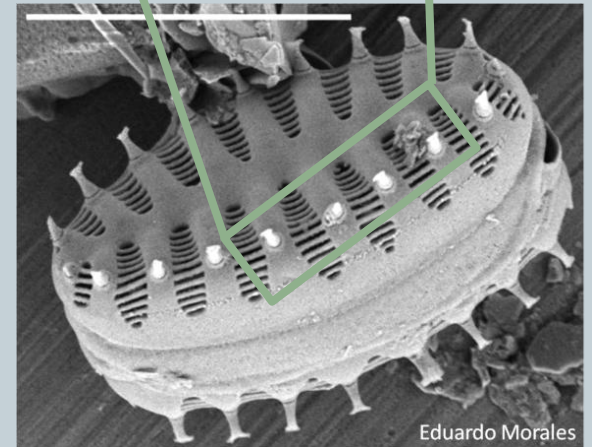
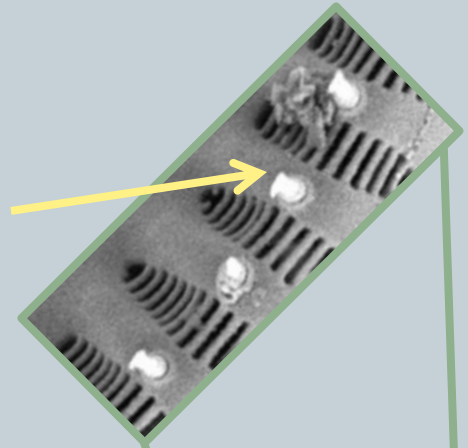
Raphe



# Frustule features: Spines



Spines



## Cellular Functions

1. Defend against herbivores
2. Helps diatoms float