

Relative Abundances		36Ar [fA]	%1σ	37Ar [fA]	%1σ	38Ar [fA]	%1σ	39Ar [fA]	%1σ	40Ar [fA]	%1σ	40(r)/39(k) ± 2σ	Age ± 2σ (Ka)	40Ar(r) (%)	39Ar(k) (%)	K/Ca ± 2σ
13D08072	1.8 %	3.7694469	0.283	34.0011	5.479	0.828359	4.833	5.7875	0.634	1145.0139	0.011	5.86357 ± 1.09871	16539.1 ± 3084.9	2.95	0.30	0.073 ± 0.008
13D08074	2.0 %	1.2933250	0.329	22.8504	7.583	0.371265	10.463	5.4275	0.665	401.1802	0.028	3.84063 ± 0.47242	10850.2 ± 1330.6	5.18	0.28	0.102 ± 0.016
13D08075	2.2 %	0.4655559	0.473	13.3463	14.670	0.117380	31.170	4.0850	0.841	144.9606	0.076	2.06663 ± 0.33450	5846.5 ± 944.8	5.81	0.21	0.131 ± 0.039
13D08076	2.4 %	0.2431709	0.647	17.3272	10.550	0.144573	26.422	5.6620	0.636	77.0416	0.138	1.15557 ± 0.17697	3271.5 ± 500.6	8.47	0.29	0.140 ± 0.030
13D08078	2.7 %	0.1616849	0.831	20.7486	8.591	0.072059	53.078	9.5040	0.393	53.7624	0.198	0.79884 ± 0.09176	2262.2 ± 259.7	14.10	0.50	0.197 ± 0.034
13D08079	3.0 %	0.1106362	1.031	35.4176	5.185	0.147416	25.957	16.2972	0.231	39.8739	0.266	0.60871 ± 0.04702	1724.0 ± 133.1	24.84	0.85	0.198 ± 0.021
13D08080	3.3 %	0.0807906	1.246	44.3534	4.034	0.267715	13.910	22.4136	0.180	30.8759	0.345	0.46494 ± 0.03095	1317.0 ± 87.6	33.71	1.17	0.217 ± 0.018
13D08082	3.6 %	0.0627688	1.583	50.2054	3.748	0.301139	12.330	31.3471	0.136	27.6977	0.388	0.41454 ± 0.02213	1174.3 ± 62.7	46.87	1.63	0.268 ± 0.020
13D08083	3.7 %	0.0451393	2.113	46.4711	4.022	0.317173	12.165	29.9013	0.142	21.7217	0.488	0.39926 ± 0.02247	1131.0 ± 63.6	54.90	1.56	0.276 ± 0.022
13D08084	3.9 %	0.0388720	2.250	46.9909	3.940	0.350410	10.938	31.0520	0.134	19.5961	0.543	0.37680 ± 0.02035	1067.4 ± 57.6	59.65	1.62	0.284 ± 0.022
13D08086	4.2 %	0.0458848	2.043	69.7440	2.696	0.534103	6.812	46.6674	0.104	25.1371	0.423	0.36225 ± 0.01425	1026.2 ± 40.4	67.18	2.43	0.287 ± 0.016
13D08087	4.5 %	0.0441688	2.021	76.3447	2.418	0.637067	6.018	52.0142	0.094	26.0224	0.409	0.36141 ± 0.01232	1023.8 ± 34.9	72.17	2.71	0.293 ± 0.014
13D08088	4.7 %	0.0456994	2.052	85.1923	2.176	0.646155	5.630	56.5037	0.092	27.1054	0.393	0.35590 ± 0.01174	1008.2 ± 33.3	74.12	2.94	0.285 ± 0.012
13D08090	4.8 %	0.0452825	2.096	88.2252	2.125	0.676193	5.457	61.0369	0.090	27.8792	0.383	0.34780 ± 0.01099	985.2 ± 31.1	76.07	3.18	0.297 ± 0.013
13D08091	5.1 %	0.0488880	1.999	102.0763	1.852	0.791368	4.774	70.3791	0.083	31.0898	0.342	0.34714 ± 0.00975	983.4 ± 27.6	78.51	3.67	0.296 ± 0.011
13D08092	5.4 %	0.0526608	1.813	111.6333	1.806	0.862718	4.387	78.7026	0.082	33.6457	0.314	0.33790 ± 0.00869	957.2 ± 24.6	78.97	4.10	0.303 ± 0.011
13D08094	5.7 %	0.0531102	1.792	119.2740	1.660	0.931265	3.955	83.9050	0.078	34.9591	0.304	0.33797 ± 0.00811	957.4 ± 23.0	81.04	4.37	0.302 ± 0.010
13D08095	5.9 %	0.0557425	1.751	122.0627	1.641	0.947465	4.015	88.9765	0.077	36.5822	0.292	0.33046 ± 0.00780	936.1 ± 22.1	80.30	4.64	0.313 ± 0.010
13D08096	6.1 %	0.0553656	1.758	120.1813	1.593	0.984939	4.184	87.1148	0.079	35.4257	0.299	0.32389 ± 0.00787	917.6 ± 22.3	79.57	4.54	0.311 ± 0.010
13D08098	6.5 %	0.0571724	1.673	133.2847	1.555	1.049270	3.640	94.1049	0.077	37.7579	0.283	0.32965 ± 0.00733	933.9 ± 20.8	82.08	4.90	0.303 ± 0.009
13D08099	6.9 %	0.0689159	1.495	161.4823	1.271	1.292050	2.889	113.1365	0.074	45.2401	0.235	0.32869 ± 0.00641	931.1 ± 18.2	82.12	5.90	0.301 ± 0.008
13D08100	7.1 %	0.0602077	1.642	135.0622	1.420	1.101215	3.650	95.8957	0.077	38.6358	0.275	0.32469 ± 0.00724	919.8 ± 20.5	80.51	5.00	0.305 ± 0.009
13D08102	7.3 %	0.0484143	1.916	109.3057	1.732	0.887237	4.370	75.9739	0.082	30.5184	0.348	0.32310 ± 0.00871	915.3 ± 24.7	80.36	3.96	0.299 ± 0.010
13D08103	7.8 %	0.0554977	1.734	124.9597	1.580	0.965097	3.891	84.1175	0.076	34.3010	0.310	0.32622 ± 0.00814	924.1 ± 23.1	79.92	4.38	0.289 ± 0.009
13D08104	8.1 %	0.0559127	1.699	121.2245	1.592	0.958967	4.286	77.8263	0.080	32.2845	0.328	0.32164 ± 0.00868	911.2 ± 24.6	77.45	4.06	0.276 ± 0.009
13D08106	8.3 %	0.0448362	2.077	95.1272	2.016	0.738110	5.092	60.7322	0.089	25.6268	0.415	0.32359 ± 0.01095	916.7 ± 31.0	76.61	3.16	0.274 ± 0.011
13D08107	8.8 %	0.0522614	1.775	106.1495	1.788	0.703389	5.308	61.4293	0.089	27.1889	0.390	0.32374 ± 0.01077	917.1 ± 30.5	73.06	3.20	0.249 ± 0.009
13D08108	9.3 %	0.0567735	1.688	108.9309	1.757	0.716756	5.248	58.8285	0.090	27.5430	0.386	0.32531 ± 0.01153	921.6 ± 32.6	69.40	3.07	0.232 ± 0.008
13D08110	9.9 %	0.0646382	1.613	117.7101	1.620	0.732923	5.084	56.1002	0.093	27.9386	0.378	0.31936 ± 0.01282	904.7 ± 36.3	64.04	2.92	0.205 ± 0.007
13D08111	10.5 %	0.0654820	1.601	114.1963	1.680	0.619884	6.114	49.4468	0.101	26.6224	0.401	0.32553 ± 0.01465	922.2 ± 41.5	60.37	2.58	0.186 ± 0.006
13D08112	11.2 %	0.0832878	1.282	139.4030	1.457	0.621519	6.173	48.5683	0.099	29.4077	0.359	0.32146 ± 0.01526	910.7 ± 43.2	52.99	2.53	0.150 ± 0.004
13D08114	11.9 %	0.0813713	1.275	133.1689	1.471	0.521784	7.546	40.2411	0.113	27.0001	0.391	0.33081 ± 0.01792	937.1 ± 50.8	49.19	2.09	0.130 ± 0.004
13D08115	12.8 %	0.1151284	1.006	191.4076	1.125	0.523378	7.043	39.8852	0.112	31.3786	0.341	0.30864 ± 0.02000	874.3 ± 56.6	39.10	2.07	0.089 ± 0.002
13D08116	13.9 %	0.1358651	0.935	228.2488	0.996	0.543237	6.835	37.4087	0.120	33.9038	0.313	0.31085 ± 0.02311	880.6 ± 65.5	34.16	1.94	0.070 ± 0.001
13D08118	15.2 %	0.1757471	0.781	320.5982	0.813	0.555895	6.869	35.5754	0.123	38.3998	0.276	0.32716 ± 0.02651	926.8 ± 75.1	30.13	1.84	0.047 ± 0.001
13D08119	16.7 %	0.2122241	0.649	394.7986	0.728	0.487497	8.182	31.0358	0.136	40.5487	0.265	0.28576 ± 0.03122	809.5 ± 88.4	21.68	1.61	0.034 ± 0.000
13D08120	18.2 %	0.2283154	0.655	434.4866	0.722	0.423661	9.135	26.8295	0.150	41.4638	0.258	0.30488 ± 0.03920	863.7 ± 111.0	19.51	1.38	0.026 ± 0.000
13D08122	19.7 %	0.2706415	0.543	531.8119	0.670	0.450594	8.123	25.9924	0.159	46.1146	0.232	0.30813 ± 0.04150	872.9 ± 117.5	17.13	1.34	0.021 ± 0.000
13D08124	21.2 %	0.2696737	0.614	544.3469	0.654	0.382016	10.117	20.7056	0.191	42.7639	0.251	0.28714 ± 0.05682	813.5 ± 160.9	13.66	1.06	0.016 ± 0.000
Σ		8.9205593	0.151	5472.1492	0.243	24.203236	0.983	1920.6113	0.017	2924.2089	0.023					

Information on Analysis and Constants Used in Calculations

Project = **BALBAS (13-19)**
Sample = **44A-ARGON-2**
Material = **Groundmass**
Location = **Floreana Island**
Region = **Galapagos**
Analyst = **Dan Miggins**
Irradiation = **13-OSU-05**
Position = **X: 0 | Y: 0 | Z/H: 60.7 mm**
FCT-3 Age = **28.201 ± 0.023 Ma**
FCT-3 Reference = **Kuiper (2008)**
FCT-3 40Ar/39Ar Ratio = **10.03039 ± 0.01625**
FCT-3 J-value = **0.00156698 ± 0.00000254**
Air Shot 40Ar/36Ar = **302.7440 ± 0.2785**
Air Shot MDF = **0.99401032 ± 0.00062117 (LIN)**
Experiment Type = **Incremental Heating**
Extraction Method = **Bulk Laser Heating**
Heating = **77 sec**
Isolation = **5.52 min**
Instrument = **ARGUS-VI-D**
Preferred Age = **Plateau Age**
Age Classification = **Eruption Age**
IGSN = **IEKK1-44A-ARGON-2A**
Rock Class = **Igneous>Volcanic>Mafic**
Lithology = **Basalt**
Lat-Lon = **1°16.4'S - 90°29.3'W**

Age Equations = **Min et al. (2000)**
Negative Intensities = **Allowed**
Collector Calibrations = **40Ar 36Ar**
Decay 40K = **5.530 ± 0.048 E-10 1/a**
Decay 39Ar = **2.940 ± 0.016 E-07 1/h**
Decay 37Ar = **8.230 ± 0.012 E-04 1/h**
Decay 36Cl = **2.257 ± 0.015 E-06 1/a**
Decay 40K(EC,β⁺) = **0.580 ± 0.009 E-10 1/a**
Decay 40K(β⁻) = **4.950 ± 0.043 E-10 1/a**
Atmospheric 40/36(a) = **295.50**
Atmospheric 38/36(a) = **0.1869**
Production 39/37(ca) = **0.0006756 ± 0.0000089**
Production 38/37(ca) = **0.0000718 ± 0.0000092**
Production 36/37(ca) = **0.0002663 ± 0.0000004**
Production 40/39(k) = **0.003823 ± 0.000102**
Production 38/39(k) = **0.012031 ± 0.000019**
Production 36/38(cl) = **262.80 ± 1.71**
Scaling Ratio K/Ca = **0.430**
Abundance Ratio 40K/K = **1.1700 ± 0.0100 E-04**
Atomic Weight K = **39.0983 ± 0.0001 g**

Results	40(a)/36(a) ± 2σ	40(r)/39(k) ± 2σ	Age ± 2σ (Ka)	MSWD	39Ar(k) (%n)	K/Ca ± 2σ
Age Plateau		0.32746 ± 0.00254 ± 0.78%	927.7 ± 7.8 ± 0.84%	1.34	65.40	0.217 ± 0.036
			Full External Error ± 22.3	1.71	2σ Confidence Limit	
			Analytical Error ± 7.2	1.1579	Error Magnification	
Total Fusion Age		0.37119 ± 0.00435 ± 1.17%	1051.5 ± 12.8 ± 1.22%		39	0.151 ± 0.001
			Full External Error ± 27.0			
			Analytical Error ± 12.3			
Normal Isochron	291.57 ± 14.41 ± 4.94%	0.32802 ± 0.00527 ± 1.61%	929.2 ± 15.2 ± 1.64%	1.25	65.40	
			Full External Error ± 25.9	1.73	2σ Confidence Limit	
			Analytical Error ± 14.9	1.1195	Error Magnification	
				57	Number of Iterations	
				0.0000032245	Convergence	
Inverse Isochron	291.32 ± 15.26 ± 5.24%	0.32882 ± 0.00550 ± 1.67%	931.5 ± 15.9 ± 1.70%	1.41	65.40	
			Full External Error ± 26.3	1.73	2σ Confidence Limit	
			Analytical Error ± 15.6	1.1857	Error Magnification	
Notes				3	Number of Iterations	
A reliable plateau with low and high temp recoil.				0.0027870176	Convergence	
				34%	Spreading Factor	

Incremental Heating		36Ar(a) [fA]	37Ar(ca) [fA]	38Ar(cl) [fA]	39Ar(k) [fA]	40Ar(r) [fA]	Age ± 2σ (Ka)	40Ar(r) (%)	39Ar(k) (%)	K/Ca ± 2σ
13D08072	1.8 %	3.7603759	34.0011	0.0537500	5.7645	33.80076	16539.1 ± 3084.9	2.95	0.30	0.073 ± 0.008
13D08074	2.0 %	1.2872203	22.8504	0.0639301	5.4121	20.78588	10850.2 ± 1330.6	5.18	0.28	0.102 ± 0.016
13D08075	2.2 %	0.4620018	13.3463	0.0000000	4.0760	8.42353	5846.5 ± 944.8	5.81	0.21	0.131 ± 0.039
13D08076	2.4 %	0.2385472	17.3272	0.0307662	5.6502	6.52927	3271.5 ± 500.6	8.47	0.29	0.140 ± 0.030
13D08078	2.7 %	0.1561595	20.7486	0.0000000	9.4900	7.58103	2262.2 ± 259.7	14.10	0.50	0.197 ± 0.034
13D08079	3.0 %	0.1012045	35.4176	0.0000000	16.2733	9.90576	1724.0 ± 133.1	24.84	0.85	0.198 ± 0.021
13D08080	3.3 %	0.0689793	44.3534	0.0000000	22.3837	10.40695	1317.0 ± 87.6	33.71	1.17	0.217 ± 0.018
13D08082	3.6 %	0.0493991	50.2054	0.0000000	31.3132	12.98051	1174.3 ± 62.7	46.87	1.63	0.268 ± 0.020
13D08083	3.7 %	0.0327641	46.4711	0.0000000	29.8699	11.92573	1131.0 ± 63.6	54.90	1.56	0.276 ± 0.022
13D08084	3.9 %	0.0263583	46.9909	0.0000000	31.0203	11.68860	1067.4 ± 57.6	59.65	1.62	0.284 ± 0.022
13D08086	4.2 %	0.0273120	69.7440	0.0000000	46.6203	16.88820	1026.2 ± 40.4	67.18	2.43	0.287 ± 0.016
13D08087	4.5 %	0.0238376	76.3447	0.0019680	51.9626	18.77974	1023.8 ± 34.9	72.17	2.71	0.293 ± 0.014
13D08088	4.7 %	0.0230127	85.1923	0.0000000	56.4462	20.08933	1008.2 ± 33.3	74.12	2.94	0.285 ± 0.012
13D08090	4.8 %	0.0217881	88.2252	0.0000000	60.9773	21.20767	985.2 ± 31.1	76.07	3.18	0.297 ± 0.013
13D08091	5.1 %	0.0217051	102.0763	0.0000000	70.3101	24.40719	983.4 ± 27.6	78.51	3.67	0.296 ± 0.011
13D08092	5.4 %	✓ 0.0229328	111.6333	0.0000000	78.6272	26.56845	957.2 ± 24.6	78.97	4.10	0.303 ± 0.011
13D08094	5.7 %	✓ 0.0213476	119.2740	0.0000000	83.8244	28.33047	957.4 ± 23.0	81.04	4.37	0.302 ± 0.010
13D08095	5.9 %	✓ 0.0232372	122.0627	0.0000000	88.8940	29.37574	936.1 ± 22.1	80.30	4.64	0.313 ± 0.010
13D08096	6.1 %	✓ 0.0233613	120.1813	0.0000000	87.0336	28.18969	917.6 ± 22.3	79.57	4.54	0.311 ± 0.010
13D08098	6.5 %	✓ 0.0216787	133.2847	0.0000000	94.0149	30.99238	933.9 ± 20.8	82.08	4.90	0.303 ± 0.009
13D08099	6.9 %	✓ 0.0259131	161.4823	0.0000000	113.0274	37.15068	931.1 ± 18.2	82.12	5.90	0.301 ± 0.008
13D08100	7.1 %	✓ 0.0242406	135.0622	0.0000000	95.8044	31.10645	919.8 ± 20.5	80.51	5.00	0.305 ± 0.009
13D08102	7.3 %	✓ 0.0193062	109.3057	0.0000000	75.9001	24.52321	915.3 ± 24.7	80.36	3.96	0.299 ± 0.010
13D08103	7.8 %	✓ 0.0222209	124.9597	0.0000000	84.0331	27.41344	924.1 ± 23.1	79.92	4.38	0.289 ± 0.009
13D08104	8.1 %	✓ 0.0236273	121.2245	0.0105045	77.7444	25.00543	911.2 ± 24.6	77.45	4.06	0.276 ± 0.009
13D08106	8.3 %	✓ 0.0195038	95.1272	0.0000000	60.6680	19.63152	916.7 ± 31.0	76.61	3.16	0.274 ± 0.011
13D08107	8.8 %	✓ 0.0239938	106.1495	0.0000000	61.3576	19.86413	917.1 ± 30.5	73.06	3.20	0.249 ± 0.009
13D08108	9.3 %	✓ 0.0277652	108.9309	0.0000000	58.7549	19.11379	921.6 ± 32.6	69.40	3.07	0.232 ± 0.008
13D08110	9.9 %	✓ 0.0332784	117.7101	0.0442667	56.0207	17.89062	904.7 ± 36.3	64.04	2.92	0.205 ± 0.007
13D08111	10.5 %	✓ 0.0350681	114.1963	0.0111635	49.3697	16.07109	922.2 ± 41.5	60.37	2.58	0.186 ± 0.006
13D08112	11.2 %	✓ 0.0461588	139.4030	0.0196905	48.4742	15.58246	910.7 ± 43.2	52.99	2.53	0.150 ± 0.004
13D08114	11.9 %	✓ 0.0459020	133.1689	0.0205848	40.1512	13.28251	937.1 ± 50.8	49.19	2.09	0.130 ± 0.004
13D08115	12.8 %	0.0641506	191.4076	0.0193414	39.7559	12.27015	874.3 ± 56.6	39.10	2.07	0.089 ± 0.002
13D08116	13.9 %	0.0750625	228.2488	0.0646103	37.2545	11.58045	880.6 ± 65.5	34.16	1.94	0.070 ± 0.001
13D08118	15.2 %	0.0903439	320.5982	0.0905883	35.3588	11.56803	926.8 ± 75.1	30.13	1.84	0.047 ± 0.001
13D08119	16.7 %	0.1070680	394.7986	0.0689576	30.7690	8.79247	809.5 ± 88.4	21.68	1.61	0.034 ± 0.000
13D08120	18.2 %	0.1125955	434.4866	0.0521662	26.5360	8.09034	863.7 ± 111.0	19.51	1.38	0.026 ± 0.000
13D08122	19.7 %	0.1289954	531.8119	0.0799078	25.6331	7.89843	872.9 ± 117.5	17.13	1.34	0.021 ± 0.000
13D08124	21.2 %	0.1246910	544.3469	0.0749431	20.3378	5.83991	813.5 ± 160.9	13.66	1.06	0.016 ± 0.000
Σ		7.4631084	5472.1492	0.7071390	1916.9143	711.53199				

Information on Analysis	Results	40(r)/39(k) ± 2σ	Age ± 2σ (Ka)	MSWD	39Ar(k) (%n)	K/Ca ± 2σ
Project = BALBAS (13-19) Sample = 44A-ARGON-2 Material = Groundmass Location = Floreana Island Region = Galapagos Analyst = Dan Miggins Irradiation = 13-OSU-05 J = 0.00156698 ± 0.00000254 FCT-3 = 28.201 ± 0.023 Ma	Age Plateau	0.32746 ± 0.00254 ± 0.78%	927.7 ± 7.8 ± 0.84%	1.34 16%	65.40 17	0.217 ± 0.036
			Full External Error ± 22.3 Analytical Error ± 7.2	1.71 1.1579	2σ Confidence Limit Error Magnification	
	Total Fusion Age	0.37119 ± 0.00435 ± 1.17%	1051.5 ± 12.8 ± 1.22%		39	0.151 ± 0.001
			Full External Error ± 27.0 Analytical Error ± 12.3			

Normal Isochron		39(k)/36(a) ± 2σ	40(a+r)/36(a) ± 2σ	r.i.
13D08072	1.8 %	1.53 ± 0.02	304.49 ± 1.73	0.4069
13D08074	2.0 %	4.20 ± 0.06	311.65 ± 2.08	0.4449
13D08075	2.2 %	8.82 ± 0.17	313.73 ± 3.11	0.4963
13D08076	2.4 %	23.69 ± 0.45	322.87 ± 4.55	0.7203
13D08078	2.7 %	60.77 ± 1.21	344.05 ± 6.43	0.8972
13D08079	3.0 %	160.80 ± 4.01	393.38 ± 9.88	0.9602
13D08080	3.3 %	324.50 ± 10.54	446.37 ± 14.74	0.9718
13D08082	3.6 %	633.88 ± 28.62	558.27 ± 25.53	0.9836
13D08083	3.7 %	911.67 ± 59.93	659.49 ± 43.79	0.9881
13D08084	3.9 %	1176.87 ± 89.74	738.95 ± 56.89	0.9893
13D08086	4.2 %	1706.96 ± 132.93	913.84 ± 71.56	0.9937
13D08087	4.5 %	2179.86 ± 186.54	1083.32 ± 93.11	0.9951
13D08088	4.7 %	2452.83 ± 226.04	1168.47 ± 108.06	0.9961
13D08090	4.8 %	2798.65 ± 275.71	1268.86 ± 125.37	0.9968
13D08091	5.1 %	3239.34 ± 328.37	1419.99 ± 144.26	0.9976
13D08092	5.4 % ✓	3428.58 ± 327.86	1454.03 ± 139.33	0.9977
13D08094	5.7 % ✓	3926.65 ± 400.62	1622.61 ± 165.83	0.9981
13D08095	5.9 % ✓	3825.50 ± 366.66	1559.67 ± 149.75	0.9980
13D08096	6.1 % ✓	3725.54 ± 350.83	1502.18 ± 141.73	0.9978
13D08098	6.5 % ✓	4336.74 ± 442.32	1725.12 ± 176.21	0.9983
13D08099	6.9 % ✓	4361.78 ± 393.24	1729.16 ± 156.09	0.9985
13D08100	7.1 % ✓	3952.22 ± 363.29	1578.74 ± 145.36	0.9980
13D08102	7.3 % ✓	3931.38 ± 430.48	1565.72 ± 171.78	0.9978
13D08103	7.8 % ✓	3781.71 ± 373.73	1529.18 ± 151.41	0.9979
13D08104	8.1 % ✓	3290.44 ± 301.17	1353.83 ± 124.22	0.9972
13D08106	8.3 % ✓	3110.57 ± 339.04	1302.05 ± 142.32	0.9969
13D08107	8.8 % ✓	2557.23 ± 225.37	1123.39 ± 99.38	0.9958
13D08108	9.3 % ✓	2116.14 ± 165.60	983.91 ± 77.36	0.9948
13D08110	9.9 % ✓	1683.39 ± 117.46	833.10 ± 58.45	0.9937
13D08111	10.5 % ✓	1407.83 ± 93.78	753.78 ± 50.56	0.9922
13D08112	11.2 % ✓	1050.16 ± 54.57	633.08 ± 33.19	0.9897
13D08114	11.9 % ✓	874.71 ± 44.35	584.87 ± 29.98	0.9871
13D08115	12.8 %	619.73 ± 25.06	486.77 ± 19.93	0.9844
13D08116	13.9 %	496.31 ± 18.70	449.78 ± 17.14	0.9843
13D08118	15.2 %	391.38 ± 13.41	423.54 ± 14.67	0.9846
13D08119	16.7 %	287.38 ± 8.54	377.62 ± 11.35	0.9800
13D08120	18.2 %	235.68 ± 7.24	367.35 ± 11.39	0.9811
13D08122	19.7 %	198.71 ± 5.47	356.73 ± 9.89	0.9790
13D08124	21.2 %	163.11 ± 5.07	342.34 ± 10.69	0.9790

Results	40(a)/36(a) ± 2σ	40(r)/39(k) ± 2σ	Age ± 2σ (Ka)	MSWD
Normal Isochron	291.57 ± 14.41 ± 4.94%	0.32802 ± 0.00527 ± 1.61%	929.2 ± 15.2 ± 1.64%	1.25 22%
			Full External Error ± 25.9 Analytical Error ± 14.9	
Statistics	2σ Confidence Limit Error Magnification Number of Data Points	1.73 1.1195 17	Convergence Number of Iterations Calculated Line	0.000003224456 57 Weighted York-2

Inverse Isochron		39(k)/40(a+r) ± 2σ	36(a)/40(a+r) ± 2σ	r.i.
13D08072	1.8 %	0.0050346 ± 0.0000642	0.00328419 ± 0.00001867	0.0007
13D08074	2.0 %	0.0134911 ± 0.0001801	0.00320875 ± 0.00002143	0.0035
13D08075	2.2 %	0.0281209 ± 0.0004766	0.00318743 ± 0.00003161	0.0136
13D08076	2.4 %	0.0733608 ± 0.0009575	0.00309721 ± 0.00004362	0.0416
13D08078	2.7 %	0.1766367 ± 0.0015581	0.00290658 ± 0.00005429	0.0951
13D08079	3.0 %	0.4087558 ± 0.0028873	0.00254208 ± 0.00006382	0.1604
13D08080	3.3 %	0.7269704 ± 0.0056664	0.00224029 ± 0.00007398	0.1857
13D08082	3.6 %	1.1354440 ± 0.0093795	0.00179125 ± 0.00008193	0.1609
13D08083	3.7 %	1.3823854 ± 0.0141190	0.00151633 ± 0.00010068	0.1418
13D08084	3.9 %	1.5926230 ± 0.0179278	0.00135327 ± 0.00010418	0.1379
13D08086	4.2 %	1.8678845 ± 0.0163927	0.00109428 ± 0.00008569	0.1058
13D08087	4.5 %	2.0122022 ± 0.0170366	0.00092309 ± 0.00007934	0.0937
13D08088	4.7 %	2.0991839 ± 0.0170824	0.00085582 ± 0.00007914	0.0835
13D08090	4.8 %	2.2056425 ± 0.0175134	0.00078811 ± 0.00007787	0.0762
13D08091	5.1 %	2.2812366 ± 0.0162127	0.00070423 ± 0.00007154	0.0661
13D08092	5.4 % ✓	2.3579824 ± 0.0154631	0.00068774 ± 0.00006590	0.0642
13D08094	5.7 % ✓	2.4199648 ± 0.0153753	0.00061629 ± 0.00006298	0.0584
13D08095	5.9 % ✓	2.4527670 ± 0.0149764	0.00064116 ± 0.00006156	0.0595
13D08096	6.1 % ✓	2.4800858 ± 0.0155255	0.00066570 ± 0.00006281	0.0621
13D08098	6.5 % ✓	2.5138716 ± 0.0149286	0.00057967 ± 0.00005921	0.0542
13D08099	6.9 % ✓	2.5224813 ± 0.0125897	0.00057831 ± 0.00005220	0.0505
13D08100	7.1 % ✓	2.5034105 ± 0.0144698	0.00063342 ± 0.00005832	0.0583
13D08102	7.3 % ✓	2.5109029 ± 0.0181806	0.00063868 ± 0.00007007	0.0626
13D08103	7.8 % ✓	2.4730359 ± 0.0159940	0.00065395 ± 0.00006475	0.0617
13D08104	8.1 % ✓	2.4304751 ± 0.0165825	0.00073865 ± 0.00006777	0.0703
13D08106	8.3 % ✓	2.3889835 ± 0.0204931	0.00076802 ± 0.00008395	0.0751
13D08107	8.8 % ✓	2.2763559 ± 0.0183916	0.00089017 ± 0.00007875	0.0869
13D08108	9.3 % ✓	2.1507446 ± 0.0172275	0.00101635 ± 0.00007991	0.0967
13D08110	9.9 % ✓	2.0206271 ± 0.0158483	0.00120033 ± 0.00008422	0.1055
13D08111	10.5 % ✓	1.8676796 ± 0.0155711	0.00132664 ± 0.00008898	0.1169
13D08112	11.2 % ✓	1.6588028 ± 0.0124496	0.00157957 ± 0.00008281	0.1331
13D08114	11.9 % ✓	1.4955794 ± 0.0122569	0.00170979 ± 0.00008765	0.1477
13D08115	12.8 %	1.2731399 ± 0.0091824	0.00205435 ± 0.00008412	0.1589
13D08116	13.9 %	1.1034632 ± 0.0074356	0.00222332 ± 0.00008474	0.1543
13D08118	15.2 %	0.9240599 ± 0.0056040	0.00236103 ± 0.00008176	0.1458
13D08119	16.7 %	0.7610247 ± 0.0045543	0.00264816 ± 0.00007960	0.1570
13D08120	18.2 %	0.6415494 ± 0.0038520	0.00272218 ± 0.00008444	0.1438
13D08122	19.7 %	0.5570416 ± 0.0031575	0.00280324 ± 0.00007771	0.1371
13D08124	21.2 %	0.4764509 ± 0.0030405	0.00292112 ± 0.00009118	0.1272

Results	40(a)/36(a) ± 2σ	40(r)/39(k) ± 2σ	Age ± 2σ (Ka)	MSWD
Inverse Isochron	291.32 ± 15.26 ± 5.24%	0.32882 ± 0.00550 ± 1.67%	931.5 ± 15.9 ± 1.70%	1.41 13%
			Full External Error ± 26.3 Analytical Error ± 15.6	
Statistics	2σ Confidence Limit Error Magnification Number of Data Points Spreading Factor	1.73 1.1857 17 33.8%	Convergence Number of Iterations Calculated Line	0.0027870176 3 Weighted York-2

Degassing Patterns		36Ar(a) [fA]	%1σ	36Ar(c) [fA]	%1σ	36Ar(ca) [fA]	%1σ	36Ar(cl) [fA]	%1σ	37Ar(ca) [fA]	%1σ	38Ar(a) [fA]	%1σ	38Ar(c) [fA]	%1σ	38Ar(k) [fA]	%1σ	38Ar(ca) [fA]	%1σ	38Ar(cl) [fA]	%1σ	39Ar(k) [fA]	%1σ	39Ar(ca) [fA]	%1σ	40Ar(r) [fA]	%1σ	40Ar(a) [fA]	%1σ	40Ar(c) [fA]	%1σ	40Ar(k) [fA]	%1σ
13D08072	1.8 %	3.7603759	0.28	0.0000000	0.00	0.0090545	5.48	0.0000165	74.59	34.0011	5.48	0.7028143	0.28	0.0000000	0.00	0.069353	0.66	0.0024413	13.94	0.0537500	74.60	5.7645	0.64	0.0229712	5.64	33.80076	9.35	1111.1911	0.28	0.0000000	0.00	0.0220378	2.74
13D08074	2.0 %	1.2872203	0.33	0.0000000	0.00	0.0060851	7.58	0.0000196	60.79	22.8504	7.58	0.2405815	0.33	0.0000000	0.00	0.065113	0.69	0.0016407	14.90	0.0639301	60.80	5.4121	0.67	0.0154377	7.70	20.78588	6.11	380.3736	0.33	0.0000000	0.00	0.0206905	2.74
13D08075	2.2 %	0.4620018	0.49	0.0000000	0.00	0.0035541	14.67	0.0000000	0.00	13.3463	14.67	0.0863481	0.49	0.0000000	0.00	0.049038	0.86	0.0009583	19.48	0.0000000	0.00	4.0760	0.84	0.0090167	14.73	8.42353	8.05	136.5215	0.49	0.0000000	0.00	0.0155825	2.79
13D08076	2.4 %	0.2385472	0.69	0.0000000	0.00	0.0046142	10.55	0.0000095	124.18	17.3272	10.55	0.0445845	0.69	0.0000000	0.00	0.067978	0.66	0.0012441	16.60	0.0307662	124.19	5.6502	0.64	0.0117062	10.63	6.52927	7.63	70.4907	0.69	0.0000000	0.00	0.0216009	2.74
13D08078	2.7 %	0.1561595	0.91	0.0000000	0.00	0.0055254	8.59	0.0000000	0.00	20.7486	8.59	0.0291862	0.91	0.0000000	0.00	0.114174	0.43	0.0014898	15.43	0.0000000	0.00	9.4900	0.39	0.0140178	8.69	7.58103	5.73	46.1451	0.91	0.0000000	0.00	0.0362803	2.69
13D08079	3.0 %	0.1012045	1.23	0.0000000	0.00	0.0094317	5.19	0.0000000	0.00	35.4176	5.18	0.0189151	1.23	0.0000000	0.00	0.195784	0.28	0.0025430	13.83	0.0000000	0.00	16.2733	0.23	0.0239281	5.35	9.90576	3.86	29.9059	1.23	0.0000000	0.00	0.0622127	2.67
13D08080	3.3 %	0.0689793	1.61	0.0000000	0.00	0.0118113	4.04	0.0000000	0.00	44.3534	4.03	0.0128922	1.61	0.0000000	0.00	0.269298	0.24	0.0031846	13.44	0.0000000	0.00	22.3837	0.18	0.0299652	4.24	10.40695	3.32	20.3834	1.61	0.0000000	0.00	0.0855728	2.67
13D08082	3.6 %	0.0493991	2.25	0.0000000	0.00	0.0133697	3.75	0.0000000	0.00	50.2054	3.75	0.0092327	2.25	0.0000000	0.00	0.376729	0.21	0.0036047	13.36	0.0000000	0.00	31.3132	0.14	0.0339188	3.97	12.98051	2.67	14.5974	2.25	0.0000000	0.00	0.1197104	2.66
13D08083	3.7 %	0.0327641	3.28	0.0000000	0.00	0.0123753	4.02	0.0000000	0.00	46.4711	4.02	0.0061236	3.28	0.0000000	0.00	0.359365	0.21	0.0033366	13.44	0.0000000	0.00	29.8699	0.14	0.0313959	4.23	11.92573	2.81	9.6818	3.28	0.0000000	0.00	0.1141927	2.66
13D08084	3.9 %	0.0263583	3.81	0.0000000	0.00	0.0125137	3.94	0.0000000	0.00	46.9909	3.94	0.0049264	3.81	0.0000000	0.00	0.373205	0.21	0.0033739	13.41	0.0000000	0.00	31.0203	0.13	0.0317470	4.16	11.68860	2.70	7.7889	3.81	0.0000000	0.00	0.1185906	2.66
13D08086	4.2 %	0.0273120	3.89	0.0000000	0.00	0.0185728	2.70	0.0000000	0.00	69.7440	2.70	0.0051046	3.89	0.0000000	0.00	0.560889	0.19	0.0050076	13.10	0.0000000	0.00	46.6203	0.10	0.0471190	3.00	16.88820	1.96	8.0707	3.89	0.0000000	0.00	0.1782295	2.66
13D08087	4.5 %	0.0238376	4.28	0.0000000	0.00	0.0203306	2.42	0.0000006	#####	76.3447	2.42	0.0044552	4.28	0.0000000	0.00	0.625162	0.19	0.0054815	13.05	0.0019680	#####	51.9626	0.09	0.0515785	2.75	18.77974	1.70	7.0440	4.28	0.0000000	0.00	0.1986530	2.66
13D08088	4.7 %	0.0230127	4.61	0.0000000	0.00	0.0226867	2.18	0.0000000	0.00	85.1923	2.18	0.0043011	4.61	0.0000000	0.00	0.679104	0.18	0.0061168	13.00	0.0000000	0.00	56.4462	0.09	0.0575559	2.54	20.08933	1.65	6.8002	4.61	0.0000000	0.00	0.2157936	2.66
13D08090	4.8 %	0.0217881	4.92	0.0000000	0.00	0.0234944	2.13	0.0000000	0.00	88.2252	2.12	0.0040722	4.92	0.0000000	0.00	0.733618	0.18	0.0063346	12.99	0.0000000	0.00	60.9773	0.09	0.0596049	2.50	21.20767	1.58	6.4384	4.92	0.0000000	0.00	0.2331163	2.66
13D08091	5.1 %	0.0217051	5.07	0.0000000	0.00	0.0271829	1.86	0.0000000	0.00	102.0763	1.85	0.0040567	5.07	0.0000000	0.00	0.845901	0.18	0.0073291	12.95	0.0000000	0.00	70.3101	0.08	0.0689627	2.27	24.40719	1.40	6.4139	5.07	0.0000000	0.00	0.2687955	2.66
13D08092	5.4 %	0.0229328	4.78	0.0000000	0.00	0.0297280	1.81	0.0000000	0.00	111.6333	1.81	0.0042861	4.78	0.0000000	0.00	0.945964	0.18	0.0080153	12.95	0.0000000	0.00	78.6272	0.08	0.0754195	2.24	26.56845	1.28	6.7767	4.78	0.0000000	0.00	0.3005917	2.66
13D08094	5.7 %	0.0213476	5.10	0.0000000	0.00	0.0317627	1.67	0.0000000	0.00	119.2740	1.66	0.0039899	5.10	0.0000000	0.00	1.008491	0.18	0.0085639	12.93	0.0000000	0.00	83.8244	0.08	0.0805815	2.12	28.33047	1.20	6.3082	5.10	0.0000000	0.00	0.3204606	2.66
13D08095	5.9 %	0.0232372	4.79	0.0000000	0.00	0.0325053	1.65	0.0000000	0.00	122.0627	1.64	0.0043430	4.79	0.0000000	0.00	1.069484	0.18	0.0087641	12.92	0.0000000	0.00	88.8940	0.08	0.0824656	2.11	29.37574	1.18	6.8666	4.79	0.0000000	0.00	0.3398418	2.66
13D08096	6.1 %	0.0233613	4.71	0.0000000	0.00	0.0320043	1.60	0.0000000	0.00	120.1813	1.59	0.0043662	4.71	0.0000000	0.00	1.047101	0.18	0.0086290	12.92	0.0000000	0.00	87.0336	0.08	0.0811945	2.07	28.18969	1.21	6.9033	4.71	0.0000000	0.00	0.3327293	2.66
13D08098	6.5 %	0.0216787	5.10	0.0000000	0.00	0.0354937	1.56	0.0000000	0.00	133.2847	1.55	0.0040518	5.10	0.0000000	0.00	1.131093	0.18	0.0095698	12.91	0.0000000	0.00	94.0149	0.08	0.0900471	2.04	30.99238	1.11	6.4061	5.10	0.0000000	0.00	0.3594188	2.66
13D08099	6.9 %	0.0259131	4.51	0.0000000	0.00	0.0430027	1.28	0.0000000	0.00	161.4823	1.27	0.0048432	4.51	0.0000000	0.00	1.359832	0.18	0.0115944	12.88	0.0000000	0.00	113.0274	0.07	0.1090975	1.83	37.15068	0.97	7.6573	4.51	0.0000000	0.00	0.4321036	2.66
13D08100	7.1 %	0.0242406	4.60	0.0000000	0.00	0.0359671	1.43	0.0000000	0.00	135.0622	1.42	0.0045306	4.60	0.0000000	0.00	1.152623	0.18	0.0096975	12.90	0.0000000	0.00	95.8044	0.08	0.0912480	1.94	31.10645	1.11	7.1631	4.60	0.0000000	0.00	0.3662602	2.66
13D08102	7.3 %	0.0193062	5.47	0.0000000	0.00	0.0291081	1.74	0.0000000	0.00	109.3057	1.73	0.0036083	5.47	0.0000000	0.00	0.913154	0.18	0.0078481	12.94	0.0000000	0.00	75.9001	0.08	0.0738469	2.18	24.52321	1.35	5.7050	5.47	0.0000000	0.00	0.2901660	2.66
13D08103	7.8 %	0.0222209	4.94	0.0000000	0.00	0.0332768	1.59	0.0000000	0.00	124.9597	1.58	0.0041531	4.94	0.0000000	0.00	1.011002	0.18	0.0089721	12.92	0.0000000	0.00	84.0331	0.08	0.0844228	2.06	27.41344	1.25	6.5663	4.94	0.0000000	0.00	0.3212585	2.66
13D08104	8.1 %	0.0236273	4.58	0.0000000	0.00	0.0322821	1.60	0.0000032	391.78	121.2245	1.59	0.0044160	4.58	0.0000000	0.00	0.935342	0.18	0.0087039	12.92	0.0105045	391.78	77.7444	0.08	0.0818992	2.07	25.00543	1.35	6.9819	4.58	0.0000000	0.00	0.2972167	2.66
13D08106	8.3 %	0.0195038	5.45	0.0000000	0.00	0.0253324	2.02	0.0000000	0.00	95.1272	2.02	0.0036453	5.45	0.0000000	0.00	0.729896	0.18	0.0068301	12.98	0.0000000	0.00	60.6680	0.09	0.0642680	2.41	19.63152	1.69	5.7634	5.45	0.0000000	0.00	0.2319336	2.66
13D08107	8.8 %	0.0239938	4.41	0.0000000	0.00	0.0282676	1.79	0.0000000	0.00	106.1495	1.79	0.0044844	4.41	0.0000000	0.00	0.738193	0.18	0.0076215	12.94	0.0000000	0.00	61.3576	0.09	0.0717146	2.22	19.86413	1.66	7.0902	4.41	0.0000000	0.00	0.2345700	2.66
13D08108	9.3 %	0.0277652	3.91	0.0000000	0.00	0.0290083	1.76	0.0000000	0.00	108.9309	1.76	0.0051893	3.91	0.0000000	0.00	0.706880	0.18	0.0078212	12.94	0.0000000	0.00	58.7549	0.09	0.0735937	2.20	19.11379	1.77	8.2046	3.91	0.0000000	0.00	0.2246200	2.66
13D08110	9.9 %	0.0332784	3.49	0.0000000	0.00	0.0313462	1.63	0.0000136	84.27	117.7101	1.62	0.0062197	3.49	0.0000000	0.00	0.673985	0.19	0.0084516	12.92	0.0442667	84.28	56.0207	0.09	0.0795249	2.09	17.89062	2.01	9.8338	3.49	0.0000000	0.00	0.2141670	2.66
13D08111	10.5 %	0.0350681	3.33	0.0000000	0.00	0.0304105	1.69	0.0000034	339.80	114.1963	1.68	0.0065542	3.33	0.0000000	0.00	0.593967	0.19	0.0081993	12.93	0.0111635	339.80	49.3697	0.10	0.0771510	2.14	16.07109	2.25	10.3626	3.33	0.0000000	0.00	0.1887403	2.66
13D08112	11.2 %	0.0461588	2.60	0.0000000	0.00	0.0371230	1.47	0.0000061	195.06	139.4030	1.46	0.0086271	2.60	0.0000000	0.00	0.583193	0.19	0.0100091	12.90	0.0196905	195.07</												

Additional Parameters		40Ar/39Ar	1σ	37Ar/39Ar	1σ	36Ar/39Ar	1σ	Time (days)	37Ar (decay)	39Ar (decay)	40Ar (moles)
13D08072	1.8 %	197.842294	1.254804	5.874915	0.324052	0.651307	0.004523	189.209	42.086402	1.00133683	5.496E-11
13D08074	2.0 %	73.915683	0.491692	4.210082	0.320493	0.238289	0.001767	189.226	42.100837	1.00133696	1.926E-11
13D08075	2.2 %	35.486102	0.299804	3.267144	0.480076	0.113967	0.001100	189.235	42.107767	1.00133702	6.958E-12
13D08076	2.4 %	13.606890	0.088574	3.060282	0.323455	0.042948	0.000390	189.244	42.115276	1.00133708	3.698E-12
13D08078	2.7 %	5.656805	0.024905	2.183139	0.187744	0.017012	0.000156	189.261	42.129721	1.00133720	2.581E-12
13D08079	3.0 %	2.446674	0.008625	2.173236	0.112791	0.006789	0.000072	189.269	42.136656	1.00133726	1.914E-12
13D08080	3.3 %	1.377551	0.005354	1.978858	0.079913	0.003605	0.000045	189.278	42.144170	1.00133732	1.482E-12
13D08082	3.6 %	0.883579	0.003633	1.601595	0.060069	0.002002	0.000032	189.295	42.158046	1.00133744	1.329E-12
13D08083	3.7 %	0.726447	0.003690	1.554150	0.062549	0.001510	0.000032	189.304	42.165565	1.00133751	1.043E-12
13D08084	3.9 %	0.631072	0.003530	1.513295	0.059660	0.001252	0.000028	189.313	42.172506	1.00133756	9.406E-13
13D08086	4.2 %	0.538644	0.002345	1.494489	0.040326	0.000983	0.000020	189.330	42.186970	1.00133769	1.207E-12
13D08087	4.5 %	0.500294	0.002100	1.467767	0.035515	0.000849	0.000017	189.339	42.194493	1.00133775	1.249E-12
13D08088	4.7 %	0.479709	0.001934	1.507729	0.032834	0.000809	0.000017	189.347	42.201439	1.00133781	1.301E-12
13D08090	4.8 %	0.456759	0.001796	1.445440	0.030737	0.000742	0.000016	189.365	42.215913	1.00133793	1.338E-12
13D08091	5.1 %	0.441748	0.001553	1.450379	0.026892	0.000695	0.000014	189.373	42.222862	1.00133799	1.492E-12
13D08092	5.4 %	✓ 0.427504	0.001386	1.418420	0.025642	0.000669	0.000012	189.382	42.230392	1.00133806	1.615E-12
13D08094	5.7 %	✓ 0.416652	0.001308	1.421537	0.023623	0.000633	0.000011	189.399	42.244876	1.00133818	1.678E-12
13D08095	5.9 %	✓ 0.411144	0.001240	1.371854	0.022531	0.000626	0.000011	189.408	42.251830	1.00133824	1.756E-12
13D08096	6.1 %	✓ 0.406655	0.001257	1.379574	0.022009	0.000636	0.000011	189.416	42.258785	1.00133830	1.700E-12
13D08098	6.5 %	✓ 0.401231	0.001176	1.416341	0.022044	0.000608	0.000010	189.433	42.273279	1.00133842	1.812E-12
13D08099	6.9 %	✓ 0.399872	0.000984	1.427324	0.018175	0.000609	0.000009	189.442	42.280818	1.00133848	2.172E-12
13D08100	7.1 %	✓ 0.402894	0.001150	1.408429	0.020034	0.000628	0.000010	189.451	42.287778	1.00133854	1.855E-12
13D08102	7.3 %	✓ 0.401695	0.001437	1.438727	0.024949	0.000637	0.000012	189.468	42.302281	1.00133866	1.465E-12
13D08103	7.8 %	✓ 0.407775	0.001303	1.485537	0.023500	0.000660	0.000011	189.476	42.309245	1.00133872	1.646E-12
13D08104	8.1 %	✓ 0.414828	0.001399	1.557629	0.024831	0.000718	0.000012	189.485	42.316790	1.00133879	1.550E-12
13D08106	8.3 %	✓ 0.421964	0.001791	1.566339	0.031604	0.000738	0.000015	189.503	42.331304	1.00133891	1.230E-12
13D08107	8.8 %	✓ 0.442604	0.001770	1.727994	0.030929	0.000851	0.000015	189.511	42.338272	1.00133897	1.305E-12
13D08108	9.3 %	✓ 0.468192	0.001858	1.851670	0.032578	0.000965	0.000016	189.520	42.345822	1.00133903	1.322E-12
13D08110	9.9 %	✓ 0.498012	0.001936	2.098212	0.034052	0.001152	0.000019	189.537	42.359765	1.00133915	1.341E-12
13D08111	10.5 %	✓ 0.538405	0.002227	2.309476	0.038863	0.001324	0.000021	189.546	42.367319	1.00133921	1.278E-12
13D08112	11.2 %	✓ 0.605491	0.002256	2.870244	0.041927	0.001715	0.000022	189.554	42.374293	1.00133927	1.412E-12
13D08114	11.9 %	✓ 0.670957	0.002732	3.309273	0.048815	0.002022	0.000026	189.572	42.388826	1.00133939	1.296E-12
13D08115	12.8 %	0.786724	0.002822	4.798960	0.054240	0.002886	0.000029	189.581	42.396386	1.00133946	1.506E-12
13D08116	13.9 %	0.906309	0.003038	6.101490	0.061233	0.003632	0.000034	189.589	42.403365	1.00133952	1.627E-12
13D08118	15.2 %	1.079392	0.003257	9.011788	0.074094	0.004940	0.000039	189.606	42.417908	1.00133964	1.843E-12
13D08119	16.7 %	1.306515	0.003888	12.720762	0.094215	0.006838	0.000045	189.615	42.424891	1.00133970	1.946E-12
13D08120	18.2 %	1.545454	0.004610	16.194353	0.119341	0.008510	0.000057	189.624	42.432456	1.00133976	1.990E-12
13D08122	19.7 %	1.774153	0.004984	20.460256	0.140877	0.010412	0.000059	189.641	42.447010	1.00133989	2.213E-12
13D08124	21.2 %	2.065329	0.006515	26.289843	0.179132	0.013024	0.000084	189.658	42.460986	1.00134000	2.053E-12

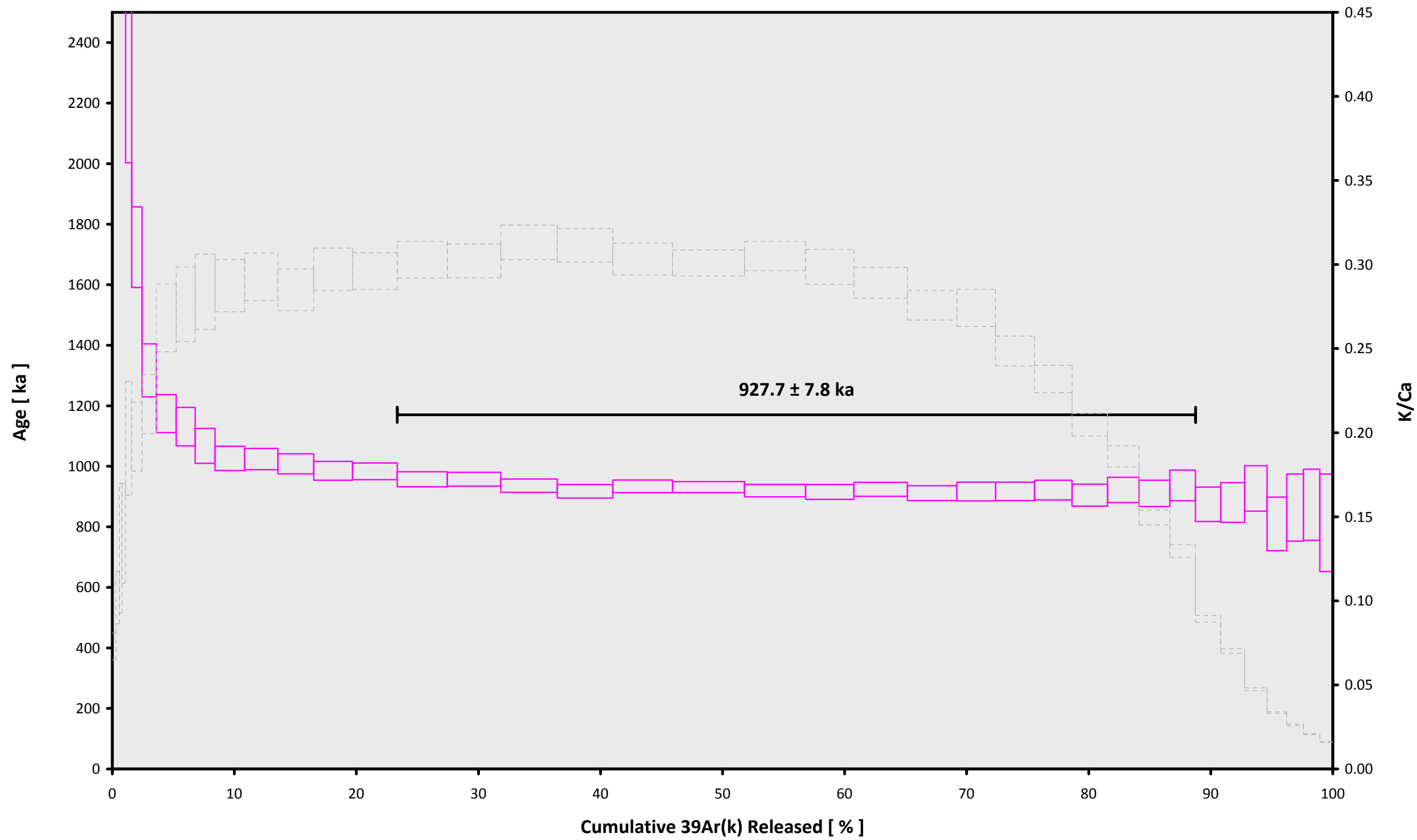
Procedure Blanks		36Ar ± 1σ (SE) [fA]	37Ar ± 1σ (SE) [fA]	38Ar ± 1σ (SE) [fA]	39Ar ± 1σ (SE) [fA]	40Ar ± 1σ (SE) [fA]
13D08072	1.8 %	0.0145303 ± 0.0006653	0.0848887 ± 0.0300001	0.0037679 ± 0.0259693	0.1104954 ± 0.0244653	4.1253702 ± 0.1020194
13D08074	2.0 %	0.0153041 ± 0.0006653	0.0621445 ± 0.0300001	0.0037679 ± 0.0259693	0.1149964 ± 0.0244653	4.3759030 ± 0.1020194
13D08075	2.2 %	0.0156226 ± 0.0006653	0.0534043 ± 0.0300001	0.0037679 ± 0.0259693	0.1156740 ± 0.0244653	4.4786588 ± 0.1020194
13D08076	2.4 %	0.0159316 ± 0.0006653	0.0453427 ± 0.0300001	0.0037679 ± 0.0259693	0.1154793 ± 0.0244653	4.5780938 ± 0.1020194
13D08078	2.7 %	0.0164284 ± 0.0006653	0.0334399 ± 0.0300001	0.0037679 ± 0.0259693	0.1128179 ± 0.0244653	4.7371820 ± 0.1020194
13D08079	3.0 %	0.0166249 ± 0.0006653	0.0291831 ± 0.0300001	0.0037679 ± 0.0259693	0.1106603 ± 0.0244653	4.7997040 ± 0.1020194
13D08080	3.3 %	0.0168093 ± 0.0006653	0.0254820 ± 0.0300001	0.0037679 ± 0.0259693	0.1078084 ± 0.0244653	4.8581378 ± 0.1020194
13D08082	3.6 %	0.0170790 ± 0.0006653	0.0207500 ± 0.0300001	0.0037679 ± 0.0259693	0.1014582 ± 0.0244653	4.9427463 ± 0.1020194
13D08083	3.7 %	0.0171899 ± 0.0006653	0.0191255 ± 0.0300001	0.0037679 ± 0.0259693	0.0975956 ± 0.0244653	4.9771100 ± 0.1020194
13D08084	3.9 %	0.0172725 ± 0.0006653	0.0180981 ± 0.0300001	0.0037679 ± 0.0259693	0.0938596 ± 0.0244653	5.0023485 ± 0.1020194
13D08086	4.2 %	0.0173892 ± 0.0006653	0.0170903 ± 0.0300001	0.0037679 ± 0.0259693	0.0858155 ± 0.0244653	5.0369512 ± 0.1020194
13D08087	4.5 %	0.0174234 ± 0.0006653	0.0170130 ± 0.0300001	0.0037679 ± 0.0259693	0.0816221 ± 0.0244653	5.0463714 ± 0.1020194
13D08088	4.7 %	0.0174406 ± 0.0006653	0.0171260 ± 0.0300001	0.0037679 ± 0.0259693	0.0778152 ± 0.0244653	5.0504579 ± 0.1020194
13D08090	4.8 %	0.0174375 ± 0.0006653	0.0176942 ± 0.0300001	0.0037679 ± 0.0259693	0.0702703 ± 0.0244653	5.0465029 ± 0.1020194
13D08091	5.1 %	0.0174196 ± 0.0006653	0.0180288 ± 0.0300001	0.0037679 ± 0.0259693	0.0669117 ± 0.0244653	5.0394003 ± 0.1020194
13D08092	5.4 %	0.0173899 ± 0.0006653	0.0183730 ± 0.0300001	0.0037679 ± 0.0259693	0.0635151 ± 0.0244653	5.0284508 ± 0.1020194
13D08094	5.7 %	0.0173069 ± 0.0006653	0.0188301 ± 0.0300001	0.0037679 ± 0.0259693	0.0578061 ± 0.0244653	4.9993973 ± 0.1020194
13D08095	5.9 %	0.0172570 ± 0.0006653	0.0188958 ± 0.0300001	0.0037679 ± 0.0259693	0.0554930 ± 0.0244653	4.9823839 ± 0.1020194
13D08096	6.1 %	0.0172017 ± 0.0006653	0.0188336 ± 0.0300001	0.0037679 ± 0.0259693	0.0534768 ± 0.0244653	4.9637815 ± 0.1020194
13D08098	6.5 %	0.0170729 ± 0.0006653	0.0182334 ± 0.0300001	0.0037679 ± 0.0259693	0.0502660 ± 0.0244653	4.9211129 ± 0.1020194
13D08099	6.9 %	0.0170004 ± 0.0006653	0.0176523 ± 0.0300001	0.0037679 ± 0.0259693	0.0491319 ± 0.0244653	4.8974401 ± 0.1020194
13D08100	7.1 %	0.0169310 ± 0.0006653	0.0169507 ± 0.0300001	0.0037679 ± 0.0259693	0.0484067 ± 0.0244653	4.8750268 ± 0.1020194
13D08102	7.3 %	0.0167822 ± 0.0006653	0.0150068 ± 0.0300001	0.0037679 ± 0.0259693	0.0478484 ± 0.0244653	4.8275521 ± 0.1020194
13D08103	7.8 %	0.0167097 ± 0.0006653	0.0138679 ± 0.0300001	0.0037679 ± 0.0259693	0.0480080 ± 0.0244653	4.8047978 ± 0.1020194
13D08104	8.1 %	0.0166314 ± 0.0006653	0.0125122 ± 0.0300001	0.0037679 ± 0.0259693	0.0484632 ± 0.0244653	4.7804481 ± 0.1020194
13D08106	8.3 %	0.0164830 ± 0.0006653	0.0096668 ± 0.0300001	0.0037679 ± 0.0259693	0.0500457 ± 0.0244653	4.7352052 ± 0.1020194
13D08107	8.8 %	0.0164138 ± 0.0006653	0.0082578 ± 0.0300001	0.0037679 ± 0.0259693	0.0510688 ± 0.0244653	4.7145183 ± 0.1020194
13D08108	9.3 %	0.0163407 ± 0.0006653	0.0067597 ± 0.0300001	0.0037679 ± 0.0259693	0.0523128 ± 0.0244653	4.6930440 ± 0.1020194
13D08110	9.9 %	0.0162121 ± 0.0006653	0.0042614 ± 0.0300001	0.0037679 ± 0.0259693	0.0547993 ± 0.0244653	4.6563544 ± 0.1020194
13D08111	10.5 %	0.0161465 ± 0.0006653	0.0031727 ± 0.0300001	0.0037679 ± 0.0259693	0.0561371 ± 0.0244653	4.6382579 ± 0.1020194
13D08112	11.2 %	0.0160886 ± 0.0006653	0.0024144 ± 0.0300001	0.0037679 ± 0.0259693	0.0572904 ± 0.0244653	4.6227435 ± 0.1020194
13D08114	11.9 %	0.0159767 ± 0.0006653	0.0018853 ± 0.0300001	0.0037679 ± 0.0259693	0.0591739 ± 0.0244653	4.5942495 ± 0.1020194
13D08115	12.8 %	0.0159233 ± 0.0006653	0.0023408 ± 0.0300001	0.0037679 ± 0.0259693	0.0597204 ± 0.0244653	4.5815166 ± 0.1020194
13D08116	13.9 %	0.0158769 ± 0.0006653	0.0033169 ± 0.0300001	0.0037679 ± 0.0259693	0.0598598 ± 0.0244653	4.5710264 ± 0.1020194
13D08118	15.2 %	0.0157885 ± 0.0006653	0.0074415 ± 0.0300001	0.0037679 ± 0.0259693	0.0586806 ± 0.0244653	4.5529593 ± 0.1020194
13D08119	16.7 %	0.0157499 ± 0.0006653	0.0106157 ± 0.0300001	0.0037679 ± 0.0259693	0.0572363 ± 0.0244653	4.5460158 ± 0.1020194
13D08120	18.2 %	0.0157104 ± 0.0006653	0.0150807 ± 0.0300001	0.0037679 ± 0.0259693	0.0548911 ± 0.0244653	4.5396634 ± 0.1020194
13D08122	19.7 %	0.0156404 ± 0.0006653	0.0271452 ± 0.0300001	0.0037679 ± 0.0259693	0.0476687 ± 0.0244653	4.5304851 ± 0.1020194
13D08124	21.2 %	0.0155781 ± 0.0006653	0.0438181 ± 0.0300001	0.0037679 ± 0.0259693	0.0366706 ± 0.0244653	4.5246933 ± 0.1020194

Intercept Values		36Ar ± 1σ (SE) [fA]	r2	Regression (type,n)	37Ar ± 1σ (SE) [fA]	r2	Regression (type,n)	38Ar ± 1σ (SE) [fA]	r2	Regression (type,n)	39Ar ± 1σ (SE) [fA]	r2	Regression (type,n)	40Ar ± 1σ (SE) [fA]	r2	Regression (type,n)
13D08072	1.8 %	3.6463643 ± 0.0044738	0.9718	EXP 150 of 150	0.878281 ± 0.031138	0.0441	EXP 150 of 150	0.8146693 ± 0.0298179	0.0453	EXP 150 of 150	5.855725 ± 0.026757	0.5067	EXP 150 of 150	1151.470193 ± 0.082697	0.9999	EXP 150 of 150
13D08074	2.0 %	1.2614132 ± 0.0025217	0.9145	EXP 150 of 150	0.595160 ± 0.026920	0.0345	EXP 150 of 150	0.3630505 ± 0.0282572	0.0414	EXP 150 of 150	5.502885 ± 0.025931	0.5393	EXP 150 of 150	406.372775 ± 0.048134	0.9995	EXP 150 of 150
13D08075	2.2 %	0.4641823 ± 0.0016624	0.7286	EXP 150 of 150	0.364672 ± 0.034380	0.0032	EXP 150 of 150	0.1122062 ± 0.0251458	0.0001	EXP 150 of 150	4.170829 ± 0.023651	0.5226	EXP 150 of 150	149.734407 ± 0.040706	0.9935	EXP 150 of 150
13D08076	2.4 %	0.2502249 ± 0.0012251	0.4629	EXP 150 of 150	0.449383 ± 0.030197	0.0306	EXP 150 of 150	0.1390733 ± 0.0273849	0.0178	EXP 150 of 150	5.736068 ± 0.025834	0.5791	EXP 150 of 150	81.776493 ± 0.031375	0.8952	EXP 150 of 150
13D08078	2.7 %	0.1722106 ± 0.0010377	0.1265	EXP 150 of 150	0.517097 ± 0.028615	0.0101	EXP 149 of 150	0.0674281 ± 0.0274523	0.0219	EXP 150 of 150	9.547415 ± 0.027276	0.8265	EXP 150 of 150	58.609066 ± 0.030776	0.5693	EXP 150 of 150
13D08079	3.0 %	0.1232220 ± 0.0008322	0.0000	EXP 150 of 150	0.854643 ± 0.030163	0.0879	EXP 150 of 150	0.1418821 ± 0.0274747	0.0079	EXP 149 of 150	16.288782 ± 0.026412	0.9357	EXP 150 of 150	44.754767 ± 0.030083	0.9384	EXP 150 of 150
13D08080	3.3 %	0.0946505 ± 0.0006773	0.0018	EXP 150 of 150	1.059019 ± 0.028358	0.0892	EXP 149 of 150	0.2607401 ± 0.0260612	0.0081	EXP 150 of 150	22.357694 ± 0.028397	0.9637	EXP 150 of 150	35.796908 ± 0.031017	0.9670	EXP 149 of 150
13D08082	3.6 %	0.0775562 ± 0.0006712	0.0182	EXP 150 of 150	1.190268 ± 0.031263	0.0549	EXP 150 of 150	0.2937638 ± 0.0259112	0.0022	EXP 150 of 150	31.219574 ± 0.028724	0.9812	EXP 149 of 150	32.696786 ± 0.034423	0.9658	EXP 150 of 150
13D08083	3.7 %	0.0606814 ± 0.0006240	0.1219	EXP 150 of 150	1.101462 ± 0.030941	0.0080	EXP 150 of 150	0.3096061 ± 0.0279054	0.0029	EXP 150 of 150	29.780455 ± 0.029039	0.9787	EXP 150 of 150	26.743041 ± 0.029255	0.9816	EXP 150 of 150
13D08084	3.9 %	0.0547254 ± 0.0005086	0.1613	EXP 150 of 150	1.112360 ± 0.030337	0.0216	EXP 150 of 150	0.3424451 ± 0.0275583	0.0046	EXP 150 of 150	30.919034 ± 0.027364	0.9821	EXP 150 of 150	24.638317 ± 0.030961	0.9810	EXP 150 of 150
13D08086	4.2 %	0.0615988 ± 0.0006003	0.0647	EXP 150 of 150	1.640638 ± 0.030518	0.0710	EXP 150 of 150	0.5239380 ± 0.0248462	0.0319	EXP 150 of 150	46.412301 ± 0.029709	0.9906	EXP 150 of 150	30.225241 ± 0.030596	0.9724	EXP 150 of 150
13D08087	4.5 %	0.0599796 ± 0.0005345	0.1822	EXP 150 of 150	1.793900 ± 0.029052	0.1140	EXP 150 of 150	0.6256683 ± 0.0275643	0.0808	EXP 150 of 150	51.715764 ± 0.026404	0.9942	EXP 150 of 150	31.121738 ± 0.031241	0.9688	EXP 150 of 150
13D08088	4.7 %	0.0614716 ± 0.0006008	0.1074	EXP 150 of 150	1.999611 ± 0.028878	0.1907	EXP 150 of 150	0.6346478 ± 0.0248398	0.0375	EXP 150 of 150	56.168697 ± 0.028909	0.9940	EXP 150 of 150	32.211000 ± 0.031031	0.9664	EXP 150 of 150
13D08090	4.8 %	0.0610668 ± 0.0006177	0.1020	EXP 150 of 150	2.070053 ± 0.029419	0.1465	EXP 150 of 150	0.6643257 ± 0.0255702	0.0259	EXP 150 of 150	60.661236 ± 0.031149	0.9940	EXP 150 of 150	32.982429 ± 0.031957	0.9569	EXP 150 of 150
13D08091	5.1 %	0.0645229 ± 0.0006553	0.1056	EXP 150 of 150	2.392210 ± 0.029191	0.1506	EXP 150 of 150	0.7781219 ± 0.0267914	0.0555	EXP 150 of 150	69.931750 ± 0.029597	0.9960	EXP 150 of 150	36.192529 ± 0.030392	0.9502	EXP 150 of 150
13D08092	5.4 %	0.0681282 ± 0.0006222	0.0879	EXP 150 of 150	2.614378 ± 0.032873	0.1614	EXP 150 of 150	0.8486168 ± 0.0268845	0.0210	EXP 150 of 150	78.191076 ± 0.033053	0.9960	EXP 150 of 150	38.742642 ± 0.028019	0.9453	EXP 149 of 150
13D08094	5.7 %	0.0684782 ± 0.0006172	0.1219	EXP 149 of 150	2.791566 ± 0.031153	0.2592	EXP 150 of 150	0.9163433 ± 0.0254701	0.0378	EXP 150 of 150	83.349716 ± 0.029929	0.9971	EXP 150 of 150	40.029703 ± 0.030770	0.9185	EXP 150 of 150
13D08095	5.9 %	0.0709645 ± 0.0006507	0.0661	EXP 150 of 150	2.855994 ± 0.031731	0.1220	EXP 150 of 150	0.9323491 ± 0.0271453	0.0002	EXP 150 of 150	88.381847 ± 0.031515	0.9971	EXP 150 of 150	41.639032 ± 0.031910	0.9002	EXP 150 of 150
13D08096	6.1 %	0.0705461 ± 0.0006468	0.0093	EXP 150 of 150	2.811742 ± 0.028788	0.2471	EXP 150 of 150	0.9693742 ± 0.0313298	0.0173	EXP 150 of 150	86.531715 ± 0.034656	0.9964	EXP 150 of 150	40.461592 ± 0.029108	0.9150	EXP 150 of 150
13D08098	6.5 %	0.0721581 ± 0.0006220	0.0350	EXP 150 of 150	3.114591 ± 0.033280	0.2565	EXP 150 of 150	1.0329351 ± 0.0273471	0.0312	EXP 150 of 150	93.467577 ± 0.034063	0.9970	EXP 150 of 150	42.755833 ± 0.032403	0.8431	EXP 150 of 150
13D08099	6.9 %	0.0834003 ± 0.0007169	0.0467	EXP 150 of 150	3.768406 ± 0.030325	0.2611	EXP 150 of 150	1.2728064 ± 0.0261434	0.0669	EXP 150 of 150	112.358915 ± 0.036756	0.9976	EXP 150 of 150	50.229645 ± 0.030249	0.6398	EXP 149 of 150
13D08100	7.1 %	0.0749407 ± 0.0006653	0.0187	EXP 150 of 150	3.153527 ± 0.027702	0.2895	EXP 149 of 150	1.0842572 ± 0.0300144	0.0475	EXP 150 of 150	95.243363 ± 0.035047	0.9969	EXP 150 of 150	43.589495 ± 0.030134	0.8546	EXP 150 of 150
13D08102	7.3 %	0.0634290 ± 0.0005852	0.0449	EXP 150 of 150	2.552564 ± 0.028709	0.1637	EXP 150 of 150	0.8728420 ± 0.0281424	0.0295	EXP 150 of 150	75.466622 ± 0.031318	0.9961	EXP 150 of 150	35.408043 ± 0.030724	0.9310	EXP 150 of 150
13D08103	7.8 %	0.0701814 ± 0.0006316	0.0858	EXP 150 of 150	2.914359 ± 0.030478	0.1389	EXP 150 of 150	0.9497697 ± 0.0264713	0.0103	EXP 150 of 150	83.550870 ± 0.026732	0.9977	EXP 150 of 150	39.175613 ± 0.031146	0.8881	EXP 150 of 150
13D08104	8.1 %	0.0705028 ± 0.0006133	0.0348	EXP 150 of 150	2.825801 ± 0.029170	0.2285	EXP 150 of 150	0.9437130 ± 0.0311980	0.0615	EXP 150 of 150	77.306041 ± 0.030032	0.9966	EXP 150 of 150	37.130699 ± 0.028726	0.9239	EXP 150 of 150
13D08106	8.3 %	0.0596823 ± 0.0005920	0.0888	EXP 150 of 150	2.216553 ± 0.030361	0.0990	EXP 150 of 150	0.7255014 ± 0.0265262	0.0604	EXP 150 of 150	60.338486 ± 0.028997	0.9948	EXP 150 of 150	30.414191 ± 0.030919	0.9454	EXP 150 of 150
13D08107	8.8 %	0.0667672 ± 0.0005828	0.0169	EXP 150 of 150	2.470447 ± 0.029012	0.1893	EXP 150 of 150	0.6911962 ± 0.0261812	0.0020	EXP 150 of 150	61.031473 ± 0.030059	0.9945	EXP 150 of 150	31.958734 ± 0.029619	0.9396	EXP 150 of 150
13D08108	9.3 %	0.0710415 ± 0.0006247	0.0200	EXP 150 of 150	2.533016 ± 0.029398	0.1837	EXP 150 of 150	0.7044029 ± 0.0265704	0.0533	EXP 150 of 150	58.450922 ± 0.029142	0.9943	EXP 150 of 150	32.292132 ± 0.031046	0.9296	EXP 150 of 150
13D08110	9.9 %	0.0784906 ± 0.0007356	0.0003	EXP 150 of 150	2.733219 ± 0.028540	0.2310	EXP 150 of 150	0.7203763 ± 0.0260797	0.1001	EXP 150 of 150	55.745034 ± 0.029430	0.9937	EXP 150 of 150	32.651791 ± 0.027594	0.9354	EXP 150 of 150
13D08111	10.5 %	0.0792379 ± 0.0007434	0.0000	EXP 150 of 150	2.650197 ± 0.029166	0.2035	EXP 150 of 150	0.6086913 ± 0.0269653	0.0276	EXP 150 of 150	49.141644 ± 0.030650	0.9912	EXP 150 of 150	31.314899 ± 0.032162	0.9197	EXP 150 of 150
13D08112	11.2 %	0.0963358 ± 0.0007579	0.0285	EXP 150 of 150	3.233187 ± 0.031303	0.2168	EXP 150 of 150	0.6103073 ± 0.0276054	0.0152	EXP 150 of 150	48.270712 ± 0.028161	0.9923	EXP 150 of 150	34.090302 ± 0.028112	0.9057	EXP 150 of 150
13D08114	11.9 %	0.0943773 ± 0.0007191	0.0025	EXP 150 of 150	3.087120 ± 0.029183	0.1838	EXP 150 of 150	0.5117666 ± 0.0289545	0.0016	EXP 150 of 150	40.006235 ± 0.028547	0.9884	EXP 150 of 150	31.649274 ± 0.028259	0.9181	EXP 150 of 150
13D08115	12.8 %	0.1268487 ± 0.0008507	0.1966	EXP 150 of 150	4.436049 ± 0.030845	0.4203	EXP 150 of 150	0.5133410 ± 0.0255297	0.0074	EXP 150 of 150	39.653471 ± 0.027755	0.9888	EXP 150 of 150	36.024044 ± 0.032578	0.8153	EXP 150 of 150
13D08116	13.9 %	0.1467819 ± 0.0009727	0.2476	EXP 150 of 150	5.289534 ± 0.031174	0.4778	EXP 150 of 150	0.5329621 ± 0.0259037	0.0226	EXP 150 of 150	37.195178 ± 0.028887	0.9864	EXP 150 of 150	38.543896 ± 0.030264	0.7457	EXP 150 of 150
13D08118	15.2 %	0.1851195 ± 0.0010597	0.2927	EXP 148 of 150	7.429915 ± 0.030998	0.6455	EXP 150 of 150	0.5454685 ± 0.0273605	0.0335	EXP 150 of 150	35.374120 ± 0.028357	0.9849	EXP 150 of 150	43.030956 ± 0.028823	0.2999	EXP 150 of 150
13D08119	16.7 %	0.2202262 ± 0.0010239	0.5727	EXP 150 of 150	9.149468 ± 0.028791	0.7657	EXP 149 of 150	0.4778906 ± 0.0296369	0.0062	EXP 150 of 150	30.866190 ± 0.027942	0.9812	EXP 150 of 150	45.177255 ± 0.034255	0.0259	EXP 149 of 150
13D08120	18.2 %	0.2356906 ± 0.0011496	0.5136	EXP 150 of 150	10.070843 ± 0.033124	0.7255	EXP 150 of 150	0.4148185 ± 0.0280594	0.0016	EXP 150 of 150	26.688329 ± 0.026738	0.9768	EXP 150 of 150	46.087839 ± 0.032924	0.0048	EXP 150 of 150
13D08122	19.7 %	0.2764015 ± 0.0010606	0.6381	EXP 150 of 150	12.331186 ± 0.031641	0.8271	EXP 150 of 150	0.4414287 ± 0.0251586	0.0162	EXP 149 of 150	25.850148 ± 0.028766	0.9716	EXP 150 of 150	50.738931 ± 0.032230	0.5580	EXP 150 of 150
13D08124	21.2 %	0.2754067 ± 0.0012911	0.5820	EXP 150 of 150	12.633724 ± 0.027536	0.8756	EXP 150 of 150	0.3736730 ± 0.0279900	0.0154	EXP 150 of 150	20.590944 ± 0.027839	0.9567	EXP 150 of 150	47.375609 ± 0.034376	0.2888	EXP 150 of 150

Project Info		Analyst	Irradiation	X-pos	Y-pos	Z/H-pos	Project	Experiment	Nmb
13D08072	1.8 %	Dan Miggins	13-OSU-05	0.00	0.00	60.70	Galapagos\Balbas (13-19)	13D08071	01
13D08074	2.0 %	Dan Miggins	13-OSU-05	0.00	0.00	60.70	Galapagos\Balbas (13-19)	13D08071	01
13D08075	2.2 %	Dan Miggins	13-OSU-05	0.00	0.00	60.70	Galapagos\Balbas (13-19)	13D08071	01
13D08076	2.4 %	Dan Miggins	13-OSU-05	0.00	0.00	60.70	Galapagos\Balbas (13-19)	13D08071	01
13D08078	2.7 %	Dan Miggins	13-OSU-05	0.00	0.00	60.70	Galapagos\Balbas (13-19)	13D08071	01
13D08079	3.0 %	Dan Miggins	13-OSU-05	0.00	0.00	60.70	Galapagos\Balbas (13-19)	13D08071	01
13D08080	3.3 %	Dan Miggins	13-OSU-05	0.00	0.00	60.70	Galapagos\Balbas (13-19)	13D08071	01
13D08082	3.6 %	Dan Miggins	13-OSU-05	0.00	0.00	60.70	Galapagos\Balbas (13-19)	13D08071	01
13D08083	3.7 %	Dan Miggins	13-OSU-05	0.00	0.00	60.70	Galapagos\Balbas (13-19)	13D08071	01
13D08084	3.9 %	Dan Miggins	13-OSU-05	0.00	0.00	60.70	Galapagos\Balbas (13-19)	13D08071	01
13D08086	4.2 %	Dan Miggins	13-OSU-05	0.00	0.00	60.70	Galapagos\Balbas (13-19)	13D08071	01
13D08087	4.5 %	Dan Miggins	13-OSU-05	0.00	0.00	60.70	Galapagos\Balbas (13-19)	13D08071	01
13D08088	4.7 %	Dan Miggins	13-OSU-05	0.00	0.00	60.70	Galapagos\Balbas (13-19)	13D08071	01
13D08090	4.8 %	Dan Miggins	13-OSU-05	0.00	0.00	60.70	Galapagos\Balbas (13-19)	13D08071	01
13D08091	5.1 %	Dan Miggins	13-OSU-05	0.00	0.00	60.70	Galapagos\Balbas (13-19)	13D08071	01
13D08092	5.4 %	Dan Miggins	13-OSU-05	0.00	0.00	60.70	Galapagos\Balbas (13-19)	13D08071	01
13D08094	5.7 %	Dan Miggins	13-OSU-05	0.00	0.00	60.70	Galapagos\Balbas (13-19)	13D08071	01
13D08095	5.9 %	Dan Miggins	13-OSU-05	0.00	0.00	60.70	Galapagos\Balbas (13-19)	13D08071	01
13D08096	6.1 %	Dan Miggins	13-OSU-05	0.00	0.00	60.70	Galapagos\Balbas (13-19)	13D08071	01
13D08098	6.5 %	Dan Miggins	13-OSU-05	0.00	0.00	60.70	Galapagos\Balbas (13-19)	13D08071	01
13D08099	6.9 %	Dan Miggins	13-OSU-05	0.00	0.00	60.70	Galapagos\Balbas (13-19)	13D08071	01
13D08100	7.1 %	Dan Miggins	13-OSU-05	0.00	0.00	60.70	Galapagos\Balbas (13-19)	13D08071	01
13D08102	7.3 %	Dan Miggins	13-OSU-05	0.00	0.00	60.70	Galapagos\Balbas (13-19)	13D08071	01
13D08103	7.8 %	Dan Miggins	13-OSU-05	0.00	0.00	60.70	Galapagos\Balbas (13-19)	13D08071	01
13D08104	8.1 %	Dan Miggins	13-OSU-05	0.00	0.00	60.70	Galapagos\Balbas (13-19)	13D08071	01
13D08106	8.3 %	Dan Miggins	13-OSU-05	0.00	0.00	60.70	Galapagos\Balbas (13-19)	13D08071	01
13D08107	8.8 %	Dan Miggins	13-OSU-05	0.00	0.00	60.70	Galapagos\Balbas (13-19)	13D08071	01
13D08108	9.3 %	Dan Miggins	13-OSU-05	0.00	0.00	60.70	Galapagos\Balbas (13-19)	13D08071	01
13D08110	9.9 %	Dan Miggins	13-OSU-05	0.00	0.00	60.70	Galapagos\Balbas (13-19)	13D08071	01
13D08111	10.5 %	Dan Miggins	13-OSU-05	0.00	0.00	60.70	Galapagos\Balbas (13-19)	13D08071	01
13D08112	11.2 %	Dan Miggins	13-OSU-05	0.00	0.00	60.70	Galapagos\Balbas (13-19)	13D08071	01
13D08114	11.9 %	Dan Miggins	13-OSU-05	0.00	0.00	60.70	Galapagos\Balbas (13-19)	13D08071	01
13D08115	12.8 %	Dan Miggins	13-OSU-05	0.00	0.00	60.70	Galapagos\Balbas (13-19)	13D08071	01
13D08116	13.9 %	Dan Miggins	13-OSU-05	0.00	0.00	60.70	Galapagos\Balbas (13-19)	13D08071	01
13D08118	15.2 %	Dan Miggins	13-OSU-05	0.00	0.00	60.70	Galapagos\Balbas (13-19)	13D08071	01
13D08119	16.7 %	Dan Miggins	13-OSU-05	0.00	0.00	60.70	Galapagos\Balbas (13-19)	13D08071	01
13D08120	18.2 %	Dan Miggins	13-OSU-05	0.00	0.00	60.70	Galapagos\Balbas (13-19)	13D08071	01
13D08122	19.7 %	Dan Miggins	13-OSU-05	0.00	0.00	60.70	Galapagos\Balbas (13-19)	13D08071	01
13D08124	21.2 %	Dan Miggins	13-OSU-05	0.00	0.00	60.70	Galapagos\Balbas (13-19)	13D08071	01

Sample Parameters	Sample	Material	Location	Standard Name	Standard (in Ma)	%1σ	Standard Reference	Standard 40Ar/39Ar	%1σ	J	%1σ	Air 40Ar/36Ar	%1σ	MDF (lin)	%1σ	Volume Ratio	Sensitivity (mol/volt)	Day	Month	Year	Hour	Min	Resist	
13D08072	1.8 %	44A-Argon-2	Groundmass	Florea Island	FCT-3	28.201	0.082	Kuiper (2008)	10.03039	0.162	0.00156698	0.162	302.744	0.092	0.99401032	0.062	1	4.8E-14	28	DEC	2013	2	37	1
13D08074	2.0 %	44A-Argon-2	Groundmass	Florea Island	FCT-3	28.201	0.082	Kuiper (2008)	10.03039	0.162	0.00156698	0.162	302.744	0.092	0.99401032	0.062	1	4.8E-14	28	DEC	2013	3	2	1
13D08075	2.2 %	44A-Argon-2	Groundmass	Florea Island	FCT-3	28.201	0.082	Kuiper (2008)	10.03039	0.162	0.00156698	0.162	302.744	0.092	0.99401032	0.062	1	4.8E-14	28	DEC	2013	3	14	1
13D08076	2.4 %	44A-Argon-2	Groundmass	Florea Island	FCT-3	28.201	0.082	Kuiper (2008)	10.03039	0.162	0.00156698	0.162	302.744	0.092	0.99401032	0.062	1	4.8E-14	28	DEC	2013	3	27	1
13D08078	2.7 %	44A-Argon-2	Groundmass	Florea Island	FCT-3	28.201	0.082	Kuiper (2008)	10.03039	0.162	0.00156698	0.162	302.744	0.092	0.99401032	0.062	1	4.8E-14	28	DEC	2013	3	52	1
13D08079	3.0 %	44A-Argon-2	Groundmass	Florea Island	FCT-3	28.201	0.082	Kuiper (2008)	10.03039	0.162	0.00156698	0.162	302.744	0.092	0.99401032	0.062	1	4.8E-14	28	DEC	2013	4	4	1
13D08080	3.3 %	44A-Argon-2	Groundmass	Florea Island	FCT-3	28.201	0.082	Kuiper (2008)	10.03039	0.162	0.00156698	0.162	302.744	0.092	0.99401032	0.062	1	4.8E-14	28	DEC	2013	4	17	1
13D08082	3.6 %	44A-Argon-2	Groundmass	Florea Island	FCT-3	28.201	0.082	Kuiper (2008)	10.03039	0.162	0.00156698	0.162	302.744	0.092	0.99401032	0.062	1	4.8E-14	28	DEC	2013	4	41	1
13D08083	3.7 %	44A-Argon-2	Groundmass	Florea Island	FCT-3	28.201	0.082	Kuiper (2008)	10.03039	0.162	0.00156698	0.162	302.744	0.092	0.99401032	0.062	1	4.8E-14	28	DEC	2013	4	54	1
13D08084	3.9 %	44A-Argon-2	Groundmass	Florea Island	FCT-3	28.201	0.082	Kuiper (2008)	10.03039	0.162	0.00156698	0.162	302.744	0.092	0.99401032	0.062	1	4.8E-14	28	DEC	2013	5	6	1
13D08086	4.2 %	44A-Argon-2	Groundmass	Florea Island	FCT-3	28.201	0.082	Kuiper (2008)	10.03039	0.162	0.00156698	0.162	302.744	0.092	0.99401032	0.062	1	4.8E-14	28	DEC	2013	5	31	1
13D08087	4.5 %	44A-Argon-2	Groundmass	Florea Island	FCT-3	28.201	0.082	Kuiper (2008)	10.03039	0.162	0.00156698	0.162	302.744	0.092	0.99401032	0.062	1	4.8E-14	28	DEC	2013	5	44	1
13D08088	4.7 %	44A-Argon-2	Groundmass	Florea Island	FCT-3	28.201	0.082	Kuiper (2008)	10.03039	0.162	0.00156698	0.162	302.744	0.092	0.99401032	0.062	1	4.8E-14	28	DEC	2013	5	56	1
13D08090	4.8 %	44A-Argon-2	Groundmass	Florea Island	FCT-3	28.201	0.082	Kuiper (2008)	10.03039	0.162	0.00156698	0.162	302.744	0.092	0.99401032	0.062	1	4.8E-14	28	DEC	2013	6	21	1
13D08091	5.1 %	44A-Argon-2	Groundmass	Florea Island	FCT-3	28.201	0.082	Kuiper (2008)	10.03039	0.162	0.00156698	0.162	302.744	0.092	0.99401032	0.062	1	4.8E-14	28	DEC	2013	6	33	1
13D08092	5.4 %	44A-Argon-2	Groundmass	Florea Island	FCT-3	28.201	0.082	Kuiper (2008)	10.03039	0.162	0.00156698	0.162	302.744	0.092	0.99401032	0.062	1	4.8E-14	28	DEC	2013	6	46	1
13D08094	5.7 %	44A-Argon-2	Groundmass	Florea Island	FCT-3	28.201	0.082	Kuiper (2008)	10.03039	0.162	0.00156698	0.162	302.744	0.092	0.99401032	0.062	1	4.8E-14	28	DEC	2013	7	11	1
13D08095	5.9 %	44A-Argon-2	Groundmass	Florea Island	FCT-3	28.201	0.082	Kuiper (2008)	10.03039	0.162	0.00156698	0.162	302.744	0.092	0.99401032	0.062	1	4.8E-14	28	DEC	2013	7	23	1
13D08096	6.1 %	44A-Argon-2	Groundmass	Florea Island	FCT-3	28.201	0.082	Kuiper (2008)	10.03039	0.162	0.00156698	0.162	302.744	0.092	0.99401032	0.062	1	4.8E-14	28	DEC	2013	7	35	1
13D08098	6.5 %	44A-Argon-2	Groundmass	Florea Island	FCT-3	28.201	0.082	Kuiper (2008)	10.03039	0.162	0.00156698	0.162	302.744	0.092	0.99401032	0.062	1	4.8E-14	28	DEC	2013	8	0	1
13D08099	6.9 %	44A-Argon-2	Groundmass	Florea Island	FCT-3	28.201	0.082	Kuiper (2008)	10.03039	0.162	0.00156698	0.162	302.744	0.092	0.99401032	0.062	1	4.8E-14	28	DEC	2013	8	13	1
13D08100	7.1 %	44A-Argon-2	Groundmass	Florea Island	FCT-3	28.201	0.082	Kuiper (2008)	10.03039	0.162	0.00156698	0.162	302.744	0.092	0.99401032	0.062	1	4.8E-14	28	DEC	2013	8	25	1
13D08102	7.3 %	44A-Argon-2	Groundmass	Florea Island	FCT-3	28.201	0.082	Kuiper (2008)	10.03039	0.162	0.00156698	0.162	302.744	0.092	0.99401032	0.062	1	4.8E-14	28	DEC	2013	8	50	1
13D08103	7.8 %	44A-Argon-2	Groundmass	Florea Island	FCT-3	28.201	0.082	Kuiper (2008)	10.03039	0.162	0.00156698	0.162	302.744	0.092	0.99401032	0.062	1	4.8E-14	28	DEC	2013	9	2	1
13D08104	8.1 %	44A-Argon-2	Groundmass	Florea Island	FCT-3	28.201	0.082	Kuiper (2008)	10.03039	0.162	0.00156698	0.162	302.744	0.092	0.99401032	0.062	1	4.8E-14	28	DEC	2013	9	15	1
13D08106	8.3 %	44A-Argon-2	Groundmass	Florea Island	FCT-3	28.201	0.082	Kuiper (2008)	10.03039	0.162	0.00156698	0.162	302.744	0.092	0.99401032	0.062	1	4.8E-14	28	DEC	2013	9	40	1
13D08107	8.8 %	44A-Argon-2	Groundmass	Florea Island	FCT-3	28.201	0.082	Kuiper (2008)	10.03039	0.162	0.00156698	0.162	302.744	0.092	0.99401032	0.062	1	4.8E-14	28	DEC	2013	9	52	1
13D08108	9.3 %	44A-Argon-2	Groundmass	Florea Island	FCT-3	28.201	0.082	Kuiper (2008)	10.03039	0.162	0.00156698	0.162	302.744	0.092	0.99401032	0.062	1	4.8E-14	28	DEC	2013	10	5	1
13D08110	9.9 %	44A-Argon-2	Groundmass	Florea Island	FCT-3	28.201	0.082	Kuiper (2008)	10.03039	0.162	0.00156698	0.162	302.744	0.092	0.99401032	0.062	1	4.8E-14	28	DEC	2013	10	29	1
13D08111	10.5 %	44A-Argon-2	Groundmass	Florea Island	FCT-3	28.201	0.082	Kuiper (2008)	10.03039	0.162	0.00156698	0.162	302.744	0.092	0.99401032	0.062	1	4.8E-14	28	DEC	2013	10	42	1
13D08112	11.2 %	44A-Argon-2	Groundmass	Florea Island	FCT-3	28.201	0.082	Kuiper (2008)	10.03039	0.162	0.00156698	0.162	302.744	0.092	0.99401032	0.062	1	4.8E-14	28	DEC	2013	10	54	1
13D08114	11.9 %	44A-Argon-2	Groundmass	Florea Island	FCT-3	28.201	0.082	Kuiper (2008)	10.03039	0.162	0.00156698	0.162	302.744	0.092	0.99401032	0.062	1	4.8E-14	28	DEC	2013	11	19	1
13D08115	12.8 %	44A-Argon-2	Groundmass	Florea Island	FCT-3	28.201	0.082	Kuiper (2008)	10.03039	0.162	0.00156698	0.162	302.744	0.092	0.99401032	0.062	1	4.8E-14	28	DEC	2013	11	32	1
13D08116	13.9 %	44A-Argon-2	Groundmass	Florea Island	FCT-3	28.201	0.082	Kuiper (2008)	10.03039	0.162	0.00156698	0.162	302.744	0.092	0.99401032	0.062	1	4.8E-14	28	DEC	2013	11	44	1
13D08118	15.2 %	44A-Argon-2	Groundmass	Florea Island	FCT-3	28.201	0.082	Kuiper (2008)	10.03039	0.162	0.00156698	0.162	302.744	0.092	0.99401032	0.062	1	4.8E-14	28	DEC	2013	12	9	1
13D08119	16.7 %	44A-Argon-2	Groundmass	Florea Island	FCT-3	28.201	0.082	Kuiper (2008)	10.03039	0.162	0.00156698	0.162	302.744	0.092	0.99401032	0.062	1	4.8E-14	28	DEC	2013	12	21	1
13D08120	18.2 %	44A-Argon-2	Groundmass	Florea Island	FCT-3	28.201	0.082	Kuiper (2008)	10.03039	0.162	0.00156698	0.162	302.744	0.092	0.99401032	0.062	1	4.8E-14	28	DEC	2013	12	34	1
13D08122	19.7 %	44A-Argon-2	Groundmass	Florea Island	FCT-3	28.201	0.082	Kuiper (2008)	10.03039	0.162	0.00156698	0.162	302.744	0.092	0.99401032	0.062	1	4.8E-14	28	DEC	2013	12	59	1
13D08124	21.2 %	44A-Argon-2	Groundmass	Florea Island	FCT-3	28.201	0.082	Kuiper (2008)	10.03039	0.162	0.00156698	0.162	302.744	0.092	0.99401032	0.062	1	4.8E-14	28	DEC	2013	13	23	1

13D08071.AGE >>> 44A-ARGON-2 >>> GALAPAGOS | BALBAS (13-19) PROJECT



Ar-Ages in ka

WEIGHTED PLATEAU
927.7 ± 7.8

TOTAL FUSION
1051.5 ± 12.8

NORMAL ISOCHRON
929.2 ± 15.2

INVERSE ISOCHRON
931.5 ± 15.9

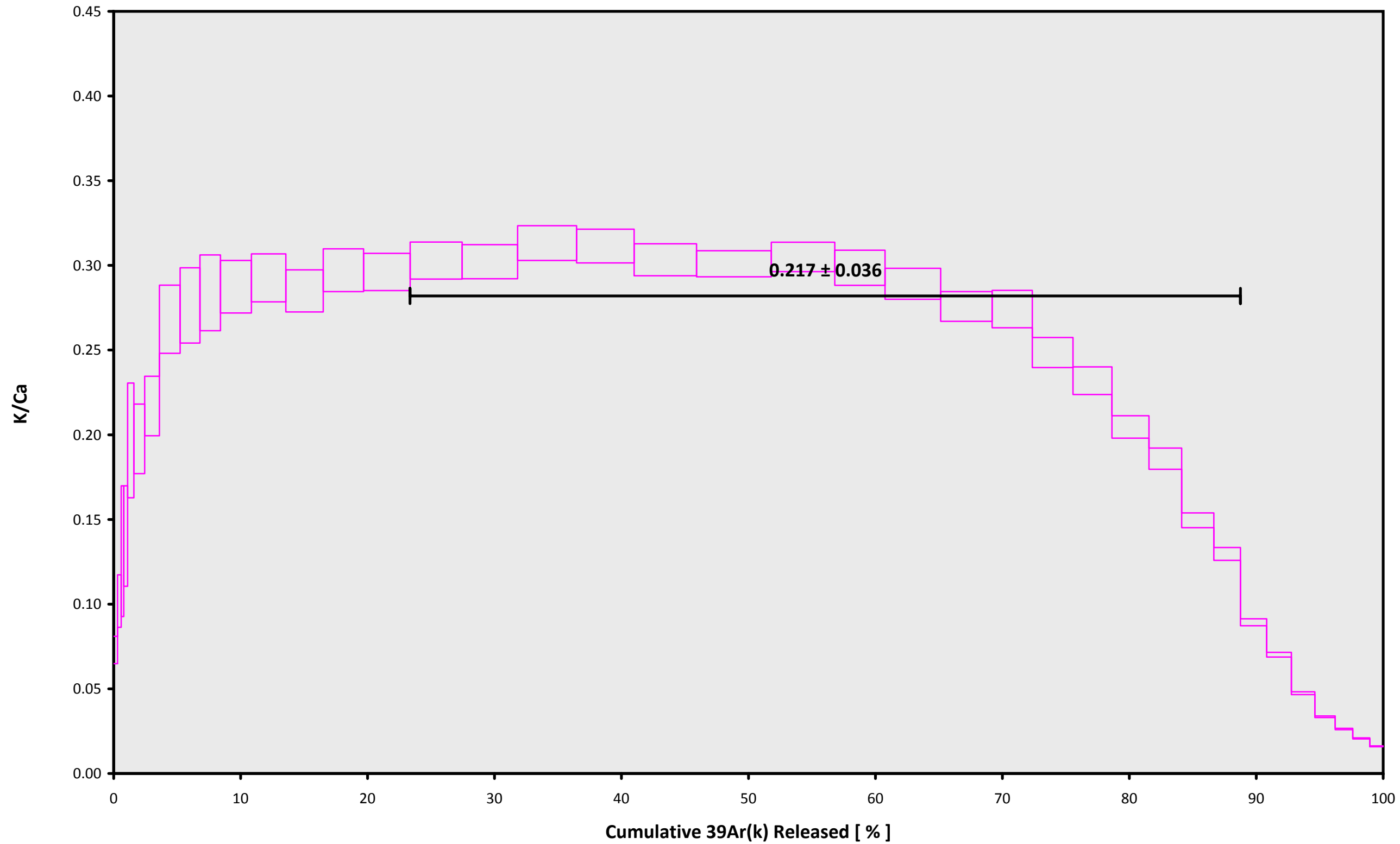
MSWD (PROBABILITY)
1.34 (16%)

Sample Info

Groundmass
Floreana Island
Dan Miggins

IRR = 13-OSU-05
J = 0.00156698 ± 0.00000254

13D08071.AGE >>> 44A-ARGON-2 >>> GALAPAGOS | BALBAS (13-19) PROJECT



Ar-Ages in ka

WEIGHTED PLATEAU

927.7 ± 7.8

TOTAL FUSION

1051.5 ± 12.8

NORMAL ISOCHRON

929.2 ± 15.2

INVERSE ISOCHRON

931.5 ± 15.9

Sample Info

Groundmass

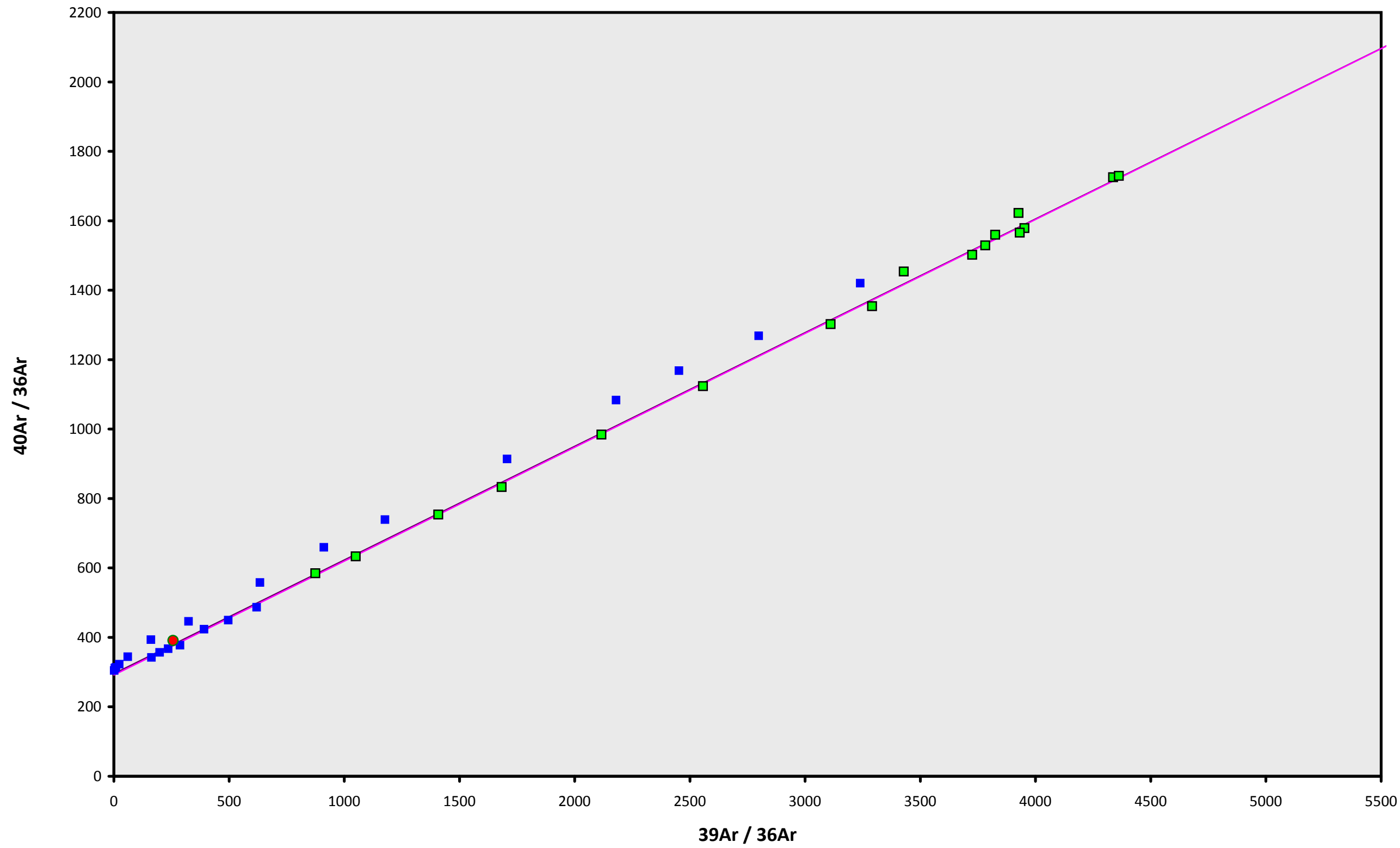
Floreana Island

Dan Miggins

IRR = 13-OSU-05

J = $0.00156698 \pm 0.00000254$

13D08071.AGE >>> 44A-ARGON-2 >>> GALAPAGOS | BALBAS (13-19) PROJECT



Ar-Ages in ka

WEIGHTED PLATEAU
927.7 ± 7.8

TOTAL FUSION
1051.5 ± 12.8

NORMAL ISOCHRON
929.2 ± 15.2

INVERSE ISOCHRON
931.5 ± 15.9

MSWD (PROBABILITY)
1.25 (22%)

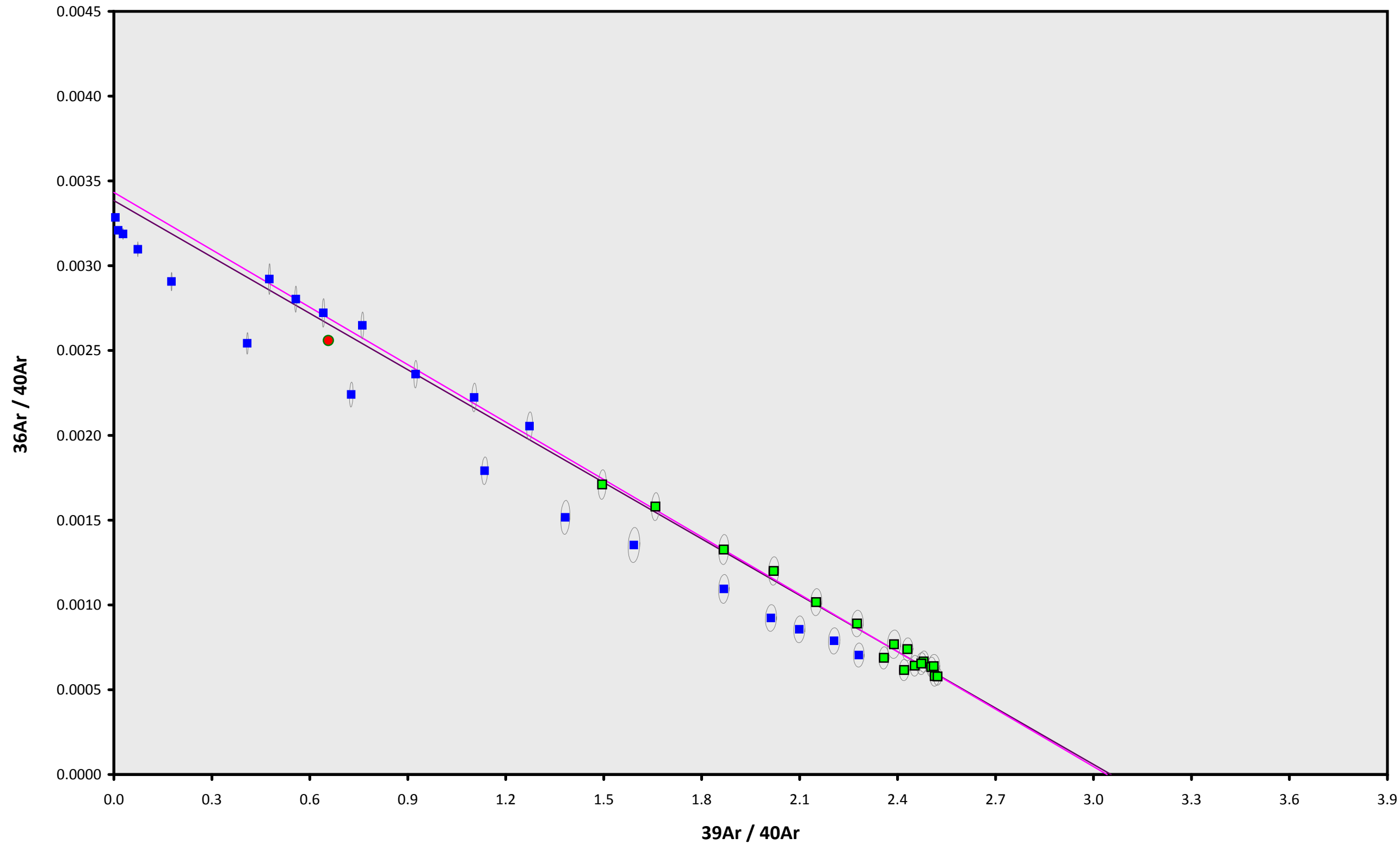
40AR/36AR INTERCEPT
291.6 ± 14.4

Sample Info

Groundmass
Floreana Island
Dan Miggins

IRR = 13-OSU-05
J = 0.00156698 ± 0.00000254

13D08071.AGE >>> 44A-ARGON-2 >>> GALAPAGOS | BALBAS (13-19) PROJECT



Ar-Ages in ka

WEIGHTED PLATEAU

927.7 ± 7.8

TOTAL FUSION

1051.5 ± 12.8

NORMAL ISOCHRON

929.2 ± 15.2

INVERSE ISOCHRON

931.5 ± 15.9

MSWD (PROBABILITY)

1.41 (13%)

SPREADING FACTOR

33.8%

40AR/36AR INTERCEPT

291.3 ± 15.3

Sample Info

Groundmass

Floreana Island

Dan Miggins

IRR = 13-OSU-05

$J = 0.00156698 \pm 0.00000254$