

Relative Abundances		36Ar [fA]	%1σ	37Ar [fA]	%1σ	38Ar [fA]	%1σ	39Ar [fA]	%1σ	40Ar [fA]	%1σ	40(r)/39(k) ± 2σ	Age ± 2σ (Ma)	40Ar(r) (%)	39Ar(k) (%)	K/Ca ± 2σ
13D05128	1.8 %	0.1049403	0.916	27.9661	3.296	0.312474	12.383	25.4151	0.169	302.464	0.026	10.77160 ± 0.04352	30.67 ± 0.12	90.44	1.47	0.390 ± 0.026
13D05130	2.0 %	0.0741042	1.293	62.4833	1.447	0.637425	5.710	58.6303	0.097	608.588	0.014	10.09391 ± 0.02213	28.76 ± 0.06	97.17	3.40	0.403 ± 0.012
13D05131	2.2 %	0.0311285	2.178	30.6429	2.946	0.351432	11.290	29.2250	0.155	295.872	0.025	9.89489 ± 0.03433	28.19 ± 0.10	97.67	1.69	0.410 ± 0.024
13D05132	2.4 %	0.0324192	2.106	40.7536	2.176	0.404142	9.396	38.9461	0.126	389.465	0.020	9.83960 ± 0.02737	28.04 ± 0.08	98.33	2.26	0.411 ± 0.018
13D05134	2.7 %	0.0554293	1.496	98.8031	1.009	1.041181	3.675	87.9528	0.082	867.577	0.012	9.76988 ± 0.01725	27.84 ± 0.05	98.97	5.10	0.382 ± 0.008
13D05135	3.0 %	0.0489364	1.714	97.9424	1.019	0.947140	3.977	81.8334	0.082	804.835	0.011	9.75658 ± 0.01736	27.80 ± 0.05	99.12	4.74	0.359 ± 0.007
13D05136	3.3 %	0.0179120	3.505	34.9730	2.498	0.275597	13.945	28.3228	0.165	278.801	0.027	9.75830 ± 0.03553	27.81 ± 0.10	99.05	1.64	0.348 ± 0.017
13D05138	3.6 %	0.0510681	1.518	127.9219	0.819	1.135329	3.182	96.2438	0.077	942.874	0.010	9.74945 ± 0.01594	27.78 ± 0.05	99.43	5.58	0.323 ± 0.005
13D05139	3.9 %	0.0493593	1.613	128.9851	0.826	1.011776	3.707	91.0227	0.079	889.247	0.011	9.72627 ± 0.01645	27.72 ± 0.05	99.46	5.27	0.303 ± 0.005
13D05140	4.2 %	0.0672976	1.339	190.0315	0.676	1.514224	2.473	126.2398	0.073	1229.826	0.008	9.70897 ± 0.01497	27.67 ± 0.04	99.56	7.31	0.285 ± 0.004
13D05142	4.5 %	0.0506326	1.610	145.6376	0.769	1.090827	3.451	93.4256	0.080	908.364	0.011	9.69176 ± 0.01660	27.62 ± 0.05	99.58	5.41	0.276 ± 0.004
13D05143	4.9 %	0.0328362	2.199	95.1175	1.073	0.717095	5.130	59.4675	0.096	576.668	0.015	9.66652 ± 0.02037	27.55 ± 0.06	99.58	3.45	0.269 ± 0.006
13D05144	5.3 %	0.0441920	1.678	119.5569	0.864	0.876854	4.443	73.1893	0.087	709.924	0.013	9.65679 ± 0.01813	27.52 ± 0.05	99.45	4.24	0.263 ± 0.005
13D05146	5.7 %	0.1375171	0.859	396.1273	0.521	2.843138	1.336	236.5134	0.066	2277.802	0.005	9.59778 ± 0.01323	27.35 ± 0.04	99.54	13.70	0.256 ± 0.003
13D05147	6.1 %	0.0810915	1.103	231.8543	0.618	1.682056	2.356	137.0907	0.071	1316.106	0.008	9.56567 ± 0.01428	27.26 ± 0.04	99.53	7.94	0.254 ± 0.003
13D05148	6.5 %	0.0402141	1.948	105.8953	0.970	0.730058	5.526	63.4940	0.095	604.727	0.014	9.47511 ± 0.01988	27.01 ± 0.06	99.37	3.68	0.258 ± 0.005
13D05150	6.9 %	0.0437393	1.797	117.8581	0.873	0.891977	4.524	72.1778	0.088	686.538	0.013	9.46782 ± 0.01822	26.99 ± 0.05	99.43	4.18	0.263 ± 0.005
13D05151	7.3 %	0.0409343	1.674	102.8005	0.973	0.738476	5.113	59.3354	0.097	554.346	0.015	9.28214 ± 0.01971	26.46 ± 0.06	99.24	3.44	0.248 ± 0.005
13D05152	7.8 %	0.0270333	2.338	62.6185	1.471	0.493565	7.625	35.8957	0.131	334.756	0.024	9.24771 ± 0.02715	26.36 ± 0.08	99.05	2.08	0.246 ± 0.007
13D05154	8.4 %	0.0438446	1.631	99.2929	1.011	0.627199	6.126	46.4192	0.111	417.653	0.020	8.89576 ± 0.02236	25.37 ± 0.06	98.73	2.69	0.201 ± 0.004
13D05155	9.2 %	0.0582033	1.496	142.7744	0.802	0.602905	6.727	44.0676	0.114	373.032	0.022	8.34419 ± 0.02301	23.81 ± 0.07	98.36	2.55	0.132 ± 0.002
13D05156	10.2 %	0.1003461	0.929	246.0418	0.599	0.673024	5.823	44.9353	0.114	366.878	0.022	7.96139 ± 0.02290	22.72 ± 0.06	97.15	2.60	0.078 ± 0.001
13D05158	11.7 %	0.0914290	1.063	242.0930	0.611	0.482465	7.804	28.5944	0.161	226.234	0.033	7.67364 ± 0.03360	21.90 ± 0.10	96.43	1.65	0.050 ± 0.001
13D05159	13.7 %	0.1449319	0.808	409.9147	0.518	0.455077	8.453	27.6598	0.163	223.155	0.034	7.75985 ± 0.03853	22.15 ± 0.11	95.22	1.59	0.029 ± 0.000
13D05160	16.2 %	0.1165834	0.900	343.9642	0.537	0.409819	9.726	27.2614	0.166	232.025	0.032	8.30749 ± 0.03821	23.70 ± 0.11	96.78	1.57	0.034 ± 0.000
13D05162	19.0 %	0.0739087	1.207	212.0373	0.634	0.188366	20.358	13.3542	0.303	117.115	0.063	8.47105 ± 0.06853	24.16 ± 0.19	95.56	0.77	0.027 ± 0.000
Σ		1.6600324	0.262	3914.0874	0.161	21.133619	0.926	1726.7130	0.020	16534.873	0.003					

**Information on Analysis and Constants Used in Calculations**

Project = **MV1203 (13-INT-04)**  
Sample = **MV1203-D37-03 2X LCH**  
Material = **Groundmass**  
Location = **Omura Guyot**  
Region = **Walvis Ridge**  
Analyst = **Susan Schnur**  
Irradiation = **13-OSU-05**  
Position = X: | Y: | Z/H: **57.7 mm**  
FCT-NM Age = **28.201 ± 0.023 Ma**  
FCT-NM Reference = **Kuiper et al (2008)**  
FCT-NM 40Ar/39Ar Ratio = **9.89712 ± 0.01158**  
FCT-NM J-value = **0.00158808 ± 0.00000186**  
Air Shot 40Ar/36Ar = **302.7680 ± 0.2846**  
Air Shot MDF = **0.99399095 ± 0.00062291 (LIN)**  
Experiment Type = **Incremental Heating**  
Extraction Method = **Bulk Laser Heating**  
Heating = **77 sec**  
Isolation = **5.52 min**  
Instrument = **ARGUS-VI-D**  
Preferred Age = **No Age**  
Age Classification = **Undefined**  
IGSN = **IESS10025**  
Rock Class = **Igneous>Volcanic>Mafic**  
Lithology = **Basalt**  
Lat-Lon = **37°33.0'S - 8°27.1'W**

Age Equations = **Min et al. (2000)**  
Negative Intensities = **Allowed**  
Collector Calibrations = **40Ar 36Ar**  
Decay 40K = **5.530 ± 0.048 E-10 1/a**  
Decay 39Ar = **2.940 ± 0.016 E-07 1/h**  
Decay 37Ar = **8.230 ± 0.012 E-04 1/h**  
Decay 36Cl = **2.257 ± 0.015 E-06 1/a**  
Decay 40K(EC,β<sup>+</sup>) = **0.580 ± 0.009 E-10 1/a**  
Decay 40K(β<sup>-</sup>) = **4.950 ± 0.043 E-10 1/a**  
Atmospheric 40/36(a) = **295.50**  
Atmospheric 38/36(a) = **0.1869**  
Production 39/37(ca) = **0.0006756 ± 0.0000089**  
Production 38/37(ca) = **0.0000718 ± 0.0000092**  
Production 36/37(ca) = **0.0002663 ± 0.0000004**  
Production 40/39(k) = **0.003823 ± 0.000102**  
Production 38/39(k) = **0.012031 ± 0.000019**  
Production 36/38(cl) = **262.80 ± 1.71**  
Scaling Ratio K/Ca = **0.430**  
Abundance Ratio 40K/K = **1.1700 ± 0.0100 E-04**  
Atomic Weight K = **39.0983 ± 0.0001 g**

Results	40(a)/36(a) ± 2σ	40(r)/39(k) ± 2σ	Age ± 2σ (Ma)	MSWD	39Ar(k) (%n)	K/Ca ± 2σ
<b>Age Plateau</b> <b>Cannot Calculate</b>						
<b>Total Fusion Age</b>		9.48094 ± 0.00412 ± 0.04%	27.02 ± 0.06 ± 0.24%		26	0.189 ± 0.001
			Full External Error ± 0.61 Analytical Error ± 0.01			
<b>Normal Isochron</b> <b>Cannot Calculate</b>						
<b>Inverse Isochron</b> <b>Cannot Calculate</b>						
<b>Notes</b>						
Strong recoil effect, barely any plateau, 40/36 intercept poor, but all ages concordant.						

Incremental Heating		36Ar(a) [fA]	37Ar(ca) [fA]	38Ar(cl) [fA]	39Ar(k) [fA]	40Ar(r) [fA]	Age ± 2σ (Ma)	40Ar(r) (%)	39Ar(k) (%)	K/Ca ± 2σ
13D05128	1.8 %	0.0974929	27.9661	0.0000000	25.3962	273.558	30.67 ± 0.12	90.44	1.47	0.390 ± 0.026
13D05130	2.0 %	0.0574649	62.4833	0.0000000	58.5881	591.383	28.76 ± 0.06	97.17	3.40	0.403 ± 0.012
13D05131	2.2 %	0.0229683	30.6429	0.0000000	29.2043	288.973	28.19 ± 0.10	97.67	1.69	0.410 ± 0.024
13D05132	2.4 %	0.0215665	40.7536	0.0000000	38.9186	382.943	28.04 ± 0.08	98.33	2.26	0.411 ± 0.018
13D05134	2.7 %	0.0291180	98.8031	0.0000000	87.8861	858.637	27.84 ± 0.05	98.97	5.10	0.382 ± 0.008
13D05135	3.0 %	0.0228543	97.9424	0.0000000	81.7672	797.769	27.80 ± 0.05	99.12	4.74	0.359 ± 0.007
13D05136	3.3 %	0.0085987	34.9730	0.0000000	28.2992	276.152	27.81 ± 0.10	99.05	1.64	0.348 ± 0.017
13D05138	3.6 %	0.0170025	127.9219	0.0000000	96.1574	937.482	27.78 ± 0.05	99.43	5.58	0.323 ± 0.005
13D05139	3.9 %	0.0150106	128.9851	0.0000000	90.9355	884.464	27.72 ± 0.05	99.46	5.27	0.303 ± 0.005
13D05140	4.2 %	0.0166922	190.0315	0.0000000	126.1114	1224.411	27.67 ± 0.04	99.56	7.31	0.285 ± 0.004
13D05142	4.5 %	0.0118493	145.6376	0.0000000	93.3273	904.506	27.62 ± 0.05	99.58	5.41	0.276 ± 0.004
13D05143	4.9 %	0.0075064	95.1175	0.0000000	59.4032	574.223	27.55 ± 0.06	99.58	3.45	0.269 ± 0.006
13D05144	5.3 %	0.0123540	119.5569	0.0000000	73.1085	705.994	27.52 ± 0.05	99.45	4.24	0.263 ± 0.005
13D05146	5.7 %	0.0320284	396.1273	0.0000000	236.2458	2267.435	27.35 ± 0.04	99.54	13.70	0.256 ± 0.003
13D05147	6.1 %	0.0193452	231.8543	0.0143394	136.9340	1309.866	27.26 ± 0.04	99.53	7.94	0.254 ± 0.003
13D05148	6.5 %	0.0120142	105.8953	0.0000000	63.4224	600.934	27.01 ± 0.06	99.37	3.68	0.258 ± 0.005
13D05150	6.9 %	0.0123503	117.8581	0.0137925	72.0982	682.613	26.99 ± 0.05	99.43	4.18	0.263 ± 0.005
13D05151	7.3 %	0.0135547	102.8005	0.0155337	59.2659	550.114	26.46 ± 0.06	99.24	3.44	0.248 ± 0.005
13D05152	7.8 %	0.0103442	62.6185	0.0557830	35.8534	331.562	26.36 ± 0.08	99.05	2.08	0.246 ± 0.007
13D05154	8.4 %	0.0173882	99.2929	0.0591567	46.3521	412.338	25.37 ± 0.06	98.73	2.69	0.201 ± 0.004
13D05155	9.2 %	0.0201676	142.7744	0.0598668	43.9712	366.904	23.81 ± 0.07	98.36	2.55	0.132 ± 0.002
13D05156	10.2 %	0.0347978	246.0418	0.1102388	44.7690	356.424	22.72 ± 0.06	97.15	2.60	0.078 ± 0.001
13D05158	11.7 %	0.0269303	242.0930	0.1179983	28.4308	218.168	21.90 ± 0.10	96.43	1.65	0.050 ± 0.001
13D05159	13.7 %	0.0357494	409.9147	0.0895206	27.3828	212.487	22.15 ± 0.11	95.22	1.59	0.029 ± 0.000
13D05160	16.2 %	0.0249720	343.9642	0.0552698	27.0290	224.543	23.70 ± 0.11	96.78	1.57	0.034 ± 0.000
13D05162	19.0 %	0.0174405	212.0373	0.0109412	13.2109	111.911	24.16 ± 0.19	95.56	0.77	0.027 ± 0.000
Σ		0.6175612	3914.0874	0.6024408	1724.0687	16345.792				

Information on Analysis	Results	40(r)/39(k) ± 2σ	Age ± 2σ (Ma)	MSWD	39Ar(k) (%),n	K/Ca ± 2σ
Project = MV1203 (13-INT-04) Sample = MV1203-D37-03 2X LCH Material = Groundmass Location = Omura Guyot Region = Walvis Ridge Analyst = Susan Schnur Irradiation = 13-OSU-05 J = 0.00158808 ± 0.00000186 FCT-NM = 28.201 ± 0.023 Ma	Age Plateau Cannot Calculate					
	Total Fusion Age	9.48094 ± 0.00412 ± 0.04%	27.02 ± 0.06 ± 0.24%		26	0.189 ± 0.001
			Full External Error ± 0.61 Analytical Error ± 0.01			

Normal Isochron		39(k)/36(a) ± 2σ	40(a+r)/36(a) ± 2σ	r.i.
13D05128	1.8 %	260.49 ± 5.37	3101.42 ± 63.12	0.9862
13D05130	2.0 %	1019.55 ± 35.11	10586.70 ± 364.01	0.9984
13D05131	2.2 %	1271.50 ± 79.76	12876.89 ± 806.77	0.9987
13D05132	2.4 %	1804.59 ± 121.02	18051.91 ± 1209.77	0.9993
13D05134	2.7 %	3018.27 ± 180.79	29783.69 ± 1783.36	0.9996
13D05135	3.0 %	3577.75 ± 275.79	35202.14 ± 2712.97	0.9998
13D05136	3.3 %	3291.09 ± 512.73	32410.94 ± 5048.26	0.9998
13D05138	3.6 %	5655.49 ± 549.36	55433.38 ± 5383.95	0.9999
13D05139	3.9 %	6058.10 ± 683.39	59218.26 ± 6679.50	0.9999
13D05140	4.2 %	7555.11 ± 875.24	73647.83 ± 8531.24	0.9999
13D05142	4.5 %	7876.19 ± 1156.82	76629.72 ± 11254.33	0.9999
13D05143	4.9 %	7913.70 ± 1628.65	76793.43 ± 15803.57	1.0000
13D05144	5.3 %	5917.82 ± 759.21	57442.63 ± 7368.77	0.9999
13D05146	5.7 %	7376.14 ± 604.45	71090.06 ± 5824.83	0.9999
13D05147	6.1 %	7078.46 ± 714.89	68005.73 ± 6867.55	0.9999
13D05148	6.5 %	5278.96 ± 730.29	50314.26 ± 6959.77	0.9999
13D05150	6.9 %	5837.79 ± 788.35	55566.63 ± 7503.20	0.9999
13D05151	7.3 %	4372.36 ± 475.19	40880.40 ± 4442.22	0.9998
13D05152	7.8 %	3466.05 ± 454.78	32348.55 ± 4243.62	0.9998
13D05154	8.4 %	2665.72 ± 234.47	24009.14 ± 2111.13	0.9997
13D05155	9.2 %	2180.28 ± 199.92	18488.20 ± 1694.75	0.9997
13D05156	10.2 %	1286.55 ± 75.21	10538.23 ± 615.56	0.9992
13D05158	11.7 %	1055.72 ± 82.66	8396.69 ± 656.94	0.9991
13D05159	13.7 %	765.97 ± 56.23	6239.29 ± 457.62	0.9989
13D05160	16.2 %	1082.37 ± 101.25	9287.30 ± 868.20	0.9993
13D05162	19.0 %	757.49 ± 83.93	6712.20 ± 742.60	0.9984

Results	40(a)/36(a) ± 2σ	40(r)/39(k) ± 2σ	Age ± 2σ (Ma)	MSWD
---------	------------------	------------------	---------------	------

Normal Isochron  
 Cannot Calculate

Inverse Isochron		39(k)/40(a+r) ± 2σ	36(a)/40(a+r) ± 2σ	r.i.
13D05128	1.8 %	0.0839913 ± 0.0002870	0.00032243 ± 0.00000656	0.0039
13D05130	2.0 %	0.0963043 ± 0.0001884	0.00009446 ± 0.00000325	0.0013
13D05131	2.2 %	0.0987431 ± 0.0003101	0.00007766 ± 0.00000487	0.0013
13D05132	2.4 %	0.0999665 ± 0.0002546	0.00005540 ± 0.00000371	0.0009
13D05134	2.7 %	0.1013399 ± 0.0001682	0.00003358 ± 0.00000201	0.0005
13D05135	3.0 %	0.1016346 ± 0.0001683	0.00002841 ± 0.00000219	0.0004
13D05136	3.3 %	0.1015426 ± 0.0003397	0.00003085 ± 0.00000481	0.0006
13D05138	3.6 %	0.1020231 ± 0.0001581	0.00001804 ± 0.00000175	0.0003
13D05139	3.9 %	0.1023013 ± 0.0001630	0.00001689 ± 0.00000190	0.0003
13D05140	4.2 %	0.1025843 ± 0.0001508	0.00001358 ± 0.00000157	0.0002
13D05142	4.5 %	0.1027825 ± 0.0001661	0.00001305 ± 0.00000192	0.0002
13D05143	4.9 %	0.1030517 ± 0.0002010	0.00001302 ± 0.00000268	0.0002
13D05144	5.3 %	0.1030213 ± 0.0001809	0.00001741 ± 0.00000223	0.0003
13D05146	5.7 %	0.1037577 ± 0.0001385	0.00001407 ± 0.00000115	0.0001
13D05147	6.1 %	0.1040862 ± 0.0001484	0.00001470 ± 0.00000148	0.0002
13D05148	6.5 %	0.1049198 ± 0.0002027	0.00001988 ± 0.00000275	0.0003
13D05150	6.9 %	0.1050593 ± 0.0001874	0.00001800 ± 0.00000243	0.0003
13D05151	7.3 %	0.1069550 ± 0.0002107	0.00002446 ± 0.00000266	0.0004
13D05152	7.8 %	0.1071470 ± 0.0002866	0.00003091 ± 0.00000406	0.0007
13D05154	8.4 %	0.1110295 ± 0.0002511	0.00004165 ± 0.00000366	0.0008
13D05155	9.2 %	0.1179284 ± 0.0002736	0.00005409 ± 0.00000496	0.0009
13D05156	10.2 %	0.1220840 ± 0.0002844	0.00009489 ± 0.00000554	0.0014
13D05158	11.7 %	0.1257301 ± 0.0004168	0.00011909 ± 0.00000932	0.0017
13D05159	13.7 %	0.1227651 ± 0.0004130	0.00016027 ± 0.00001176	0.0018
13D05160	16.2 %	0.1165433 ± 0.0003984	0.00010767 ± 0.00001007	0.0013
13D05162	19.0 %	0.1128521 ± 0.0007078	0.00014898 ± 0.00001648	0.0023

Results	40(a)/36(a) ± 2σ	40(r)/39(k) ± 2σ	Age ± 2σ (Ma)	MSWD
---------	------------------	------------------	---------------	------

Inverse Isochron  
 Cannot Calculate

Degassing Patterns		36Ar(a) [fA]	%1σ	36Ar(c) [fA]	%1σ	36Ar(ca) [fA]	%1σ	36Ar(cl) [fA]	%1σ	37Ar(ca) [fA]	%1σ	38Ar(a) [fA]	%1σ	38Ar(c) [fA]	%1σ	38Ar(k) [fA]	%1σ	38Ar(ca) [fA]	%1σ	38Ar(cl) [fA]	%1σ	39Ar(k) [fA]	%1σ	39Ar(ca) [fA]	%1σ	40Ar(r) [fA]	%1σ	40Ar(a) [fA]	%1σ	40Ar(c) [fA]	%1σ	40Ar(k) [fA]	%1σ	
13D05128	1.8 %	0.0974929	1.02	0.0000000	0.00	0.0074474	3.30	0.0000000	0.00	27.9661	3.30	0.0182214	1.02	0.0000000	0.00	0.305542	0.23	0.0020080	13.24	0.0000000	0.00	25.3962	0.17	0.0188939	3.55	273.558	0.11	28.80916	1.02	0.0000000	0.00	0.0970897	2.67	
13D05130	2.0 %	0.0574649	1.72	0.0000000	0.00	0.0166393	1.45	0.0000000	0.00	62.4833	1.45	0.0107402	1.72	0.0000000	0.00	0.704874	0.19	0.0044863	12.90	0.0000000	0.00	58.5881	0.10	0.0422137	1.96	591.383	0.05	16.98088	1.72	0.0000000	0.00	0.2239823	2.66	
13D05131	2.2 %	0.0229683	3.13	0.0000000	0.00	0.0081602	2.95	0.0000000	0.00	30.6429	2.95	0.0042928	3.13	0.0000000	0.00	0.351357	0.22	0.0022002	13.15	0.0000000	0.00	29.2043	0.15	0.0207024	3.23	288.973	0.08	6.78714	3.13	0.0000000	0.00	0.1116480	2.66	
13D05132	2.4 %	0.0215665	3.35	0.0000000	0.00	0.0108527	2.18	0.0000000	0.00	40.7536	2.18	0.0040308	3.35	0.0000000	0.00	0.468229	0.20	0.0029261	13.00	0.0000000	0.00	38.9186	0.13	0.0275332	2.55	382.943	0.06	6.37290	3.35	0.0000000	0.00	0.1487857	2.66	
13D05134	2.7 %	0.0291180	2.99	0.0000000	0.00	0.0263113	1.02	0.0000000	0.00	98.8031	1.01	0.0054422	2.99	0.0000000	0.00	1.057358	0.18	0.0070941	12.86	0.0000000	0.00	87.8861	0.08	0.0667514	1.66	858.637	0.03	8.60437	2.99	0.0000000	0.00	0.3359885	2.66	
13D05135	3.0 %	0.0228543	3.85	0.0000000	0.00	0.0260821	1.03	0.0000000	0.00	97.9424	1.02	0.0042715	3.85	0.0000000	0.00	0.983742	0.18	0.0070323	12.86	0.0000000	0.00	81.7672	0.08	0.0661699	1.67	797.769	0.03	6.75346	3.85	0.0000000	0.00	0.3125962	2.66	
13D05136	3.3 %	0.0085987	7.79	0.0000000	0.00	0.0093133	2.50	0.0000000	0.00	34.9730	2.50	0.0016071	7.79	0.0000000	0.00	0.340468	0.23	0.0025111	13.06	0.0000000	0.00	28.2992	0.17	0.0236277	2.83	276.152	0.08	2.54093	7.79	0.0000000	0.00	0.1081879	2.67	
13D05138	3.6 %	0.0170025	4.86	0.0000000	0.00	0.0340656	0.83	0.0000000	0.00	127.9219	0.82	0.0031778	4.86	0.0000000	0.00	1.156870	0.18	0.0091848	12.85	0.0000000	0.00	96.1574	0.08	0.0864240	1.55	937.482	0.03	5.02424	4.86	0.0000000	0.00	0.3676097	2.66	
13D05139	3.9 %	0.0150106	5.64	0.0000000	0.00	0.0343487	0.84	0.0000000	0.00	128.9851	0.83	0.0028055	5.64	0.0000000	0.00	1.094045	0.18	0.0092611	12.85	0.0000000	0.00	90.9355	0.08	0.0871423	1.56	884.464	0.03	4.43562	5.64	0.0000000	0.00	0.3476465	2.66	
13D05140	4.2 %	0.0166922	5.79	0.0000000	0.00	0.0506054	0.69	0.0000000	0.00	190.0315	0.68	0.0031198	5.79	0.0000000	0.00	1.517246	0.18	0.0136443	12.84	0.0000000	0.00	126.1114	0.07	0.1283853	1.48	1224.411	0.02	4.93254	5.79	0.0000000	0.00	0.4821238	2.66	
13D05142	4.5 %	0.0118493	7.34	0.0000000	0.00	0.0387833	0.78	0.0000000	0.00	145.6376	0.77	0.0022146	7.34	0.0000000	0.00	1.122820	0.18	0.0104568	12.84	0.0000000	0.00	93.3273	0.08	0.0983928	1.53	904.506	0.03	3.50146	7.34	0.0000000	0.00	0.3567901	2.66	
13D05143	4.9 %	0.0075064	10.29	0.0000000	0.00	0.0253298	1.08	0.0000000	0.00	95.1175	1.07	0.0014029	10.29	0.0000000	0.00	0.714680	0.19	0.0068294	12.86	0.0000000	0.00	59.4032	0.10	0.0642614	1.70	574.223	0.04	2.21814	10.29	0.0000000	0.00	0.2270985	2.66	
13D05144	5.3 %	0.0123540	6.41	0.0000000	0.00	0.0318380	0.88	0.0000000	0.00	119.5569	0.86	0.0023090	6.41	0.0000000	0.00	0.879568	0.18	0.0085842	12.85	0.0000000	0.00	73.1085	0.09	0.0807726	1.58	705.994	0.04	3.65060	6.41	0.0000000	0.00	0.2794938	2.66	
13D05146	5.7 %	0.0320284	4.10	0.0000000	0.00	0.1054887	0.54	0.0000000	0.00	396.1273	0.52	0.0059861	4.10	0.0000000	0.00	2.842273	0.17	0.0284419	12.83	0.0000000	0.00	236.2458	0.07	0.2676236	1.42	2267.435	0.02	9.46439	4.10	0.0000000	0.00	0.9031676	2.66	
13D05147	6.1 %	0.0193452	5.05	0.0000000	0.00	0.0617428	0.64	0.0000036	277.50	231.8543	0.62	0.0036156	5.05	0.0000000	0.00	1.647453	0.18	0.0166471	12.83	0.0143394	277.50	136.9340	0.07	0.1566408	1.46	1309.866	0.02	5.71650	5.05	0.0000000	0.00	0.5234988	2.66	
13D05148	6.5 %	0.0120142	6.92	0.0000000	0.00	0.0281999	0.98	0.0000000	0.00	105.8953	0.97	0.0022455	6.92	0.0000000	0.00	0.763035	0.19	0.0076033	12.86	0.0000000	0.00	63.4224	0.10	0.0715429	1.64	600.934	0.04	3.55019	6.92	0.0000000	0.00	0.2424639	2.66	
13D05150	6.9 %	0.0123503	6.75	0.0000000	0.00	0.0313856	0.89	0.0000034	292.91	117.8581	0.87	0.0023083	6.75	0.0000000	0.00	0.867414	0.18	0.0084622	12.85	0.0137925	292.91	72.0982	0.09	0.0796250	1.58	682.613	0.04	3.64950	6.75	0.0000000	0.00	0.2756315	2.66	
13D05151	7.3 %	0.0135547	5.43	0.0000000	0.00	0.0273758	0.98	0.0000039	243.30	102.8005	0.97	0.0025334	5.43	0.0000000	0.00	0.713028	0.19	0.0073811	12.86	0.0155337	243.30	59.2659	0.10	0.0694520	1.64	550.114	0.04	4.00540	5.43	0.0000000	0.00	0.2265735	2.66	
13D05152	7.8 %	0.0103442	6.56	0.0000000	0.00	0.0166753	1.48	0.0000139	67.50	62.6185	1.47	0.0019333	6.56	0.0000000	0.00	0.431352	0.21	0.0044960	12.90	0.0557830	67.51	35.8534	0.13	0.0423051	1.98	331.562	0.07	3.05670	6.56	0.0000000	0.00	0.1370676	2.66	
13D05154	8.4 %	0.0173882	4.40	0.0000000	0.00	0.0264417	1.02	0.0000147	65.01	99.2929	1.01	0.0032499	4.40	0.0000000	0.00	0.557663	0.19	0.0071292	12.86	0.0591567	65.02	46.3521	0.11	0.0670823	1.66	412.338	0.06	5.13822	4.40	0.0000000	0.00	0.1772043	2.66	
13D05155	9.2 %	0.0201676	4.58	0.0000000	0.00	0.0380208	0.82	0.0000149	67.81	142.7744	0.80	0.0037693	4.58	0.0000000	0.00	0.529017	0.20	0.0102512	12.85	0.0598668	67.82	43.9712	0.11	0.0964584	1.54	366.904	0.08	5.95954	4.58	0.0000000	0.00	0.1681019	2.66	
13D05156	10.2 %	0.0347978	2.92	0.0000000	0.00	0.0655209	0.62	0.0000274	35.64	246.0418	0.60	0.0065037	2.92	0.0000000	0.00	0.538616	0.20	0.0176658	12.83	0.1102388	35.65	44.7690	0.11	0.1662259	1.45	356.424	0.09	10.28274	2.92	0.0000000	0.00	0.1711520	2.66	
13D05158	11.7 %	0.0269303	3.91	0.0000000	0.00	0.0644694	0.63	0.0000293	31.98	242.0930	0.61	0.0050333	3.91	0.0000000	0.00	0.342051	0.23	0.0173823	12.83	0.1179983	32.00	28.4308	0.16	0.1635580	1.45	218.168	0.15	7.95791	3.91	0.0000000	0.00	0.1086910	2.66	
13D05159	13.7 %	0.0357494	3.67	0.0000000	0.00	0.1091603	0.54	0.0000222	43.20	409.9147	0.52	0.0066816	3.67	0.0000000	0.00	0.329443	0.23	0.0294319	12.83	0.0895206	43.21	27.3828	0.16	0.2769384	1.42	212.487	0.19	10.56394	3.67	0.0000000	0.00	0.1046846	2.67	
13D05160	16.2 %	0.0249720	4.67	0.0000000	0.00	0.0915977	0.56	0.0000137	72.36	343.9642	0.54	0.0046673	4.67	0.0000000	0.00	0.325186	0.23	0.0246966	12.83	0.0552698	72.37	27.0290	0.17	0.2323822	1.42	224.543	0.16	7.37922	4.67	0.0000000	0.00	0.1033318	2.67	
13D05162	19.0 %	0.0174405	5.53	0.0000000	0.00	0.0564655	0.65	0.0000027	351.00	212.0373	0.63	0.0032596	5.53	0.0000000	0.00	0.158941	0.35	0.0152243	12.84	0.0109412	351.00	13.2109	0.31	0.1432524	1.46	111.911	0.26	5.15367	5.53	0.0000000	0.00	0.0505054	2.68	
		Σ	0.6175612	0.76	0.0000000	0.00	1.0423215	0.17	0.0001497	21.47	3914.0874	0.16	0.1154222	0.76	0.0000000	0.00	20.742270	0.04	0.2810315	3.06	0.6024408	21.47	1724.0687	0.02	2.6443575	0.35	16345.792	0.01	182.48935	0.76	0.0000000	0.00	6.5911146	0.64
		Σ					1.6600324	0.30		3914.0874	0.16							21.741165	0.60					1726.7130	0.02					16534.873	0.01			

Additional Parameters		40Ar/39Ar	1σ	37Ar/39Ar	1σ	36Ar/39Ar	1σ	Time (days)	37Ar (decay)	39Ar (decay)	40Ar (moles)
13D05128	1.8 %	11.900958	0.020312	1.100375	0.036310	0.004129	0.000038	152.722	20.471294	1.00107907	1.452E-11
13D05130	2.0 %	10.380092	0.010144	1.065717	0.015451	0.001264	0.000016	152.739	20.478315	1.00107919	2.921E-11
13D05131	2.2 %	10.123938	0.015883	1.048517	0.030936	0.001065	0.000023	152.748	20.481967	1.00107925	1.420E-11
13D05132	2.4 %	10.000102	0.012726	1.046411	0.022810	0.000832	0.000018	152.756	20.485338	1.00107931	1.869E-11
13D05134	2.7 %	9.864117	0.008180	1.123365	0.011372	0.000630	0.000009	152.774	20.492364	1.00107943	4.164E-11
13D05135	3.0 %	9.835037	0.008133	1.196851	0.012239	0.000598	0.000010	152.782	20.495738	1.00107949	3.863E-11
13D05136	3.3 %	9.843692	0.016452	1.234797	0.030918	0.000632	0.000022	152.791	20.499393	1.00107956	1.338E-11
13D05138	3.6 %	9.796720	0.007584	1.329144	0.010934	0.000531	0.000008	152.808	20.506424	1.00107968	4.526E-11
13D05139	3.9 %	9.769511	0.007775	1.417066	0.011755	0.000542	0.000009	152.817	20.509799	1.00107974	4.268E-11
13D05140	4.2 %	9.741985	0.007150	1.505323	0.010235	0.000533	0.000007	152.825	20.513175	1.00107980	5.903E-11
13D05142	4.5 %	9.722855	0.007844	1.558861	0.012051	0.000542	0.000009	152.842	20.520211	1.00107992	4.360E-11
13D05143	4.9 %	9.697198	0.009447	1.599487	0.017228	0.000552	0.000012	152.851	20.523870	1.00107998	2.768E-11
13D05144	5.3 %	9.699832	0.008507	1.633530	0.014189	0.000604	0.000010	152.860	20.527249	1.00108004	3.408E-11
13D05146	5.7 %	9.630754	0.006418	1.674862	0.008797	0.000581	0.000005	152.877	20.534289	1.00108017	1.093E-10
13D05147	6.1 %	9.600261	0.006835	1.691248	0.010514	0.000592	0.000007	152.885	20.537669	1.00108022	6.317E-11
13D05148	6.5 %	9.524167	0.009187	1.667801	0.016253	0.000633	0.000012	152.894	20.541332	1.00108029	2.903E-11
13D05150	6.9 %	9.511754	0.008470	1.632885	0.014331	0.000606	0.000011	152.912	20.548377	1.00108041	3.295E-11
13D05151	7.3 %	9.342600	0.009190	1.732534	0.016947	0.000690	0.000012	152.920	20.551760	1.00108047	2.661E-11
13D05152	7.8 %	9.325789	0.012456	1.744457	0.025762	0.000753	0.000018	152.929	20.555425	1.00108053	1.607E-11
13D05154	8.4 %	8.997418	0.010155	2.139047	0.021763	0.000945	0.000015	152.946	20.562193	1.00108065	2.005E-11
13D05155	9.2 %	8.464976	0.009794	3.239891	0.026244	0.001321	0.000020	152.955	20.565860	1.00108072	1.791E-11
13D05156	10.2 %	8.164587	0.009464	5.475474	0.033377	0.002233	0.000021	152.963	20.569245	1.00108077	1.761E-11
13D05158	11.7 %	7.911851	0.013025	8.466460	0.053465	0.003197	0.000034	152.981	20.576300	1.00108090	1.086E-11
13D05159	13.7 %	8.067868	0.013391	14.819888	0.080477	0.005240	0.000043	152.989	20.579687	1.00108096	1.071E-11
13D05160	16.2 %	8.511148	0.014392	12.617280	0.070903	0.004277	0.000039	152.998	20.583357	1.00108102	1.114E-11
13D05162	19.0 %	8.769882	0.027182	15.877955	0.111622	0.005534	0.000069	153.015	20.590417	1.00108114	5.622E-12

Procedure Blanks		36Ar ± 1σ (SE) [fA]	37Ar ± 1σ (SE) [fA]	38Ar ± 1σ (SE) [fA]	39Ar ± 1σ (SE) [fA]	40Ar ± 1σ (SE) [fA]
13D05128	1.8 %	0.0144547 ± 0.0003906	0.0189829 ± 0.0295990	0.0019070 ± 0.0267726	0.0299266 ± 0.0310711	4.0384230 ± 0.0620956
13D05130	2.0 %	0.0144108 ± 0.0003906	0.0134390 ± 0.0295990	0.0004239 ± 0.0267726	0.0600189 ± 0.0310711	4.1280339 ± 0.0620956
13D05131	2.2 %	0.0143971 ± 0.0003906	0.0127607 ± 0.0295990	0.0015946 ± 0.0267726	0.0709237 ± 0.0310711	4.1552100 ± 0.0620956
13D05132	2.4 %	0.0143884 ± 0.0003906	0.0131347 ± 0.0295990	0.0039598 ± 0.0267726	0.0785115 ± 0.0310711	4.1707258 ± 0.0620956
13D05134	2.7 %	0.0143780 ± 0.0003906	0.0160704 ± 0.0295990	0.0097392 ± 0.0267726	0.0878362 ± 0.0310711	4.1797809 ± 0.0620956
13D05135	3.0 %	0.0143750 ± 0.0003906	0.0181247 ± 0.0295990	0.0126302 ± 0.0267726	0.0897126 ± 0.0310711	4.1756506 ± 0.0620956
13D05136	3.3 %	0.0143719 ± 0.0003906	0.0205653 ± 0.0295990	0.0156563 ± 0.0267726	0.0902016 ± 0.0310711	4.1668021 ± 0.0620956
13D05138	3.6 %	0.0143641 ± 0.0003906	0.0252569 ± 0.0295990	0.0207004 ± 0.0267726	0.0875933 ± 0.0310711	4.1417131 ± 0.0620956
13D05139	3.9 %	0.0143584 ± 0.0003906	0.0272600 ± 0.0295990	0.0225778 ± 0.0267726	0.0851006 ± 0.0310711	4.1278537 ± 0.0620956
13D05140	4.2 %	0.0143510 ± 0.0003906	0.0289738 ± 0.0295990	0.0240102 ± 0.0267726	0.0820480 ± 0.0310711	4.1139027 ± 0.0620956
13D05142	4.5 %	0.0143290 ± 0.0003906	0.0313181 ± 0.0295990	0.0253569 ± 0.0267726	0.0745962 ± 0.0310711	4.0874338 ± 0.0620956
13D05143	4.9 %	0.0143138 ± 0.0003906	0.0317727 ± 0.0295990	0.0251098 ± 0.0267726	0.0704866 ± 0.0310711	4.0763568 ± 0.0620956
13D05144	5.3 %	0.0142976 ± 0.0003906	0.0316929 ± 0.0295990	0.0242865 ± 0.0267726	0.0667401 ± 0.0310711	4.0683866 ± 0.0620956
13D05146	5.7 %	0.0142578 ± 0.0003906	0.0299968 ± 0.0295990	0.0207663 ± 0.0267726	0.0595813 ± 0.0310711	4.0600346 ± 0.0620956
13D05147	6.1 %	0.0142363 ± 0.0003906	0.0284988 ± 0.0295990	0.0182600 ± 0.0267726	0.0566594 ± 0.0310711	4.0603568 ± 0.0620956
13D05148	6.5 %	0.0142120 ± 0.0003906	0.0264473 ± 0.0295990	0.0150108 ± 0.0267726	0.0539988 ± 0.0310711	4.0639722 ± 0.0620956
13D05150	6.9 %	0.0141646 ± 0.0003906	0.0215800 ± 0.0295990	0.0074815 ± 0.0267726	0.0506480 ± 0.0310711	4.0801143 ± 0.0620956
13D05151	7.3 %	0.0141431 ± 0.0003906	0.0190144 ± 0.0295990	0.0034360 ± 0.0267726	0.0499679 ± 0.0310711	4.0917437 ± 0.0620956
13D05152	7.8 %	0.0141218 ± 0.0003906	0.0162494 ± 0.0295990	0.0011130 ± 0.0267726	0.0499615 ± 0.0310711	4.1066968 ± 0.0620956
13D05154	8.4 %	0.0140921 ± 0.0003906	0.0117817 ± 0.0295990	0.0094813 ± 0.0267726	0.0520053 ± 0.0310711	4.1388574 ± 0.0620956
13D05155	9.2 %	0.0140837 ± 0.0003906	0.0100876 ± 0.0295990	0.0136906 ± 0.0267726	0.0542235 ± 0.0310711	4.1574393 ± 0.0620956
13D05156	10.2 %	0.0140823 ± 0.0003906	0.0092404 ± 0.0295990	0.0171625 ± 0.0267726	0.0569408 ± 0.0310711	4.1743551 ± 0.0620956
13D05158	11.7 %	0.0141052 ± 0.0003906	0.0106311 ± 0.0295990	0.0223638 ± 0.0267726	0.0645128 ± 0.0310711	4.2052289 ± 0.0620956
13D05159	13.7 %	0.0141315 ± 0.0003906	0.0133043 ± 0.0295990	0.0234938 ± 0.0267726	0.0689599 ± 0.0310711	4.2159993 ± 0.0620956
13D05160	16.2 %	0.0141736 ± 0.0003906	0.0180693 ± 0.0295990	0.0233986 ± 0.0267726	0.0742702 ± 0.0310711	4.2230645 ± 0.0620956
13D05162	19.0 %	0.0143023 ± 0.0003906	0.0339891 ± 0.0295990	0.0183329 ± 0.0267726	0.0855386 ± 0.0310711	4.2177685 ± 0.0620956

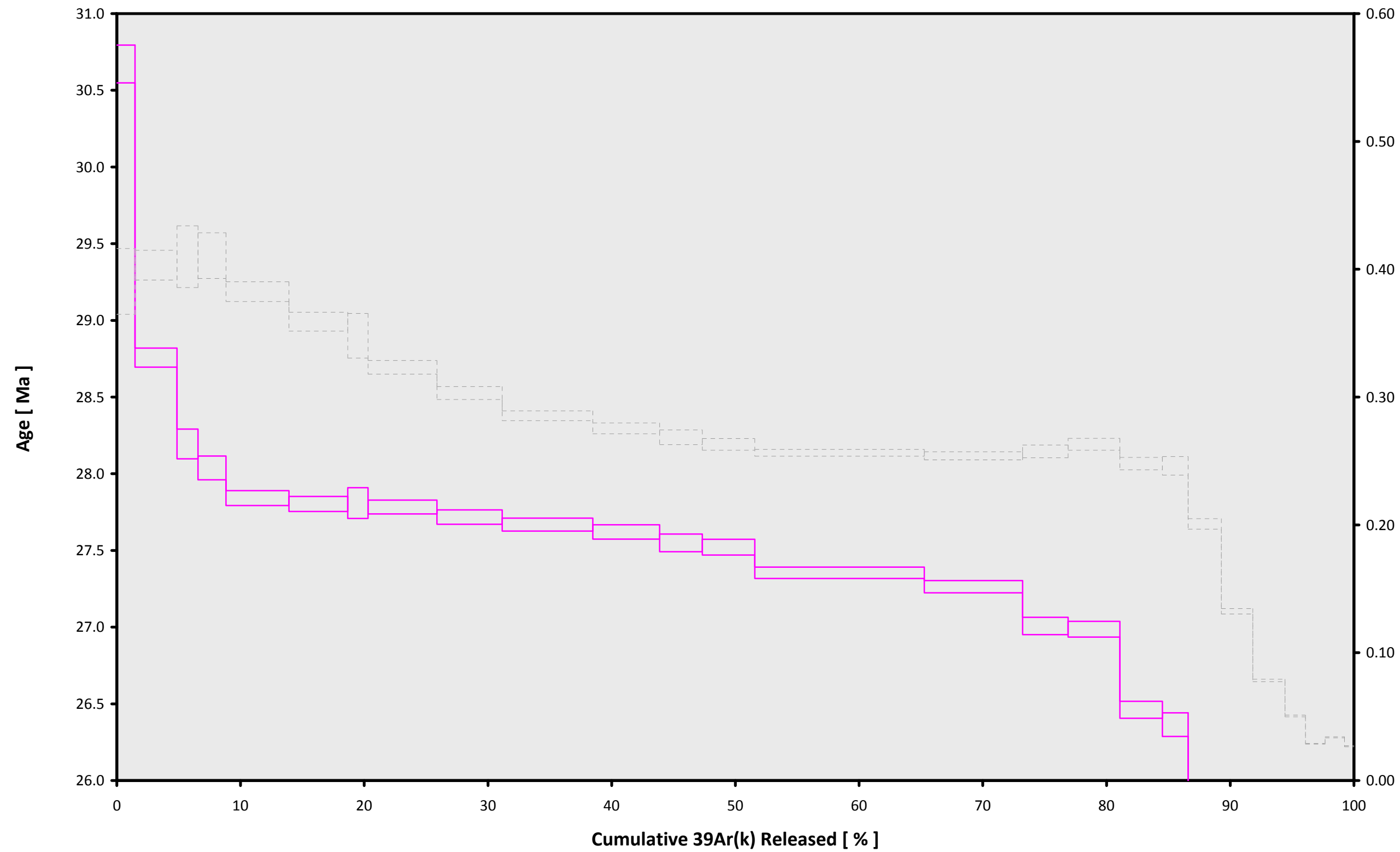
Intercept Values		36Ar ± 1σ (SE) [fA]	r2	Regression (type,n)	37Ar ± 1σ (SE) [fA]	r2	Regression (type,n)	38Ar ± 1σ (SE) [fA]	r2	Regression (type,n)	39Ar ± 1σ (SE) [fA]	r2	Regression (type,n)	40Ar ± 1σ (SE) [fA]	r2	Regression (type,n)
13D05128	1.8 %	0.1159471 ± 0.0008025	0.0394	EXP 150 of 150	1.360506 ± 0.032224	0.0740	EXP 150 of 150	0.3068126 ± 0.0272860	0.0084	EXP 150 of 150	25.265359 ± 0.024436	0.9794	EXP 150 of 150	307.13765 ± 0.04898	0.9993	EXP 150 of 150
13D05130	2.0 %	0.0860803 ± 0.0008199	0.2684	EXP 150 of 150	3.009711 ± 0.028335	0.3259	EXP 150 of 150	0.6293418 ± 0.0239962	0.0019	EXP 150 of 150	58.275882 ± 0.029571	0.9943	EXP 150 of 150	613.99447 ± 0.06264	0.9997	EXP 150 of 150
13D05131	2.2 %	0.0445029 ± 0.0005211	0.4026	EXP 150 of 150	1.481922 ± 0.030816	0.0431	EXP 150 of 150	0.3488035 ± 0.0286292	0.0102	EXP 150 of 150	29.089333 ± 0.026900	0.9813	EXP 149 of 150	300.64881 ± 0.04245	0.9994	EXP 150 of 150
13D05132	2.4 %	0.0457424 ± 0.0005264	0.5815	EXP 150 of 150	1.966729 ± 0.029094	0.0703	EXP 150 of 150	0.4032452 ± 0.0262775	0.0001	EXP 150 of 150	38.749303 ± 0.028516	0.9879	EXP 150 of 150	394.45381 ± 0.04532	0.9996	EXP 150 of 150
13D05134	2.7 %	0.0679861 ± 0.0006872	0.5634	EXP 150 of 150	4.750742 ± 0.030120	0.4283	EXP 149 of 150	1.0384097 ± 0.0266596	0.0609	EXP 150 of 150	87.418922 ± 0.034535	0.9966	EXP 150 of 150	873.57922 ± 0.07943	0.9998	EXP 150 of 150
13D05135	3.0 %	0.0617035 ± 0.0007006	0.5218	EXP 150 of 150	4.710775 ± 0.030359	0.4129	EXP 150 of 150	0.9483891 ± 0.0258193	0.0376	EXP 150 of 150	81.344615 ± 0.029691	0.9970	EXP 150 of 150	810.70077 ± 0.06706	0.9998	EXP 150 of 150
13D05136	3.3 %	0.0316955 ± 0.0004628	0.5674	EXP 150 of 150	1.695904 ± 0.028522	0.0750	EXP 150 of 150	0.2879420 ± 0.0269212	0.0003	EXP 150 of 150	28.212826 ± 0.029610	0.9754	EXP 150 of 150	283.55381 ± 0.04278	0.9993	EXP 150 of 150
13D05138	3.6 %	0.0637543 ± 0.0006277	0.6343	EXP 150 of 150	6.151103 ± 0.028381	0.6426	EXP 150 of 150	1.1423869 ± 0.0235661	0.0628	EXP 150 of 150	95.651020 ± 0.029033	0.9980	EXP 150 of 150	948.99593 ± 0.07143	0.9999	EXP 150 of 150
13D05139	3.9 %	0.0620960 ± 0.0006521	0.6243	EXP 150 of 150	6.203004 ± 0.029586	0.6115	EXP 149 of 150	1.0221964 ± 0.0255892	0.0101	EXP 150 of 150	90.464271 ± 0.030308	0.9975	EXP 150 of 150	895.24256 ± 0.07252	0.9998	EXP 150 of 150
13D05140	4.2 %	0.0794375 ± 0.0007612	0.6659	EXP 150 of 150	9.126095 ± 0.032597	0.7501	EXP 150 of 150	1.5200393 ± 0.0254693	0.1605	EXP 150 of 150	125.429335 ± 0.035360	0.9982	EXP 150 of 150	1236.52290 ± 0.07729	0.9999	EXP 150 of 150
13D05142	4.5 %	0.0632980 ± 0.0006736	0.5935	EXP 150 of 150	7.000838 ± 0.030228	0.5685	EXP 150 of 150	1.1030760 ± 0.0257803	0.0533	EXP 150 of 150	92.839747 ± 0.034143	0.9970	EXP 150 of 150	914.35937 ± 0.07827	0.9998	EXP 150 of 150
13D05143	4.9 %	0.0460712 ± 0.0005732	0.6004	EXP 150 of 150	4.582830 ± 0.032343	0.3372	EXP 150 of 150	0.7335885 ± 0.0245605	0.0789	EXP 149 of 150	59.117551 ± 0.030073	0.9943	EXP 150 of 150	581.95561 ± 0.05767	0.9997	EXP 150 of 150
13D05144	5.3 %	0.0570376 ± 0.0005916	0.5182	EXP 150 of 150	5.751153 ± 0.028954	0.5580	EXP 150 of 150	0.8906037 ± 0.0276307	0.0621	EXP 150 of 150	72.738578 ± 0.030707	0.9960	EXP 150 of 150	715.48324 ± 0.06735	0.9998	EXP 150 of 150
13D05146	5.7 %	0.1472566 ± 0.0010183	0.6579	EXP 150 of 150	18.973758 ± 0.029474	0.9249	EXP 150 of 150	2.8297408 ± 0.0260507	0.2857	EXP 150 of 150	234.900831 ± 0.042353	0.9993	EXP 150 of 150	2286.64676 ± 0.10294	1.0000	EXP 150 of 150
13D05147	6.1 %	0.0926635 ± 0.0007455	0.5957	EXP 150 of 150	11.114508 ± 0.032748	0.7925	EXP 150 of 150	1.6801040 ± 0.0284895	0.1067	EXP 150 of 150	136.178105 ± 0.032752	0.9987	EXP 150 of 150	1322.93113 ± 0.07790	0.9999	EXP 150 of 150
13D05148	6.5 %	0.0531048 ± 0.0006417	0.5533	EXP 150 of 150	5.088879 ± 0.031034	0.4521	EXP 148 of 150	0.7362965 ± 0.0295139	0.0101	EXP 150 of 150	63.099054 ± 0.033104	0.9939	EXP 150 of 150	610.06130 ± 0.06076	0.9997	EXP 150 of 150
13D05150	6.9 %	0.0564669 ± 0.0006432	0.5403	EXP 150 of 150	5.653977 ± 0.028906	0.5800	EXP 150 of 150	0.8887401 ± 0.0295188	0.0381	EXP 150 of 150	71.718175 ± 0.031829	0.9956	EXP 150 of 150	692.06001 ± 0.06278	0.9998	EXP 150 of 150
13D05151	7.3 %	0.0537324 ± 0.0005258	0.6075	EXP 150 of 150	4.931004 ± 0.029525	0.3863	EXP 150 of 150	0.7330387 ± 0.0259575	0.0142	EXP 149 of 150	58.965803 ± 0.030879	0.9939	EXP 150 of 150	559.60256 ± 0.05837	0.9997	EXP 150 of 150
13D05152	7.8 %	0.0402669 ± 0.0004655	0.5416	EXP 150 of 150	3.007740 ± 0.029337	0.1394	EXP 150 of 150	0.4865211 ± 0.0257955	0.0482	EXP 150 of 150	35.691891 ± 0.027008	0.9871	EXP 150 of 150	339.56580 ± 0.05229	0.9993	EXP 150 of 150
13D05154	8.4 %	0.0564962 ± 0.0005603	0.4217	EXP 150 of 150	4.753765 ± 0.030368	0.4663	EXP 150 of 150	0.6101808 ± 0.0269042	0.0129	EXP 150 of 150	46.143029 ± 0.028760	0.9912	EXP 150 of 150	422.66934 ± 0.05425	0.9996	EXP 150 of 150
13D05155	9.2 %	0.0703747 ± 0.0007321	0.2037	EXP 150 of 150	6.827421 ± 0.032812	0.6094	EXP 150 of 150	0.5819696 ± 0.0298036	0.0114	EXP 150 of 150	43.810289 ± 0.027569	0.9911	EXP 150 of 150	377.97254 ± 0.05116	0.9995	EXP 150 of 150
13D05156	10.2 %	0.1111315 ± 0.0007741	0.0022	EXP 150 of 150	11.755558 ± 0.031527	0.8156	EXP 150 of 150	0.6477749 ± 0.0279579	0.0141	EXP 150 of 150	44.674478 ± 0.028892	0.9906	EXP 150 of 150	371.82276 ± 0.05141	0.9995	EXP 150 of 150
13D05158	11.7 %	0.1025302 ± 0.0008252	0.0013	EXP 150 of 150	11.564464 ± 0.033495	0.7964	EXP 150 of 150	0.4543037 ± 0.0258162	0.0253	EXP 150 of 150	28.456690 ± 0.028538	0.9780	EXP 150 of 150	230.91474 ± 0.04312	0.9989	EXP 150 of 150
13D05159	13.7 %	0.1543015 ± 0.0010014	0.2174	EXP 150 of 150	19.573172 ± 0.029293	0.9332	EXP 150 of 150	0.4261149 ± 0.0269717	0.0115	EXP 150 of 150	27.533157 ± 0.027060	0.9783	EXP 150 of 150	227.84012 ± 0.04246	0.9989	EXP 150 of 150
13D05160	16.2 %	0.1269265 ± 0.0008917	0.1395	EXP 150 of 150	16.428054 ± 0.029594	0.9090	EXP 149 of 150	0.3814963 ± 0.0288723	0.0077	EXP 150 of 150	27.142867 ± 0.027717	0.9760	EXP 150 of 150	236.73586 ± 0.04077	0.9991	EXP 150 of 150
13D05162	19.0 %	0.0857827 ± 0.0007470	0.0023	EXP 149 of 150	10.146481 ± 0.030877	0.7768	EXP 149 of 150	0.1677695 ± 0.0268066	0.0010	EXP 150 of 150	13.345304 ± 0.024189	0.9246	EXP 150 of 150	121.57845 ± 0.04016	0.9951	EXP 150 of 150

Project Info		Analyst	Irradiation	X-pos	Y-pos	Z/H-pos	Project	Experiment	Nmb
13D05128	1.8 %	Susan Schnur	13-OSU-05			57.70	Walvis Ridge\MV1203 (13-INT-04)	13D05127	01
13D05130	2.0 %	Susan Schnur	13-OSU-05			57.70	Walvis Ridge\MV1203 (13-INT-04)	13D05127	01
13D05131	2.2 %	Susan Schnur	13-OSU-05			57.70	Walvis Ridge\MV1203 (13-INT-04)	13D05127	01
13D05132	2.4 %	Susan Schnur	13-OSU-05			57.70	Walvis Ridge\MV1203 (13-INT-04)	13D05127	01
13D05134	2.7 %	Susan Schnur	13-OSU-05			57.70	Walvis Ridge\MV1203 (13-INT-04)	13D05127	01
13D05135	3.0 %	Susan Schnur	13-OSU-05			57.70	Walvis Ridge\MV1203 (13-INT-04)	13D05127	01
13D05136	3.3 %	Susan Schnur	13-OSU-05			57.70	Walvis Ridge\MV1203 (13-INT-04)	13D05127	01
13D05138	3.6 %	Susan Schnur	13-OSU-05			57.70	Walvis Ridge\MV1203 (13-INT-04)	13D05127	01
13D05139	3.9 %	Susan Schnur	13-OSU-05			57.70	Walvis Ridge\MV1203 (13-INT-04)	13D05127	01
13D05140	4.2 %	Susan Schnur	13-OSU-05			57.70	Walvis Ridge\MV1203 (13-INT-04)	13D05127	01
13D05142	4.5 %	Susan Schnur	13-OSU-05			57.70	Walvis Ridge\MV1203 (13-INT-04)	13D05127	01
13D05143	4.9 %	Susan Schnur	13-OSU-05			57.70	Walvis Ridge\MV1203 (13-INT-04)	13D05127	01
13D05144	5.3 %	Susan Schnur	13-OSU-05			57.70	Walvis Ridge\MV1203 (13-INT-04)	13D05127	01
13D05146	5.7 %	Susan Schnur	13-OSU-05			57.70	Walvis Ridge\MV1203 (13-INT-04)	13D05127	01
13D05147	6.1 %	Susan Schnur	13-OSU-05			57.70	Walvis Ridge\MV1203 (13-INT-04)	13D05127	01
13D05148	6.5 %	Susan Schnur	13-OSU-05			57.70	Walvis Ridge\MV1203 (13-INT-04)	13D05127	01
13D05150	6.9 %	Susan Schnur	13-OSU-05			57.70	Walvis Ridge\MV1203 (13-INT-04)	13D05127	01
13D05151	7.3 %	Susan Schnur	13-OSU-05			57.70	Walvis Ridge\MV1203 (13-INT-04)	13D05127	01
13D05152	7.8 %	Susan Schnur	13-OSU-05			57.70	Walvis Ridge\MV1203 (13-INT-04)	13D05127	01
13D05154	8.4 %	Susan Schnur	13-OSU-05			57.70	Walvis Ridge\MV1203 (13-INT-04)	13D05127	01
13D05155	9.2 %	Susan Schnur	13-OSU-05			57.70	Walvis Ridge\MV1203 (13-INT-04)	13D05127	01
13D05156	10.2 %	Susan Schnur	13-OSU-05			57.70	Walvis Ridge\MV1203 (13-INT-04)	13D05127	01
13D05158	11.7 %	Susan Schnur	13-OSU-05			57.70	Walvis Ridge\MV1203 (13-INT-04)	13D05127	01
13D05159	13.7 %	Susan Schnur	13-OSU-05			57.70	Walvis Ridge\MV1203 (13-INT-04)	13D05127	01
13D05160	16.2 %	Susan Schnur	13-OSU-05			57.70	Walvis Ridge\MV1203 (13-INT-04)	13D05127	01
13D05162	19.0 %	Susan Schnur	13-OSU-05			57.70	Walvis Ridge\MV1203 (13-INT-04)	13D05127	01

Sample Parameters	Sample	Material	Location	Standard Name	Standard (in Ma)	%1σ	Standard Reference	Standard 40Ar/39Ar	%1σ	J	%1σ	Air 40Ar/36Ar	%1σ	MDF (lin)	%1σ	Volume Ratio	Sensitivity (mol/volt)	Day	Month	Year	Hour	Min	Resist	
13D05128	1.8 %	MV1203-D37-03 2x Lch	Groundmass	Omura Guyot	FCT-NM	28.201	0.082	Kuiper et al (2008)	9.89712	0.117	0.00158808	0.117	302.768	0.094	0.99399095	0.063	1	4.8E-14	21	NOV	2013	14	55	1
13D05130	2.0 %	MV1203-D37-03 2x Lch	Groundmass	Omura Guyot	FCT-NM	28.201	0.082	Kuiper et al (2008)	9.89712	0.117	0.00158808	0.117	302.768	0.094	0.99399095	0.063	1	4.8E-14	21	NOV	2013	15	20	1
13D05131	2.2 %	MV1203-D37-03 2x Lch	Groundmass	Omura Guyot	FCT-NM	28.201	0.082	Kuiper et al (2008)	9.89712	0.117	0.00158808	0.117	302.768	0.094	0.99399095	0.063	1	4.8E-14	21	NOV	2013	15	33	1
13D05132	2.4 %	MV1203-D37-03 2x Lch	Groundmass	Omura Guyot	FCT-NM	28.201	0.082	Kuiper et al (2008)	9.89712	0.117	0.00158808	0.117	302.768	0.094	0.99399095	0.063	1	4.8E-14	21	NOV	2013	15	45	1
13D05134	2.7 %	MV1203-D37-03 2x Lch	Groundmass	Omura Guyot	FCT-NM	28.201	0.082	Kuiper et al (2008)	9.89712	0.117	0.00158808	0.117	302.768	0.094	0.99399095	0.063	1	4.8E-14	21	NOV	2013	16	10	1
13D05135	3.0 %	MV1203-D37-03 2x Lch	Groundmass	Omura Guyot	FCT-NM	28.201	0.082	Kuiper et al (2008)	9.89712	0.117	0.00158808	0.117	302.768	0.094	0.99399095	0.063	1	4.8E-14	21	NOV	2013	16	22	1
13D05136	3.3 %	MV1203-D37-03 2x Lch	Groundmass	Omura Guyot	FCT-NM	28.201	0.082	Kuiper et al (2008)	9.89712	0.117	0.00158808	0.117	302.768	0.094	0.99399095	0.063	1	4.8E-14	21	NOV	2013	16	35	1
13D05138	3.6 %	MV1203-D37-03 2x Lch	Groundmass	Omura Guyot	FCT-NM	28.201	0.082	Kuiper et al (2008)	9.89712	0.117	0.00158808	0.117	302.768	0.094	0.99399095	0.063	1	4.8E-14	21	NOV	2013	17	0	1
13D05139	3.9 %	MV1203-D37-03 2x Lch	Groundmass	Omura Guyot	FCT-NM	28.201	0.082	Kuiper et al (2008)	9.89712	0.117	0.00158808	0.117	302.768	0.094	0.99399095	0.063	1	4.8E-14	21	NOV	2013	17	12	1
13D05140	4.2 %	MV1203-D37-03 2x Lch	Groundmass	Omura Guyot	FCT-NM	28.201	0.082	Kuiper et al (2008)	9.89712	0.117	0.00158808	0.117	302.768	0.094	0.99399095	0.063	1	4.8E-14	21	NOV	2013	17	24	1
13D05142	4.5 %	MV1203-D37-03 2x Lch	Groundmass	Omura Guyot	FCT-NM	28.201	0.082	Kuiper et al (2008)	9.89712	0.117	0.00158808	0.117	302.768	0.094	0.99399095	0.063	1	4.8E-14	21	NOV	2013	17	49	1
13D05143	4.9 %	MV1203-D37-03 2x Lch	Groundmass	Omura Guyot	FCT-NM	28.201	0.082	Kuiper et al (2008)	9.89712	0.117	0.00158808	0.117	302.768	0.094	0.99399095	0.063	1	4.8E-14	21	NOV	2013	18	2	1
13D05144	5.3 %	MV1203-D37-03 2x Lch	Groundmass	Omura Guyot	FCT-NM	28.201	0.082	Kuiper et al (2008)	9.89712	0.117	0.00158808	0.117	302.768	0.094	0.99399095	0.063	1	4.8E-14	21	NOV	2013	18	14	1
13D05146	5.7 %	MV1203-D37-03 2x Lch	Groundmass	Omura Guyot	FCT-NM	28.201	0.082	Kuiper et al (2008)	9.89712	0.117	0.00158808	0.117	302.768	0.094	0.99399095	0.063	1	4.8E-14	21	NOV	2013	18	39	1
13D05147	6.1 %	MV1203-D37-03 2x Lch	Groundmass	Omura Guyot	FCT-NM	28.201	0.082	Kuiper et al (2008)	9.89712	0.117	0.00158808	0.117	302.768	0.094	0.99399095	0.063	1	4.8E-14	21	NOV	2013	18	51	1
13D05148	6.5 %	MV1203-D37-03 2x Lch	Groundmass	Omura Guyot	FCT-NM	28.201	0.082	Kuiper et al (2008)	9.89712	0.117	0.00158808	0.117	302.768	0.094	0.99399095	0.063	1	4.8E-14	21	NOV	2013	19	4	1
13D05150	6.9 %	MV1203-D37-03 2x Lch	Groundmass	Omura Guyot	FCT-NM	28.201	0.082	Kuiper et al (2008)	9.89712	0.117	0.00158808	0.117	302.768	0.094	0.99399095	0.063	1	4.8E-14	21	NOV	2013	19	29	1
13D05151	7.3 %	MV1203-D37-03 2x Lch	Groundmass	Omura Guyot	FCT-NM	28.201	0.082	Kuiper et al (2008)	9.89712	0.117	0.00158808	0.117	302.768	0.094	0.99399095	0.063	1	4.8E-14	21	NOV	2013	19	41	1
13D05152	7.8 %	MV1203-D37-03 2x Lch	Groundmass	Omura Guyot	FCT-NM	28.201	0.082	Kuiper et al (2008)	9.89712	0.117	0.00158808	0.117	302.768	0.094	0.99399095	0.063	1	4.8E-14	21	NOV	2013	19	54	1
13D05154	8.4 %	MV1203-D37-03 2x Lch	Groundmass	Omura Guyot	FCT-NM	28.201	0.082	Kuiper et al (2008)	9.89712	0.117	0.00158808	0.117	302.768	0.094	0.99399095	0.063	1	4.8E-14	21	NOV	2013	20	18	1
13D05155	9.2 %	MV1203-D37-03 2x Lch	Groundmass	Omura Guyot	FCT-NM	28.201	0.082	Kuiper et al (2008)	9.89712	0.117	0.00158808	0.117	302.768	0.094	0.99399095	0.063	1	4.8E-14	21	NOV	2013	20	31	1
13D05156	10.2 %	MV1203-D37-03 2x Lch	Groundmass	Omura Guyot	FCT-NM	28.201	0.082	Kuiper et al (2008)	9.89712	0.117	0.00158808	0.117	302.768	0.094	0.99399095	0.063	1	4.8E-14	21	NOV	2013	20	43	1
13D05158	11.7 %	MV1203-D37-03 2x Lch	Groundmass	Omura Guyot	FCT-NM	28.201	0.082	Kuiper et al (2008)	9.89712	0.117	0.00158808	0.117	302.768	0.094	0.99399095	0.063	1	4.8E-14	21	NOV	2013	21	8	1
13D05159	13.7 %	MV1203-D37-03 2x Lch	Groundmass	Omura Guyot	FCT-NM	28.201	0.082	Kuiper et al (2008)	9.89712	0.117	0.00158808	0.117	302.768	0.094	0.99399095	0.063	1	4.8E-14	21	NOV	2013	21	20	1
13D05160	16.2 %	MV1203-D37-03 2x Lch	Groundmass	Omura Guyot	FCT-NM	28.201	0.082	Kuiper et al (2008)	9.89712	0.117	0.00158808	0.117	302.768	0.094	0.99399095	0.063	1	4.8E-14	21	NOV	2013	21	33	1
13D05162	19.0 %	MV1203-D37-03 2x Lch	Groundmass	Omura Guyot	FCT-NM	28.201	0.082	Kuiper et al (2008)	9.89712	0.117	0.00158808	0.117	302.768	0.094	0.99399095	0.063	1	4.8E-14	21	NOV	2013	21	58	1

<b>Irradiation Constants</b>		<b>40/36(a)</b>	<b>%1σ</b>	<b>40/36(c)</b>	<b>%1σ</b>	<b>38/36(a)</b>	<b>%1σ</b>	<b>38/36(c)</b>	<b>%1σ</b>	<b>39/37(ca)</b>	<b>%1σ</b>	<b>38/37(ca)</b>	<b>%1σ</b>	<b>36/37(ca)</b>	<b>%1σ</b>	<b>40/39(k)</b>	<b>%1σ</b>	<b>38/39(k)</b>	<b>%1σ</b>	<b>36/38(cl)</b>	<b>%1σ</b>	<b>K/Ca</b>	<b>%1σ</b>	<b>K/Cl</b>	<b>%1σ</b>	<b>Ca/Cl</b>	<b>%1σ</b>
13D05128	1.8 %	295.5	0	0.018	35	0.1869	0	1.493	3	0.0006756	1.32	0.0000718	12.82	0.0002663	0.15	0.003823	2.66	0.012031	0.16	0	0	0.43	0	0	0	0	0
13D05130	2.0 %	295.5	0	0.018	35	0.1869	0	1.493	3	0.0006756	1.32	0.0000718	12.82	0.0002663	0.15	0.003823	2.66	0.012031	0.16	0	0	0.43	0	0	0	0	0
13D05131	2.2 %	295.5	0	0.018	35	0.1869	0	1.493	3	0.0006756	1.32	0.0000718	12.82	0.0002663	0.15	0.003823	2.66	0.012031	0.16	0	0	0.43	0	0	0	0	0
13D05132	2.4 %	295.5	0	0.018	35	0.1869	0	1.493	3	0.0006756	1.32	0.0000718	12.82	0.0002663	0.15	0.003823	2.66	0.012031	0.16	0	0	0.43	0	0	0	0	0
13D05134	2.7 %	295.5	0	0.018	35	0.1869	0	1.493	3	0.0006756	1.32	0.0000718	12.82	0.0002663	0.15	0.003823	2.66	0.012031	0.16	0	0	0.43	0	0	0	0	0
13D05135	3.0 %	295.5	0	0.018	35	0.1869	0	1.493	3	0.0006756	1.32	0.0000718	12.82	0.0002663	0.15	0.003823	2.66	0.012031	0.16	0	0	0.43	0	0	0	0	0
13D05136	3.3 %	295.5	0	0.018	35	0.1869	0	1.493	3	0.0006756	1.32	0.0000718	12.82	0.0002663	0.15	0.003823	2.66	0.012031	0.16	0	0	0.43	0	0	0	0	0
13D05138	3.6 %	295.5	0	0.018	35	0.1869	0	1.493	3	0.0006756	1.32	0.0000718	12.82	0.0002663	0.15	0.003823	2.66	0.012031	0.16	0	0	0.43	0	0	0	0	0
13D05139	3.9 %	295.5	0	0.018	35	0.1869	0	1.493	3	0.0006756	1.32	0.0000718	12.82	0.0002663	0.15	0.003823	2.66	0.012031	0.16	0	0	0.43	0	0	0	0	0
13D05140	4.2 %	295.5	0	0.018	35	0.1869	0	1.493	3	0.0006756	1.32	0.0000718	12.82	0.0002663	0.15	0.003823	2.66	0.012031	0.16	0	0	0.43	0	0	0	0	0
13D05142	4.5 %	295.5	0	0.018	35	0.1869	0	1.493	3	0.0006756	1.32	0.0000718	12.82	0.0002663	0.15	0.003823	2.66	0.012031	0.16	0	0	0.43	0	0	0	0	0
13D05143	4.9 %	295.5	0	0.018	35	0.1869	0	1.493	3	0.0006756	1.32	0.0000718	12.82	0.0002663	0.15	0.003823	2.66	0.012031	0.16	0	0	0.43	0	0	0	0	0
13D05144	5.3 %	295.5	0	0.018	35	0.1869	0	1.493	3	0.0006756	1.32	0.0000718	12.82	0.0002663	0.15	0.003823	2.66	0.012031	0.16	0	0	0.43	0	0	0	0	0
13D05146	5.7 %	295.5	0	0.018	35	0.1869	0	1.493	3	0.0006756	1.32	0.0000718	12.82	0.0002663	0.15	0.003823	2.66	0.012031	0.16	0	0	0.43	0	0	0	0	0
13D05147	6.1 %	295.5	0	0.018	35	0.1869	0	1.493	3	0.0006756	1.32	0.0000718	12.82	0.0002663	0.15	0.003823	2.66	0.012031	0.16	0	0	0.43	0	0	0	0	0
13D05148	6.5 %	295.5	0	0.018	35	0.1869	0	1.493	3	0.0006756	1.32	0.0000718	12.82	0.0002663	0.15	0.003823	2.66	0.012031	0.16	0	0	0.43	0	0	0	0	0
13D05150	6.9 %	295.5	0	0.018	35	0.1869	0	1.493	3	0.0006756	1.32	0.0000718	12.82	0.0002663	0.15	0.003823	2.66	0.012031	0.16	0	0	0.43	0	0	0	0	0
13D05151	7.3 %	295.5	0	0.018	35	0.1869	0	1.493	3	0.0006756	1.32	0.0000718	12.82	0.0002663	0.15	0.003823	2.66	0.012031	0.16	0	0	0.43	0	0	0	0	0
13D05152	7.8 %	295.5	0	0.018	35	0.1869	0	1.493	3	0.0006756	1.32	0.0000718	12.82	0.0002663	0.15	0.003823	2.66	0.012031	0.16	0	0	0.43	0	0	0	0	0
13D05154	8.4 %	295.5	0	0.018	35	0.1869	0	1.493	3	0.0006756	1.32	0.0000718	12.82	0.0002663	0.15	0.003823	2.66	0.012031	0.16	0	0	0.43	0	0	0	0	0
13D05155	9.2 %	295.5	0	0.018	35	0.1869	0	1.493	3	0.0006756	1.32	0.0000718	12.82	0.0002663	0.15	0.003823	2.66	0.012031	0.16	0	0	0.43	0	0	0	0	0
13D05156	10.2 %	295.5	0	0.018	35	0.1869	0	1.493	3	0.0006756	1.32	0.0000718	12.82	0.0002663	0.15	0.003823	2.66	0.012031	0.16	0	0	0.43	0	0	0	0	0
13D05158	11.7 %	295.5	0	0.018	35	0.1869	0	1.493	3	0.0006756	1.32	0.0000718	12.82	0.0002663	0.15	0.003823	2.66	0.012031	0.16	0	0	0.43	0	0	0	0	0
13D05159	13.7 %	295.5	0	0.018	35	0.1869	0	1.493	3	0.0006756	1.32	0.0000718	12.82	0.0002663	0.15	0.003823	2.66	0.012031	0.16	0	0	0.43	0	0	0	0	0
13D05160	16.2 %	295.5	0	0.018	35	0.1869	0	1.493	3	0.0006756	1.32	0.0000718	12.82	0.0002663	0.15	0.003823	2.66	0.012031	0.16	0	0	0.43	0	0	0	0	0
13D05162	19.0 %	295.5	0	0.018	35	0.1869	0	1.493	3	0.0006756	1.32	0.0000718	12.82	0.0002663	0.15	0.003823	2.66	0.012031	0.16	0	0	0.43	0	0	0	0	0

**13D05127.AGE >>> MV1203-D37-03 2X LCH >>> WALVIS RIDGE | MV1203 (13-INT-04) PROJECT**



**Ar-Ages in Ma**

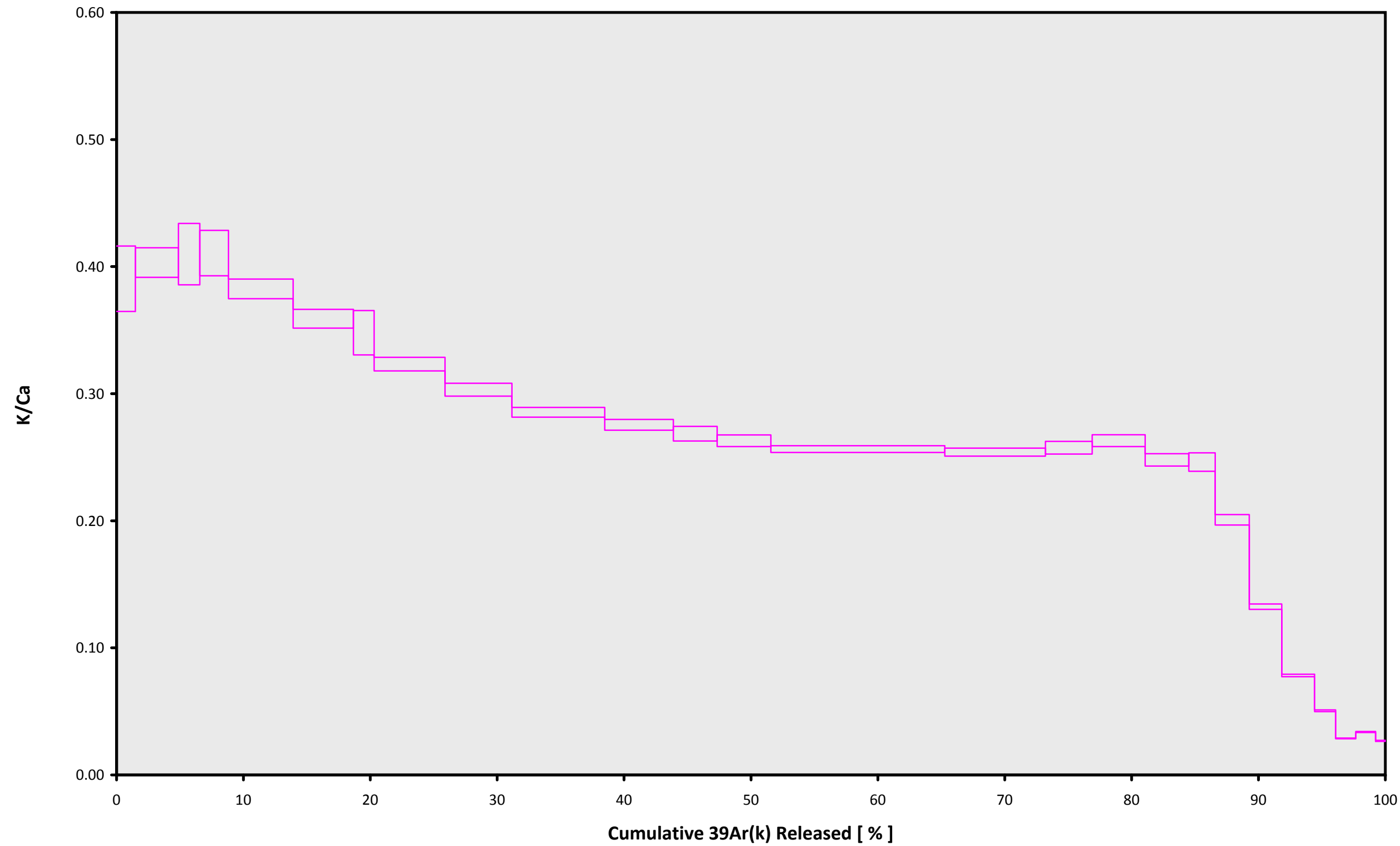
**TOTAL FUSION**  
**27.02 ± 0.06**

**Sample Info**

**Groundmass**  
**Omura Guyot**  
**Susan Schnur**

**IRR = 13-OSU-05**  
**J = 0.00158808 ± 0.00000186**

**13D05127.AGE >>> MV1203-D37-03 2X LCH >>> WALVIS RIDGE | MV1203 (13-INT-04) PROJECT**



**Ar-Ages in Ma**

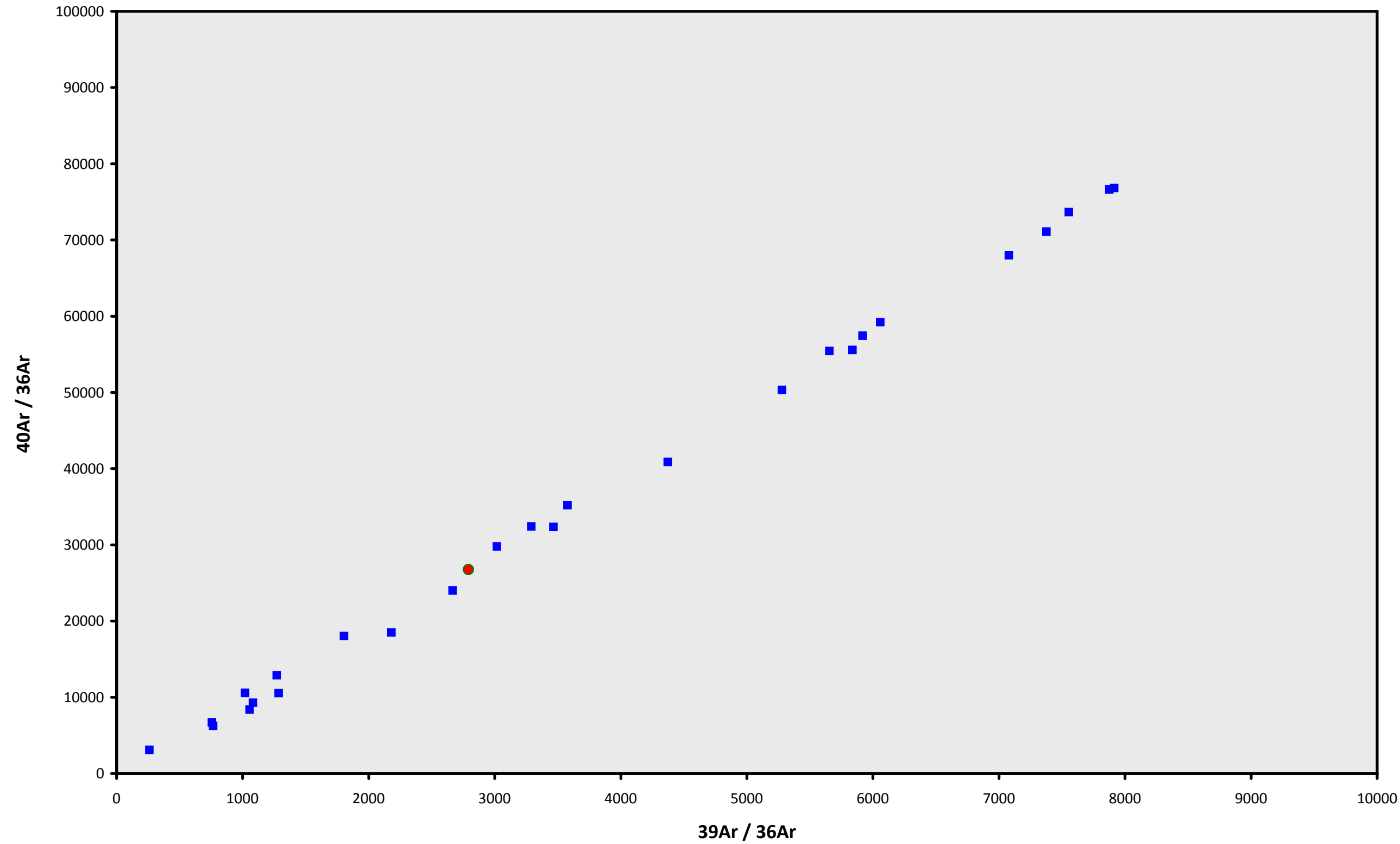
**TOTAL FUSION**  
**27.02 ± 0.06**

**Sample Info**

**Groundmass**  
**Omura Guyot**  
**Susan Schnur**

**IRR = 13-OSU-05**  
**J = 0.00158808 ± 0.00000186**

**13D05127.AGE >>> MV1203-D37-03 2X LCH >>> WALVIS RIDGE | MV1203 (13-INT-04) PROJECT**



**Ar-Ages in Ma**

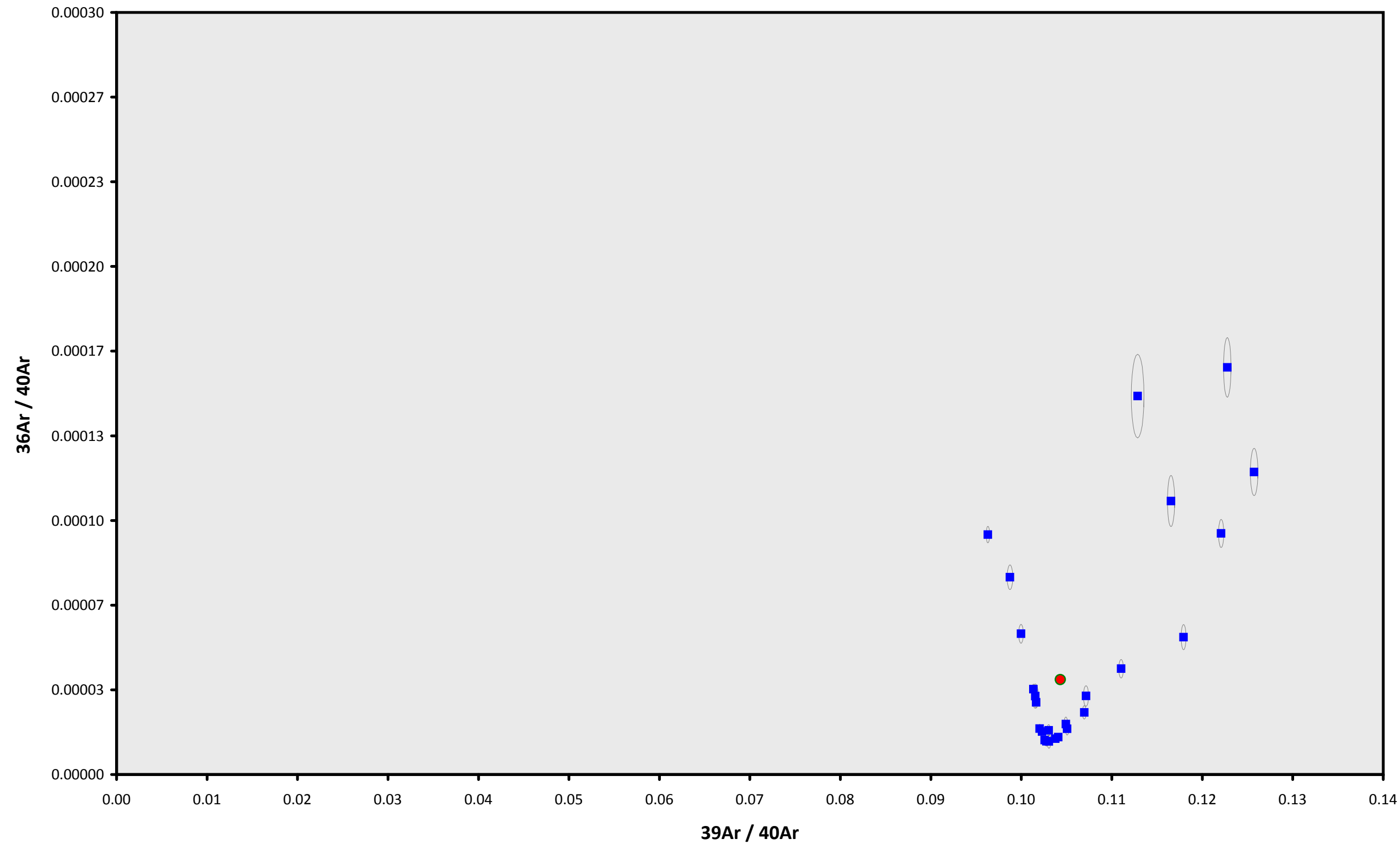
**TOTAL FUSION**  
**27.02 ± 0.06**

**Sample Info**

Groundmass  
Omura Guyot  
Susan Schnur

IRR = 13-OSU-05  
J = 0.00158808 ± 0.00000186

**13D05127.AGE >>> MV1203-D37-03 2X LCH >>> WALVIS RIDGE | MV1203 (13-INT-04) PROJECT**



**Ar-Ages in Ma**

**TOTAL FUSION**  
**27.02 ± 0.06**

**Sample Info**

**Groundmass**  
**Omura Guyot**  
**Susan Schnur**

**IRR = 13-OSU-05**  
**J = 0.00158808 ± 0.00000186**