

Relative Abundances		36Ar [fA]	%1σ	37Ar [fA]	%1σ	38Ar [fA]	%1σ	39Ar [fA]	%1σ	40Ar [fA]	%1σ	40(r)/39(k) ± 2σ	Age ± 2σ (Ma)	40Ar(r) (%)	39Ar(k) (%)	K/Ca ± 2σ
16D10775	1.0 %	0.5702456	0.361	15.3349	0.940	0.2348293	10.637	6.52634	0.349	313.3515	0.040	22.41074 ± 0.24659	64.51 ± 0.70	46.60	2.55	0.183 ± 0.004
16D10777	1.4 %	0.3508908	0.416	18.8527	0.852	0.1839113	13.644	7.53334	0.311	261.8063	0.048	21.21824 ± 0.17839	61.14 ± 0.51	60.95	2.94	0.172 ± 0.003
16D10778	1.8 %	0.3790805	0.395	29.3726	0.605	0.2150425	11.725	9.78968	0.247	319.1833	0.039	21.43743 ± 0.14186	61.76 ± 0.40	65.62	3.82	0.143 ± 0.002
16D10780	1.9 %	0.1201486	0.695	18.6706	0.849	0.1190971	21.368	5.55733	0.405	155.7249	0.079	21.94344 ± 0.20412	63.19 ± 0.58	78.13	2.17	0.128 ± 0.002
16D10781	2.0 %	0.1021970	0.793	20.8195	0.802	0.0991617	24.718	5.66653	0.412	154.4829	0.080	22.27364 ± 0.20723	64.13 ± 0.59	81.50	2.21	0.117 ± 0.002
16D10782	2.1 %	0.0990547	0.803	19.8165	0.778	0.0886041	27.755	5.04926	0.449	140.5577	0.088	22.40478 ± 0.22784	64.50 ± 0.64	80.27	1.97	0.109 ± 0.002
16D10784	2.2 %	0.0597347	1.116	20.1091	0.781	0.0716948	36.105	4.81815	0.491	124.1102	0.100	22.48334 ± 0.24191	64.72 ± 0.68	87.04	1.88	0.103 ± 0.002
16D10785	2.3 %	0.0255328	2.333	6.6366	2.274	0.0342106	72.507	1.64085	1.272	43.1825	0.285	22.09399 ± 0.62200	63.62 ± 1.76	83.72	0.64	0.106 ± 0.006
16D10786	2.4 %	0.0687549	1.083	17.7225	0.926	0.0724161	35.756	4.10766	0.506	112.6658	0.110	22.88458 ± 0.26298	65.85 ± 0.74	83.19	1.60	0.099 ± 0.002
16D10788	2.5 %	0.0421976	1.524	19.0095	0.852	0.0470921	55.302	4.12711	0.564	104.9260	0.118	22.83194 ± 0.28105	65.70 ± 0.79	89.53	1.61	0.093 ± 0.002
16D10789	2.6 %	0.0535417	1.198	17.0617	0.918	0.0633516	39.037	3.80289	0.634	100.3880	0.123	22.65538 ± 0.31209	65.21 ± 0.88	85.56	1.48	0.096 ± 0.002
16D10790	2.7 %	0.0205583	2.770	9.0686	1.636	0.0258331	96.071	2.02254	1.104	51.2056	0.241	22.73165 ± 0.54435	65.42 ± 1.54	89.51	0.79	0.096 ± 0.004
16D10792	2.8 %	0.0364718	1.747	15.5952	1.017	0.0183534	136.814	3.37835	0.685	86.0015	0.143	22.69671 ± 0.33953	65.32 ± 0.96	88.88	1.32	0.093 ± 0.002
16D10793	2.9 %	0.0186940	3.054	10.5073	1.486	0.0420406	61.284	2.26077	1.057	56.2901	0.219	22.88920 ± 0.51967	65.87 ± 1.47	91.64	0.88	0.092 ± 0.003
16D10794	3.0 %	0.0537373	1.261	8.9868	1.719	0.0445154	56.485	1.84986	1.215	57.4045	0.214	22.90158 ± 0.61378	65.90 ± 1.73	73.56	0.72	0.088 ± 0.004
16D10796	3.2 %	0.0457419	1.395	16.8225	0.954	0.0722051	34.039	3.56504	0.654	93.4295	0.132	22.85630 ± 0.32565	65.77 ± 0.92	86.94	1.39	0.091 ± 0.002
16D10797	3.4 %	0.0515450	1.263	15.4051	1.001	0.0369081	71.158	3.24433	0.681	86.8334	0.142	22.51191 ± 0.33871	64.80 ± 0.96	83.84	1.26	0.090 ± 0.002
16D10798	3.6 %	0.0871109	0.850	23.9394	0.707	0.1110998	22.681	5.25624	0.436	141.2812	0.088	22.40524 ± 0.21850	64.50 ± 0.62	83.10	2.05	0.094 ± 0.002
16D10800	3.8 %	0.1108480	0.696	27.7992	0.634	0.0916571	27.236	6.02139	0.391	165.3437	0.075	22.44903 ± 0.19633	64.62 ± 0.56	81.50	2.35	0.093 ± 0.001
16D10801	4.0 %	0.0617180	1.116	17.2976	0.903	0.0814587	30.493	3.81921	0.598	101.9659	0.121	22.34412 ± 0.29604	64.33 ± 0.84	83.44	1.49	0.095 ± 0.002
16D10802	4.3 %	0.0754972	0.953	24.7821	0.690	0.0729786	34.255	5.55745	0.405	144.6860	0.086	22.43498 ± 0.20301	64.58 ± 0.57	85.91	2.16	0.096 ± 0.002
16D10804	4.6 %	0.0312147	1.943	16.1617	0.956	0.0474262	53.270	3.80803	0.616	91.8460	0.134	22.09031 ± 0.29591	63.61 ± 0.84	91.33	1.48	0.101 ± 0.002
16D10805	4.9 %	0.0343222	1.816	16.0328	0.983	0.0997034	24.716	3.77984	0.572	91.6707	0.134	21.96272 ± 0.27799	63.25 ± 0.79	90.30	1.47	0.101 ± 0.002
16D10806	5.2 %	0.0588417	1.141	19.2901	0.868	0.0978501	24.649	4.75437	0.467	119.9020	0.103	21.93798 ± 0.22806	63.18 ± 0.65	86.75	1.85	0.106 ± 0.002
16D10808	5.5 %	0.0496570	1.322	17.9308	0.889	0.0759028	33.156	4.57779	0.498	112.4691	0.110	21.72502 ± 0.23922	62.57 ± 0.68	88.19	1.78	0.109 ± 0.002
16D10809	5.8 %	0.1231193	0.670	18.9086	0.877	0.0938357	27.500	5.06101	0.448	144.5527	0.085	21.71848 ± 0.22333	62.56 ± 0.63	75.85	1.97	0.115 ± 0.002
16D10810	6.2 %	0.0644096	1.097	23.3875	0.704	0.1090962	22.015	6.25029	0.370	151.9053	0.081	21.60398 ± 0.17828	62.23 ± 0.50	88.67	2.44	0.115 ± 0.002
16D10812	6.6 %	0.0539950	1.208	19.6938	0.798	0.1050283	23.624	5.63366	0.406	134.8103	0.091	21.41933 ± 0.19238	61.71 ± 0.54	89.30	2.20	0.123 ± 0.002
16D10813	7.0 %	0.0817381	0.898	21.5051	0.761	0.1112451	22.809	6.17694	0.369	152.6220	0.082	21.11804 ± 0.17593	60.85 ± 0.50	85.27	2.41	0.123 ± 0.002
16D10814	7.6 %	0.1708041	0.546	32.2170	0.581	0.1402869	17.547	8.93545	0.271	234.5140	0.053	20.92765 ± 0.13235	60.32 ± 0.38	79.54	3.48	0.119 ± 0.002
16D10816	8.3 %	0.2246650	0.483	45.6968	0.456	0.2064339	12.369	11.77221	0.205	305.6519	0.041	20.68039 ± 0.10338	59.61 ± 0.29	79.44	4.59	0.110 ± 0.001
16D10817	9.0 %	0.2918197	0.434	52.6161	0.433	0.2471834	10.119	13.58917	0.177	363.0882	0.034	20.72842 ± 0.09399	59.75 ± 0.27	77.38	5.30	0.111 ± 0.001
16D10818	9.8 %	✓ 0.3934887	0.404	68.6066	0.403	0.3065065	7.829	15.64539	0.163	430.5503	0.029	20.48940 ± 0.09156	59.07 ± 0.26	74.23	6.09	0.098 ± 0.001
16D10820	11.0 %	✓ 0.3452161	0.400	48.9346	0.450	0.2206730	11.595	11.84284	0.210	341.3964	0.037	20.59236 ± 0.11313	59.36 ± 0.32	71.23	4.61	0.104 ± 0.001
16D10821	13.0 %	✓ 0.8154458	0.325	156.7033	0.339	0.4937165	5.022	22.86190	0.126	697.0741	0.018	20.58166 ± 0.08726	59.33 ± 0.25	67.19	8.89	0.062 ± 0.000
16D10822	15.5 %	✓ 1.1010071	0.316	265.8251	0.330	0.5414296	4.239	19.46935	0.136	701.0314	0.018	20.55663 ± 0.12169	59.26 ± 0.35	56.56	7.54	0.031 ± 0.000
16D10824	18.5 %	✓ 0.6844944	0.349	155.9640	0.339	0.2714733	9.422	7.74707	0.299	348.0020	0.036	20.67338 ± 0.22600	59.59 ± 0.64	45.40	2.99	0.021 ± 0.000
16D10825	21.5 %	✓ 0.6230085	0.342	160.2410	0.338	0.2228630	11.111	5.64710	0.413	286.3090	0.044	20.72636 ± 0.29077	59.74 ± 0.82	40.10	2.16	0.015 ± 0.000
16D10827	24.5 %	✓ 0.5032368	0.365	151.0065	0.340	0.1952143	12.695	3.92175	0.575	215.9533	0.058	20.71283 ± 0.38135	59.71 ± 1.08	36.64	1.49	0.011 ± 0.000
Σ		8.0837852	0.097	1664.3255	0.102	5.4123294	2.888	257.06849	0.057	7738.1690	0.010					

Information on Analysis and Constants Used in Calculations

Project = **MV1203 (13-INT-04)**
 Sample = **MV1203-D16-03**
 Material = **Groundmass**
 Location = **Bulkington West**
 Region = **Walvis Ridge**
 Analyst = **Susan Schnur**
 Irradiation = **15-OSU-07 (7A28-15)**
 Position = **X: 0 | Y: 0 | Z/H: 48.35 mm**
 FCT-NM Age = **28.201 ± 0.023 Ma**
 FCT-NM Reference = **Kuiper et al (2008)**
 FCT-NM 40Ar/39Ar Ratio = **9.69809 ± 0.01426**
 FCT-NM J-value = **0.00162067 ± 0.00000238**
 Air Shot 40Ar/36Ar = **304.7190 ± 0.4297**
 Air Shot MDF = **0.99242670 ± 0.00066944 (LIN)**
 Experiment Type = **Incremental Heating**
 Extraction Method = **Bulk Laser Heating**
 Heating = **77 sec**
 Isolation = **3.00 min**
 Instrument = **ARGUS-VI-D**
 Preferred Age = **Inverse Isochron**
 Age Classification = **Eruption Age**
 IGSN = **IESS10079**
 Rock Class = **Igneous>Volcanic>Mafic**
 Lithology = **Basalt**
 Lat-Lon = **31°31.3'S - 1°56.9'W**

Age Equations = **Min et al. (2000)**
 Negative Intensities = **Allowed**
 Collector Calibrations = **36Ar**
 Decay 40K = **5.530 ± 0.048 E-10 1/a**
 Decay 39Ar = **2.940 ± 0.016 E-07 1/h**
 Decay 37Ar = **8.230 ± 0.012 E-04 1/h**
 Decay 36Cl = **2.257 ± 0.015 E-06 1/a**
 Decay 40K(EC,β⁺) = **0.580 ± 0.009 E-10 1/a**
 Decay 40K(β⁻) = **4.950 ± 0.043 E-10 1/a**
 Atmospheric 40/36(a) = **295.50**
 Atmospheric 38/36(a) = **0.1869**
 Production 39/37(ca) = **0.0006756 ± 0.0000089**
 Production 38/37(ca) = **0.0000718 ± 0.0000092**
 Production 36/37(ca) = **0.0002663 ± 0.0000004**
 Production 40/39(k) = **0.003823 ± 0.000102**
 Production 38/39(k) = **0.012031 ± 0.000019**
 Production 36/38(cl) = **262.80 ± 1.71**
 Scaling Ratio K/Ca = **0.430**
 Abundance Ratio 40K/K = **1.1700 ± 0.0100 E-04**
 Atomic Weight K = **39.0983 ± 0.0001 g**

Results	40(a)/36(a) ± 2σ	40(r)/39(k) ± 2σ	Age ± 2σ (Ma)	MSWD	39Ar(k) (%n)	K/Ca ± 2σ
Age Plateau		20.56451 ± 0.04797 ± 0.23%	59.29 ± 0.22 ± 0.37%	0.98 44%	33.78 7	0.020 ± 0.012
			Full External Error ± 1.35 Analytical Error ± 0.14	2.15 1.0000	2σ Confidence Limit Error Magnification	
Total Fusion Age		21.40873 ± 0.03105 ± 0.15%	61.68 ± 0.20 ± 0.32%		39	0.066 ± 0.000
			Full External Error ± 1.39 Analytical Error ± 0.09			
Normal Isochron	297.60 ± 2.29 ± 0.77%	20.48288 ± 0.10108 ± 0.49%	59.05 ± 0.33 ± 0.57%	0.51 77%	33.78 7	
			Full External Error ± 1.36 Analytical Error ± 0.29	2.26 1.0000	2σ Confidence Limit Error Magnification	
				8 0.0001597458	Number of Iterations Convergence	
Inverse Isochron	297.59 ± 2.29 ± 0.77%	20.48373 ± 0.10110 ± 0.49%	59.06 ± 0.33 ± 0.57%	0.51 77%	33.78 7	
			Full External Error ± 1.36 Analytical Error ± 0.29	2.26 1.0000	2σ Confidence Limit Error Magnification	
Notes				2 0.0000194257	Number of Iterations Convergence	
			Low-T is variable but high-T yields a small plateau. Isochron intercept is Good.	38%	Spreading Factor	

Incremental Heating		36Ar(a) [fA]	37Ar(ca) [fA]	38Ar(cl) [fA]	39Ar(k) [fA]	40Ar(r) [fA]	Age ± 2σ (Ma)	40Ar(r) (%)	39Ar(k) (%)	K/Ca ± 2σ
16D10775	1.0 %	0.5661548	15.3349	0.0495202	6.51598	146.0279	64.51 ± 0.70	46.60	2.55	0.183 ± 0.004
16D10777	1.4 %	0.3458664	18.8527	0.0274349	7.52060	159.5740	61.14 ± 0.51	60.95	2.94	0.172 ± 0.003
16D10778	1.8 %	0.3712549	29.3726	0.0260051	9.76983	209.4402	61.76 ± 0.40	65.62	3.82	0.143 ± 0.002
16D10780	1.9 %	0.1151723	18.6706	0.0295224	5.54472	121.6702	63.19 ± 0.58	78.13	2.17	0.128 ± 0.002
16D10781	2.0 %	0.0966511	20.8195	0.0115981	5.65246	125.9008	64.13 ± 0.59	81.50	2.21	0.117 ± 0.002
16D10782	2.1 %	0.0937762	19.8165	0.0090679	5.03587	112.8276	64.50 ± 0.64	80.27	1.97	0.109 ± 0.002
16D10784	2.2 %	0.0543794	20.1091	0.0022837	4.80457	108.0227	64.72 ± 0.68	87.04	1.88	0.103 ± 0.002
16D10785	2.3 %	0.0237641	6.6366	0.0096054	1.63637	36.1539	63.62 ± 1.76	83.72	0.64	0.106 ± 0.006
16D10786	2.4 %	0.0640340	17.7225	0.0099005	4.09569	93.7281	65.85 ± 0.74	83.19	1.60	0.099 ± 0.002
16D10788	2.5 %	0.0371353	19.0095	0.0000000	4.11427	93.9368	65.70 ± 0.79	89.53	1.61	0.093 ± 0.002
16D10789	2.6 %	0.0489972	17.0617	0.0073551	3.79136	85.8948	65.21 ± 0.88	85.56	1.48	0.096 ± 0.002
16D10790	2.7 %	0.0181433	9.0686	0.0000000	2.01642	45.8365	65.42 ± 1.54	89.51	0.79	0.096 ± 0.004
16D10792	2.8 %	0.0323188	15.5952	0.0000000	3.36782	76.4384	65.32 ± 0.96	88.88	1.32	0.093 ± 0.002
16D10793	2.9 %	0.0158943	10.5073	0.0112016	2.25367	51.5847	65.87 ± 1.47	91.64	0.88	0.092 ± 0.003
16D10794	3.0 %	0.0513424	8.9868	0.0120915	1.84379	42.2258	65.90 ± 1.73	73.56	0.72	0.088 ± 0.004
16D10796	3.2 %	0.0412591	16.8225	0.0205317	3.55368	81.2239	65.77 ± 0.92	86.94	1.39	0.091 ± 0.002
16D10797	3.4 %	0.0474426	15.4051	0.0000000	3.23392	72.8018	64.80 ± 0.96	83.84	1.26	0.090 ± 0.002
16D10798	3.6 %	0.0807314	23.9394	0.0312490	5.24007	117.4050	64.50 ± 0.62	83.10	2.05	0.094 ± 0.002
16D10800	3.8 %	0.1034450	27.7992	0.0000000	6.00261	134.7527	64.62 ± 0.56	81.50	2.35	0.093 ± 0.001
16D10801	4.0 %	0.0571082	17.2976	0.0237349	3.80753	85.0758	64.33 ± 0.84	83.44	1.49	0.095 ± 0.002
16D10802	4.3 %	0.0688977	24.7821	0.0000000	5.54070	124.3056	64.58 ± 0.57	85.91	2.16	0.096 ± 0.002
16D10804	4.6 %	0.0269108	16.1617	0.0000000	3.79711	83.8794	63.61 ± 0.84	91.33	1.48	0.101 ± 0.002
16D10805	4.9 %	0.0300458	16.0328	0.0475917	3.76901	82.7778	63.25 ± 0.79	90.30	1.47	0.101 ± 0.002
16D10806	5.2 %	0.0537005	19.2901	0.0293854	4.74134	104.0154	63.18 ± 0.65	86.75	1.85	0.106 ± 0.002
16D10808	5.5 %	0.0448804	17.9308	0.0112975	4.56568	99.1895	62.57 ± 0.68	88.19	1.78	0.109 ± 0.002
16D10809	5.8 %	0.1180825	18.9086	0.0096731	5.04824	109.6400	62.56 ± 0.63	75.85	1.97	0.115 ± 0.002
16D10810	6.2 %	0.0581784	23.3875	0.0215363	6.23449	134.6897	62.23 ± 0.50	88.67	2.44	0.115 ± 0.002
16D10812	6.6 %	0.0487466	19.6938	0.0268851	5.62035	120.3842	61.71 ± 0.54	89.30	2.20	0.123 ± 0.002
16D10813	7.0 %	0.0760083	21.5051	0.0213552	6.16241	130.1380	60.85 ± 0.50	85.27	2.41	0.123 ± 0.002
16D10814	7.6 %	0.1622247	32.2170	0.0004134	8.91369	186.5425	60.32 ± 0.38	79.54	3.48	0.119 ± 0.002
16D10816	8.3 %	0.2124928	45.6968	0.0221780	11.74134	242.8154	59.61 ± 0.29	79.44	4.59	0.110 ± 0.001
16D10817	9.0 %	0.2778040	52.6161	0.0284203	13.55362	280.9453	59.75 ± 0.27	77.38	5.30	0.111 ± 0.001
16D10818	9.8 %	✓ 0.3752141	68.6006	0.0437814	15.59904	319.6149	59.07 ± 0.26	74.23	6.09	0.098 ± 0.001
16D10820	11.0 %	✓ 0.3321829	48.9346	0.0129911	11.80978	243.1912	59.36 ± 0.32	71.23	4.61	0.104 ± 0.001
16D10821	13.0 %	✓ 0.7737065	156.7033	0.0640817	22.75603	468.3569	59.33 ± 0.25	67.19	8.89	0.062 ± 0.000
16D10822	15.5 %	✓ 1.0302038	265.8251	0.0977232	19.28976	396.5325	59.26 ± 0.35	56.56	7.54	0.031 ± 0.000
16D10824	18.5 %	✓ 0.6429543	155.9640	0.0481696	7.64170	157.9798	59.59 ± 0.64	45.40	2.99	0.021 ± 0.000
16D10825	21.5 %	✓ 0.5803311	160.2410	0.0362561	5.53884	114.8000	59.74 ± 0.82	40.10	2.16	0.015 ± 0.000
16D10827	24.5 %	✓ 0.4630163	151.0065	0.0518791	3.81973	79.1173	59.71 ± 1.08	36.64	1.49	0.011 ± 0.000
Σ		7.6404524	1664.3255	0.8547202	255.94407	5479.4368				

Information on Analysis	Results	40(r)/39(k) ± 2σ	Age ± 2σ (Ma)	MSWD	39Ar(k) (%n)	K/Ca ± 2σ
Project = MV1203 (13-INT-04) Sample = MV1203-D16-03 Material = Groundmass Location = Bulkington West Region = Walvis Ridge Analyst = Susan Schnur Irradiation = 15-OSU-07 (7A28-15) J = 0.00162067 ± 0.00000238 FCT-NM = 28.201 ± 0.023 Ma	Age Plateau	20.56451 ± 0.04797 ± 0.23%	59.29 ± 0.22 ± 0.37%	0.98 44%	33.78 7	0.020 ± 0.012
			Full External Error ± 1.35 Analytical Error ± 0.14	2.15 1.0000	2σ Confidence Limit Error Magnification	
	Total Fusion Age	21.40873 ± 0.03105 ± 0.15%	61.68 ± 0.20 ± 0.32%		39	0.066 ± 0.000
			Full External Error ± 1.39 Analytical Error ± 0.09			

Normal Isochron		39(k)/36(a) ± 2σ	40(a+r)/36(a) ± 2σ	r.i.
16D10775	1.0 %	11.51 ± 0.12	553.43 ± 4.04	0.7162
16D10777	1.4 %	21.74 ± 0.23	756.87 ± 6.44	0.7994
16D10778	1.8 %	26.32 ± 0.25	859.64 ± 6.97	0.8485
16D10780	1.9 %	48.14 ± 0.80	1351.92 ± 19.76	0.8678
16D10781	2.0 %	58.48 ± 1.09	1598.13 ± 26.98	0.8935
16D10782	2.1 %	53.70 ± 1.03	1498.66 ± 25.60	0.8788
16D10784	2.2 %	88.35 ± 2.34	2281.97 ± 56.24	0.9250
16D10785	2.3 %	68.86 ± 3.88	1816.87 ± 91.87	0.8859
16D10786	2.4 %	63.96 ± 1.62	1759.22 ± 41.15	0.9127
16D10788	2.5 %	110.79 ± 4.05	2825.08 ± 98.31	0.9486
16D10789	2.6 %	77.38 ± 2.26	2048.56 ± 53.99	0.8959
16D10790	2.7 %	111.14 ± 7.41	2821.86 ± 178.09	0.9405
16D10792	2.8 %	104.21 ± 4.36	2660.64 ± 105.39	0.9420
16D10793	2.9 %	141.79 ± 10.65	3540.98 ± 255.56	0.9575
16D10794	3.0 %	35.91 ± 1.29	1117.93 ± 29.95	0.7259
16D10796	3.2 %	86.13 ± 2.90	2264.13 ± 70.44	0.9176
16D10797	3.4 %	68.16 ± 2.09	1830.02 ± 50.60	0.8908
16D10798	3.6 %	64.91 ± 1.32	1749.77 ± 32.32	0.8988
16D10800	3.8 %	58.03 ± 0.98	1598.15 ± 24.02	0.8811
16D10801	4.0 %	66.67 ± 1.80	1785.23 ± 43.38	0.8912
16D10802	4.3 %	80.42 ± 1.81	2099.70 ± 44.10	0.9290
16D10804	4.6 %	141.10 ± 6.61	3412.44 ± 154.46	0.9629
16D10805	4.9 %	125.44 ± 5.41	3050.56 ± 127.10	0.9620
16D10806	5.2 %	88.29 ± 2.36	2232.45 ± 56.15	0.9335
16D10808	5.5 %	101.73 ± 3.15	2505.59 ± 73.68	0.9440
16D10809	5.8 %	42.75 ± 0.71	1224.00 ± 17.25	0.8351
16D10810	6.2 %	107.16 ± 2.73	2610.61 ± 63.71	0.9544
16D10812	6.6 %	115.30 ± 3.23	2765.09 ± 74.32	0.9547
16D10813	7.0 %	81.08 ± 1.68	2007.66 ± 38.99	0.9309
16D10814	7.6 %	54.95 ± 0.70	1445.40 ± 16.71	0.9006
16D10816	8.3 %	55.26 ± 0.61	1438.20 ± 14.74	0.9246
16D10817	9.0 %	48.79 ± 0.48	1306.81 ± 11.96	0.9290
16D10818	9.8 % ✓	41.57 ± 0.38	1147.32 ± 9.77	0.9312
16D10820	11.0 % ✓	35.55 ± 0.33	1027.60 ± 8.59	0.8885
16D10821	13.0 % ✓	29.41 ± 0.22	900.84 ± 6.19	0.9364
16D10822	15.5 % ✓	18.72 ± 0.14	680.41 ± 4.61	0.9244
16D10824	18.5 % ✓	11.89 ± 0.11	541.21 ± 4.05	0.7715
16D10825	21.5 % ✓	9.54 ± 0.11	493.32 ± 3.66	0.6528
16D10827	24.5 % ✓	8.25 ± 0.12	466.37 ± 3.75	0.5524

Results	40(a)/36(a) ± 2σ	40(r)/39(k) ± 2σ	Age ± 2σ (Ma)	MSWD
Normal Isochron	297.60 ± 2.29 ± 0.77%	20.48288 ± 0.10108 ± 0.49%	59.05 ± 0.33 ± 0.57%	0.51 77%
			Full External Error ± 1.36 Analytical Error ± 0.29	
Statistics	2σ Confidence Limit Error Magnification Number of Data Points	2.26 1.0000 7	Convergence Number of Iterations Calculated Line	0.000159745753 8 Weighted York-2

Inverse Isochron		39(k)/40(a+r) ± 2σ	36(a)/40(a+r) ± 2σ	r.i.
16D10775	1.0 %	0.0207961 ± 0.0001463	0.00180692 ± 0.00001320	0.0125
16D10777	1.4 %	0.0287290 ± 0.0001813	0.00132122 ± 0.00001124	0.0170
16D10778	1.8 %	0.0306124 ± 0.0001534	0.00116328 ± 0.00000943	0.0152
16D10780	1.9 %	0.0356107 ± 0.0002945	0.00073969 ± 0.00001081	0.0209
16D10781	2.0 %	0.0365947 ± 0.0003078	0.00062573 ± 0.00001056	0.0181
16D10782	2.1 %	0.0358327 ± 0.0003290	0.00066726 ± 0.00001140	0.0197
16D10784	2.2 %	0.0387178 ± 0.0003894	0.00043822 ± 0.00001080	0.0161
16D10785	2.3 %	0.0378998 ± 0.0009908	0.00055040 ± 0.00002783	0.0245
16D10786	2.4 %	0.0363576 ± 0.0003775	0.00056843 ± 0.00001330	0.0198
16D10788	2.5 %	0.0392170 ± 0.0004535	0.00035397 ± 0.00001232	0.0138
16D10789	2.6 %	0.0377726 ± 0.0004896	0.00048815 ± 0.00001287	0.0177
16D10790	2.7 %	0.0393848 ± 0.0008925	0.00035438 ± 0.00002236	0.0162
16D10792	2.8 %	0.0391659 ± 0.0005501	0.00037585 ± 0.00001489	0.0147
16D10793	2.9 %	0.0400428 ± 0.0008670	0.00028241 ± 0.00002038	0.0122
16D10794	3.0 %	0.0321232 ± 0.0007949	0.00089451 ± 0.00002397	0.0277
16D10796	3.2 %	0.0380414 ± 0.0005091	0.00044167 ± 0.00001374	0.0167
16D10797	3.4 %	0.0372481 ± 0.0005200	0.00054644 ± 0.00001511	0.0209
16D10798	3.6 %	0.0370949 ± 0.0003313	0.00057150 ± 0.00001056	0.0187
16D10800	3.8 %	0.0363089 ± 0.0002901	0.00062572 ± 0.00000941	0.0187
16D10801	4.0 %	0.0373465 ± 0.0004573	0.00056015 ± 0.00001361	0.0198
16D10802	4.3 %	0.0383003 ± 0.0003183	0.00047626 ± 0.00001000	0.0168
16D10804	4.6 %	0.0413487 ± 0.0005225	0.00029305 ± 0.00001326	0.0126
16D10805	4.9 %	0.0411212 ± 0.0004843	0.00032781 ± 0.00001366	0.0147
16D10806	5.2 %	0.0395494 ± 0.0003795	0.00044794 ± 0.00001127	0.0175
16D10808	5.5 %	0.0406013 ± 0.0004150	0.00039911 ± 0.00001174	0.0161
16D10809	5.8 %	0.0349278 ± 0.0003197	0.00081699 ± 0.00001152	0.0226
16D10810	6.2 %	0.0410484 ± 0.0003118	0.00038305 ± 0.00000935	0.0143
16D10812	6.6 %	0.0416975 ± 0.0003477	0.00036165 ± 0.00000972	0.0149
16D10813	7.0 %	0.0403832 ± 0.0003056	0.00049809 ± 0.00000967	0.0181
16D10814	7.6 %	0.0380147 ± 0.0002103	0.00069185 ± 0.00000800	0.0177
16D10816	8.3 %	0.0384197 ± 0.0001613	0.00069531 ± 0.00000713	0.0155
16D10817	9.0 %	0.0373341 ± 0.0001353	0.00076522 ± 0.00000700	0.0143
16D10818	9.8 % ✓	0.0362355 ± 0.0001202	0.00087160 ± 0.00000742	0.0123
16D10820	11.0 % ✓	0.0345971 ± 0.0001482	0.00097314 ± 0.00000814	0.0152
16D10821	13.0 % ✓	0.0326491 ± 0.0000838	0.00111007 ± 0.00000763	0.0077
16D10822	15.5 % ✓	0.0275191 ± 0.0000767	0.00146971 ± 0.00000996	0.0070
16D10824	18.5 % ✓	0.0219606 ± 0.0001342	0.00184771 ± 0.00001382	0.0115
16D10825	21.5 % ✓	0.0193471 ± 0.0001641	0.00202709 ± 0.00001502	0.0122
16D10827	24.5 % ✓	0.0176889 ± 0.0002102	0.00214420 ± 0.00001723	0.0139

Results	40(a)/36(a) ± 2σ	40(r)/39(k) ± 2σ	Age ± 2σ (Ma)	MSWD
Inverse Isochron	297.59 ± 2.29 ± 0.77%	20.48373 ± 0.10110 ± 0.49%	59.06 ± 0.33 ± 0.57%	0.51 77%
			Full External Error ± 1.36 Analytical Error ± 0.29	
Statistics	2σ Confidence Limit Error Magnification Number of Data Points Spreading Factor	2.26 1.0000 7 38.0%	Convergence Number of Iterations Calculated Line	0.0000194257 2 Weighted York-2

Degassing Patterns		36Ar(a) [fA]	%1σ	36Ar(c) [fA]	%1σ	36Ar(ca) [fA]	%1σ	36Ar(cl) [fA]	%1σ	37Ar(ca) [fA]	%1σ	38Ar(a) [fA]	%1σ	38Ar(c) [fA]	%1σ	38Ar(k) [fA]	%1σ	38Ar(ca) [fA]	%1σ	38Ar(cl) [fA]	%1σ	39Ar(k) [fA]	%1σ	39Ar(ca) [fA]	%1σ	40Ar(r) [fA]	%1σ	40Ar(a) [fA]	%1σ	40Ar(c) [fA]	%1σ	40Ar(k) [fA]	%1σ
16D10775	1.0 %	0.5661548	0.36	0.0000000	0.00	0.0040837	0.95	0.0000071	50.46	15.3349	0.94	0.1058143	0.36	0.0000000	0.00	0.0783937	0.38	0.0011010	12.85	0.0495202	50.47	6.51598	0.35	0.0103603	1.62	146.0279	0.42	167.2988	0.36	0.0000000	0.00	0.0249106	2.68
16D10777	1.4 %	0.3458664	0.42	0.0000000	0.00	0.0050205	0.87	0.0000039	91.49	18.8527	0.85	0.0646424	0.42	0.0000000	0.00	0.0904804	0.35	0.0013536	12.85	0.0274349	91.49	7.52060	0.31	0.0127369	1.57	159.5740	0.28	102.2035	0.42	0.0000000	0.00	0.0287513	2.68
16D10778	1.8 %	0.3712549	0.40	0.0000000	0.00	0.0078219	0.62	0.0000037	96.99	29.3726	0.60	0.0693875	0.40	0.0000000	0.00	0.1175409	0.29	0.0021089	12.83	0.0260051	96.99	9.76983	0.25	0.0198441	1.45	209.4402	0.22	109.7058	0.40	0.0000000	0.00	0.0373501	2.67
16D10780	1.9 %	0.1151723	0.73	0.0000000	0.00	0.0049720	0.86	0.0000042	86.22	18.6706	0.85	0.0215257	0.73	0.0000000	0.00	0.0667085	0.44	0.0013406	12.85	0.0295224	86.22	5.54472	0.41	0.0126139	1.57	121.6702	0.23	34.0334	0.73	0.0000000	0.00	0.0211975	2.69
16D10781	2.0 %	0.0966511	0.84	0.0000000	0.00	0.0055442	0.82	0.0000017	211.37	20.8195	0.80	0.0180641	0.84	0.0000000	0.00	0.0680047	0.44	0.0014948	12.85	0.0115981	211.37	5.65246	0.41	0.0140656	1.54	125.9008	0.21	28.5604	0.84	0.0000000	0.00	0.0216094	2.69
16D10782	2.1 %	0.0937762	0.85	0.0000000	0.00	0.0052771	0.79	0.0000013	271.24	19.8165	0.78	0.0175268	0.85	0.0000000	0.00	0.0605866	0.48	0.0014228	12.84	0.0090679	271.24	5.03587	0.45	0.0133881	1.53	112.8276	0.24	27.7109	0.85	0.0000000	0.00	0.0192521	2.70
16D10784	2.2 %	0.0543794	1.23	0.0000000	0.00	0.0053551	0.80	0.0000003	#####	20.1091	0.78	0.0101635	1.23	0.0000000	0.00	0.0578037	0.52	0.0014438	12.84	0.0022837	#####	4.80457	0.49	0.0135857	1.53	108.0227	0.22	16.0691	1.23	0.0000000	0.00	0.0183679	2.71
16D10785	2.3 %	0.0237641	2.51	0.0000000	0.00	0.0017673	2.28	0.0000014	258.27	6.6366	2.27	0.0044415	2.51	0.0000000	0.00	0.0196872	1.29	0.0004765	13.02	0.0096054	258.27	1.63637	1.28	0.0044837	2.63	36.1539	0.59	7.0223	2.51	0.0000000	0.00	0.0062558	2.95
16D10786	2.4 %	0.0640340	1.16	0.0000000	0.00	0.0047195	0.94	0.0000014	261.57	17.7225	0.93	0.0119680	1.16	0.0000000	0.00	0.0492752	0.53	0.0012725	12.85	0.0099005	261.57	4.09569	0.51	0.0119733	1.61	93.7281	0.27	18.9220	1.16	0.0000000	0.00	0.0156578	2.71
16D10788	2.5 %	0.0371353	1.74	0.0000000	0.00	0.0050622	0.86	0.0000000	0.00	19.0095	0.85	0.0069406	1.74	0.0000000	0.00	0.0494988	0.59	0.0013649	12.85	0.0000000	0.00	4.11427	0.57	0.0128428	1.57	93.9368	0.24	10.9735	1.74	0.0000000	0.00	0.0157289	2.72
16D10789	2.6 %	0.0489972	1.31	0.0000000	0.00	0.0045435	0.93	0.0000011	336.28	17.0617	0.92	0.0091576	1.31	0.0000000	0.00	0.0456139	0.66	0.0012250	12.85	0.0073551	336.28	3.79136	0.64	0.0115269	1.61	85.8948	0.26	14.4787	1.31	0.0000000	0.00	0.0144944	2.74
16D10790	2.7 %	0.0181433	3.15	0.0000000	0.00	0.0024150	1.64	0.0000000	0.00	9.0686	1.64	0.0033910	3.15	0.0000000	0.00	0.0242595	1.12	0.0006511	12.92	0.0000000	0.00	2.01642	1.11	0.0061268	2.10	45.8365	0.46	5.3613	3.15	0.0000000	0.00	0.0077088	2.88
16D10792	2.8 %	0.0323188	1.98	0.0000000	0.00	0.0041530	1.03	0.0000000	0.00	15.5952	1.02	0.0060404	1.98	0.0000000	0.00	0.0405182	0.71	0.0011197	12.86	0.0000000	0.00	3.36782	0.69	0.0105361	1.67	76.4384	0.29	9.5502	1.98	0.0000000	0.00	0.0128752	2.75
16D10793	2.9 %	0.0158943	3.60	0.0000000	0.00	0.0027981	1.49	0.0000016	230.03	10.5073	1.49	0.0029706	3.60	0.0000000	0.00	0.0271139	1.07	0.0007544	12.91	0.0112016	230.03	2.25367	1.06	0.0070987	1.99	51.5847	0.41	4.6968	3.60	0.0000000	0.00	0.0086158	2.86
16D10794	3.0 %	0.0513424	1.32	0.0000000	0.00	0.0023932	1.73	0.0000017	207.97	8.9868	1.72	0.0095959	1.32	0.0000000	0.00	0.0221827	1.23	0.0006453	12.93	0.0120915	207.97	1.84379	1.22	0.0060715	2.17	42.2258	0.56	15.1717	1.32	0.0000000	0.00	0.0070488	2.93
16D10796	3.2 %	0.0412591	1.55	0.0000000	0.00	0.0044798	0.97	0.0000030	119.72	16.8225	0.95	0.0077113	1.55	0.0000000	0.00	0.0427543	0.68	0.0012079	12.86	0.0205317	119.72	3.55368	0.66	0.0113653	1.63	81.2239	0.28	12.1921	1.55	0.0000000	0.00	0.0135857	2.74
16D10797	3.4 %	0.0474426	1.38	0.0000000	0.00	0.0041024	1.01	0.0000000	0.00	15.4051	1.00	0.0088670	1.38	0.0000000	0.00	0.0389073	0.70	0.0011061	12.86	0.0000000	0.00	3.23392	0.68	0.0104077	1.66	72.8018	0.31	14.0193	1.38	0.0000000	0.00	0.0123633	2.75
16D10798	3.6 %	0.0807314	0.92	0.0000000	0.00	0.0063751	0.72	0.0000045	80.66	23.9394	0.71	0.0108887	0.92	0.0000000	0.00	0.0630433	0.47	0.0017188	12.84	0.0312490	80.66	5.24007	0.44	0.0161735	1.50	117.4050	0.21	23.8561	0.92	0.0000000	0.00	0.0200328	2.70
16D10800	3.8 %	0.1034450	0.75	0.0000000	0.00	0.0074029	0.65	0.0000000	0.00	27.7992	0.63	0.0193339	0.75	0.0000000	0.00	0.0722174	0.42	0.0019960	12.84	0.0000000	0.00	6.00261	0.39	0.0187812	1.46	134.7527	0.19	30.5680	0.75	0.0000000	0.00	0.0229480	2.69
16D10801	4.0 %	0.0571082	1.21	0.0000000	0.00	0.0046064	0.92	0.0000034	104.67	17.2976	0.90	0.0106735	1.21	0.0000000	0.00	0.0458083	0.62	0.0012420	12.85	0.0237349	104.67	3.80753	0.60	0.0116863	1.60	85.0758	0.28	16.8755	1.21	0.0000000	0.00	0.0145562	2.73
16D10802	4.3 %	0.0688977	1.05	0.0000000	0.00	0.0065995	0.71	0.0000000	0.00	24.7821	0.69	0.0128770	1.05	0.0000000	0.00	0.0666602	0.44	0.0017794	12.84	0.0000000	0.00	5.54070	0.41	0.0167428	1.49	124.3056	0.20	20.3593	1.05	0.0000000	0.00	0.0211821	2.69
16D10804	4.6 %	0.0269108	2.26	0.0000000	0.00	0.0043039	0.97	0.0000000	0.00	16.1617	0.96	0.0050296	2.26	0.0000000	0.00	0.0456831	0.64	0.0011604	12.86	0.0000000	0.00	3.79711	0.62	0.0109189	1.63	83.8794	0.26	7.9521	2.26	0.0000000	0.00	0.0145164	2.73
16D10805	4.9 %	0.0300458	2.08	0.0000000	0.00	0.0042695	0.99	0.0000068	51.79	16.0328	0.98	0.0056156	2.08	0.0000000	0.00	0.0453450	0.60	0.0011512	12.86	0.0475917	51.80	3.76901	0.57	0.0108318	1.65	82.7778	0.27	8.8785	2.08	0.0000000	0.00	0.0144089	2.72
16D10806	5.2 %	0.0537005	1.25	0.0000000	0.00	0.0051369	0.88	0.0000042	82.09	19.2901	0.87	0.0100366	1.25	0.0000000	0.00	0.0570430	0.50	0.0013850	12.85	0.0293854	82.10	4.74134	0.47	0.0130324	1.58	104.0154	0.22	15.8685	1.25	0.0000000	0.00	0.0181261	2.70
16D10808	5.5 %	0.0448804	1.47	0.0000000	0.00	0.0047750	0.90	0.0000016	222.79	17.9308	0.89	0.0083881	1.47	0.0000000	0.00	0.0549297	0.52	0.0012874	12.85	0.0112975	222.79	4.56568	0.50	0.0121141	1.59	99.1895	0.23	13.2622	1.47	0.0000000	0.00	0.0174546	2.71
16D10809	5.8 %	0.1180825	0.70	0.0000000	0.00	0.0050354	0.89	0.0000014	266.80	18.9086	0.88	0.0220696	0.70	0.0000000	0.00	0.0607353	0.48	0.0013576	12.85	0.0096731	266.80	5.04824	0.45	0.0127747	1.58	109.6400	0.25	34.8934	0.70	0.0000000	0.00	0.0192994	2.70
16D10810	6.2 %	0.0581784	1.22	0.0000000	0.00	0.0062281	0.72	0.0000031	111.54	23.3875	0.70	0.0108735	1.22	0.0000000	0.00	0.0750071	0.40	0.0016792	12.84	0.0215363	111.54	6.23449	0.37	0.0158006	1.50	134.6897	0.18	17.1917	1.22	0.0000000	0.00	0.0238344	2.69
16D10812	6.6 %	0.0487466	1.34	0.0000000	0.00	0.0052445	0.81	0.0000039	92.31	19.6938	0.80	0.0091107	1.34	0.0000000	0.00	0.0676185	0.44	0.0014140	12.84	0.0268851	92.31	5.62035	0.41	0.0133052	1.54	120.3842	0.19	14.4046	1.34	0.0000000	0.00	0.0214866	2.69
16D10813	7.0 %	0.0760083	0.97	0.0000000	0.00	0.0057268	0.78	0.0000031	118.84	21.5051	0.76	0.0142059	0.97	0.0000000	0.00	0.0741399	0.40	0.0015441	12.84	0.0213552	118.84	6.16241	0.37	0.0145288	1.52	130.1380	0.19	22.4604	0.97	0.0000000	0.00	0.0235589	2.69
16D10814	7.6 %	0.1622247	0.58	0.0000000	0.00	0.0085794	0.60	0.0000001	#####	32.2170	0.58	0.0303198	0.58	0.0000000	0.00	0.1072406	0.32	0.0023132	12.83	0.0004134	#####	8.91369	0.27	0.0217658	1.44	186.5425	0.16	47.9374	0.58	0.0000000	0.00	0.0340770	2.67
16D10816	8.3 %	0.2124928	0.51	0.0000000	0.00	0.0121691	0.48	0.0000032	115.17	45.6968	0.46	0.0397149	0.51	0.0																			

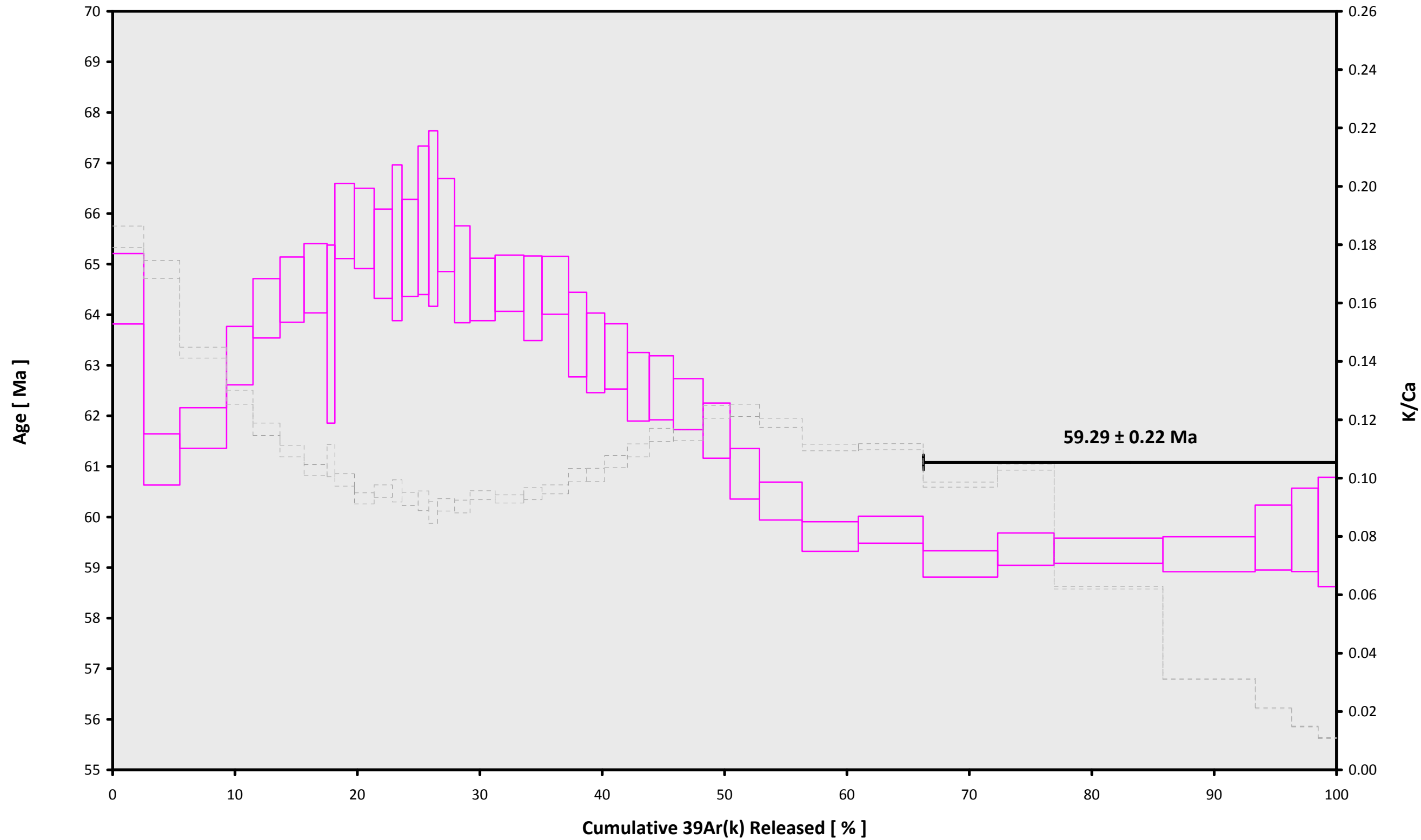
Additional Parameters		40Ar/39Ar	1σ	37Ar/39Ar	1σ	36Ar/39Ar	1σ	Time (days)	37Ar (decay)	39Ar (decay)	40Ar (moles)
16D10775	1.0 %	48.013391	0.168645	2.349702	0.023552	0.087376	0.000438	88.328	5.738043	1.00062432	1.504E-11
16D10777	1.4 %	34.753009	0.109497	2.502569	0.022709	0.046578	0.000242	88.342	5.739696	1.00062442	1.257E-11
16D10778	1.8 %	32.604066	0.081519	3.000359	0.019601	0.038722	0.000180	88.350	5.740562	1.00062447	1.532E-11
16D10780	1.9 %	28.021508	0.115623	3.359640	0.031593	0.021620	0.000174	88.365	5.742216	1.00062458	7.475E-12
16D10781	2.0 %	27.262359	0.114358	3.674113	0.033133	0.018035	0.000161	88.372	5.743083	1.00062463	7.415E-12
16D10782	2.1 %	27.837300	0.127453	3.924644	0.035269	0.019618	0.000181	88.380	5.743949	1.00062469	6.747E-12
16D10784	2.2 %	25.758876	0.129172	4.173617	0.038509	0.012398	0.000151	88.394	5.745525	1.00062478	5.957E-12
16D10785	2.3 %	26.317086	0.343109	4.044590	0.105406	0.015561	0.000413	88.401	5.746392	1.00062484	2.073E-12
16D10786	2.4 %	27.428209	0.141995	4.314497	0.045537	0.016738	0.000200	88.408	5.747180	1.00062489	5.408E-12
16D10788	2.5 %	25.423580	0.146543	4.605994	0.047059	0.010224	0.000166	88.422	5.748757	1.00062498	5.036E-12
16D10789	2.6 %	26.397801	0.170568	4.486508	0.050053	0.014079	0.000191	88.429	5.749546	1.00062503	4.819E-12
16D10790	2.7 %	25.317396	0.286027	4.483768	0.088477	0.010165	0.000303	88.436	5.750335	1.00062508	2.458E-12
16D10792	2.8 %	25.456613	0.178218	4.616218	0.056629	0.010796	0.000203	88.450	5.751912	1.00062518	4.128E-12
16D10793	2.9 %	24.898651	0.268731	4.647670	0.084733	0.008269	0.000267	88.457	5.752701	1.00062523	2.702E-12
16D10794	3.0 %	31.031743	0.382736	4.858101	0.102271	0.029049	0.000509	88.464	5.753491	1.00062528	2.755E-12
16D10796	3.2 %	26.207142	0.174822	4.718736	0.054568	0.012831	0.000198	88.478	5.755069	1.00062538	4.485E-12
16D10797	3.4 %	26.764673	0.186252	4.748310	0.057478	0.015888	0.000228	88.485	5.755859	1.00062543	4.168E-12
16D10798	3.6 %	26.878739	0.119663	4.554469	0.037846	0.016573	0.000158	88.492	5.756648	1.00062547	6.781E-12
16D10800	3.8 %	27.459392	0.109362	4.616745	0.034395	0.018409	0.000147	88.506	5.758228	1.00062557	7.936E-12
16D10801	4.0 %	26.698139	0.162987	4.529101	0.049068	0.016160	0.000205	88.512	5.759017	1.00062562	4.894E-12
16D10802	4.3 %	26.034621	0.107876	4.459265	0.035670	0.013585	0.000141	88.519	5.759807	1.00062567	6.945E-12
16D10804	4.6 %	24.119036	0.151956	4.244119	0.048251	0.008197	0.000167	88.533	5.761388	1.00062577	4.409E-12
16D10805	4.9 %	24.252507	0.142414	4.241670	0.048244	0.009080	0.000173	88.540	5.762178	1.00062582	4.400E-12
16D10806	5.2 %	25.219327	0.120664	4.057336	0.039998	0.012376	0.000153	88.547	5.762969	1.00062587	5.755E-12
16D10808	5.5 %	24.568406	0.125249	3.916910	0.039902	0.010847	0.000153	88.561	5.764550	1.00062597	5.399E-12
16D10809	5.8 %	28.562017	0.130375	3.736132	0.036812	0.024327	0.000196	88.568	5.765341	1.00062601	6.939E-12
16D10810	6.2 %	24.303729	0.092091	3.741831	0.029757	0.010305	0.000119	88.575	5.766131	1.00062606	7.291E-12
16D10812	6.6 %	23.929440	0.099533	3.495747	0.031306	0.009584	0.000122	88.589	5.767713	1.00062616	6.471E-12
16D10813	7.0 %	24.708362	0.093261	3.481509	0.029451	0.013233	0.000128	88.596	5.768505	1.00062621	7.326E-12
16D10814	7.6 %	26.245338	0.072404	3.605526	0.023104	0.019115	0.000116	88.603	5.769296	1.00062626	1.126E-11
16D10816	8.3 %	25.963858	0.054344	3.881750	0.019427	0.019084	0.000100	88.617	5.770879	1.00062636	1.467E-11
16D10817	9.0 %	26.718932	0.048289	3.871911	0.018122	0.021474	0.000101	88.624	5.771670	1.00062641	1.743E-11
16D10818	9.8 %	✓ 27.519314	0.045493	4.384716	0.019060	0.025150	0.000110	88.631	5.772462	1.00062646	2.067E-11
16D10820	11.0 %	✓ 28.827247	0.061576	4.131997	0.020530	0.029150	0.000132	88.644	5.774046	1.00062655	1.639E-11
16D10821	13.0 %	✓ 30.490652	0.038928	6.854345	0.024804	0.035668	0.000124	88.651	5.774838	1.00062660	3.346E-11
16D10822	15.5 %	✓ 36.006929	0.049523	13.653518	0.048718	0.056551	0.000194	88.658	5.775630	1.00062665	3.365E-11
16D10824	18.5 %	✓ 44.920457	0.135138	20.131994	0.090896	0.088355	0.000406	88.672	5.777136	1.00062674	1.670E-11
16D10825	21.5 %	✓ 50.700208	0.210517	28.375825	0.151400	0.110324	0.000591	88.678	5.777928	1.00062679	1.374E-11
16D10827	24.5 %	✓ 55.065600	0.318105	38.504922	0.257059	0.128320	0.000874	88.692	5.779513	1.00062689	1.037E-11

Procedure Blanks		36Ar ± 1σ (SE) [fA]	37Ar ± 1σ (SE) [fA]	38Ar ± 1σ (SE) [fA]	39Ar ± 1σ (SE) [fA]	40Ar ± 1σ (SE) [fA]
16D10775	1.0 %	0.0051867 ± 0.0004759	0.0481463 ± 0.0178479	0.0073595 ± 0.0185859	0.0277659 ± 0.0155259	1.4368758 ± 0.1213346
16D10777	1.4 %	0.0051503 ± 0.0004759	0.0384939 ± 0.0178479	0.0117267 ± 0.0185859	0.0235503 ± 0.0155259	1.4747919 ± 0.1213346
16D10778	1.8 %	0.0051269 ± 0.0004759	0.0340974 ± 0.0178479	0.0133427 ± 0.0185859	0.0217194 ± 0.0155259	1.4841450 ± 0.1213346
16D10780	1.9 %	0.0050760 ± 0.0004759	0.0268577 ± 0.0178479	0.0153397 ± 0.0185859	0.0188582 ± 0.0155259	1.4855700 ± 0.1213346
16D10781	2.0 %	0.0050467 ± 0.0004759	0.0236261 ± 0.0178479	0.0158937 ± 0.0185859	0.0176570 ± 0.0155259	1.4791543 ± 0.1213346
16D10782	2.1 %	0.0050160 ± 0.0004759	0.0207503 ± 0.0178479	0.0161600 ± 0.0185859	0.0166372 ± 0.0155259	1.4687512 ± 0.1213346
16D10784	2.2 %	0.0049578 ± 0.0004759	0.0163613 ± 0.0178479	0.0160256 ± 0.0185859	0.0151938 ± 0.0155259	1.4417982 ± 0.1213346
16D10785	2.3 %	0.0049250 ± 0.0004759	0.0143704 ± 0.0178479	0.0156729 ± 0.0185859	0.0145972 ± 0.0155259	1.4236740 ± 0.1213346
16D10786	2.4 %	0.0048950 ± 0.0004759	0.0127981 ± 0.0178479	0.0152154 ± 0.0185859	0.0141599 ± 0.0155259	1.4057939 ± 0.1213346
16D10788	2.5 %	0.0048354 ± 0.0004759	0.0102685 ± 0.0178479	0.0140005 ± 0.0185859	0.0135417 ± 0.0155259	1.3676684 ± 0.1213346
16D10789	2.6 %	0.0048063 ± 0.0004759	0.0092809 ± 0.0178479	0.0132848 ± 0.0185859	0.0133404 ± 0.0155259	1.3481635 ± 0.1213346
16D10790	2.7 %	0.0047777 ± 0.0004759	0.0084580 ± 0.0178479	0.0125226 ± 0.0185859	0.0131979 ± 0.0155259	1.3288172 ± 0.1213346
16D10792	2.8 %	0.0047233 ± 0.0004759	0.0072488 ± 0.0178479	0.0109293 ± 0.0185859	0.0130538 ± 0.0155259	1.2918145 ± 0.1213346
16D10793	2.9 %	0.0046978 ± 0.0004759	0.0068339 ± 0.0178479	0.0101301 ± 0.0185859	0.0130352 ± 0.0155259	1.2747048 ± 0.1213346
16D10794	3.0 %	0.0046735 ± 0.0004759	0.0065270 ± 0.0178479	0.0093487 ± 0.0185859	0.0130416 ± 0.0155259	1.2588470 ± 0.1213346
16D10796	3.2 %	0.0046295 ± 0.0004759	0.0061829 ± 0.0178479	0.0078897 ± 0.0185859	0.0131002 ± 0.0155259	1.2317134 ± 0.1213346
16D10797	3.4 %	0.0046100 ± 0.0004759	0.0061194 ± 0.0178479	0.0072347 ± 0.0185859	0.0131389 ± 0.0155259	1.2207903 ± 0.1213346
16D10798	3.6 %	0.0045922 ± 0.0004759	0.0061109 ± 0.0178479	0.0066424 ± 0.0185859	0.0131757 ± 0.0155259	1.2118246 ± 0.1213346
16D10800	3.8 %	0.0045626 ± 0.0004759	0.0062095 ± 0.0178479	0.0056773 ± 0.0185859	0.0132209 ± 0.0155259	1.2002039 ± 0.1213346
16D10801	4.0 %	0.0045509 ± 0.0004759	0.0062920 ± 0.0178479	0.0053174 ± 0.0185859	0.0132194 ± 0.0155259	1.1977078 ± 0.1213346
16D10802	4.3 %	0.0045413 ± 0.0004759	0.0063809 ± 0.0178479	0.0050460 ± 0.0185859	0.0131957 ± 0.0155259	1.1974867 ± 0.1213346
16D10804	4.6 %	0.0045290 ± 0.0004759	0.0065318 ± 0.0178479	0.0047809 ± 0.0185859	0.0130665 ± 0.0155259	1.2039204 ± 0.1213346
16D10805	4.9 %	0.0045263 ± 0.0004759	0.0065714 ± 0.0178479	0.0047905 ± 0.0185859	0.0129545 ± 0.0155259	1.2105403 ± 0.1213346
16D10806	5.2 %	0.0045261 ± 0.0004759	0.0065726 ± 0.0178479	0.0048951 ± 0.0185859	0.0128071 ± 0.0155259	1.2193650 ± 0.1213346
16D10808	5.5 %	0.0045328 ± 0.0004759	0.0064180 ± 0.0178479	0.0053828 ± 0.0185859	0.0123978 ± 0.0155259	1.2432923 ± 0.1213346
16D10809	5.8 %	0.0045399 ± 0.0004759	0.0062418 ± 0.0178479	0.0057596 ± 0.0185859	0.0121327 ± 0.0155259	1.2581660 ± 0.1213346
16D10810	6.2 %	0.0045494 ± 0.0004759	0.0059866 ± 0.0178479	0.0062187 ± 0.0185859	0.0118259 ± 0.0155259	1.2747867 ± 0.1213346
16D10812	6.6 %	0.0045758 ± 0.0004759	0.0052011 ± 0.0178479	0.0073586 ± 0.0185859	0.0110858 ± 0.0155259	1.3125445 ± 0.1213346
16D10813	7.0 %	0.0045927 ± 0.0004759	0.0046525 ± 0.0178479	0.0080234 ± 0.0185859	0.0106527 ± 0.0155259	1.3332587 ± 0.1213346
16D10814	7.6 %	0.0046119 ± 0.0004759	0.0039883 ± 0.0178479	0.0087390 ± 0.0185859	0.0101785 ± 0.0155259	1.3548743 ± 0.1213346
16D10816	8.3 %	0.0046575 ± 0.0004759	0.0022789 ± 0.0178479	0.0102771 ± 0.0185859	0.0091121 ± 0.0155259	1.3996970 ± 0.1213346
16D10817	9.0 %	0.0046836 ± 0.0004759	0.0012175 ± 0.0178479	0.0110744 ± 0.0185859	0.0085236 ± 0.0155259	1.4222873 ± 0.1213346
16D10818	9.8 %	0.0047120 ± 0.0004759	0.0000078 ± 0.0178479	0.0118714 ± 0.0185859	0.0079015 ± 0.0155259	1.4445455 ± 0.1213346
16D10820	11.0 %	0.0047750 ± 0.0004759	0.0028860 ± 0.0178479	0.0134006 ± 0.0185859	0.0065685 ± 0.0155259	1.4865652 ± 0.1213346
16D10821	13.0 %	0.0048094 ± 0.0004759	0.0045845 ± 0.0178479	0.0140979 ± 0.0185859	0.0058649 ± 0.0155259	1.5055161 ± 0.1213346
16D10822	15.5 %	0.0048457 ± 0.0004759	0.0064597 ± 0.0178479	0.0147248 ± 0.0185859	0.0051419 ± 0.0155259	1.5225135 ± 0.1213346
16D10824	18.5 %	0.0049192 ± 0.0004759	0.0105327 ± 0.0178479	0.0156480 ± 0.0185859	0.0037322 ± 0.0155259	1.5477385 ± 0.1213346
16D10825	21.5 %	0.0049601 ± 0.0004759	0.0129564 ± 0.0178479	0.0159508 ± 0.0185859	0.0029813 ± 0.0155259	1.5563493 ± 0.1213346
16D10827	24.5 %	0.0050458 ± 0.0004759	0.0184114 ± 0.0178479	0.0160600 ± 0.0185859	0.0014898 ± 0.0155259	1.5612877 ± 0.1213346

Intercept Values		36Ar ± 1σ (SE) [fA]	r2	Regression (type,n)	37Ar ± 1σ (SE) [fA]	r2	Regression (type,n)	38Ar ± 1σ (SE) [fA]	r2	Regression (type,n)	39Ar ± 1σ (SE) [fA]	r2	Regression (type,n)	40Ar ± 1σ (SE) [fA]	r2	Regression (type,n)
16D10775	1.0 %	0.5435106 ± 0.0011561	0.8926	EXP 150 of 150	2.563728 ± 0.014575	0.5054	EXP 150 of 150	0.2386325 ± 0.0161148	0.0046	EXP 150 of 150	6.4451982 ± 0.0158171	0.8435	EXP 150 of 150	314.78839 ± 0.03149	0.9968	EXP 150 of 150
16D10777	1.4 %	0.3363985 ± 0.0009169	0.7481	EXP 150 of 150	3.171606 ± 0.017953	0.5328	EXP 149 of 150	0.1928529 ± 0.0162863	0.0054	EXP 150 of 150	7.4481829 ± 0.0165866	0.8721	EXP 149 of 150	263.28106 ± 0.03006	0.9943	EXP 150 of 150
16D10778	1.8 %	0.3629869 ± 0.0008929	0.8180	EXP 150 of 150	4.966491 ± 0.018296	0.7260	EXP 150 of 150	0.2251286 ± 0.0164656	0.0010	EXP 150 of 150	9.6878986 ± 0.0170604	0.9151	EXP 150 of 150	320.66747 ± 0.03120	0.9980	EXP 150 of 150
16D10780	1.9 %	0.1184988 ± 0.0005456	0.0684	EXP 150 of 150	3.150847 ± 0.017414	0.5458	EXP 150 of 150	0.1326333 ± 0.0168136	0.0042	EXP 150 of 150	5.4930266 ± 0.0155966	0.7809	EXP 150 of 150	157.21044 ± 0.02426	0.0221	EXP 150 of 150
16D10781	2.0 %	0.1015228 ± 0.0005372	0.0035	EXP 149 of 150	3.519268 ± 0.018925	0.6179	EXP 150 of 150	0.1135537 ± 0.0154033	0.0109	EXP 150 of 150	5.6025267 ± 0.0167360	0.7964	EXP 150 of 150	155.96201 ± 0.02513	0.3958	EXP 150 of 150
16D10782	2.1 %	0.0985257 ± 0.0005207	0.0039	EXP 150 of 150	3.350966 ± 0.015847	0.5883	EXP 150 of 150	0.1034222 ± 0.0155292	0.0004	EXP 150 of 150	4.9913271 ± 0.0159347	0.7441	EXP 150 of 150	142.02647 ± 0.02372	0.4538	EXP 150 of 150
16D10784	2.2 %	0.0613486 ± 0.0003811	0.1691	EXP 150 of 150	3.404199 ± 0.016510	0.5204	EXP 150 of 150	0.0866347 ± 0.0174495	0.0001	EXP 150 of 150	4.7635545 ± 0.0173245	0.7051	EXP 150 of 150	125.55200 ± 0.02456	0.8096	EXP 150 of 150
16D10785	2.3 %	0.0290285 ± 0.0002920	0.6023	EXP 149 of 150	1.114340 ± 0.018087	0.1108	EXP 150 of 150	0.0493654 ± 0.0158544	0.0085	EXP 150 of 150	1.6128359 ± 0.0136555	0.1400	EXP 150 of 150	44.60614 ± 0.01975	0.9978	EXP 150 of 150
16D10786	2.4 %	0.0698011 ± 0.0004850	0.0401	EXP 150 of 150	3.000929 ± 0.019122	0.4088	EXP 150 of 150	0.0865348 ± 0.0174607	0.0048	EXP 150 of 150	4.0599079 ± 0.0132785	0.6990	EXP 149 of 150	114.07161 ± 0.02315	0.8945	EXP 150 of 150
16D10788	2.5 %	0.0446708 ± 0.0003607	0.4383	EXP 150 of 150	3.221421 ± 0.018160	0.5000	EXP 150 of 150	0.0603794 ± 0.0176749	0.0051	EXP 150 of 150	4.0798182 ± 0.0168774	0.6111	EXP 150 of 150	106.29367 ± 0.02284	0.9222	EXP 150 of 150
16D10789	2.6 %	0.0553508 ± 0.0003476	0.2149	EXP 150 of 150	2.890884 ± 0.017373	0.4994	EXP 150 of 150	0.0756769 ± 0.0157406	0.0001	EXP 150 of 150	3.7584485 ± 0.0180274	0.5735	EXP 149 of 150	101.73613 ± 0.02211	0.9467	EXP 150 of 150
16D10790	2.7 %	0.0241852 ± 0.0002443	0.7434	EXP 149 of 150	1.532823 ± 0.017092	0.1384	EXP 150 of 150	0.0379646 ± 0.0158742	0.0070	EXP 150 of 150	1.9928049 ± 0.0157292	0.2346	EXP 149 of 150	52.53438 ± 0.02192	0.9953	EXP 150 of 150
16D10792	2.8 %	0.0391535 ± 0.0003551	0.3459	EXP 150 of 150	2.642551 ± 0.018298	0.4443	EXP 150 of 150	0.0290048 ± 0.0163133	0.0453	EXP 150 of 150	3.3376696 ± 0.0167674	0.5092	EXP 150 of 150	87.29327 ± 0.02051	0.9725	EXP 150 of 150
16D10793	2.9 %	0.0223453 ± 0.0002483	0.7297	EXP 150 of 150	1.778228 ± 0.018742	0.1633	EXP 149 of 150	0.0515341 ± 0.0172742	0.0003	EXP 150 of 150	2.2292428 ± 0.0178413	0.1856	EXP 150 of 150	57.56479 ± 0.02071	0.9937	EXP 150 of 150
16D10794	3.0 %	0.0554027 ± 0.0004040	0.0911	EXP 150 of 150	1.520015 ± 0.018601	0.1311	EXP 150 of 150	0.0531899 ± 0.0163644	0.0023	EXP 150 of 150	1.8216922 ± 0.0159385	0.1405	EXP 150 of 150	58.66334 ± 0.02029	0.9932	EXP 150 of 150
16D10796	3.2 %	0.0478108 ± 0.0003494	0.2818	EXP 150 of 150	2.850576 ± 0.018393	0.4352	EXP 150 of 150	0.0790014 ± 0.0155068	0.0007	EXP 150 of 150	3.5227825 ± 0.0169695	0.4817	EXP 150 of 150	94.66125 ± 0.02022	0.8791	EXP 149 of 150
16D10797	3.4 %	0.0532695 ± 0.0003651	0.1423	EXP 150 of 150	2.609580 ± 0.017170	0.3669	EXP 150 of 150	0.0435839 ± 0.0179885	0.0061	EXP 150 of 150	3.2046560 ± 0.0153214	0.4903	EXP 150 of 150	88.05423 ± 0.02268	0.9356	EXP 150 of 150
16D10798	3.6 %	0.0868268 ± 0.0004595	0.0225	EXP 150 of 150	4.058110 ± 0.018286	0.6204	EXP 150 of 150	0.1160597 ± 0.0164450	0.0056	EXP 150 of 150	5.2000759 ± 0.0162581	0.7517	EXP 150 of 150	142.49300 ± 0.02605	0.9780	EXP 150 of 150
16D10800	3.8 %	0.1092054 ± 0.0004706	0.2398	EXP 150 of 150	4.712004 ± 0.018526	0.6869	EXP 150 of 150	0.0959463 ± 0.0160930	0.0032	EXP 150 of 150	5.9589174 ± 0.0169839	0.8047	EXP 150 of 150	166.54386 ± 0.02566	0.9929	EXP 150 of 150
16D10801	4.0 %	0.0628140 ± 0.0004133	0.0609	EXP 149 of 150	2.929135 ± 0.017150	0.5163	EXP 150 of 150	0.0855425 ± 0.0159052	0.0103	EXP 150 of 150	3.7747548 ± 0.0163108	0.5969	EXP 150 of 150	103.16357 ± 0.02475	0.0018	EXP 150 of 150
16D10802	4.3 %	0.0758123 ± 0.0004432	0.0022	EXP 150 of 150	4.198604 ± 0.018356	0.6646	EXP 150 of 150	0.0769194 ± 0.0161464	0.0092	EXP 150 of 150	5.4987957 ± 0.0156369	0.8050	EXP 150 of 150	145.88352 ± 0.02528	0.9843	EXP 149 of 150
16D10804	4.6 %	0.0339963 ± 0.0003078	0.5616	EXP 150 of 150	2.735010 ± 0.017010	0.4255	EXP 150 of 150	0.0514888 ± 0.0165423	0.0016	EXP 150 of 150	3.7638175 ± 0.0171169	0.5935	EXP 150 of 150	93.04996 ± 0.02203	0.6084	EXP 150 of 150
16D10805	4.9 %	0.0369272 ± 0.0003341	0.3704	EXP 149 of 150	2.712733 ± 0.017859	0.5337	EXP 150 of 150	0.1029840 ± 0.0156063	0.0231	EXP 149 of 150	3.7359725 ± 0.0145529	0.6556	EXP 150 of 150	92.88123 ± 0.02175	0.6036	EXP 150 of 150
16D10806	5.2 %	0.0600739 ± 0.0003898	0.0157	EXP 150 of 150	3.264736 ± 0.019380	0.4868	EXP 150 of 150	0.1012634 ± 0.0147915	0.0054	EXP 150 of 150	4.7026743 ± 0.0153111	0.7695	EXP 150 of 150	121.12136 ± 0.02128	0.9636	EXP 150 of 150
16D10808	5.5 %	0.0514101 ± 0.0003756	0.1503	EXP 150 of 150	3.033545 ± 0.017736	0.5381	EXP 148 of 150	0.0801361 ± 0.0163968	0.0020	EXP 150 of 150	4.5279528 ± 0.0161402	0.7002	EXP 150 of 150	113.71241 ± 0.02313	0.9327	EXP 150 of 150
16D10809	5.8 %	0.1207670 ± 0.0005266	0.3172	EXP 150 of 150	3.199057 ± 0.019093	0.4699	EXP 150 of 150	0.0981742 ± 0.0173323	0.0020	EXP 150 of 150	5.0074827 ± 0.0159427	0.7703	EXP 150 of 150	145.81089 ± 0.02223	0.9912	EXP 150 of 150
16D10810	6.2 %	0.0653534 ± 0.0004367	0.0527	EXP 150 of 150	3.958012 ± 0.017182	0.6429	EXP 150 of 150	0.1136628 ± 0.0146298	0.0046	EXP 150 of 150	6.1873369 ± 0.0163655	0.8309	EXP 150 of 150	153.18009 ± 0.02390	0.9922	EXP 150 of 150
16D10812	6.6 %	0.0555482 ± 0.0003644	0.0955	EXP 150 of 150	3.331833 ± 0.016566	0.5739	EXP 150 of 150	0.1107964 ± 0.0158643	0.0021	EXP 149 of 150	5.5764910 ± 0.0160876	0.8108	EXP 150 of 150	136.12284 ± 0.02221	0.9883	EXP 149 of 150
16D10813	7.0 %	0.0817552 ± 0.0004566	0.0495	EXP 150 of 150	3.638785 ± 0.017658	0.6364	EXP 150 of 150	0.1175839 ± 0.0167043	0.0010	EXP 149 of 150	6.1157594 ± 0.0158647	0.8372	EXP 150 of 150	153.95528 ± 0.02781	0.9904	EXP 150 of 150
16D10814	7.6 %	0.1658546 ± 0.0005916	0.4719	EXP 150 of 150	5.453542 ± 0.019332	0.6923	EXP 150 of 150	0.1469014 ± 0.0155640	0.0043	EXP 149 of 150	8.8521827 ± 0.0172889	0.9155	EXP 150 of 150	235.86882 ± 0.02857	0.9982	EXP 150 of 150
16D10816	8.3 %	0.2167460 ± 0.0006919	0.6821	EXP 150 of 150	7.736589 ± 0.017341	0.8693	EXP 150 of 150	0.2135848 ± 0.0169366	0.0016	EXP 150 of 150	11.6668003 ± 0.0164821	0.9516	EXP 150 of 150	307.05164 ± 0.02925	0.9992	EXP 150 of 150
16D10817	9.0 %	0.2801676 ± 0.0007898	0.7597	EXP 150 of 150	8.908227 ± 0.018367	0.8933	EXP 150 of 150	0.2545144 ± 0.0161648	0.0002	EXP 149 of 150	13.4694892 ± 0.0157606	0.9658	EXP 150 of 150	364.51045 ± 0.03034	0.9994	EXP 150 of 150
16D10818	9.8 %	0.3761736 ± 0.0009908	0.8240	EXP 150 of 150	11.614493 ± 0.021395	0.9110	EXP 150 of 150	0.3137361 ± 0.0145940	0.0157	EXP 150 of 150	15.5095058 ± 0.0169389	0.9722	EXP 150 of 150	431.99486 ± 0.03737	0.9994	EXP 150 of 150
16D10820	11.0 %	0.3306662 ± 0.0008170	0.8591	EXP 150 of 150	8.285535 ± 0.018739	0.8728	EXP 150 of 150	0.2307318 ± 0.0170152	0.0001	EXP 150 of 150	11.7393918 ± 0.0175262	0.9450	EXP 150 of 150	342.88293 ± 0.03342	0.9992	EXP 150 of 150
16D10821	13.0 %	0.7746074 ± 0.0012337	0.9404	EXP 150 of 150	26.524505 ± 0.019645	0.9843	EXP 149 of 150	0.5003375 ± 0.0158237	0.0001	EXP 150 of 150	22.6690176 ± 0.0186124	0.9845	EXP 150 of 150	698.57965 ± 0.04307	0.9998	EXP 150 of 150
16D10822	15.5 %	1.0442196 ± 0.0015258	0.9568	EXP 150 of 150	44.987598 ± 0.020956	0.9939	EXP 150 of 150	0.5479550 ± 0.0128454	0.0481	EXP 150 of 150	19.3049425 ± 0.0168202	0.9815	EXP 150 of 150	702.55394 ± 0.03980	0.9998	EXP 150 of 150
16D10824	18.5 %	0.6510963 ± 0.0012963	0.9148	EXP 150 of 150	26.394835 ± 0.018805	0.9859	EXP 150 of 150	0.2830101 ± 0.0170008	0.0046	EXP 149 of 150	7.6799656 ± 0.0160854	0.8919	EXP 150 of 150	349.54972 ± 0.03498	0.9991	EXP 150 of 150
16D10825	21.5 %	0.5930933 ± 0.0010887	0.9296	EXP 150 of 150	27.117083 ± 0.018842	0.9865	EXP 150 of 150	0.2354387 ± 0.0157874	0.0001	EXP 150 of 150	5.5979202 ± 0.0167203	0.7474	EXP 150 of 150	287.86533 ± 0.03107	0.9987	EXP 150 of 150
16D10827	24.5 %	0.4801119 ± 0.0010295	0.9011	EXP 150 of 150	25.553549 ± 0.018701	0.9849	EXP 150 of 150	0.2083180 ± 0.0158175	0.0114	EXP 150 of 150	3.8881739 ± 0.0158737	0.5940	EXP 149 of 150	217.51455 ± 0.02717	0.9976	EXP 150 of 150

Project Info		Analyst	Irradiation	X-pos	Y-pos	Z/H-pos	Project	Experiment	Nmb
16D10775	1.0 %	Susan Schnur	15-OSU-07	0.00	0.00	48.35	Walvis Ridge\MV1203 (13-INT-04)	16D10771	01
16D10777	1.4 %	Susan Schnur	15-OSU-07	0.00	0.00	48.35	Walvis Ridge\MV1203 (13-INT-04)	16D10771	01
16D10778	1.8 %	Susan Schnur	15-OSU-07	0.00	0.00	48.35	Walvis Ridge\MV1203 (13-INT-04)	16D10771	01
16D10780	1.9 %	Susan Schnur	15-OSU-07	0.00	0.00	48.35	Walvis Ridge\MV1203 (13-INT-04)	16D10771	01
16D10781	2.0 %	Susan Schnur	15-OSU-07	0.00	0.00	48.35	Walvis Ridge\MV1203 (13-INT-04)	16D10771	01
16D10782	2.1 %	Susan Schnur	15-OSU-07	0.00	0.00	48.35	Walvis Ridge\MV1203 (13-INT-04)	16D10771	01
16D10784	2.2 %	Susan Schnur	15-OSU-07	0.00	0.00	48.35	Walvis Ridge\MV1203 (13-INT-04)	16D10771	01
16D10785	2.3 %	Susan Schnur	15-OSU-07	0.00	0.00	48.35	Walvis Ridge\MV1203 (13-INT-04)	16D10771	01
16D10786	2.4 %	Susan Schnur	15-OSU-07	0.00	0.00	48.35	Walvis Ridge\MV1203 (13-INT-04)	16D10771	01
16D10788	2.5 %	Susan Schnur	15-OSU-07	0.00	0.00	48.35	Walvis Ridge\MV1203 (13-INT-04)	16D10771	01
16D10789	2.6 %	Susan Schnur	15-OSU-07	0.00	0.00	48.35	Walvis Ridge\MV1203 (13-INT-04)	16D10771	01
16D10790	2.7 %	Susan Schnur	15-OSU-07	0.00	0.00	48.35	Walvis Ridge\MV1203 (13-INT-04)	16D10771	01
16D10792	2.8 %	Susan Schnur	15-OSU-07	0.00	0.00	48.35	Walvis Ridge\MV1203 (13-INT-04)	16D10771	01
16D10793	2.9 %	Susan Schnur	15-OSU-07	0.00	0.00	48.35	Walvis Ridge\MV1203 (13-INT-04)	16D10771	01
16D10794	3.0 %	Susan Schnur	15-OSU-07	0.00	0.00	48.35	Walvis Ridge\MV1203 (13-INT-04)	16D10771	01
16D10796	3.2 %	Susan Schnur	15-OSU-07	0.00	0.00	48.35	Walvis Ridge\MV1203 (13-INT-04)	16D10771	01
16D10797	3.4 %	Susan Schnur	15-OSU-07	0.00	0.00	48.35	Walvis Ridge\MV1203 (13-INT-04)	16D10771	01
16D10798	3.6 %	Susan Schnur	15-OSU-07	0.00	0.00	48.35	Walvis Ridge\MV1203 (13-INT-04)	16D10771	01
16D10800	3.8 %	Susan Schnur	15-OSU-07	0.00	0.00	48.35	Walvis Ridge\MV1203 (13-INT-04)	16D10771	01
16D10801	4.0 %	Susan Schnur	15-OSU-07	0.00	0.00	48.35	Walvis Ridge\MV1203 (13-INT-04)	16D10771	01
16D10802	4.3 %	Susan Schnur	15-OSU-07	0.00	0.00	48.35	Walvis Ridge\MV1203 (13-INT-04)	16D10771	01
16D10804	4.6 %	Susan Schnur	15-OSU-07	0.00	0.00	48.35	Walvis Ridge\MV1203 (13-INT-04)	16D10771	01
16D10805	4.9 %	Susan Schnur	15-OSU-07	0.00	0.00	48.35	Walvis Ridge\MV1203 (13-INT-04)	16D10771	01
16D10806	5.2 %	Susan Schnur	15-OSU-07	0.00	0.00	48.35	Walvis Ridge\MV1203 (13-INT-04)	16D10771	01
16D10808	5.5 %	Susan Schnur	15-OSU-07	0.00	0.00	48.35	Walvis Ridge\MV1203 (13-INT-04)	16D10771	01
16D10809	5.8 %	Susan Schnur	15-OSU-07	0.00	0.00	48.35	Walvis Ridge\MV1203 (13-INT-04)	16D10771	01
16D10810	6.2 %	Susan Schnur	15-OSU-07	0.00	0.00	48.35	Walvis Ridge\MV1203 (13-INT-04)	16D10771	01
16D10812	6.6 %	Susan Schnur	15-OSU-07	0.00	0.00	48.35	Walvis Ridge\MV1203 (13-INT-04)	16D10771	01
16D10813	7.0 %	Susan Schnur	15-OSU-07	0.00	0.00	48.35	Walvis Ridge\MV1203 (13-INT-04)	16D10771	01
16D10814	7.6 %	Susan Schnur	15-OSU-07	0.00	0.00	48.35	Walvis Ridge\MV1203 (13-INT-04)	16D10771	01
16D10816	8.3 %	Susan Schnur	15-OSU-07	0.00	0.00	48.35	Walvis Ridge\MV1203 (13-INT-04)	16D10771	01
16D10817	9.0 %	Susan Schnur	15-OSU-07	0.00	0.00	48.35	Walvis Ridge\MV1203 (13-INT-04)	16D10771	01
16D10818	9.8 %	Susan Schnur	15-OSU-07	0.00	0.00	48.35	Walvis Ridge\MV1203 (13-INT-04)	16D10771	01
16D10820	11.0 %	Susan Schnur	15-OSU-07	0.00	0.00	48.35	Walvis Ridge\MV1203 (13-INT-04)	16D10771	01
16D10821	13.0 %	Susan Schnur	15-OSU-07	0.00	0.00	48.35	Walvis Ridge\MV1203 (13-INT-04)	16D10771	01
16D10822	15.5 %	Susan Schnur	15-OSU-07	0.00	0.00	48.35	Walvis Ridge\MV1203 (13-INT-04)	16D10771	01
16D10824	18.5 %	Susan Schnur	15-OSU-07	0.00	0.00	48.35	Walvis Ridge\MV1203 (13-INT-04)	16D10771	01
16D10825	21.5 %	Susan Schnur	15-OSU-07	0.00	0.00	48.35	Walvis Ridge\MV1203 (13-INT-04)	16D10771	01
16D10827	24.5 %	Susan Schnur	15-OSU-07	0.00	0.00	48.35	Walvis Ridge\MV1203 (13-INT-04)	16D10771	01

16D10771.AGE >>> MV1203-D16-03 >>> WALVIS RIDGE | MV1203 (13-INT-04) PROJECT



Ar-Ages in Ma

WEIGHTED PLATEAU

59.29 ± 0.22

TOTAL FUSION

61.68 ± 0.20

NORMAL ISOCHRON

59.05 ± 0.33

INVERSE ISOCHRON

59.06 ± 0.33

MSWD (PROBABILITY)

0.98 (44%)

Sample Info

Groundmass

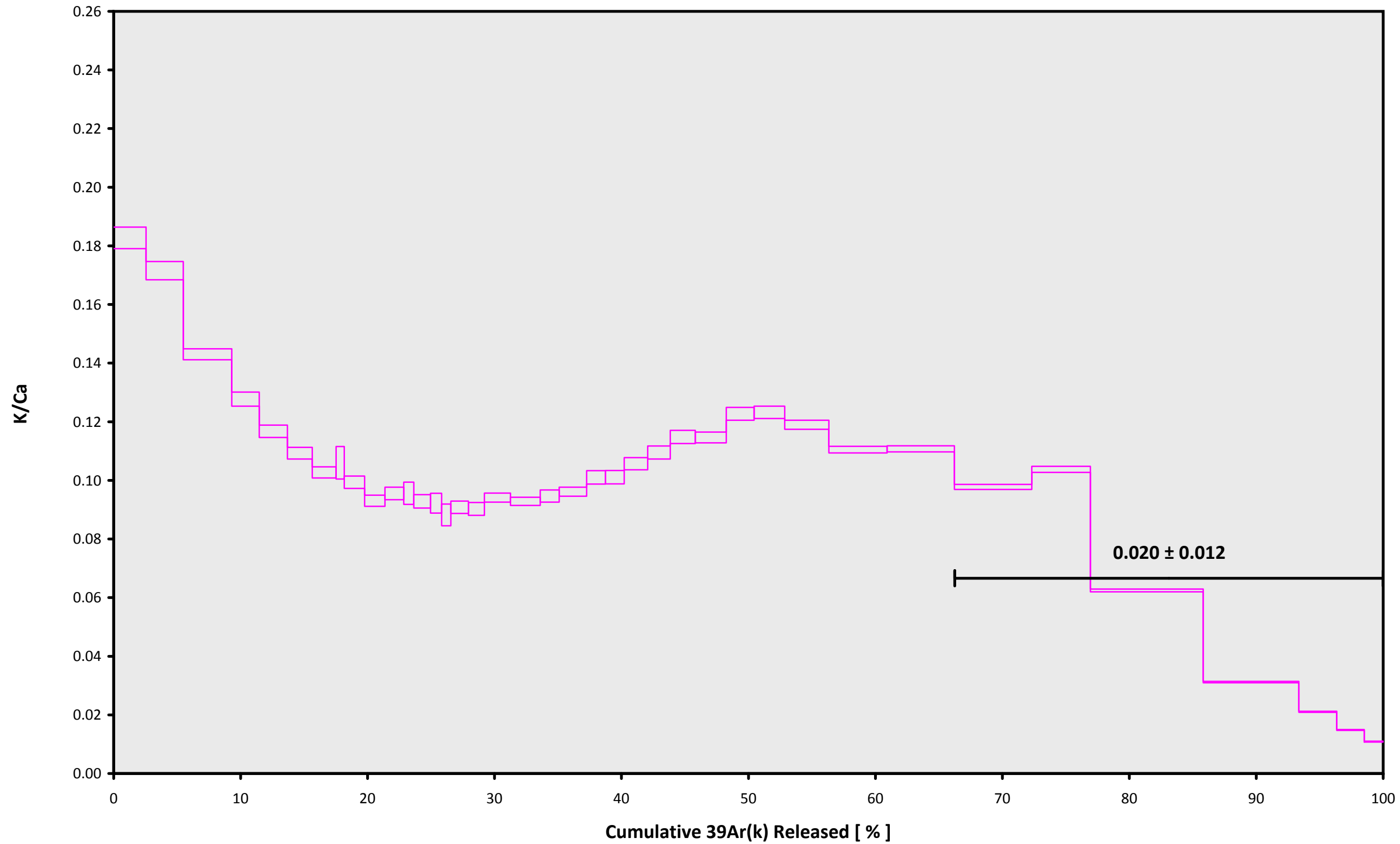
Bulkington West

Susan Schnur

IRR = 15-OSU-07 (7A28-15)

J = 0.00162067 ± 0.00000238

16D10771.AGE >>> MV1203-D16-03 >>> WALVIS RIDGE | MV1203 (13-INT-04) PROJECT



Ar-Ages in Ma

WEIGHTED PLATEAU

59.29 ± 0.22

TOTAL FUSION

61.68 ± 0.20

NORMAL ISOCHRON

59.05 ± 0.33

INVERSE ISOCHRON

59.06 ± 0.33

Sample Info

Groundmass

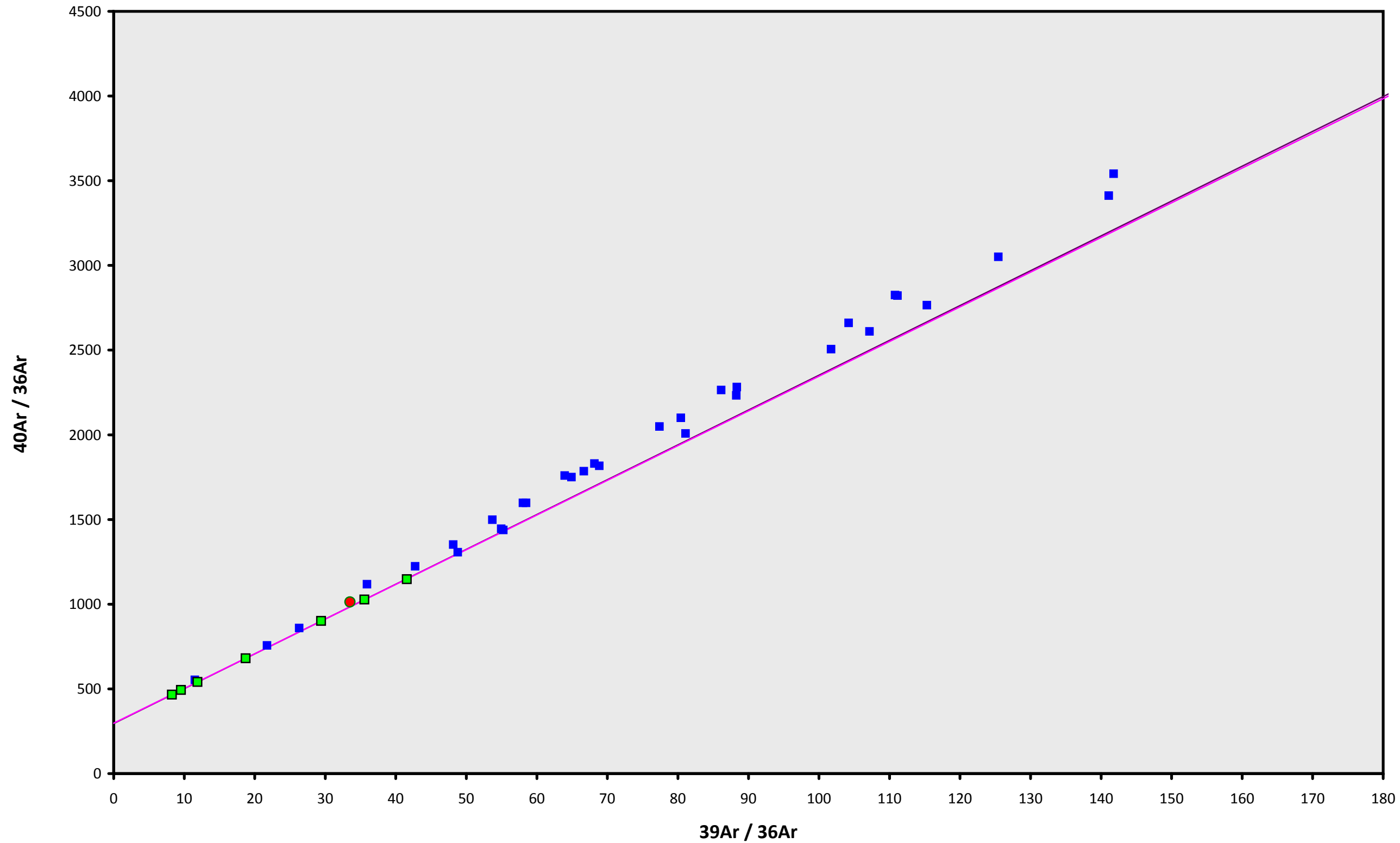
Bulkington West

Susan Schnur

IRR = 15-OSU-07 (7A28-15)

J = 0.00162067 ± 0.00000238

16D10771.AGE >>> MV1203-D16-03 >>> WALVIS RIDGE | MV1203 (13-INT-04) PROJECT



Ar-Ages in Ma

WEIGHTED PLATEAU

59.29 ± 0.22

TOTAL FUSION

61.68 ± 0.20

NORMAL ISOCHRON

59.05 ± 0.33

INVERSE ISOCHRON

59.06 ± 0.33

MSWD (PROBABILITY)

0.51 (77%)

40AR/36AR INTERCEPT

297.6 ± 2.3

Sample Info

Groundmass

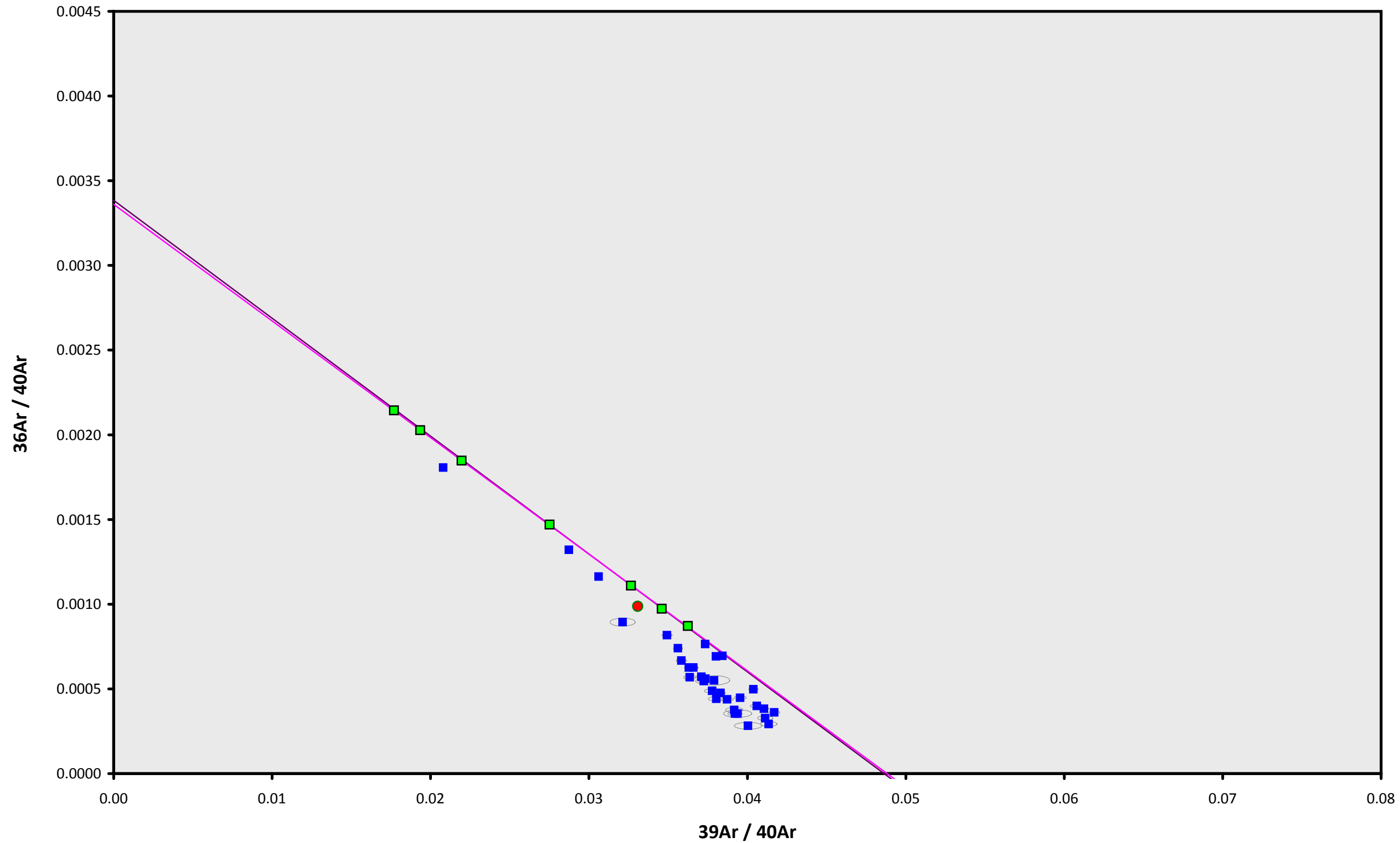
Bulkington West

Susan Schnur

IRR = 15-OSU-07 (7A28-15)

J = $0.00162067 \pm 0.00000238$

16D10771.AGE >>> MV1203-D16-03 >>> WALVIS RIDGE | MV1203 (13-INT-04) PROJECT



Ar-Ages in Ma

WEIGHTED PLATEAU
59.29 ± 0.22

TOTAL FUSION
61.68 ± 0.20

NORMAL ISOCHRON
59.05 ± 0.33

INVERSE ISOCHRON
59.06 ± 0.33

MSWD (PROBABILITY)
0.51 (77%)

SPREADING FACTOR
38.0%

40AR/36AR INTERCEPT
297.6 ± 2.3

Sample Info

Groundmass
Bulkington West
Susan Schnur

IRR = 15-OSU-07 (7A28-15)
J = 0.00162067 ± 0.00000238